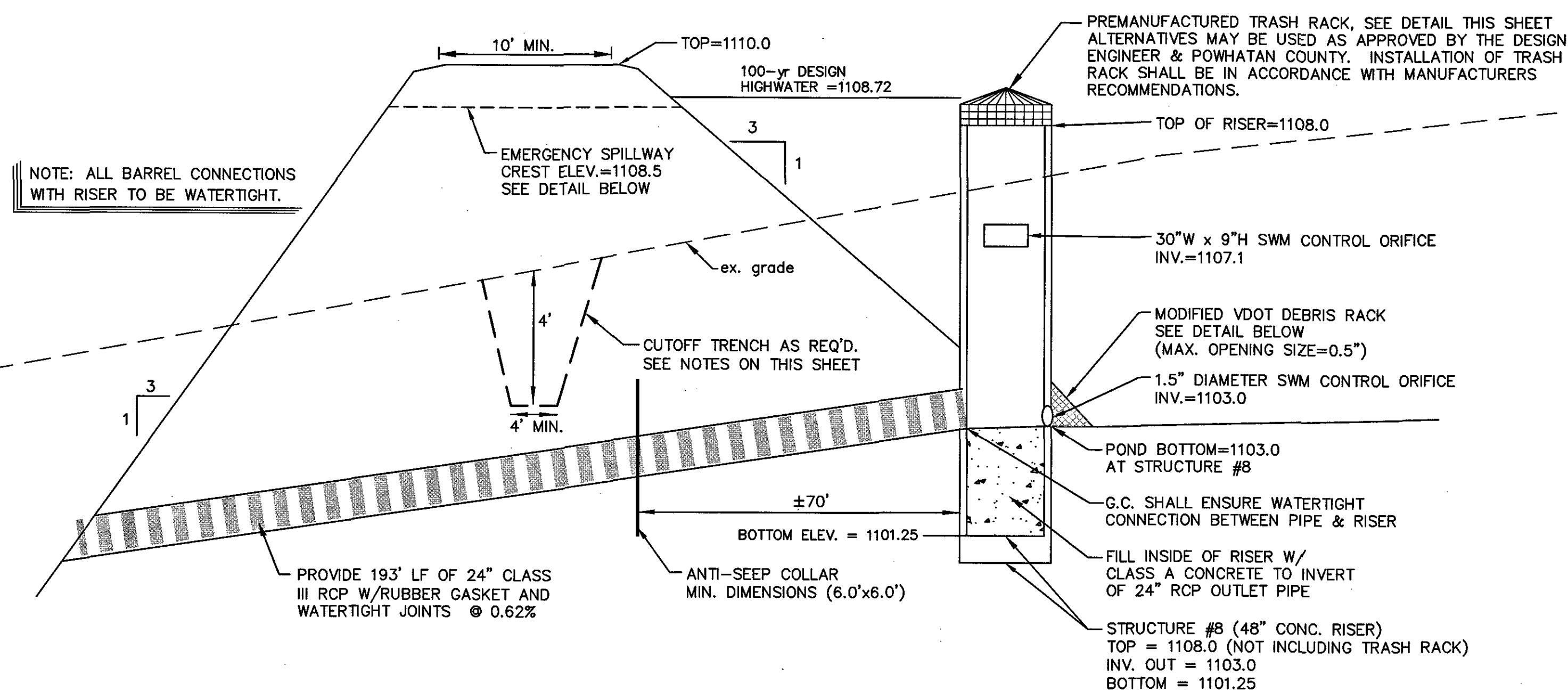
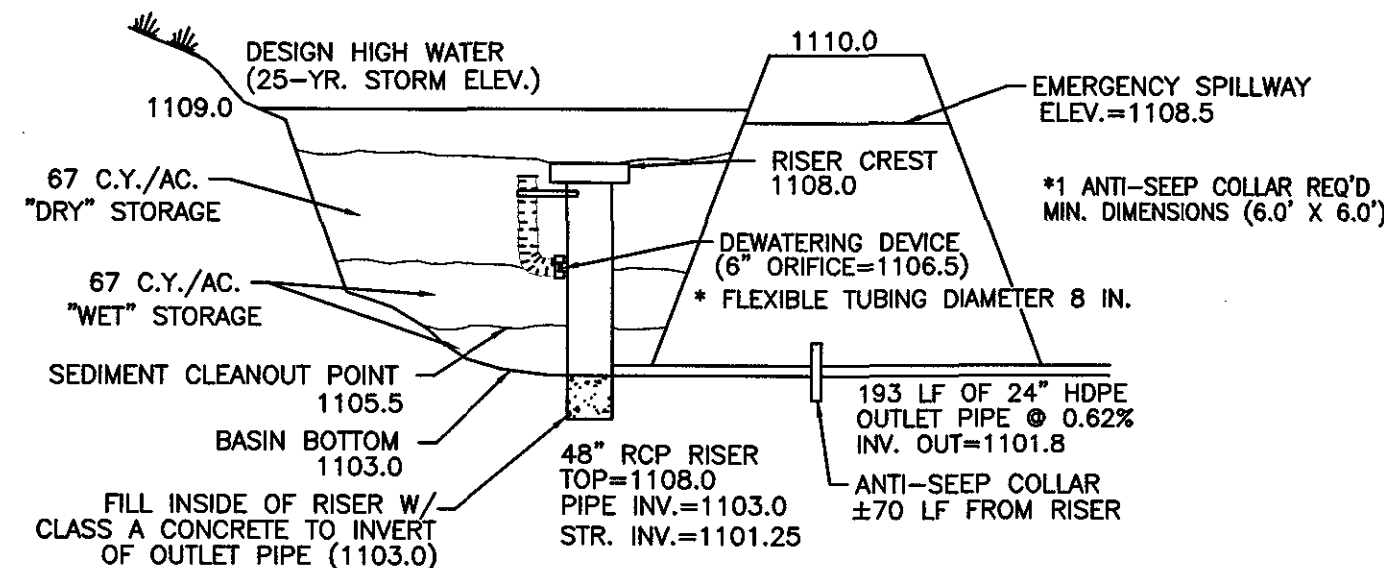


# DETENTION POND DETAIL

NOT TO SCALE



## SEDIMENT BASIN SCHEMATIC ELEVATIONS

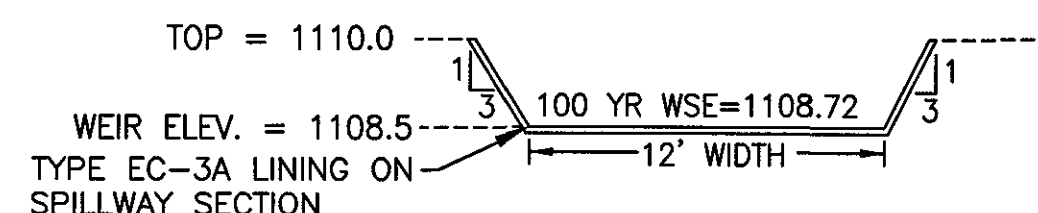


DESIGN ELEVATIONS WITH EMERGENCY SPILLWAY (RISER PASSES 25-YR. EVENT)

SB SEDIMENT BASIN

## TEMPORARY SEDIMENT BASIN:

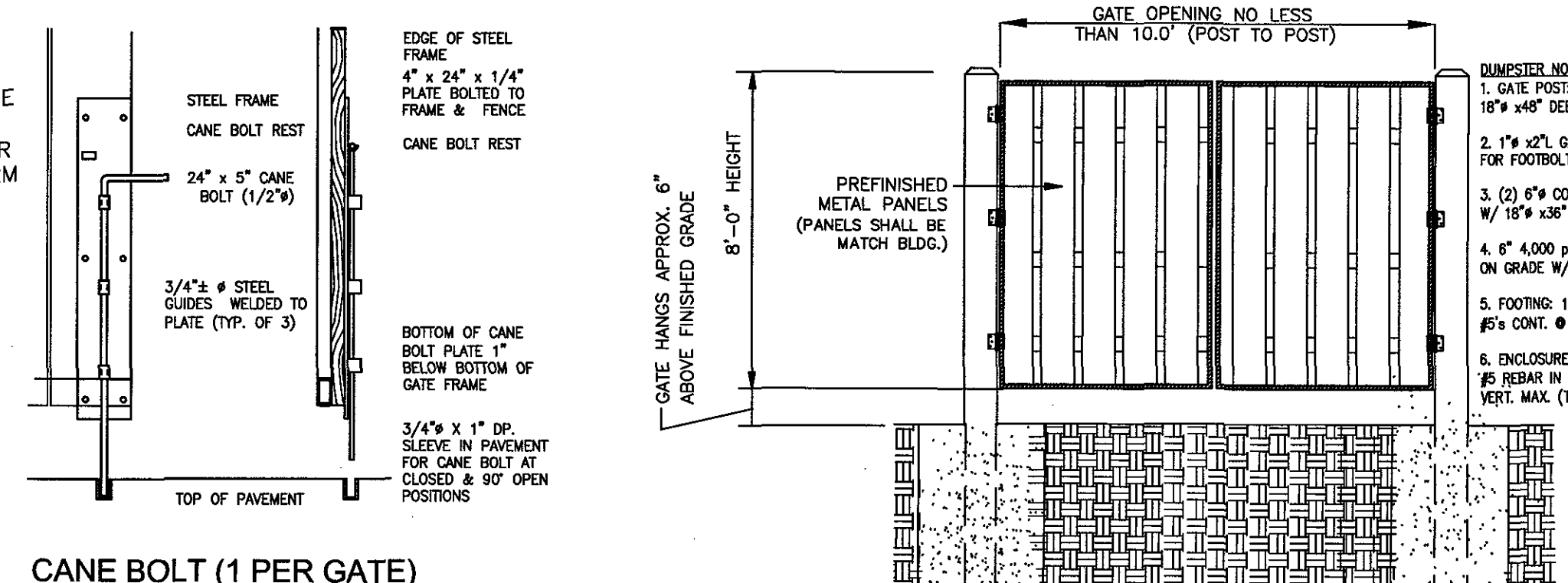
1. TOP OF DAM = 1110.0
2. DESIGN HIGH WATER = 1109.0
3. PRINCIPAL SPILLWAY CREST = 1108.0
4. DEWATERING ORIFICE INVERT = 1106.5
5. SEDIMENT CLEANOUT ELEV. = 1105.5



## SWM POND #1: EMERGENCY SPILLWAY DETAIL

NOTE:

1. THE PROPOSED DUMPSTER ENCLOSURE SHALL BE A MINIMUM OF 1' HIGHER THAN THE DUMPSTER HEIGHT OR OTHER SIMILAR RECEPTACLE. G.C. TO CONFIRM THE PROPOSED DUMPSTER DIMENSIONS BEING USED PRIOR TO ANY CONSTRUCTION OF THE ENCLOSURE.
2. G.C. SHALL PROVIDE HEAVY DUTY HINGES AND A METAL FRAME AROUND EACH GATE TO ENSURE THAT THE PROPOSED GATE DOES NOT SAG AFTER INSTALLATION. THE FRAME SHALL BE PAINTED BLACK OR PAINTED TO MATCH THE PROPOSED GATE.



CANE BOLT (1 PER GATE)

## TRASH ENCLOSURE SECTION & GATE

## SWM FACILITY NOTES

1. THE PROPOSED EMBANKMENT SHALL BE A HOMOGENEOUS EMBANKMENT COMPOSED OF MATERIAL THAT IS SUFFICIENTLY IMPERVIOUS TO PROVIDE AN ADEQUATE WATER BARRIER. SEE DETAILS ON THIS SHEET.
2. THE G.C. SHALL ENSURE 95% COMPACTION OF THE EMBANKMENT MATERIAL.

## MODIFICATIONS REQUIRED FOR CONVERSION TO PERMANENT SWM:

1. REMOVE ANY SEDIMENT LADEN WATER WITHIN THE BASIN. A FILTER BAG OR APPROVED EQUAL SEDIMENT TRAPPING MEASURE SHALL BE USED BEFORE DISCHARGING ANY WATER TO A DOWNSTREAM RECEIVING CHANNEL.
2. REMOVE DEWATERING STRUCTURE AT THIS TIME.
3. REMOVE TEMPORARY ORIFICE PLUGS AND RESHAPE BASIN BOTTOM TO PROVIDE POSITIVE DRAINAGE. ALL ACCUMULATED SEDIMENT SHALL BE REMOVED AND FINISH GRADE SHALL BE THOSE GRADES INDICATED ON THE PLAN SET INCLUDING TOPSOIL.
4. PLACE MINIMUM OF 4" OF TOPSOIL OVER ALL OF THE EMBANKMENT SLOPES & TOP, AND OTHER EXCAVATED SLOPES ASSOCIATED WITH THE SWM FACILITY.
5. SEED AND BLANKET MAT ALL REQUIRED SLOPES DISTURBED AND DENUED WITH THE BASIN INCLUDING THE INTERIOR AND EXTERIOR SLOPES.
6. STORMWATER MANAGEMENT AS-BUILTS WILL NEED TO BE SUBMITTED TO AND APPROVED BY ROANOKE COUNTY PRIOR TO FINAL PROJECT ACCEPTANCE AND BOND RELEASE.

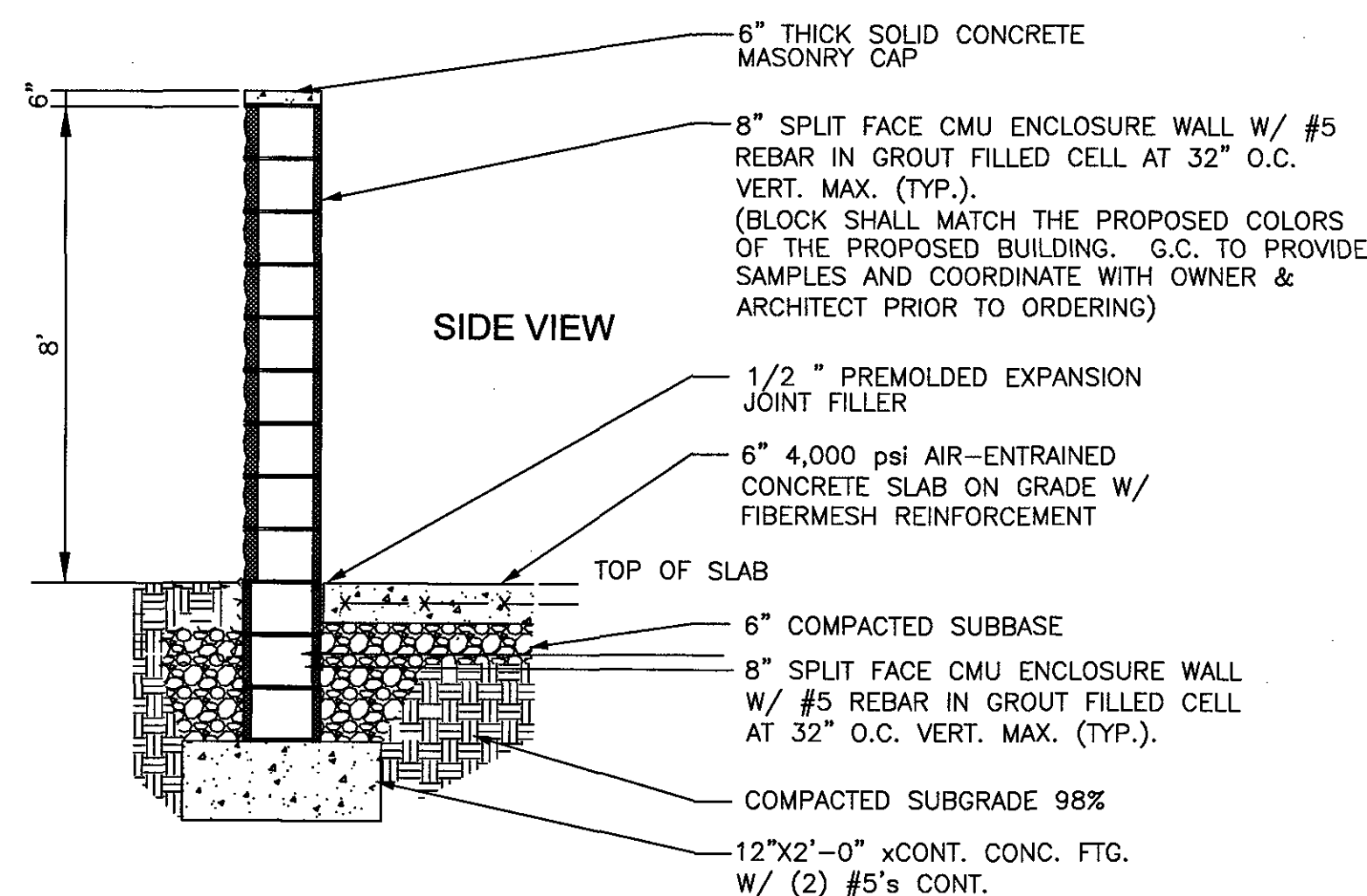
## GEOTECHNICAL TESTING REQUIREMENTS FOR S.W.M. FACILITY:

1. A GEOTECHNICAL REPORT SHALL BE REQUIRED FOR THE S.W.M. FACILITY TO INCLUDE THE FOLLOWING INFORMATION AND PROVIDED TO ROANOKE COUNTY PRIOR TO CONSTRUCTION OF THE FACILITY INCLUDING THE SEDIMENT BASIN.
2. REPORT SHALL INCLUDE THE FOLLOWING: RECOMMENDATIONS AND STANDARDS FOR EMBANKMENT MATERIALS INCLUDING BUT NOT LIMITED TO SUITABILITY OF MATERIALS, RECOMMENDED PLACEMENT CRITERIA (MOISTURE CONTENT, COMPACTION, ETC.).
3. THE REPORT SHALL ALSO INCLUDE DETAILS RELATED TO THE CUTOFF TRENCH CONSTRUCTION.
4. THE REPORT SHALL BE PROVIDED BY A LICENSED GEOTECHNICAL ENGINEER OR LICENSED GEOLOGIST AND THE REPORT SHALL BE SUBMITTED TO ROANOKE COUNTY.
5. THIS REQUIREMENT SHALL COMPLY WITH RCSWMDM 9.2.6.

## CUTOFF TRENCH NOTE:

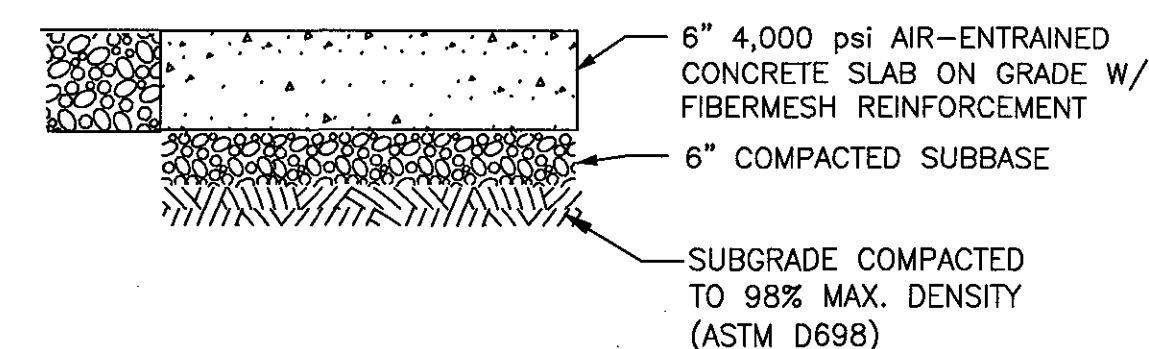
SIDE SLOPES SHALL BE NO GREATER THAN 1:1 SLOPE REQUIREMENTS. CUTOFF TRENCH SHALL BE CONSTRUCTED IN CONFORMANCE WITH THE VSMH (BLUE BOOK).

FRONT VIEW



## TRASH ENCLOSURE SECTION & GATE

N.T.S.



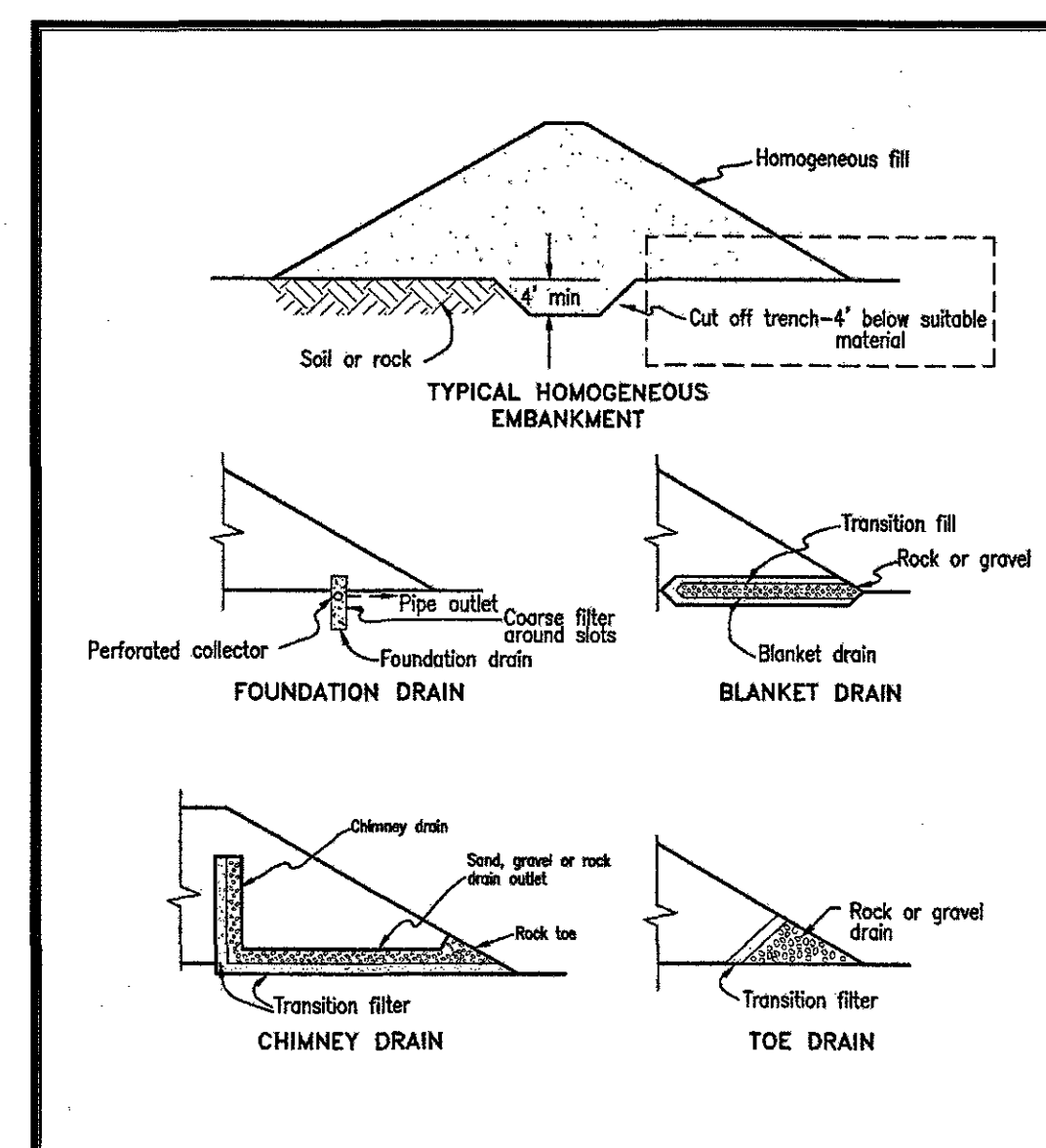
NOTE:  
G.C. SHALL BE RESPONSIBLE FOR OBTAINING ADEQUATE SUB-GRADE COMPACTION.

## SECTION THROUGH DUMPSTER PAD

NO SCALE

VA DEQ STORMWATER DESIGN SPECIFICATION INTRODUCTION: APPENDIX A: EARTHEN EMBANKMENT

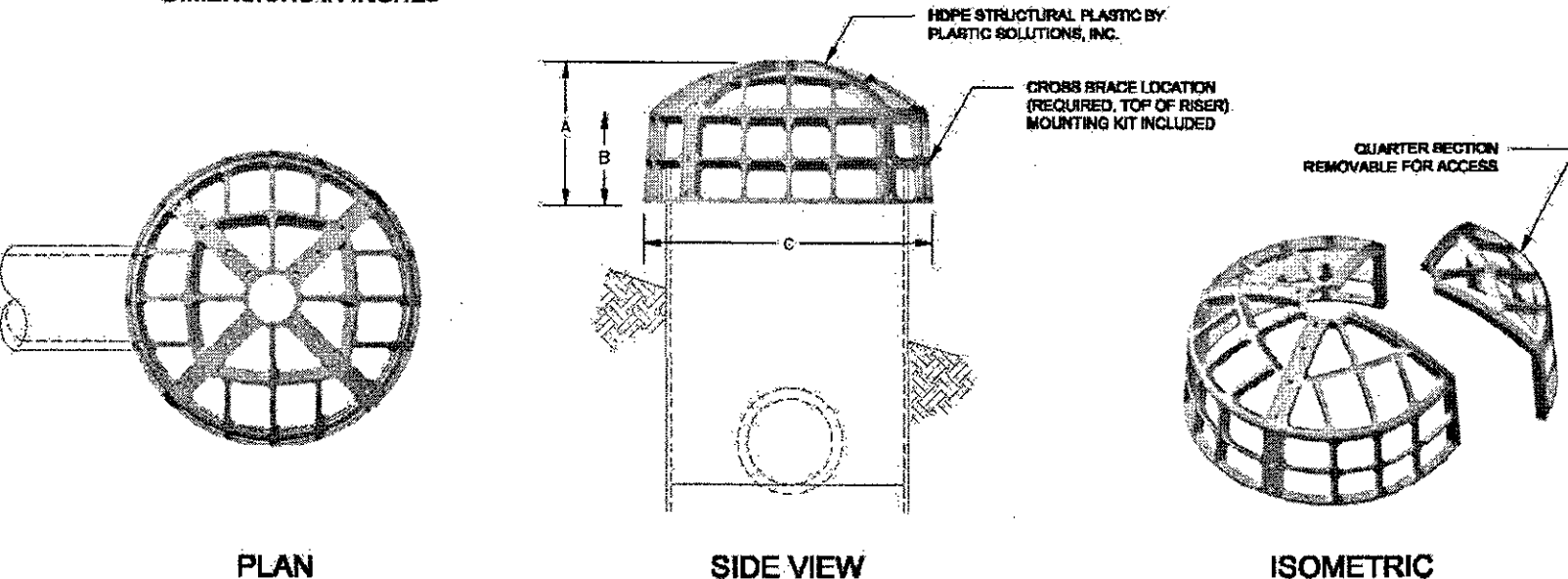
## SECTION A-9: TYPICAL GRAPHICAL DETAILS



Source: SCS Engineering Field Manual  
Figure A-1a. Homogeneous Embankments w/ Seepage Controls

## StormRax™ ROUND SERIES TRASH RACK

VARIABLE RISER PIPE (CWP, HDPE, PVC, DIF, RCP)  
STANDARD 48 INCH RACK SHOWN  
DIMENSIONS IN INCHES



Part No.	Dim A	Dim B	Dim C	Min ID	Min OD	Riser Size
RS-24	17 1/2"	14 1/2"	28"	24"	30"	12, 15, 18"
RS-36	21 1/2"	14 1/2"	40 1/2"	36"	48"	24, 27, 30"
RS-48	27 1/2"	18"	54"	48"	57"	33, 36"
RS-60	27 1/2"	18 1/2"	66 1/2"	60"	70"	48, 54"

RISER PIPE STRUCTURE DIMENSIONS	
INSIDE STRUCTURE DIMENSION	OUTSIDE STRUCTURE DIMENSION
AVAILABLE OPTION	
	HDPE ANTI-VORTEX PLATE

Plastic Solutions, Inc.

PO Box 4396, Winchester, VA 22604  
2396 McGhee Rd., Winchester, VA 22603  
(877) 877-5727 phone  
(540) 722-2219 fax  
http://www.plastic-solutions.com

CUSTOMER:

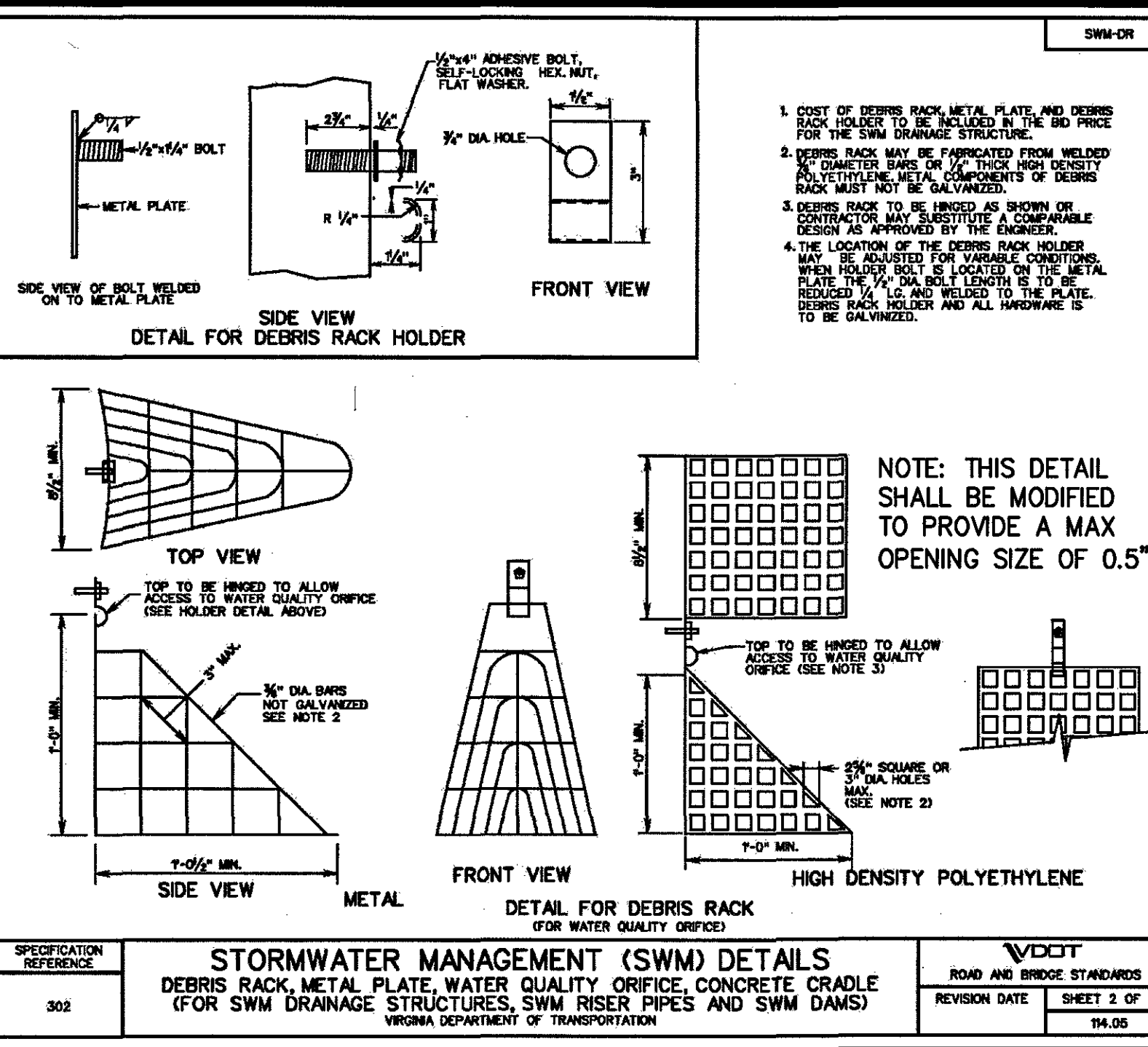
PROJECT:

DATE:

DRAWN BY:

APP'D BY:

DETAIL:



STORMWATER MANAGEMENT (SWM) DETAILS  
DEBRIS RACK, METAL PLATE, WATER QUALITY ORIFICE, CONCRETE CRADLE  
(FOR SWM DRAINAGE STRUCTURES, SWM RISER PIPES AND SWM DAMS)  
VIRGINIA DEPARTMENT OF TRANSPORTATION

BALZER  
AND ASSOCIATES, INC.  
REFLECTING TOMORROW

www.balzer.cc

Roanoke  
New River Valley  
Richmond  
Staunton  
Harrisonburg

RESIDENTIAL LAND DEVELOPMENT ENGINEERING  
SITE DEVELOPMENT ENGINEERING  
LAND USE PLANNING & ZONING  
LANDSCAPE ARCHITECTURE  
LAND SURVEYING  
ARCHITECTURE  
STRUCTURAL ENGINEERING  
TRANSPORTATION ENGINEERING  
ENVIRONMENTAL & SOIL SCIENCE  
WETLAND DELINEATIONS & STREAM EVALUATIONS

Balzer and Associates, Inc.

1208 Corporate Circle

Roanoke, VA 24018

540-772-9580

FAX 540-772-8050

COMMONWEALTH OF VIRGINIA  
CHRISTOPHER P. BURNS  
Lic. No. 047338  
4/21/17  
PROFESSIONAL ENGINEER

PLANTATION STORAGE  
0 PLANTATION ROAD

DETAILS 3

HOLLINS DISTRICT  
ROANOKE COUNTY, VIRGINIA

DRAWN BY BTC  
DESIGNED BY BTC  
CHECKED BY CPB  
DATE 3/14/2017  
SCALE AS SHOWN

REVISIONS:  
4/12/2017  
4/21/2017

APPROVED

SHEET NO.

C14

JOB NO. 04160070.01