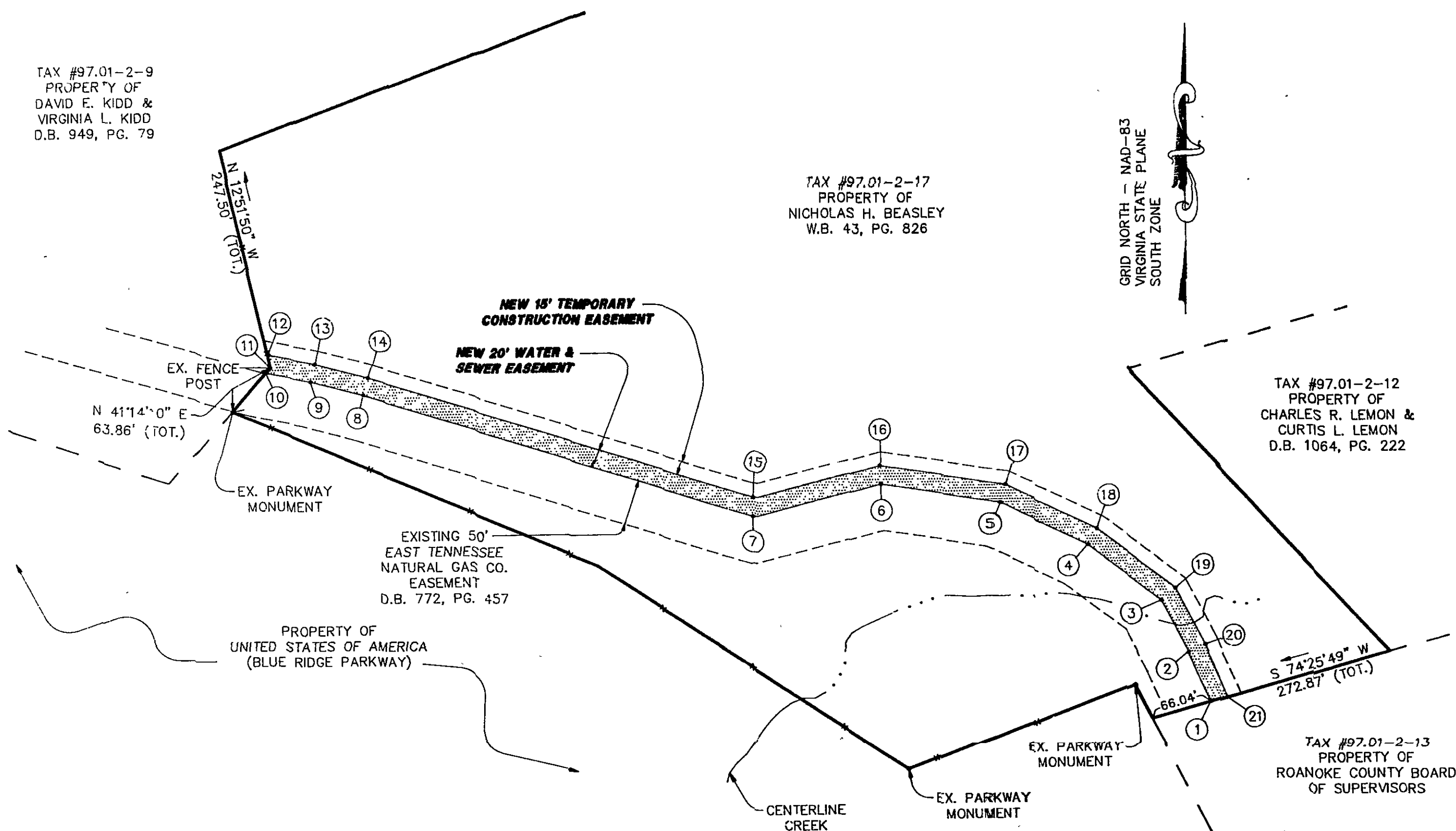


TAX #97.01-2-9
PROPERTY OF
DAVID E. KIDD &
VIRGINIA L. KIDD
D.B. 949, PG. 79

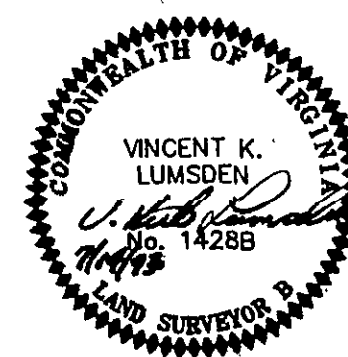
TAX #97.01-2-17
PROPERTY OF
NICHOLAS H. BEASLEY
W.B. 43, PG. 826



LEGEND	
EX.	EXISTING
S.F.	SQUARE FEET
W.B.	WILL BOOK
D.B.	DEED BOOK
MON.	MONUMENT
PG.	PAGE
	NEW WATER & SEWER EASEMENT
- x -	FENCE
TOT.	TOTAL

NOTES:

- THIS PLAT IS FOR THE SOLE PURPOSE OF CREATING A WATER & SEWER EASEMENT AND TEMPORARY CONSTRUCTION EASEMENT AS SHOWN HEREON AND DOES NOT CONSTITUTE AN ACTUAL BOUNDARY SURVEY.
- THIS PLAT WAS PREPARED WITH THE BENEFIT OF A TITLE REPORT PREPARED BY MARTIN, HOPKINS, LEMON, & EDWARDS, P.C., DATED 6 JULY, 1992.
- TOTAL AREA OF NEW WATER & SEWER EASEMENT = 23,850 S.F.
- IT IS THE INTENT OF THIS PLAT TO CREATE THE 20' WATER AND SEWER EASEMENT AS SHOWN HEREON TO BE DIRECTLY ADJACENT TO THE EAST TENNESSEE NATURAL GAS COMPANY EASEMENT RECORDED IN D.B. 772, PG. 457.
- THE NEW EASEMENT AS SHOWN HEREON MAY BE AFFECTED BY THE FOLLOWING ENCUMBRANCES:
 - ROANOKE RAILWAY AND ELECTRIC CO. EASEMENT, D.B. 150, PG. 416.
 - APPALACHIAN ELECTRIC POWER CO. EASEMENT, D.B. 334, PG. 281.
 - APPALACHIAN ELECTRIC POWER CO. EASEMENT, D.B. 358, PG. 117.
 - POSSIBLE PRESCRIPTIVE EASEMENT, D.B. 290, PG. 41.
 - LIMITED ACCESS TO BLUE RIDGE PARKWAY, D.B. 444, PG. 438.
- THE NEW EASEMENT AS SHOWN HEREON ARE NOT AFFECTED BY THE FOLLOWING ENCUMBRANCES:
 - TIMBER AGREEMENT, D.B. 1360, PG. 1780.
 - RIPARIAN RIGHTS OF OTHERS TO BACK CREEK, D.B. 290, PG. 41.
 - EAST TENNESSEE NATURAL GAS CO. EASEMENT, D.B. 772, PG. 457 (NOT LISTED IN TITLE REPORT - SEE NOTE #2).



NEW 20' WATER & SEWER EASEMENT		
1-2	N 23°23'30" W	59.94'
2-3	N 27°07'27" W	65.38'
3-4	N 52°58'13" W	102.06'
4-5	N 64°51'01" W	109.30'
5-6	N 81°17'44" W	133.26'
6-7	S 75°49'05" W	147.53'
7-8	N 72°42'42" W	453.23'
8-9	N 74°58'07" W	60.91'
9-10	N 78°57'25" W	50.15'
10-11	N 41°14'10" E	7.18'
11-12	N 12°51'50" W	15.09'
12-13	S 78°57'25" E	53.35'
13-14	S 74°58'07" E	62.00'
14-15	S 72°42'42" E	447.99'
15-16	N 75°49'05" E	145.94'
16-17	S 81°17'44" E	140.20'
17-18	S 64°51'01" E	114.27'
18-19	S 52°58'13" E	108.73'
19-20	S 27°07'27" E	70.62'
20-21	S 23°23'30" E	63.34'
21-1	S 74°25'49" W	20.19'
TOTAL AREA =		23,850

TAX #97.01-2-12
PROPERTY OF
CHARLES R. LEMON &
CURTIS L. LEMON
D.B. 1064, PG. 222

TAX #97.01-2-13
PROPERTY OF
ROANOKE COUNTY BOARD
OF SUPERVISORS

IN THE CLERK'S OFFICE OF THE CIRCUIT COURT OF ROANOKE COUNTY, VIRGINIA, THIS PLAT WITH THE CERTIFICATE OF ACKNOWLEDGEMENT THERETO ANNEXED IS ADMITTED TO RECORD ON August 4, 1993, AT 11:52 O'CLOCK A.M.

TESTEE: STEVEN A. MCGRAW, CLERK

Susan C. Gregory
DEPUTY CLERK

PLAT SHOWING
NEW 20' WATER & SEWER EASEMENT
AND NEW TEMPORARY
CONSTRUCTION EASEMENT

BEING GRANTED TO
THE COUNTY OF ROANOKE
BY
NICHOLAS H. BEASLEY

ACROSS TAX #97.01-2-17

SCALE: 1" = 100' DATE: 25 NOVEMBER 1992
REVISED: 14 JULY 1993

LUMSDEN ASSOCIATES, P.C.
ENGINEERS-SURVEYORS-PLANNERS
ROANOKE, VIRGINIA

COMM. #91-376E