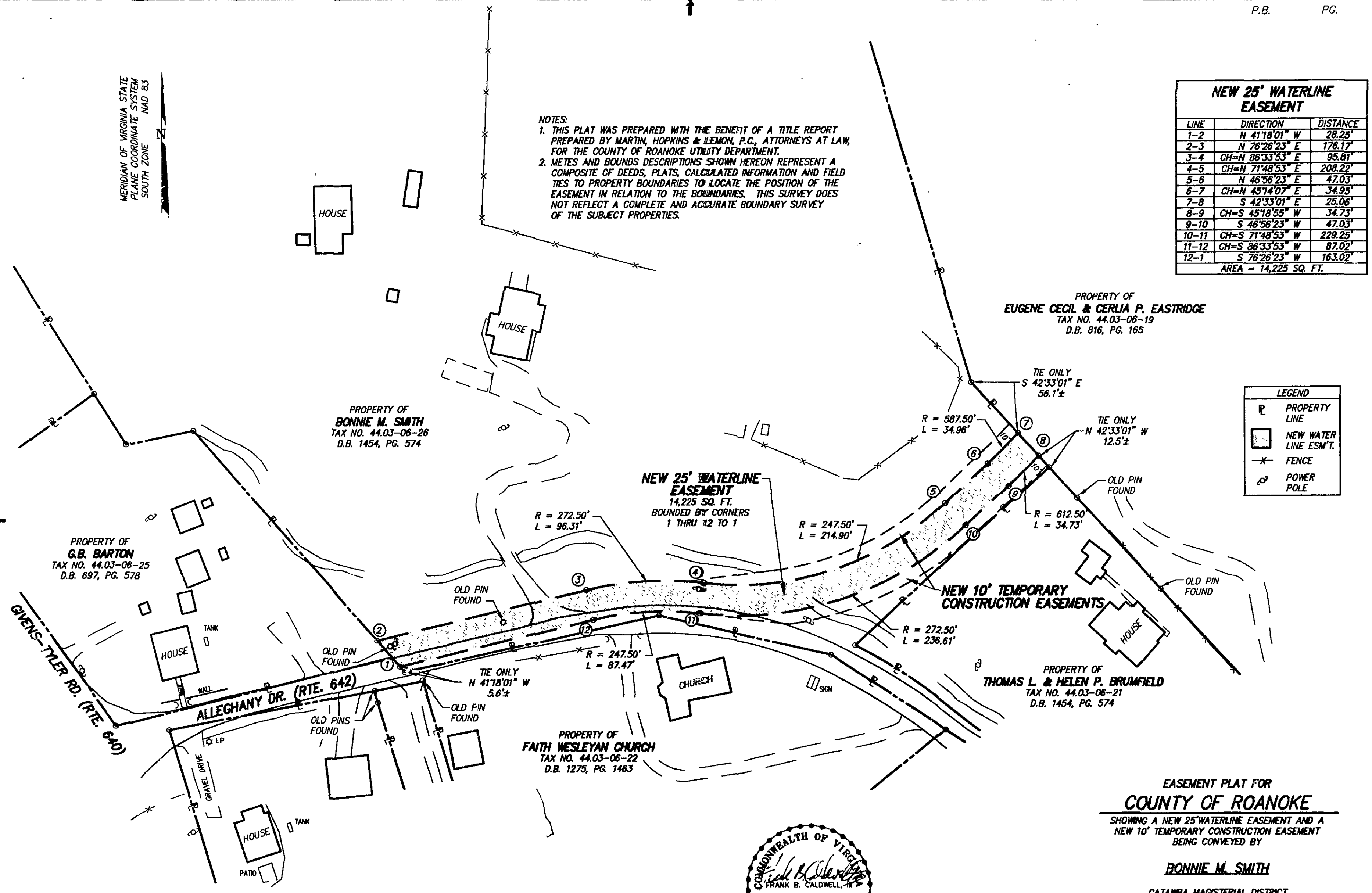


MERIDIAN OF VIRGINIA STATE
PLANE COORDINATE SYSTEM
SOUTH ZONE
NAD 83

NOTES:
1. THIS PLAT WAS PREPARED WITH THE BENEFIT OF A TITLE REPORT
PREPARED BY MARTIN, HOPKINS & LEMON, P.C., ATTORNEYS AT LAW,
FOR THE COUNTY OF ROANOKE UTILITY DEPARTMENT.
2. METES AND BOUNDS DESCRIPTIONS SHOWN HEREON REPRESENT A
COMPOSITE OF DEEDS, PLATS, CALCULATED INFORMATION AND FIELD
TIES TO PROPERTY BOUNDARIES TO LOCATE THE POSITION OF THE
EASEMENT IN RELATION TO THE BOUNDARIES. THIS SURVEY DOES
NOT REFLECT A COMPLETE AND ACCURATE BOUNDARY SURVEY
OF THE SUBJECT PROPERTIES.

NEW 25' WATERLINE EASEMENT		
LINE	DIRECTION	DISTANCE
1-2	N 41°18'01" W	28.25'
2-3	N 76°26'23" E	176.17'
3-4	CH=N 86°33'53" E	95.81'
4-5	CH=N 71°48'53" E	208.22'
5-6	N 46°56'23" E	47.03'
6-7	CH=N 45°14'07" E	34.95'
7-8	S 42°33'01" E	25.06'
8-9	CH=S 45°18'55" W	34.73'
9-10	S 46°56'23" W	47.03'
10-11	CH=S 71°48'53" W	229.25'
11-12	CH=S 86°33'53" W	87.02'
12-1	S 76°26'23" W	163.02'
AREA = 14,225 SQ. FT.		

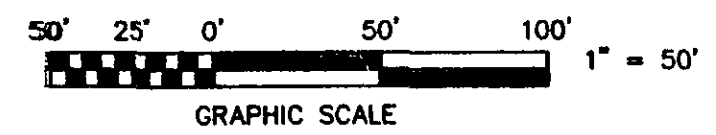
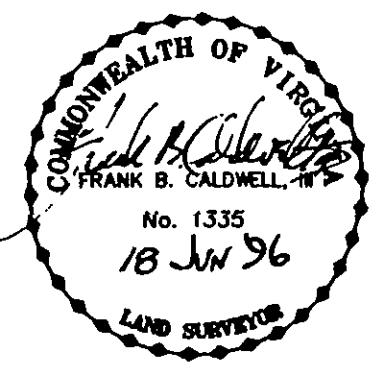
LEGEND	
	PROPERTY LINE
	NEW WATER LINE ESM'T.
	FENCE
	POWER POLE



IN THE CLERK'S OFFICE OF THE CIRCUIT COURT OF THE COUNTY OF ROANOKE,
VIRGINIA, THIS MAP WAS PRESENTED AND ADMITTED TO RECORD AT 10:43 O'CLOCK
A.M. ON THIS 30 DAY OF Aug 1996.

TESTE: STEVEN A. McGRAW
CLERK

BY: Robert Clark
DEPUTY CLERK



EASEMENT PLAT FOR
COUNTY OF ROANOKE
SHOWING A NEW 25' WATERLINE EASEMENT AND A
NEW 10' TEMPORARY CONSTRUCTION EASEMENT
BEING CONVEYED BY

BONNIE M. SMITH

CATAMBA MAGISTERIAL DISTRICT
ROANOKE COUNTY, VIRGINIA

T. P. PARKER & SON
ENGINEERS - SURVEYORS - PLANNERS

TAX NO.: 44.03-06-26
DRAWN: JUB
CALC.:

SCALE: 1" = 50'
JUNE 17, 1996
W.O.: 92-1078