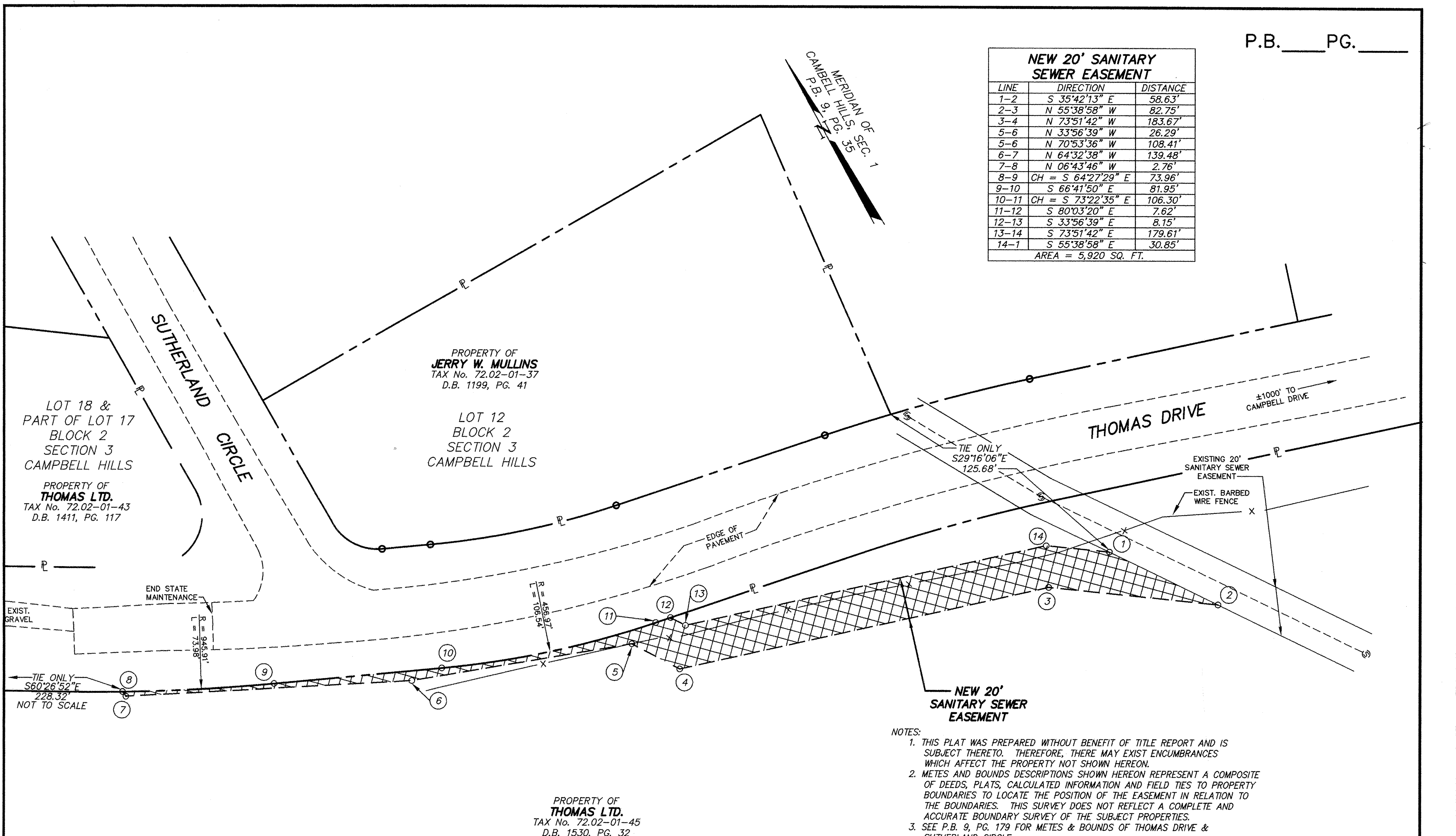


NEW 20' SANITARY SEWER EASEMENT		
LINE	DIRECTION	DISTANCE
1-2	S 35°42'13" E	58.63'
2-3	N 55°38'58" W	82.75'
3-4	N 73°51'42" W	183.67'
5-6	N 33°56'39" W	26.29'
5-6	N 70°53'36" W	108.41'
6-7	N 64°32'38" W	139.48'
7-8	N 06°43'46" W	2.76'
8-9	CH = S 64°27'29" E	73.96'
9-10	S 66°41'50" E	81.95'
10-11	CH = S 73°22'35" E	106.30'
11-12	S 80°03'20" E	7.62'
12-13	S 33°56'39" E	8.15'
13-14	S 73°51'42" E	179.61'
14-1	S 55°38'58" E	30.85'
AREA = 5,920 SQ. FT.		



- NOTES:
1. THIS PLAT WAS PREPARED WITHOUT BENEFIT OF TITLE REPORT AND IS SUBJECT THERETO. THEREFORE, THERE MAY EXIST ENCUMBRANCES WHICH AFFECT THE PROPERTY NOT SHOWN HEREON.
 2. METES AND BOUNDS DESCRIPTIONS SHOWN HEREON REPRESENT A COMPOSITE OF DEEDS, PLATS, CALCULATED INFORMATION AND FIELD TIES TO PROPERTY BOUNDARIES TO LOCATE THE POSITION OF THE EASEMENT IN RELATION TO THE BOUNDARIES. THIS SURVEY DOES NOT REFLECT A COMPLETE AND ACCURATE BOUNDARY SURVEY OF THE SUBJECT PROPERTIES.
 3. SEE P.B. 9, PG. 179 FOR METES & BOUNDS OF THOMAS DRIVE & SUTHERLAND CIRCLE.

IN THE CLERK'S OFFICE OF THE CIRCUIT COURT OF THE COUNTY OF ROANOKE, VIRGINIA THIS MAP WAS PRESENTED AND ADMITTED TO RECORD AT 2:04 O'CLOCK P.M. ON THIS 15 DAY OF Sept, 1997.

TESTE: STEVEN A. McGRAW

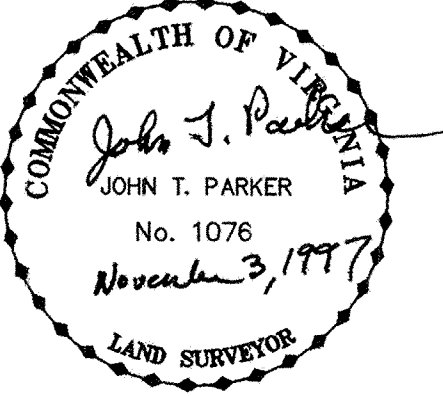
BY: *John T. Parker*
DEPUTY CLERK

LEGEND	
	PROPERTY LINE
	NEW SAN. SEWER ESM'T.
	NEW TEMP. CONST. ESM'T.
	FENCE
	UTILITY POLE

TAX NO. 72.02-01-45
N.B. DRAWN JPR
CALC. JPR CHK'D DAP
CLOSED: JPR

EASEMENT PLAT FOR
COUNTY OF ROANOKE
SHOWING A NEW 20' SANITARY SEWER
EASEMENT BEING CONVEYED BY
THOMAS LTD.
CATAWBA MAGISTERIAL DISTRICT
ROANOKE COUNTY, VIRGINIA

TPP&S
ENGINEERS
SURVEYORS
PLANNERS
T. P. PARKER & SON
816 Boulevard
Post Office Box 39
Salem, Virginia 24153



SCALE: 1"=30'
DATE: NOVEMBER 3, 1997
D- 47467
W.O.: 96-0180