

MERIDIAN OF VIRGINIA STATE
PLANE COORDINATE SYSTEM
SOUTH ZONE
NAD 83

PROPERTY OF
J. SPENCER FRANTZ, ET ALS
TAX PARCEL 35.00-01-31
D.B. 1314, PG. 1604

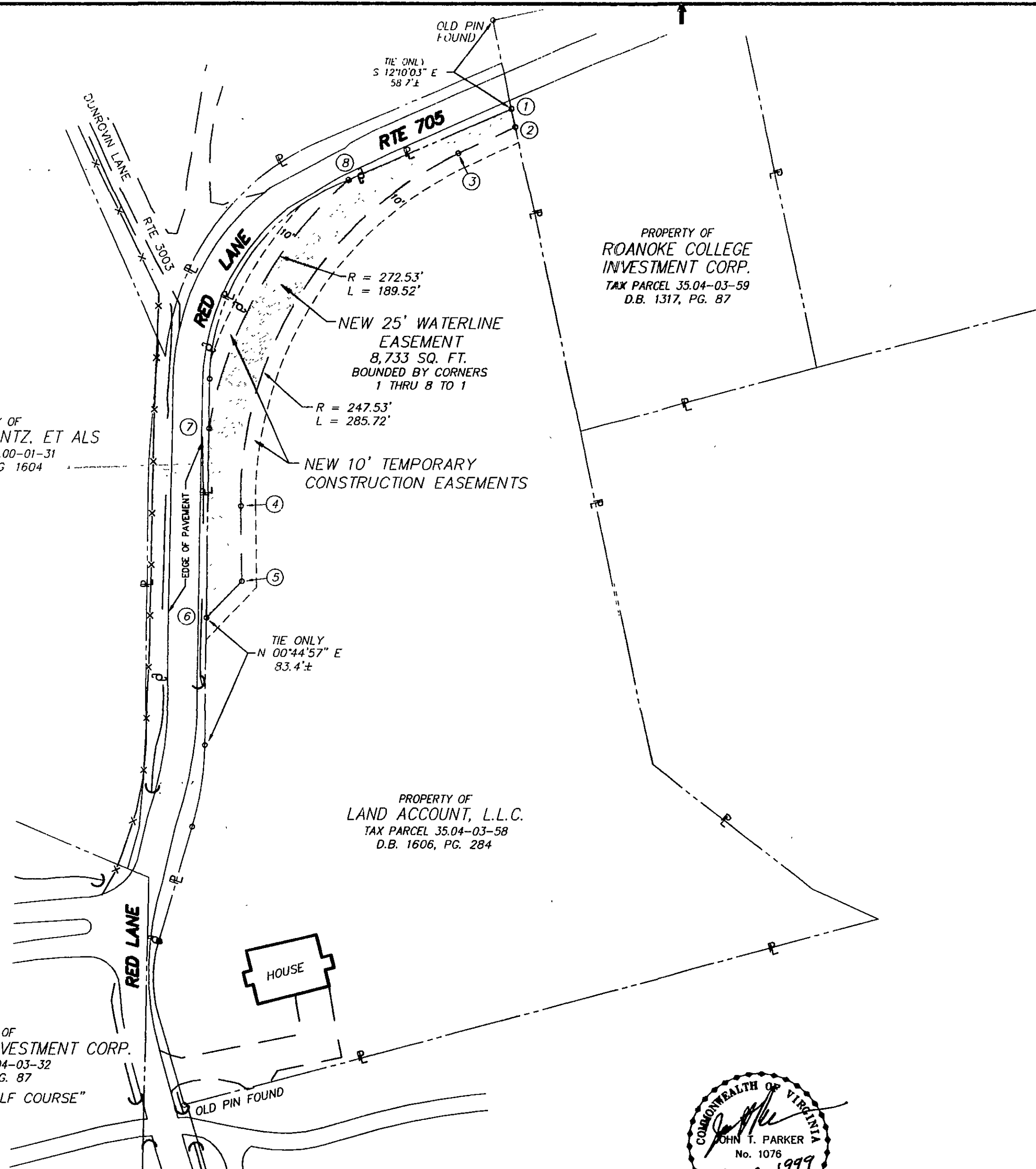
PROPERTY OF
ROANOKE COLLEGE INVESTMENT CORP.
TAX PARCEL 35.04-03-32
D.B. 1317, PG. 87
"HANGING ROCK GOLF COURSE"

IN THE CLERK'S OFFICE OF THE CIRCUIT COURT OF THE COUNTY OF ROANOKE,
VIRGINIA THIS MAP WAS PRESENTED AND ADMITTED TO RECORD AT 09:01 O'CLOCK
A.M. ON THIS 5 DAY OF Jan 2000, 1999.

TESTE: STEVEN A. McGRAW
CLERK

BY: *[Signature]*
DEPUTY CLERK

CLOSED BY CLW



NEW 25' WATERLINE EASEMENT		
LINE	DIRECTION	DISTANCE
1-2	S 12°10'03\"	12.22'
2-3	S 65°12'31\"	40.70'
3-4	CH=S 32°08'26\"	270.12'
4-5	S 00°55'38\"	49.39'
5-6	S 44°04'22\"	33.77'
6-7	N 00°44'55\"	124.00'
7-8	CH=N 29°42'43\"	185.72'
8-1	N 66°43'04\"	116.59'
AREA = 8,733 SQ. FT.		

LEGEND	
	PROPERTY LINE
	NEW WATER LINE ESM'T
	FENCE
	POWER POLE

- NOTES:
- THIS PLAT IS BASED ON A TITLE REPORT PREPARED BY MARTIN, LEMON & HOPKINS, P.C., ATTORNEYS AT LAW, LTIC FILE. X96-343, FOR THE COUNTY OF ROANOKE UTILITY DEPARTMENT SHOWN HEREON.
 - METES AND BOUNDS DESCRIPTIONS SHOWN HEREON REPRESENT A COMPOSITE OF DEEDS, PLATS, CALCULATED INFORMATION AND FIELD TIES TO PROPERTY BOUNDARIES TO LOCATE THE POSITION OF THE EASEMENT IN RELATION TO THE BOUNDARIES. THIS SURVEY DOES NOT REFLECT A COMPLETE AND ACCURATE BOUNDARY SURVEY OF THE SUBJECT PROPERTIES.

EASEMENT PLAT FOR
COUNTY OF ROANOKE
SHOWING A NEW 25' WATERLINE EASEMENT AND A
NEW 10' TEMPORARY CONSTRUCTION EASEMENT BEING
CONVEYED BY
LAND ACCOUNT, L.L.C.

CATAWBA MAGISTERIAL DISTRICT
ROANOKE COUNTY, VIRGINIA

T. P. PARKER & SON
ENGINEERS - SURVEYORS - PLANNERS

TAX NO.: 35.04-03-58
DRAWN: DAP
CALC.: DAP

SCALE: 1" = 50'
APRIL 19, 1996
W.O.: 92-1078
REVISED: 2 DECEMBER 1999

