

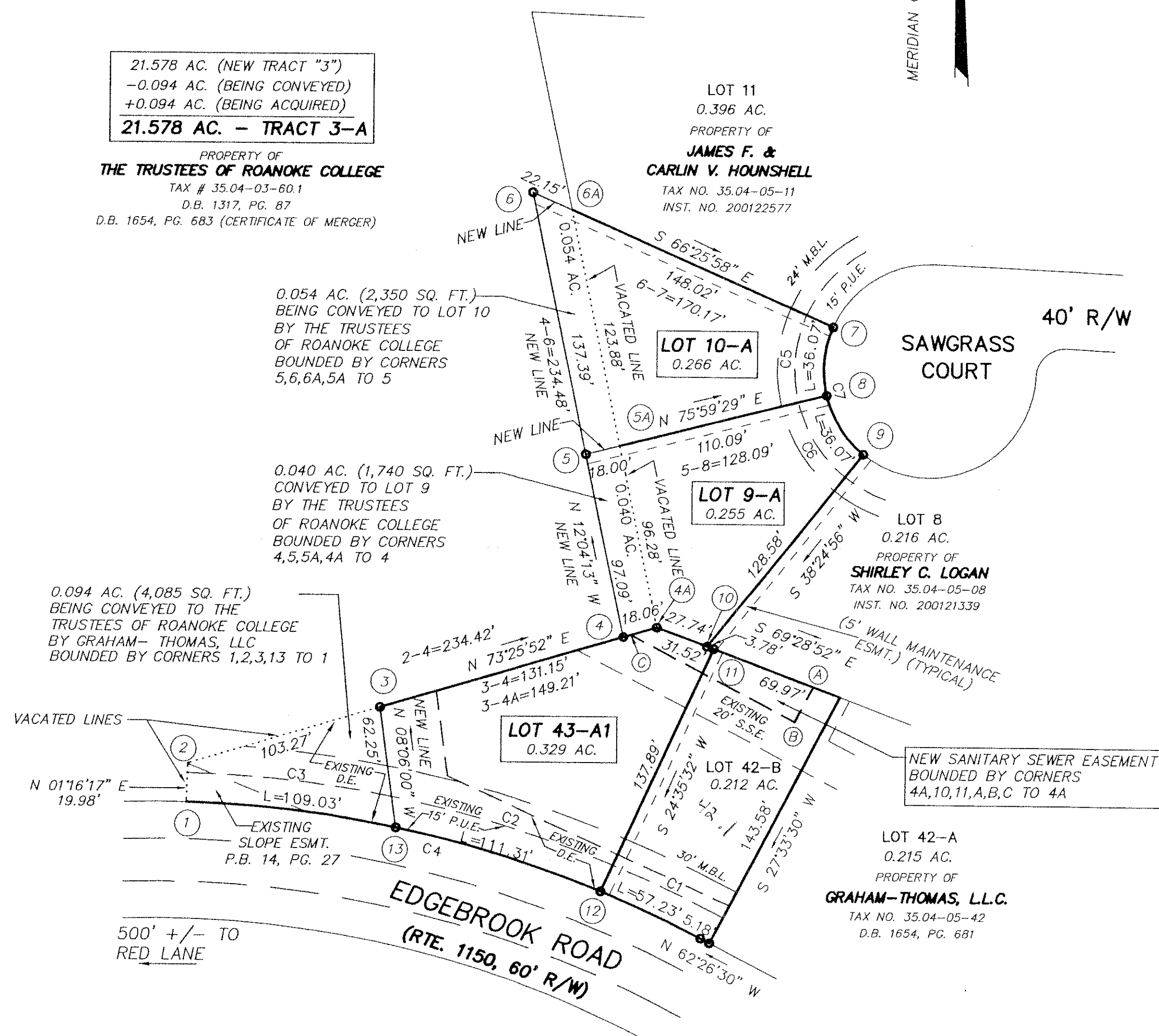
REFERENCE MAPS:

1. SURVEY FOR ROANOKE COLLEGE INVESTMENT CORPORATION BY T. P. PARKER & SON DATED FEBRUARY 4, 1992 AND RECORDED IN P.B. 14, PG. 58.
2. ROAD AND EASEMENT DEDICATION PLAT FOR ROANOKE COLLEGE INVESTMENT CORPORATION BY T. P. PARKER & SON DATED JAN. 6, 1992 AND RECORDED IN P.B. 14, PG. 27.
3. MAP OF THE FAIRWAYS AT HANGING ROCK BY T. P. PARKER & SON DATED MAY 24, 2000, REVISED NOVEMBER 21, 2000 AND RECORDED IN P.B. 24, PG. 52.
4. MAP OF RESUBDIVISION OF LOTS 41, 42 & 43, THE FAIRWAYS AT HANGING ROCK, BY T. P. PARKER & SON DATED AUGUST 19, 2002 AND RECORDED IN P.B. 25, PG. 161.
5. MAP OF RESUBDIVISION OF LOTS 9, 10 & 43-A, THE FAIRWAYS AT HANGING ROCK, BY T. P. PARKER & SON DATED APRIL 7, 2003 AND RECORDED IN P.B. 26, PG. 101.

LEGEND:

M.B.L. MINIMUM BUILDING LINE  
P.U.E. PUBLIC UTILITY EASEMENT  
R/W RIGHT OF WAY  
D.E. DRAINAGE EASEMENT  
S.E. SLOPE EASEMENT  
S.S.E. SANITARY SEWER EASEMENT  
ESMT. EASEMENT

21.578 AC. (NEW TRACT "3")  
-0.094 AC. (BEING CONVEYED)  
+0.094 AC. (BEING ACQUIRED)  
**21.578 AC. - TRACT 3-A**  
PROPERTY OF  
**THE TRUSTEES OF ROANOKE COLLEGE**  
TAX # 35.04-03-60.1  
D.B. 1317, PG. 87  
D.B. 1654, PG. 683 (CERTIFICATE OF MERGER)



INST. NO. 2003-21325

COORDINATES

CORNER	NORTHING	EASTING
1	5170.00	5011.88
2	5189.98	5012.32
3	5219.43	5111.31
4	5256.83	5237.01
4A	5261.98	5254.32
5	5351.77	5216.71
6	5486.12	5187.98
7	5418.09	5343.96
8	5382.78	5341.01
9	5353.00	5360.19
10	5252.25	5280.30
11	5250.93	5283.83
12	5125.55	5226.45
13	5157.80	5120.08
1	5170.00	5011.88

THESE COORDINATES ARE BASED ON AN ASSUMED DATUM.

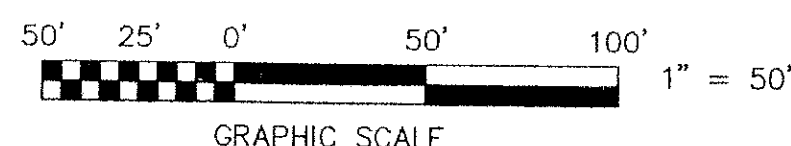
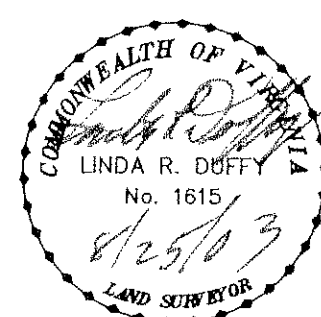
THIS MAP SUPERSEDES P.B. 26, PG. 101 AND P.B. 26, PG. 117 SHOWING NAME CHANGE FROM ROANOKE COLLEGE INVESTMENT CORP. TO THE TRUSTEES OF ROANOKE COLLEGE

MAP OF  
RESUBDIVISION OF LOTS 9, 10 & 43-A  
**THE FAIRWAYS AT  
HANGING ROCK**

P.B. 24, PG. 52 & P.B. 25, PG. 161  
LOTS 10 & 43-A (PROPERTY OF GRAHAM-THOMAS, L.L.C.)  
LOT 9 (PROPERTY OF NANCY H. LOGAN)  
AND NEW TRACT "3" (21.578 AC.) (PROPERTY OF THE TRUSTEES OF ROANOKE COLLEGE)  
CREATING HEREON LOT 43-A1 (0.329 AC.), LOT 9-A (0.255 AC.), LOT 10-A (0.266 AC.) & TRACT 3-A (21.578 AC.)

SITUATE ON EDGEBROOK ROAD & SAWGRASS COURT  
CATAWBA MAGISTERIAL DISTRICT  
ROANOKE COUNTY, VIRGINIA

TAX # 35.04-05-9,10,42,1,43  
35.04-03-60.1  
DRAWN: JTP, JR./Z-LRD-16  
CALC: JTP, JR.  
SCALE: 1" = 50'  
DATE: AUGUST 15, 2003  
N.B. F-60, 64  
W.O. 03-0171



CURVE TABLE						
CURVE	LENGTH	RADIUS	DELTA	TANGENT	CHD BRG	CHD LENGTH
C1	57.23'	605.00'	05°25'12"	28.64'	N 65°09'07" W	57.21'
C2	111.31'	605.00'	10°32'30"	55.81'	N 73°07'58" W	111.15'
C3	109.03'	605.00'	10°19'32"	54.66'	N 83°33'59" W	108.88'
C4	277.57'	605.00'	26°17'14"	141.27'	N 75°35'08" W	275.15'
C5	36.07'	55.00'	37°34'33"	18.71'	S 04°46'45" W	35.43'
C6	36.07'	55.00'	37°34'33"	18.71'	S 32°47'48" E	35.43'
C7	72.14'	55.00'	75°09'06"	42.32'	S 14°00'31" E	67.08'

CLOSED BY JTP, JR.

SHEET 2 OF 2

P.B. 27, PG. 003

**TPP&S** T. P. PARKER & SON  
ENGINEERS SURVEYORS PLANNERS  
818 Boulevard  
Post Office Box 39  
Salem, Virginia 24153  
540-387-1153