

NOTES
SEGMENTS OF TEMPORARY CUL DE SAC OUTSIDE
THE 50' RIGHT OF WAY OF MADISON AVENUE SHALL
REVERT TO ADJOINING PROPERTY OWNERS WHEN
STREET CONSTRUCTION IS EXTENDED

AN ALLEY AND A PORTION OF MADISON AVENUE NW
CLOSED BY ORDINANCE NO. 21930 ADOPTED BY CITY
COUNCIL DECEMBER 16, 1974. ORDINANCE NO. 21930
IS RECORDED IN THE OFFICE OF THE CLERK OF
THE CIRCUIT COURT, ROANOKE, VIRGINIA IN DEED
BOOK NO. 1356 PAGE NO. 325

IRON PINS AT ALL PROPERTY CORNERS

REMAINING PROPERTY OF CITY OF ROANOKE
REDEVELOPMENT AND HOUSING AUTHORITY

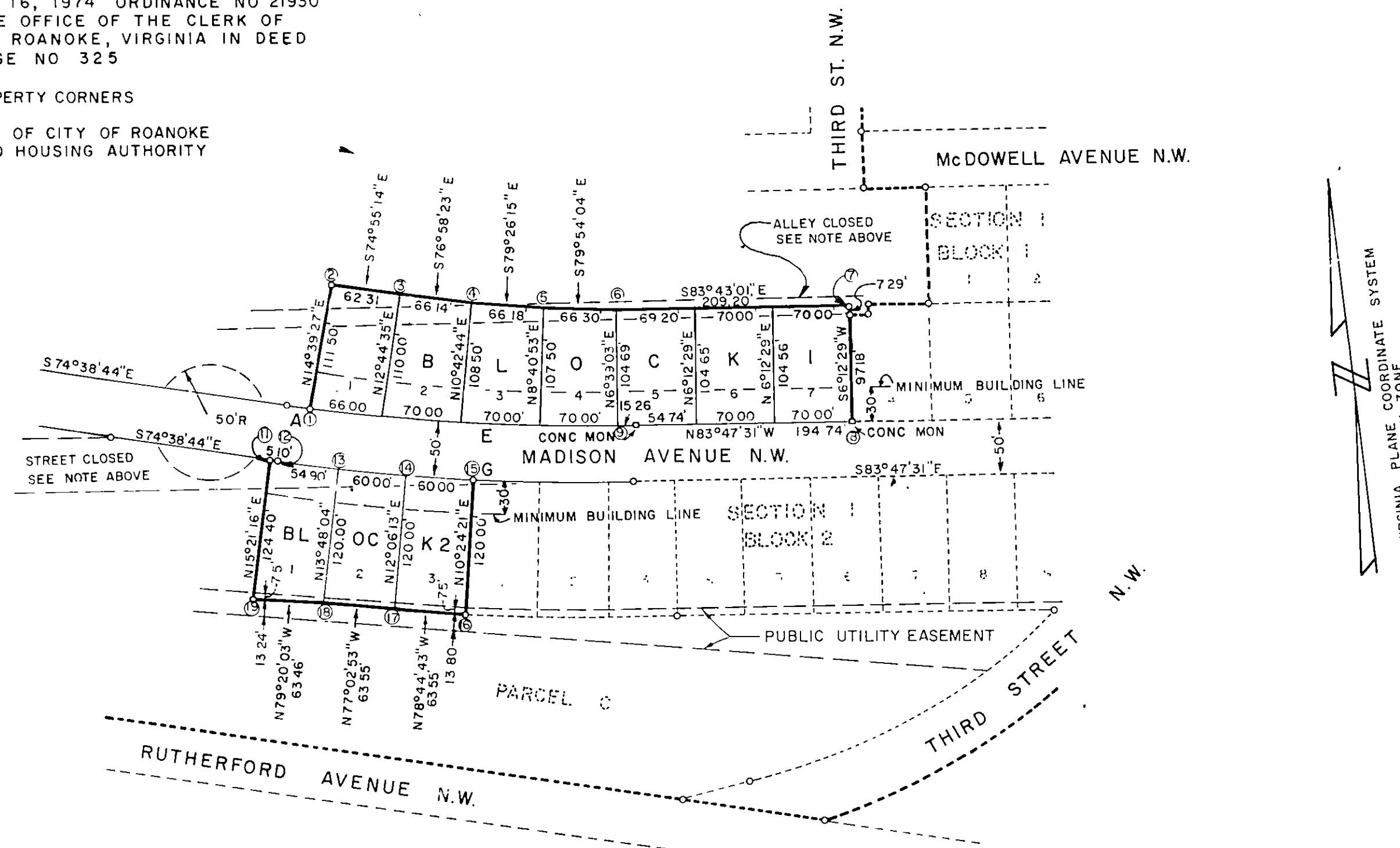
KNOW ALL MEN BY THESE PRESENTS, TO WIT:
THE UNDERSIGNED OWNER HEREBY CERTIFIES THAT THE SUBDIVISION OF
LAND AS APPEARS ON THIS PLAT IS WITH THE FREE CONSENT AND
IN ACCORDANCE WITH THE DESIRE OF THE SAID OWNER AND IS PURSUANT
TO AND IN COMPLIANCE WITH THE PROVISIONS OF TITLE 15.1 OF THE 1950
CODE OF VIRGINIA, AS AMENDED, AND THE SUBDIVISION ORDINANCE OF
THE CITY OF ROANOKE, VIRGINIA, AS AMENDED
THE SAID OWNER HEREBY DEDICATES TO THE CITY OF ROANOKE, VIRGINIA,
IN FEE SIMPLE, SUCH PORTIONS OF THE PREMISES PLATTED AS ARE ON
THIS PLAT SET APART FOR STREETS; AND DEDICATES TO THE SAID CITY
OF ROANOKE, VIRGINIA, ALL PUBLIC EASEMENTS INDICATED ON SAID PLAT.
IN WITNESS WHEREOF ARE HEREBY PLACED THE FOLLOWING
SIGNATURE AND SEAL ON APRIL 15 1975
CITY OF ROANOKE REDEVELOPMENT AND HOUSING AUTHORITY

BY Russell L. Henley EXECUTIVE DIRECTOR

STATE OF VIRGINIA } TO WIT:
CITY OF ROANOKE

I HOMER M. MARTIN A NOTARY PUBLIC IN AND FOR
THE AFORESAID CITY AND STATE DO HEREBY CERTIFY
THAT RUSSELL B. HENLEY
WHOSE NAME AS SUCH IS SIGNED TO THE FOREGOING WRITING
DATED APRIL 15 1975 HAS PERSONALLY
APPEARED BEFORE ME IN MY AFORESAID CITY AND ACKNOWLEDGED
THE SAME APRIL 15 1975
MY COMMISSION EXPIRES DECEMBER 6, 1977

Homer M. Martin
NOTARY PUBLIC



BOUNDARY LINE CALCULATIONS

BLOCK 1						
CORS	BEARING	DIST	N	S	E	W
1-2	N14°39'27"E	111.50	107.872		28.214	
2-3	S74°55'14"E	62.31		16.210	60.164	
3-4	S76°58'23"E	66.14		14.909	64.438	
4-5	S79°26'15"E	66.18		12.131	65.059	
5-6	S79°54'04"E	66.30		11.626	65.273	
6-7	S83°43'01"E	209.20		22.896	207.943	
7-8	S 6°12'29"W	104.47		103.857		11.297
8-9	N83°47'31"W	194.74	21.059			193.598
9-1	N79°34'01"W	291.01	52.697			286.199
TOTALS			181.628	181.629	491.091	491.094

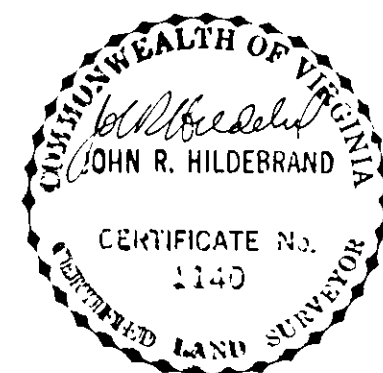
TOTAL AREA IN BLOCK 1 = 51,096.941 Sq. ft.

BLOCK 2						
CORS	BEARING	DIST	N	S	E	W
11-12	S74°38'44"E	51.0		13.50	4.918	
12-13	S75°25'20"E	54.90		13.818	53.133	
13-14	S77°02'52"E	60.00		13.448	58.474	
14-15	S78°44'43"E	60.00		11.710	58.846	
15-16	S10°24'21"W	120.00		118.026		21.675
16-17	N78°44'43"W	63.55	12.403			62.328
17-18	N77°02'53"W	63.55	14.244			61.933
18-19	N79°20'03"W	63.46	11.745			62.364
19-11	N15°21'16"E	124.40	119.960		32.940	
TOTALS			158.352	158.352	208.311	208.300

TOTAL AREA IN BLOCK 2 = 22,135.931 Sq. ft.

CURVE DATA

BLOCK 1	DELTA	RADIUS	TANGENT	ARC	CHORD BEARING	CHORD LENGTH
E	9°08'47"	1975.00'	157.98'	315.28'	S79°13'07.5"E	314.94'
A	0°41'48"	1975.00'	12.01'	24.02'	S74°59'38"E	24.02'
LOT 1	1°54'53"	1975.00'	33.00'	66.00'	S76°17'59"E	66.00'
LOT 2	2°01'51"	1975.00'	35.01'	70.00'	S78°16'21"E	70.00'
LOT 3	2°01'51"	1975.00'	35.01'	70.00'	S80°18'11"E	70.00'
LOT 4	2°01'51"	1975.00'	35.01'	70.00'	S82°20'02"E	70.00'
LOT 5	0°26'33"	1975.00'	7.63'	15.26'	S83°34'15"E	15.26'
BLOCK 2						
LOT 1	1°32'12"	2025.00'	27.45'	54.90'	S75°25'20"E	54.90'
LOT 2	1°41'51"	2025.00'	30.00'	60.00'	S77°02'52"E	60.00'
LOT 3	1°41'51"	2025.00'	30.00'	60.00'	S78°44'43"E	60.00'
G	9°08'47"	2025.00'	161.98'	323.27'	S79°13'07.5"E	322.92'



J.R. HILDEBRAND, CERTIFIED LAND SURVEYOR
CERTIFICATE NO. 1140

APPROVED: Lochar M. Murrell 5-7-75
AGENT, CITY OF ROANOKE
PLANNING COMMISSION

Charles L. Hildebrand 5-7-75
ENGINEER, CITY OF ROANOKE

IN THE CLERKS OFFICE OF THE CIRCUIT COURT OF THE
CITY OF ROANOKE, VIRGINIA, THIS INSTRUMENT WITH
THE CERTIFICATE OF ACKNOWLEDGEMENT THERETO
ANNEXED, IS ADMITTED TO RECORD ON May 12, 1975
AT 2:10 O'CLOCK P.M.
TESTE: WALKER R. CARTER JR., CLERK
BY Edna J. Janelle, Deputy Clerk

MAP OF SECTION TWO
GAINSBORO NEIGHBORHOOD DEVELOPMENT PROGRAM

PROGRAM NO. VA. A-6
CITY OF ROANOKE REDEVELOPMENT AND HOUSING AUTHORITY
ROANOKE, VA.

HAYES, SEAY, MATTERN AND MATTERN
ARCHITECTS ENGINEERS PLANNERS
ROANOKE, VIRGINIA WASHINGTON, D.C.

DRAWN JMR
CHECKED SES
APPROVED WMZ

SCALE 1" = 100'

DATE: MARCH 5, 1975
A & E COMMISSION NO. 3756A