

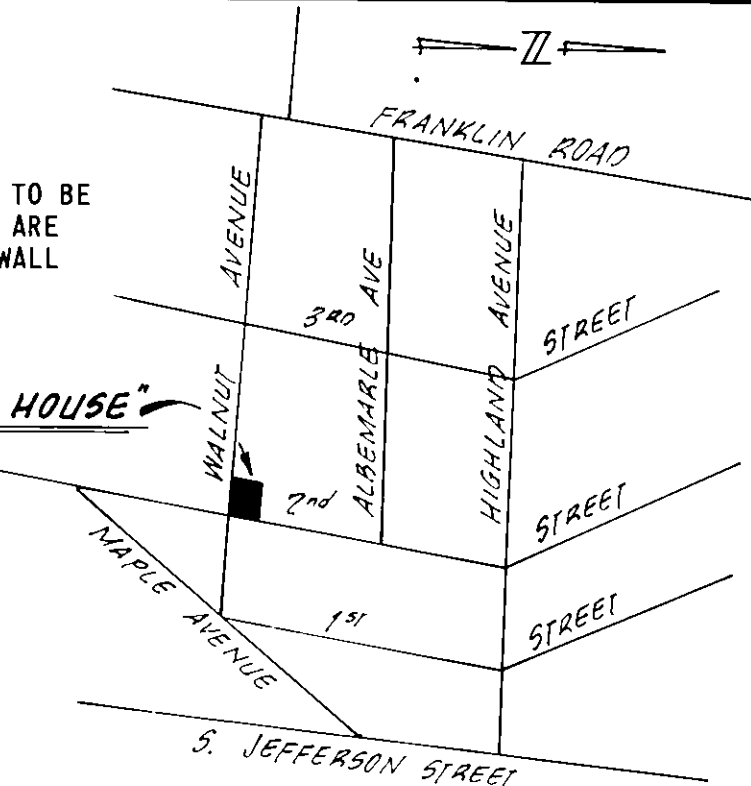
NOTES:

1. INCLUDED AS A PART OF EACH UNIT (EXCLUDING BASEMENT UNITS) IS THE PLASTER WALL COVERING, ENCLOSING SUCH UNIT WHICH IS ASSUMED TO BE 3/4" THICK. ALL DIMENSIONS SHOWN ON THIS PLAT ARE INTERIOR DIMENSIONS CALCULATED FROM INSIDE OF WALL STRUCTURE TO INSIDE OF WALL STRUCTURE.
2. VERTICAL DATUM U.S.G.S. MEAN SEA LEVEL

LEGEND:

- *1139-10 DENOTES STREET ADDRESS AND UNIT NO.
- 502# DENOTES FLOOR AREA
- 1139-10 DENOTES LIMITED COMMON ELEMENT
- 1139-10 DENOTES GENERAL COMMON ELEMENT

"WALKER HOUSE"



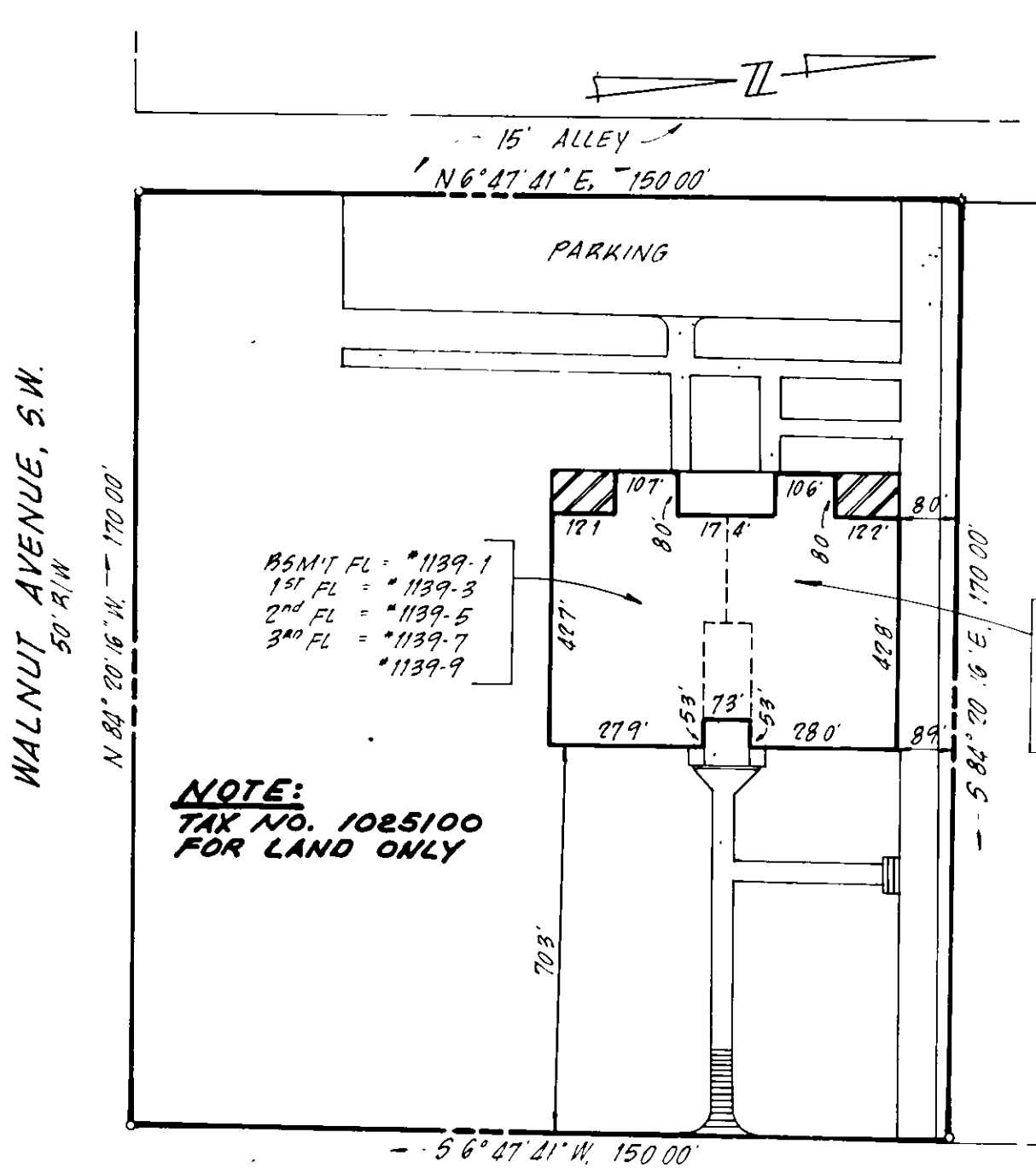
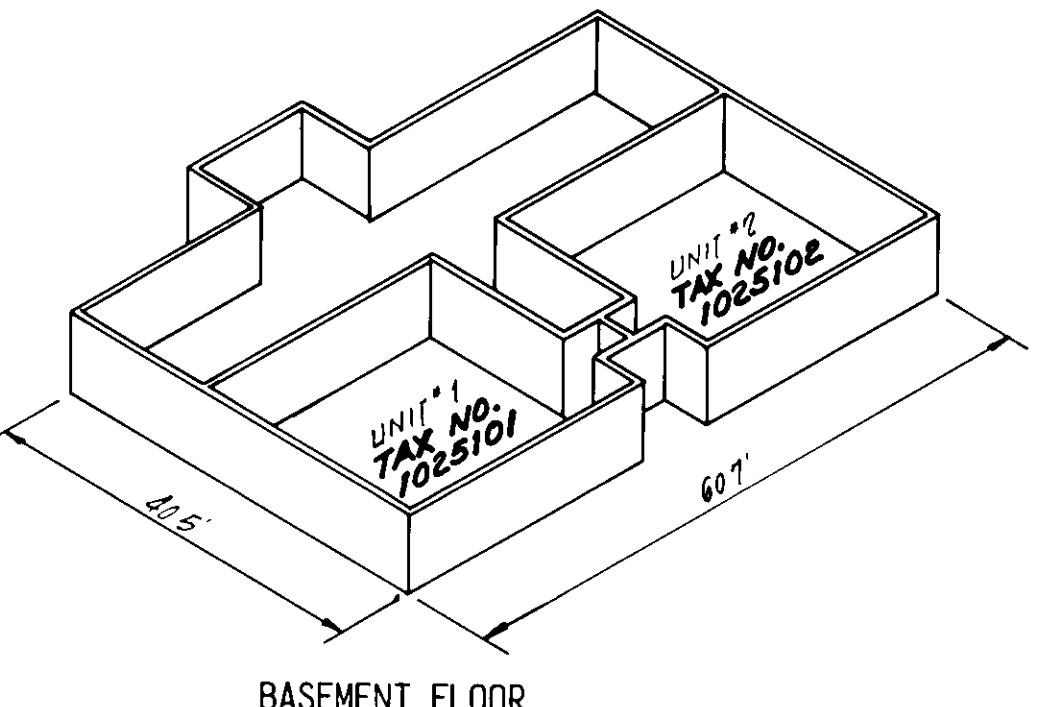
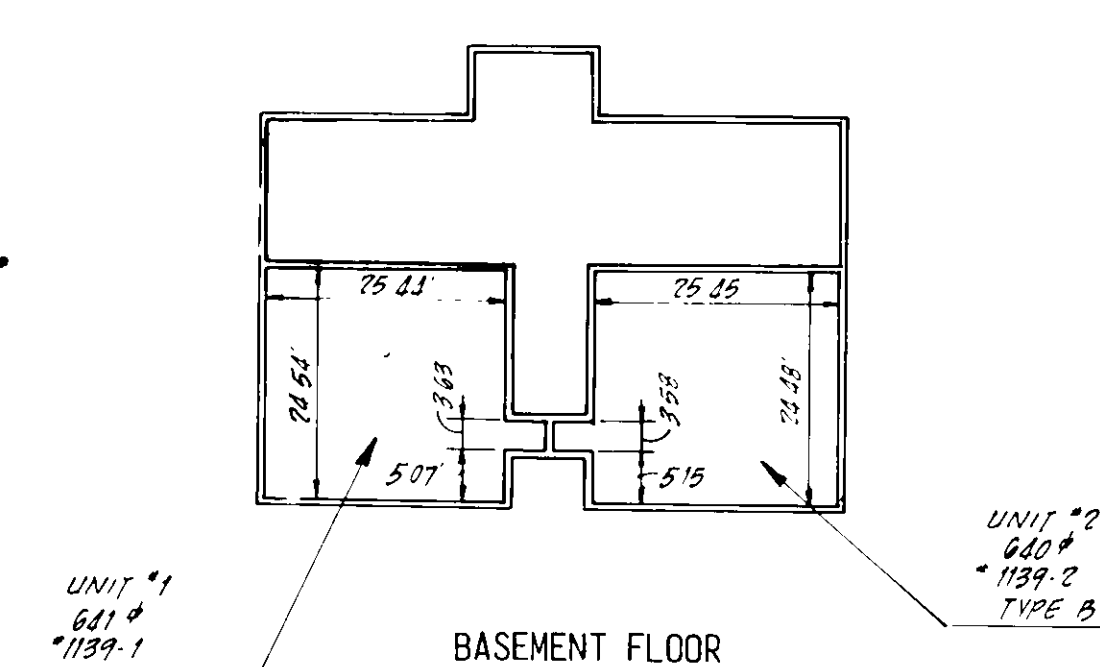
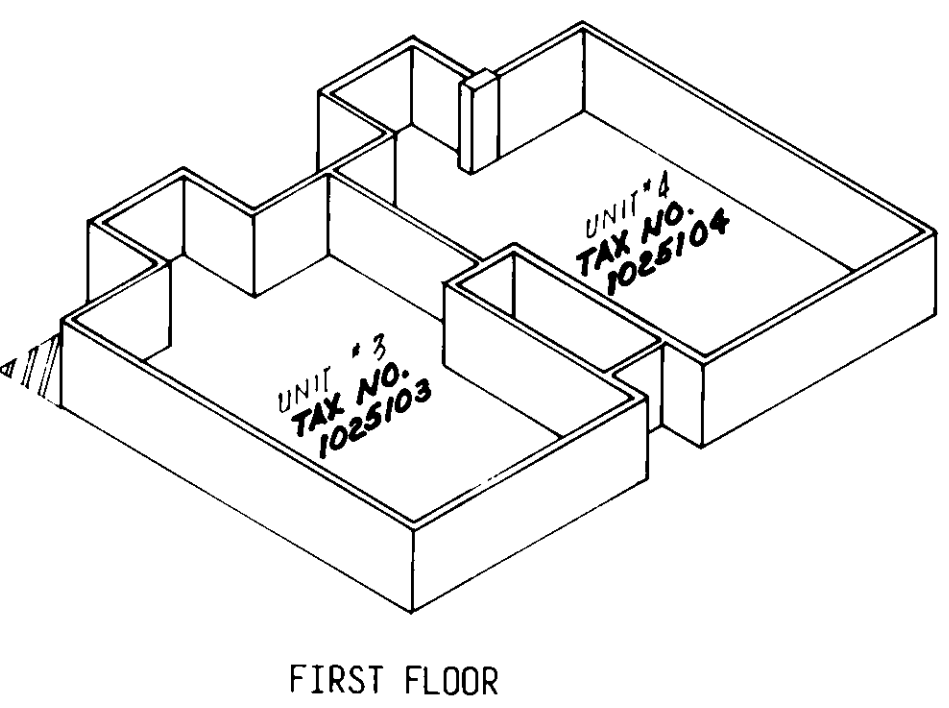
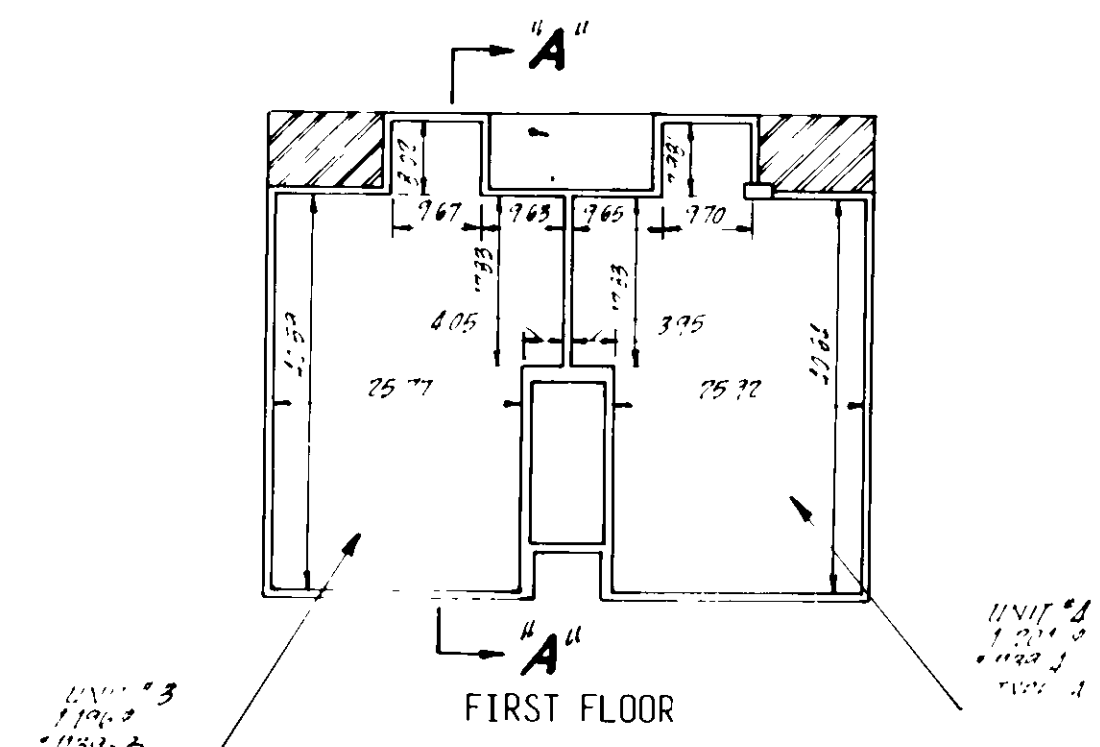
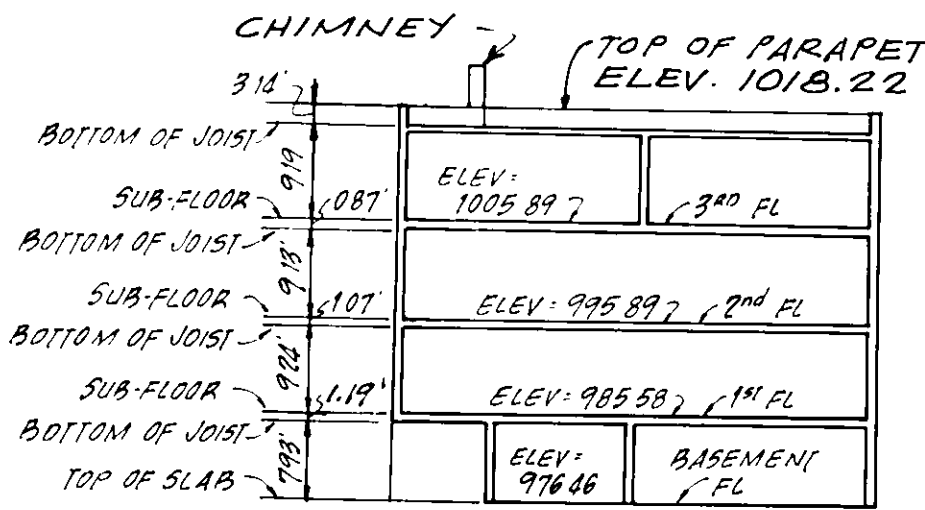
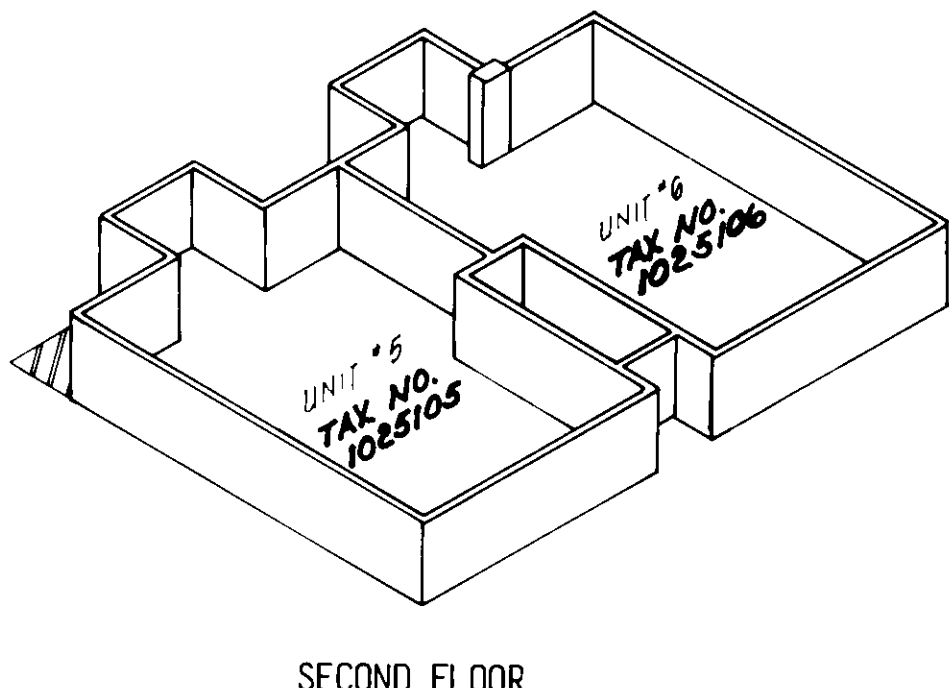
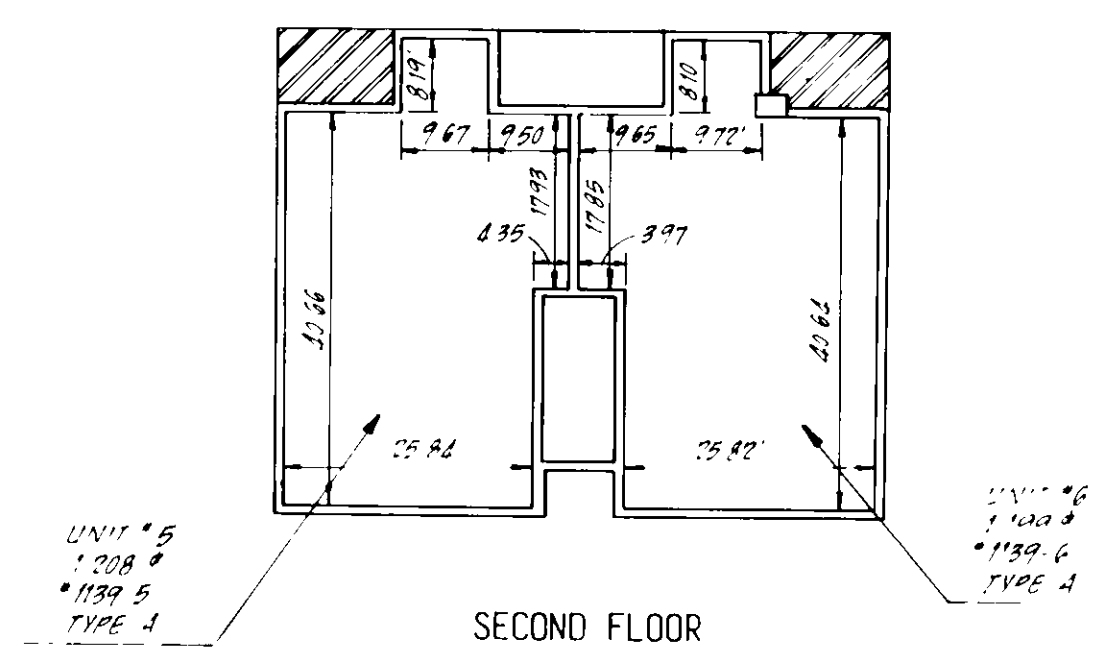
SURVEYOR'S CERTIFICATE

I HEREBY CERTIFY THIS PLAT AND PLAN OF CONDOMINIUM SUBDIVISION CONSISTING OF ONE (1) SHEET, IS CORRECT. THAT IT IS A SUBDIVISION OF LAND AND BUILDINGS ENTITLED "WALKER HOUSE CONDOMINIUMS" AS RECORDED AMONG THE LAND RECORDS OF ROANOKE, VIRGINIA, IN DEED BOOK PAGE AND OF THE IMPROVEMENTS LOCATED THEREON CONSISTING OF ONE (1) BUILDING CONTAINING TEN (10) UNITS AND THAT IT HAS BEEN PREPARED PURSUANT TO AND IN COMPLIANCE WITH THE REQUIREMENTS AND PROVISIONS OF CHAPTER 4.2 IN TITLE 55 OF THE CODE OF VIRGINIA, 1950. AS AMENDED, I. E., THE CONDOMINIUM ACT.

I FURTHER CERTIFY THAT THE LOCATIONS AND DIMENSIONS OF ALL EXISTING IMPROVEMENTS HAVE BEEN CAREFULLY ESTABLISHED BY A TRANSIT TAPE SURVEY AND THAT, UNLESS OTHERWISE SHOWN, THERE ARE NO VISIBLE EXCROACHMENTS. WE FURTHER CERTIFY THAT ALL CONDOMINIUM UNITS, OR PORTIONS THEREOF, DEPICTED ON THIS PLAT AND PLAN OF CONDOMINIUM SUBDIVISION HAVE BEEN SUBSTANTIALLY COMPLETED. THE TOTAL AREA INCLUDED WITHIN THE BOUNDS OF WALKER HOUSE CONDOMINIUMS CONTAINS 25,500 SQ. FT. OF LAND.

BUDORD T. LUMSDEN, L.S.

20 AUG. 1980
DATE



ENGINEER'S CERTIFICATE

I, GUY W. BUFORD, A REGISTERED ENGINEER IN THE COMMONWEALTH OF VIRGINIA, HEREBY CERTIFY THAT THIS LOCATION PLAT, EXHIBIT "A", ACCURATELY SHOWS THE UNITS DELINEATED AND COMPLIES WITH THE PROVISIONS OF SECTION 55.79.58 PARAGRAPH (B) OF THE CONDOMINIUM ACT. I FURTHER CERTIFY THAT ALL UNITS OR PORTIONS THEREOF DEPICTED HEREON HAVE BEEN SUBSTANTIALLY COMPLETED.

GIVEN UNDER MY HAND THIS 20 DAY OF AUGUST, 1980.

GUY W. BUFORD, P.E.

EXHIBIT "A"

"WALKER HOUSE"
CONDOMINIUMS

PROPERTY OF

CAROLINA DEVELOPMENT CORPORATION,
A SOUTH CAROLINA CORPORATION

SITUATED AT THE CORNER OF
WALNUT AVE. & SECOND ST. S.W.
ROANOKE, VIRGINIA

SCALE: AS NOTED DATE: 14 AUG. 1980

BUFORD T. LUMSDEN & ASSOCIATES, P.C.
CERTIFIED LAND SURVEYORS
ROANOKE, VIRGINIA

*80 218-W