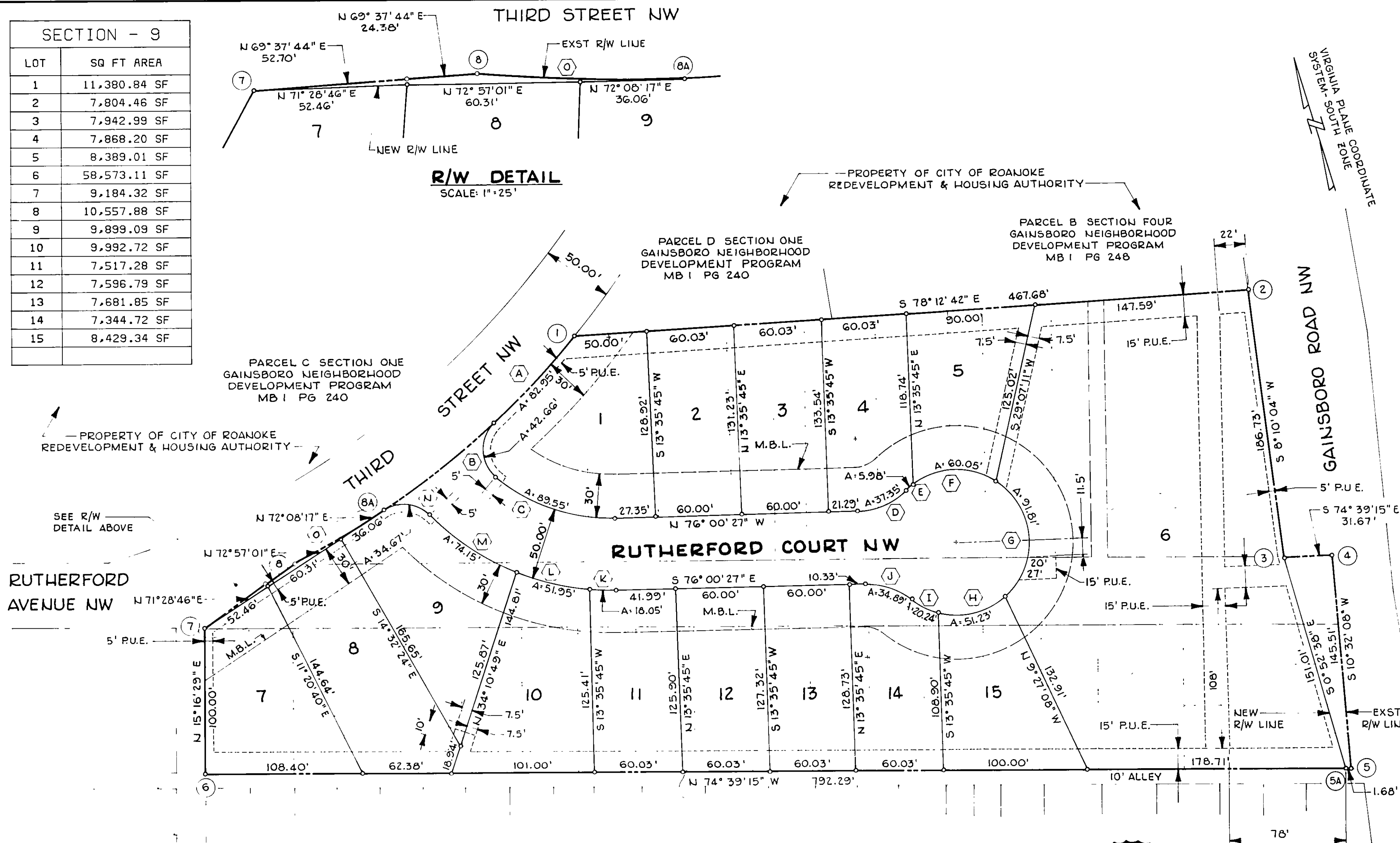


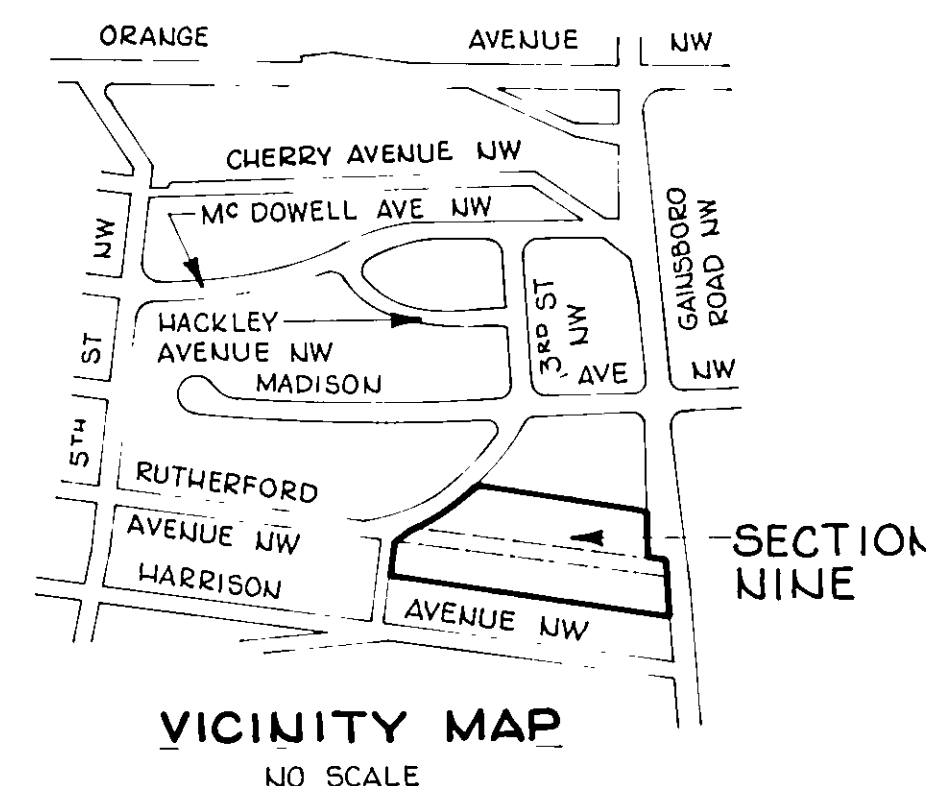
SECTION - 9	
LOT	SQ FT AREA
1	11,380.84 SF
2	7,804.46 SF
3	7,942.99 SF
4	7,868.20 SF
5	8,389.01 SF
6	58,573.11 SF
7	9,184.32 SF
8	10,557.88 SF
9	9,899.09 SF
10	9,992.72 SF
11	7,517.28 SF
12	7,596.79 SF
13	7,681.85 SF
14	7,344.72 SF
15	8,429.34 SF



CURVE DATA						
CURVE	DELTA	RADIUS	TANGENT	ARC	CHORD BEARING	CHORD LENGTH
(A)	7°36'15"	625.00'	41.54'	82.95'	N59°00'20"E	82.88'
(B)	97°46'09"	25.00'	28.64'	42.66'	N13°55'19"E	37.67'
(C)	41°02'42"	125.00'	46.79'	89.55'	N59°00'20"E	87.64'
(D)	42°47'39"	50.00'	19.59'	37.35'	S82°35'44"W	36.48'
(E)	6°51'24"	50.00'	2.99'	5.98'	S64°37'37"W	5.98'
(F)	68°48'42"	50.00'	34.24'	60.05'	N77°32'21"W	56.51'
(G)	105°12'09"	50.00'	65.40'	91.81'	N 9°28'04"W	79.44'
(H)	58°42'36"	50.00'	28.12'	51.23'	S88°34'33"E	49.02'
(I)	23°11'58"	50.00'	10.26'	20.24'	S47°37'17"E	20.11'
(J)	39°59'10"	50.00'	18.19'	34.89'	S56°00'52"E	34.19'
(K)	5°54'34"	175.00'	9.03'	18.05'	S73°03'10"E	18.04'
(L)	17°00'32"	175.00'	26.17'	51.95'	S61°35'37"E	51.76'
(M)	24°16'38"	175.00'	37.64'	74.15'	S40°57'02"E	73.60'
(N)	79°27'25"	25.00'	20.78'	34.67'	S68°32'26"E	31.96'
(O)	6°35'34"	625.00'	36.00'	71.92'	N75°01'49"E	71.88'

BOUNDARY CLOSURE					
PT. NO.	BEARING	DISTANCE	LATITUDES	DEPARTURES	
			NORTH	SOUTH	EAST WEST
1-2	S78°12'42"E	467.68'		95.545'	457.816'
2-3	S 8°10'04"W	186.73'		184.836'	26.529'
3-4	S74°39'15"E	31.67'		8.381'	30.541'
4-5	S10°32'08"W	145.51'		143.057'	26.606'
5-6	N74°39'15"W	792.29'	209.675'		764.042'
6-7	N15°16'29"E	100.00'	96.467'		26.345'
7-8	N69°37'44"E	77.08'	26.832'		72.259'
8-1	N66°45'52"E	250.54'	98.841'		230.219'
TOTALS		2051.50'	431.815'	431.819'	817.180' 817.177'

- THE PROPERTY WITHIN SECTION NINE WAS ACQUIRED BY THE CITY OF ROANOKE REDEVELOPMENT AND HOUSING AUTHORITY BY VARIOUS INSTRUMENTS OF RECORD IN THE OFFICE OF THE CLERK OF THE CIRCUIT COURT FOR THE CITY OF ROANOKE, VA.
- IN ADDITION TO RUTHERFORD COURT, THE AREAS BOUNDED BY OUTSIDE CORNERS NUMBERED 3, 4, 5 AND 5A AND THE OUTSIDE CORNERS NUMBERED 7, 8, AND 8A ARE HEREBY DEDICATED TO THE CITY OF ROANOKE, VA FOR STREET PURPOSES.
- THE STREETS AND ALLEYS INDICATED BY BROKEN LINES WERE VACATED BY THE FOLLOWING ORDINANCES ADOPTED BY THE CITY COUNCIL AND RECORDED IN THE OFFICE OF THE CLERK OF THE CIRCUIT COURT OF THE CITY OF ROANOKE, VIRGINIA.  
ORDINANCE NO. 24124 ADOPTED MAY 22, 1978 RECORDED IN DB 1427 PG 460  
ORDINANCE NO. 25507 ADOPTED MARCH 9, 1981 RECORDED IN DB 1467 PG 127



KNOW ALL MEN BY THESE PRESENTS, TO WIT: THE UNDERSIGNED OWNER HEREBY CERTIFIES THAT THE SUBDIVISION OF LAND AS APPEARS ON THIS PLAT IS WITH THE FREE CONSENT AND IN ACCORDANCE WITH THE DESIRE OF SAID OWNER AND IS PURSUANT TO AND IN COMPLIANCE WITH THE PROVISIONS OF TITLE 15.1 OF THE 1950 CODE OF VIRGINIA, AS AMENDED, AND THE SUBDIVISION ORDINANCE OF THE CITY OF ROANOKE, VIRGINIA, AS AMENDED. THE SAID OWNER HEREBY DEDICATES TO THE CITY OF ROANOKE, VIRGINIA IN FEE SIMPLE, SUCH PORTIONS OF THE PREMISES PLATTED AS ARE ON THIS PLAT SET APART FOR STREETS, AND DEDICATES TO THE SAID CITY OF ROANOKE, VIRGINIA ALL PUBLIC EASEMENTS INDICATED ON SAID PLAT. IN WITNESS WHEREOF ARE HEREBY PLACED THE FOLLOWING SIGNATURE AND SEAL ON February 17, 1982

CITY OF ROANOKE REDEVELOPMENT AND HOUSING AUTHORITY  
BY Robert D. McNeill EXECUTIVE DIRECTOR

STATE OF VIRGINIA } TO WIT:  
CITY OF ROANOKE }

I, Robert D. McNeill, A NOTARY PUBLIC IN AND FOR THE AFORESAID CITY AND STATE DO HEREBY CERTIFY THAT Herbert D. McNeill WHOSE NAME AS SUCH IS SIGNED TO THE FOREGOING WRITING DATED February 22, 1982, HAS PERSONALLY APPEARED BEFORE ME IN MY AFORESAID CITY AND ACKNOWLEDGED THE SAME February 22, 1982

MY COMMISSION EXPIRES February 22, 1985

NOTARY PUBLIC

APPROVED:

AGENT, CITY OF ROANOKE PLANNING COMMISSION DATE

CITY ENGINEER, CITY OF ROANOKE DATE

IN THE CLERKS OFFICE OF THE CIRCUIT COURT OF THE CITY OF ROANOKE, VIRGINIA, THIS INSTRUMENT WITH THE CERTIFICATE OF ACKNOWLEDGEMENT THERETO ANNEXED, IS ADMITTED TO RECORD ON

TESTE: BY

# LEGEND

- BOUNDARY LINE OF SECTION NINE
- - - EASEMENT LINE
- FORMER STREETS AND ALLEYS
- M.B.L. MINIMUM BUILDING SETBACK LINE
- P.U.E. PUBLIC UTILITY EASEMENT

THIS MAP REVISES MAP OF SECTION NINE GAINSBORO COMMUNITY DEVELOPMENT PROGRAM RECORDED IN MAP BOOK 1 AT PAGE 296

REVISED  
MAP OF SECTION NINE  
GAINSBORO COMMUNITY  
DEVELOPMENT PROGRAM  
CITY OF ROANOKE REDEVELOPMENT  
AND HOUSING AUTHORITY  
ROANOKE, VIRGINIA

HAYES, SEAY, MATTERN AND MATTERN  
ARCHITECTS, ENGINEERS, PLANNERS  
ROANOKE, VIRGINIA

DRAWN: JWB  
CHECKED: HCT  
APPROVED: WMZ

SCALE: 1"=50'  
DATE: FEBRUARY 17, 1982  
COMM. NO.: 3756 JB  
SHEET 1 OF 1