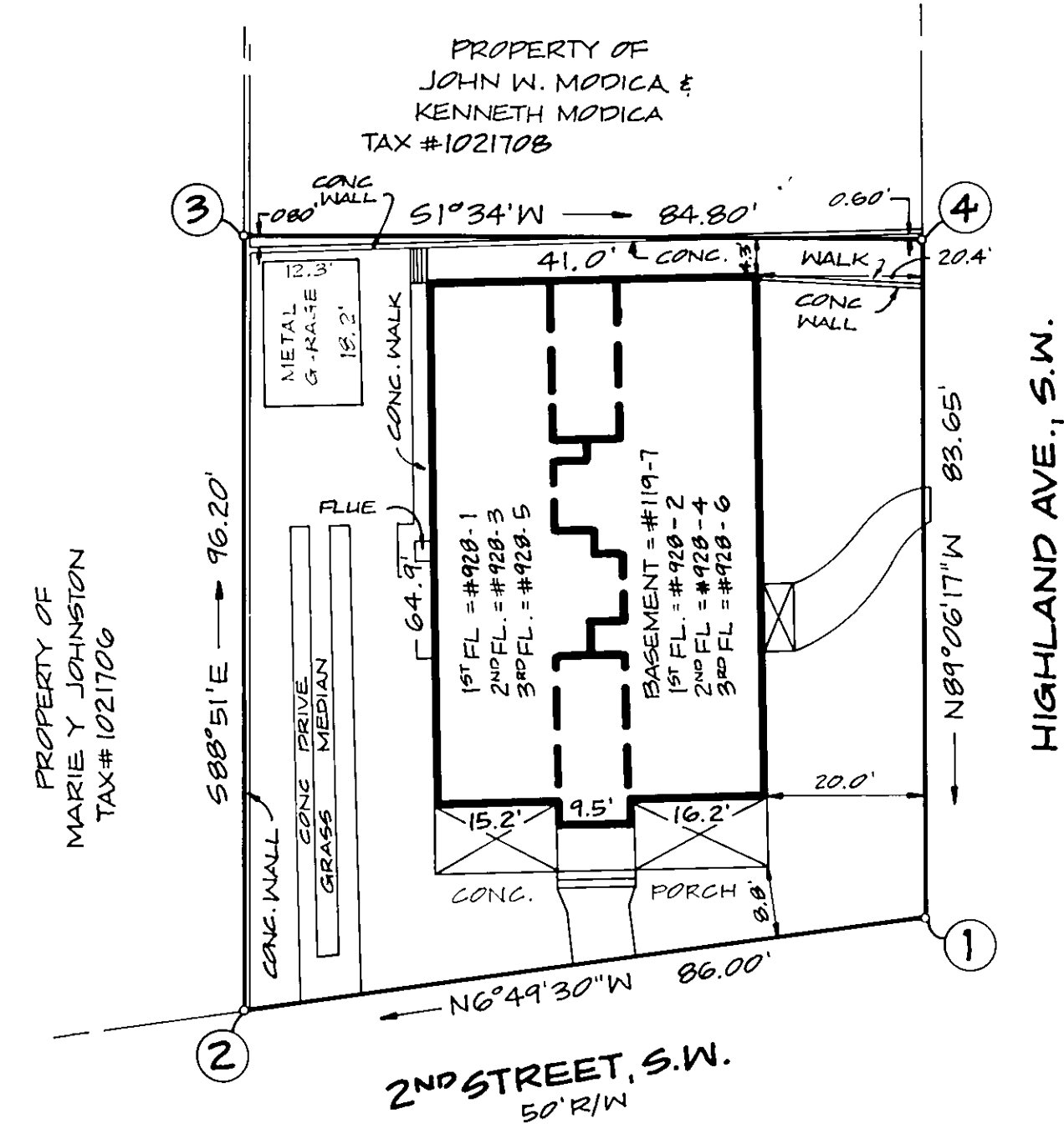
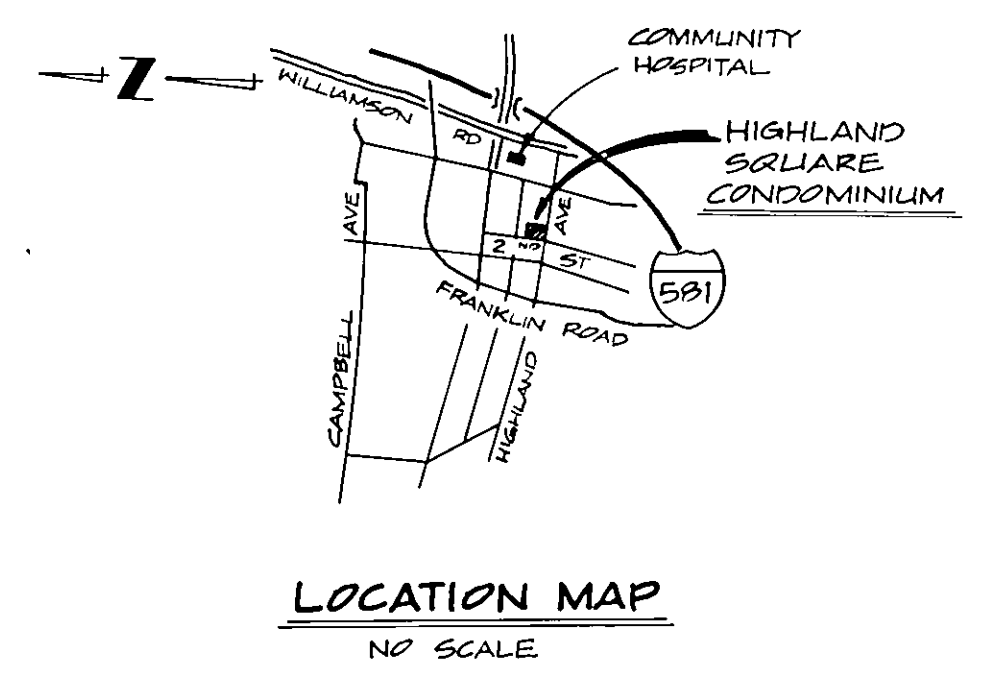


SECTION "A-A"



SITE PLAN  
SCALE: 1" = 20'

NOTE:  
INCLUDED AS A PART OF EACH UNIT IS THE WALL COVERING ENCLOSING SUCH UNIT. ALL INTERIOR DIMENSIONS SHOWN ON THIS PLAN ARE CALCULATED FROM FACE TO FACE OF STUDS.



**SURVEYOR'S CERTIFICATE**

"I HEREBY CERTIFY THIS PLAT AND PLAN OF CONDOMINIUM SUBDIVISION CONSISTING OF ONE (1) SHEET, IS CORRECT: THAT IT IS A SUBDIVISION OF LAND AND BUILDING ENTITLED "HIGHLAND SQUARE CONDOMINIUM" AS RECORDED AMONG THE LAND RECORDS OF THE CITY OF ROANOKE, VIRGINIA, IN DEED BOOK 1487 PAGE 1503 AND OF THE IMPROVEMENTS LOCATED THEREON CONSISTING OF ONE (1) BUILDING CONTAINING SEVEN (7) UNITS AND THAT IT HAS BEEN PREPARED PURSUANT TO AND IN COMPLIANCE WITH THE REQUIREMENTS AND PROVISIONS OF CHAPTER 4.2 IN TITLE 55 OF THE CODE OF VIRGINIA 1950, AS AMENDED, I. E., THE CONDOMINIUM ACT."

I FURTHER CERTIFY THAT THE LOCATIONS AND DIMENSIONS OF ALL EXISTING IMPROVEMENTS HAVE BEEN CAREFULLY ESTABLISHED BY A TRANSIT TAPE SURVEY AND THAT UNLESS OTHERWISE SHOWN, THERE ARE NO VISIBLE ENCROACHMENTS. WE FURTHER CERTIFY THAT ALL CONDOMINIUM UNITS, OR PORTIONS THEREOF, DEPICTED ON THIS PLAT AND PLAN OF CONDOMINIUM SUBDIVISION HAVE BEEN SUBSTANTIALLY COMPLETED.

THE TOTAL AREA INCLUDED WITHIN THE BOUNDS OF "HIGHLAND SQUARE CONDOMINIUM" CONTAINS 7643 SQUARE FEET (0.175 AC.).

BUFORD T. LUMSDEN, L. S. DATE

**ENGINEER'S CERTIFICATE**

I, GUY W. BUFORD, A REGISTERED ENGINEER IN THE COMMONWEALTH OF VIRGINIA, HEREBY CERTIFY THAT THIS PLAT AND PLAN EXHIBIT "A", ACCURATELY SHOWS THE UNITS DELINEATED AND COMPLIES WITH THE PROVISIONS OF SECTION 55-79.58 PARAGRAPH (B) OF THE CONDOMINIUM ACT. I FURTHER CERTIFY THAT ALL UNITS OR PORTIONS THEREOF DEPICTED HEREON HAVE BEEN SUBSTANTIALLY COMPLETED. GIVEN UNDER MY HAND THIS DAY OF 1982.

GUY W. BUFORD, P. E.

IN THE CLERK'S OFFICE OF THE CIRCUIT COURT OF THE CITY OF ROANOKE, VIRGINIA, THIS INSTRUMENT WITH THE CERTIFICATE OF ACKNOWLEDGEMENT THEREON ANNEXED IS ADMITTED TO RECORD ON 1982, AT 2:42 O'CLOCK P. M.

TESTEE: PATSY TESTERMAN, CLERK BY: DEPUTY CLERK

EXHIBIT "A"  
**HIGHLAND SQUARE CONDOMINIUM**  
PROPERTY OF:  
**JAMES E. BODY**  
SITUATED AT THE CORNER OF  
SECOND STREET S.W. AND HIGHLAND AVE., S.W.  
ROANOKE, VIRGINIA  
SCALE: 1" = 20' DATE: 7 AUGUST 1982

BUFORD T. LUMSDEN & ASSOCIATES, P.C.  
CERTIFIED LAND SURVEYORS  
ROANOKE, VIRGINIA