

KNOW ALL MEN BY THESE PRESENTS TO WIT:

THE OWNERS HEREBY CERTIFY THAT THEY HAVE SUBDIVIDED THE LAND SHOWN HEREON ENTIRELY WITH THEIR FREE WILL AND ACCORD AS REQUIRED BY SECTION 15.1-465 THRU 15.1-485 OF THE CODE OF VIRGINIA AS AMENDED TO DATE.

Donald W. Huffman Pres.
DONALD W. HUFFMAN, PRESIDENT
BLUEFIELD HOLDING COMPANY

July 1, 1983
DATE

Donald W. Huffman, Trustee
DONALD W. HUFFMAN, TRUSTEE
TRUSTEE IN BANKRUPTCY
FOR BILLY H. HARBOUR

July 1, 1983
DATE

STATE OF VIRGINIA

TOWIT:

I, Betty L. Lowe, A NOTARY PUBLIC IN AND FOR THE AFORESAID STATE DO HEREBY CERTIFY THAT DONALD W. HUFFMAN, WHOSE NAME IS SIGNED TO THE FOREGOING WRITING DATED July 1, 1983 HAS PERSONALLY APPEARED BEFORE ME IN MY JURISDICTION AND ACKNOWLEDGED THE SAME ON THIS 1st DAY OF July, 1983.

MY COMMISSION EXPIRES
October 7, 1986

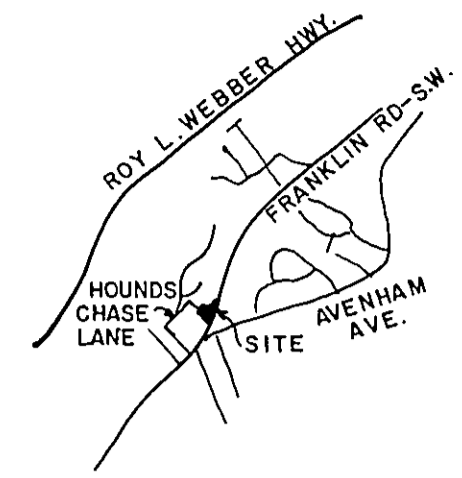
Betty L. Lowe
NOTARY PUBLIC

LEGEND

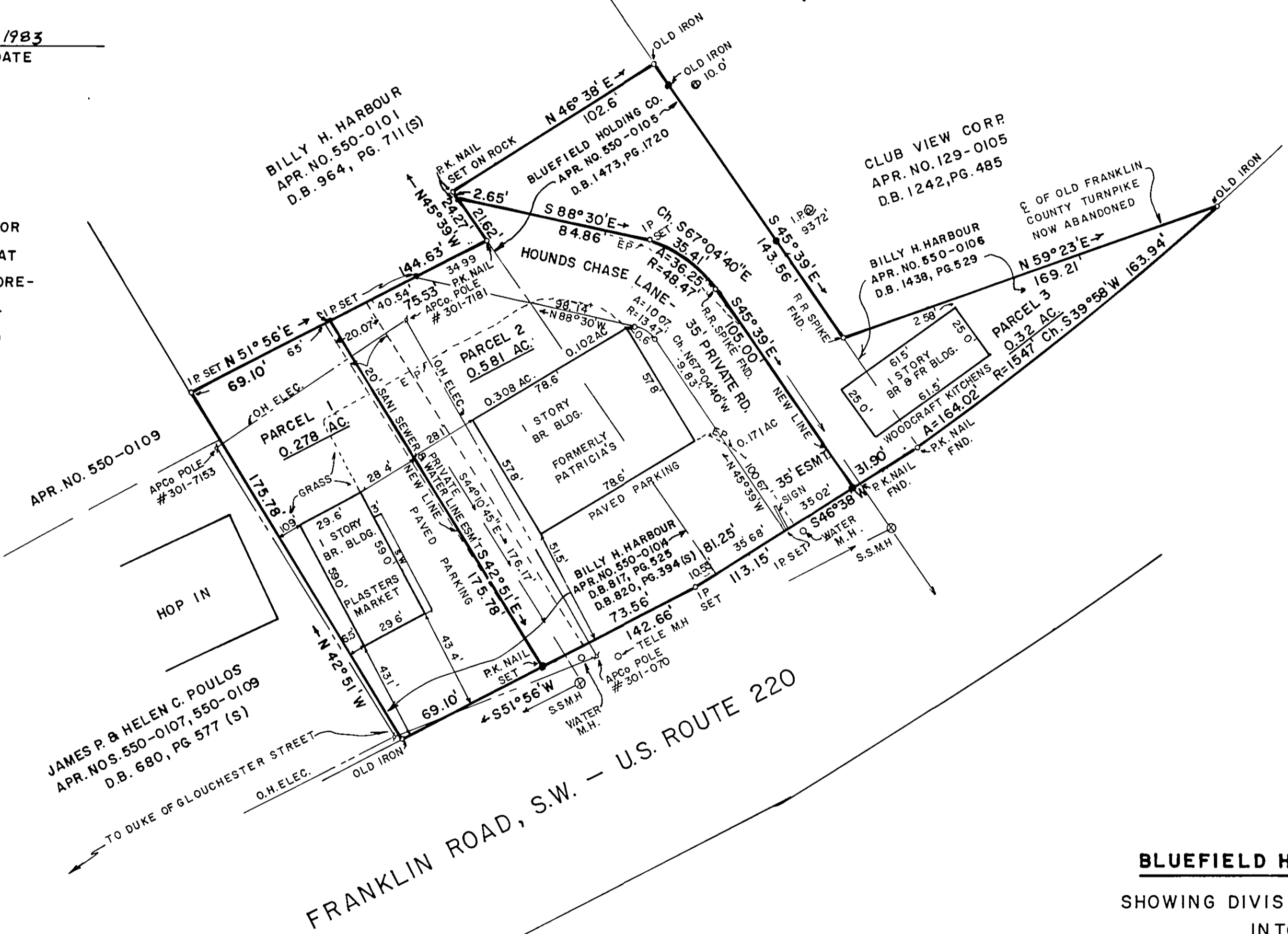
- TELE. M.H. TELEPHONE MANHOLE
I.P. IRON PIN
S.S.M.H. SANITARY SEWER MANHOLE
E.P. EDGE PAVEMENT
O.H. OVER HEAD
S.W. SIDE WALK

LEGAL REFERENCES

- BILLY H. HARBOUR
D.B. 1438, PG. 529
BLUEFIELD HOLDING CO.
D.B. 1473, PG. 1720
BILLY H. HARBOUR
D.B. 817, PG. 525
D.B. 820, PG. 394



LOCATION MAP

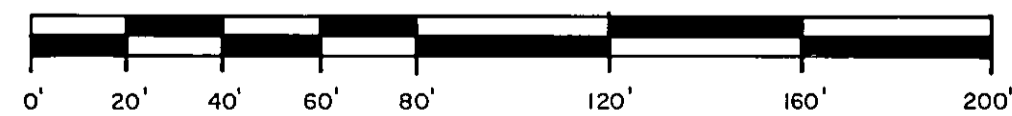


IN THE CLERK'S OFFICE FOR THE CIRCUIT COURT OF ROANOKE, VIRGINIA THIS MAP WAS PRESENTED AND WITH THE CERTIFICATE OF ACKNOWLEDGEMENT THERETO ANNEXED ADMITTED TO RECORD AT 9:25 O'CLOCK A.M. ON THIS 22nd DAY OF July, 1983.

TESTE: Betty L. Lowe, Clerk
By: Surgeon General, Roanoke
CLERK

APPROVED:

- Paul B. Bennett, Jr. 7-18-83
AGENT FOR ROANOKE CITY PLANN. COMM. DATE
Richard B. Bina 19 July '83
CITY ENGINEER, CITY OF ROANOKE DATE
Thomas A. Brady 7-20-83
DIRECTOR OF PUBLIC WORKS DATE
Carl G. Halls 7-21-83
FIRE CHIEF DATE



NOTE: THIS PLAT IS A RESUBDIVISION OF A PORTION OF THAT PROPERTY SHOWN ON THAT CERTAIN PLAT MADE BY BUFORD T. LUMSDEN & ASSOCIATES, P.C., C.L.S., DATED DEC. 30, 1982 RECORDED IN THE CLERK'S OFFICE OF THE CIRCUIT COURT OF THE CITY OF ROANOKE, VIRGINIA IN D.B. 1483, PG. 1519. THE 35' ROAD RIGHT-OF-WAY SHOWN HEREON ENCOMPASSES THE 25' ROADWAY SHOWN ON THE AFOREMENTIONED PLAT RECORDED IN D.B. 1483, PG. 1519.

MAP FOR
BLUEFIELD HOLDING CO. & BILLY H. HARBOUR

SHOWING DIVISION OF APR. NOS. 550-0104, 0105 & 0106
INTO NEW PARCELS 1, 2 & 3
SITUATE FRANKLIN ROAD, S.W.
ROANOKE, VIRGINIA

SCALE: 1" = 40'

JUNE 3, 1983



BY: T. P. PARKER & SON
ENGINEERS & SURVEYORS, LTD.
SALEM, VIRGINIA

W.O. 6551
NB WW-3
RM-35