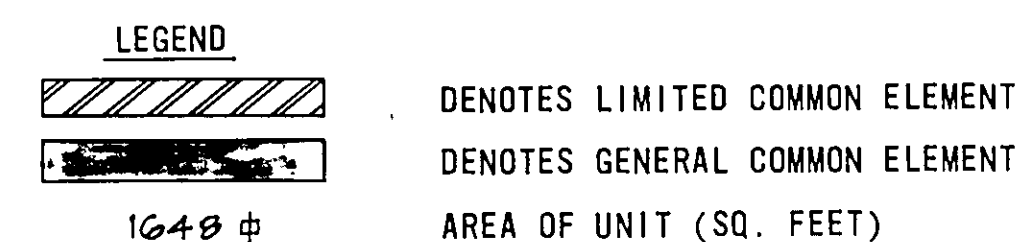
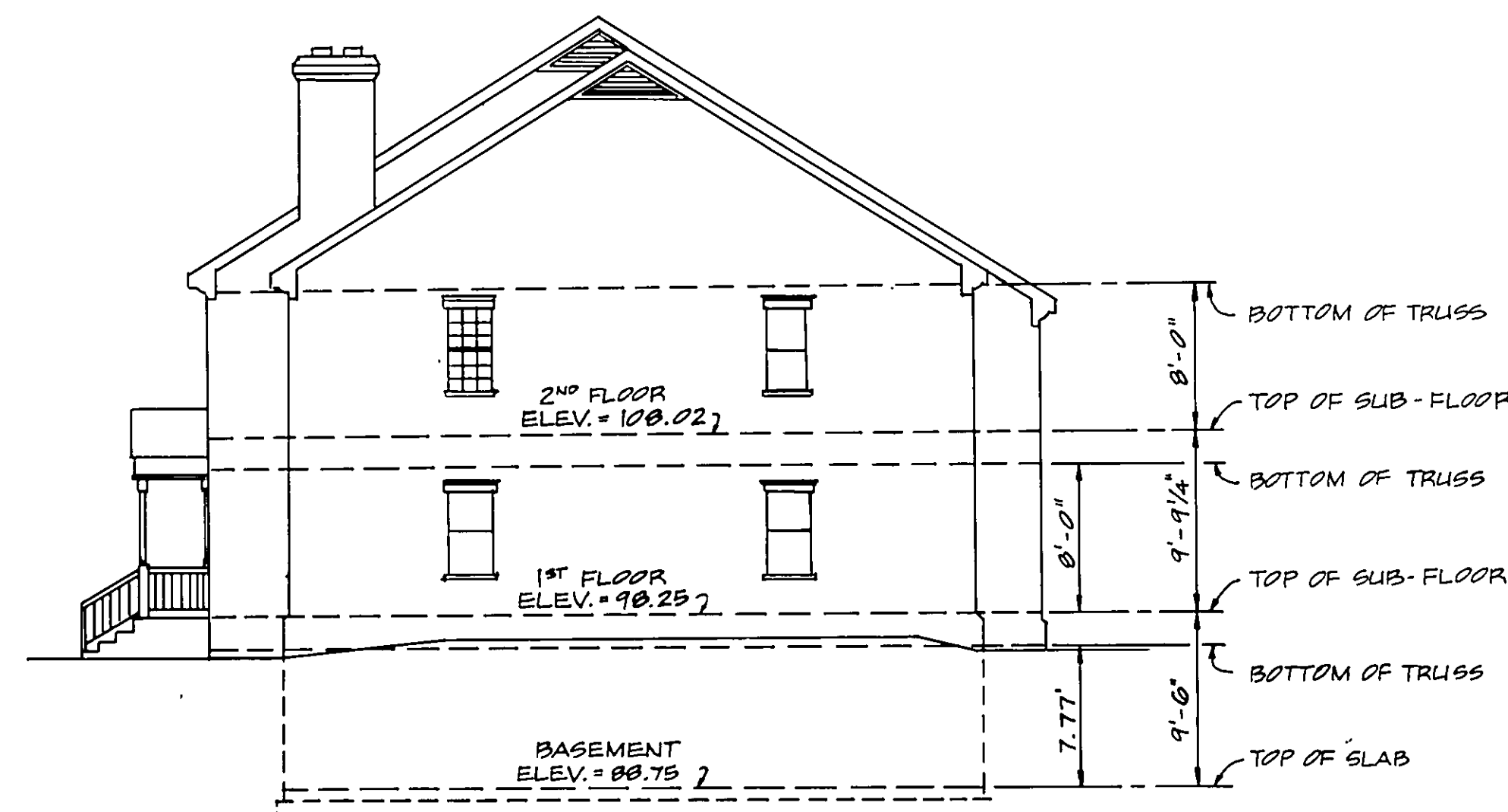


PLAN VIEWS
SCALE: 1" = 10'



- NOTES:
1. INCLUDED AS PART OF EACH UNIT IS THE DRY WALL COVERING ENCLOSING SUCH UNIT. ALL INTERIOR DIMENSIONS SHOWN ON THIS PLAN ARE MEASURED TO THE INSIDE FACE OF STUDS OR TO THE INSIDE FACE OF CONCRETE FOUNDATION WALLS.
 2. VERTICAL DATUM IS BASED ON AN ASSUMED ELEVATION OF 100.00 TOP OF FIRE HYDRANT AT N.E. CORNER OF INTERSECTION OF CRYSTAL SPRINGS AVE., S.W. AND 25TH ST., S.W.
 3. UNIT DIMENSIONS SHOWN ARE TYPICAL AND ARE BASED UPON THE MEDIAN OF FIELD MEASUREMENTS OF ALL UNITS. SUBSTANTIALLY ALL DIMENSIONS FALL WITHIN A TOLERANCE OF .06 FEET OF THOSE SHOWN.
 4. UNIT FLOOR AREAS ARE BASED ON THE BUILDING PLANS AND ARE WITHIN 1.2 PERCENT OF THE ACTUAL FLOOR AREAS.

ENGINEER'S CERTIFICATE

I, GUY W. BUFORD, A REGISTERED ENGINEER IN THE COMMONWEALTH OF VIRGINIA, HEREBY CERTIFY THAT THIS PLAN, EXHIBIT "A", ACCURATELY SHOWS THE UNITS DELINEATED AND COMPLIES WITH THE PROVISIONS OF SECTION 55-79.58 PARAGRAPH (b) OF THE CONDOMINIUM ACT. I FURTHER CERTIFY THAT UNLESS NOTED OTHERWISE ALL UNITS DEPICTED HEREON HAVE BEEN SUBSTANTIALLY COMPLETED.

GIVEN UNDER MY HAND THIS 6TH DAY OF JAN, 1984.

GUY W. BUFORD, P. E.

EXHIBIT "A" SPRINGSIDE CONDOMINIUM

BEING LOTS 11 & 12, BLOCK 46
CRYSTAL SPRING SUBDIVISION

SITUATED AT THE INTERSECTION OF
CRYSTAL SPRING AVENUE & 25TH STREET, S.W.
ROANOKE, VIRGINIA

SCALE: AS SHOWN DATE: 1 NOV. 1983

BUFORD T. LUMSDEN & ASSOCIATES, P.C.
ENGINEERS - SURVEYORS
ROANOKE, VIRGINIA

COMM. # 83-154

SHEET # 2 OF 2