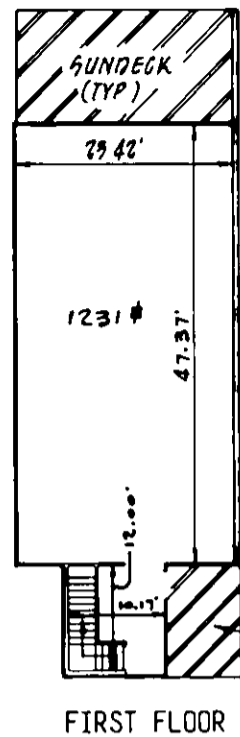


TYPE "D"
2454 # (TOTAL)

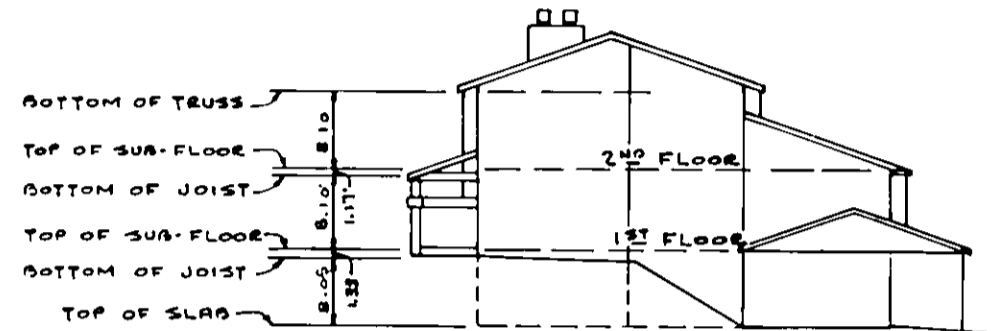
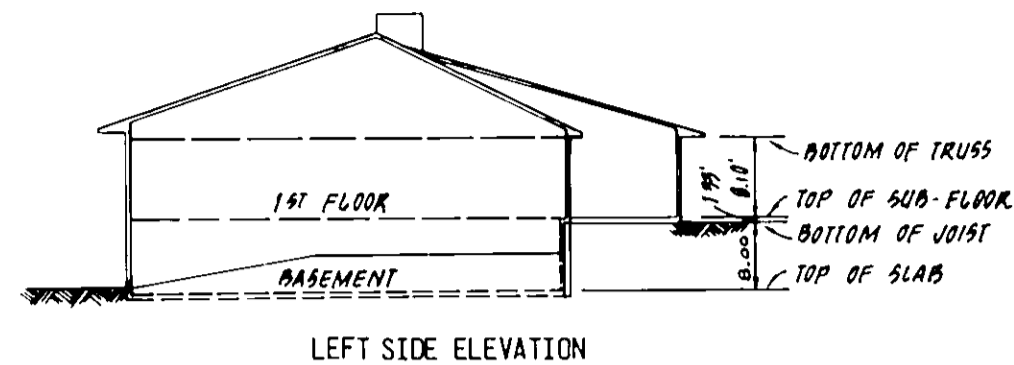


FIRST FLOOR

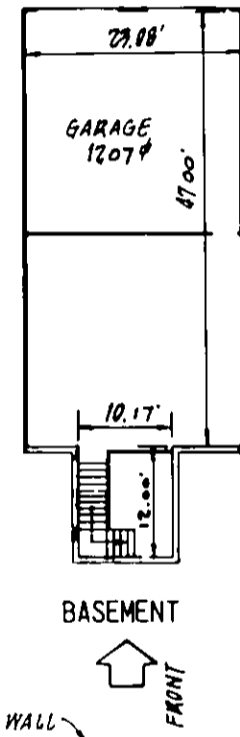
TYPE "D" UNITS NUMBERS
BUILDING 4
UNIT #215
UNIT #216
UNIT #217

NOTE: UNIT #215 OPPOSITE HAND.

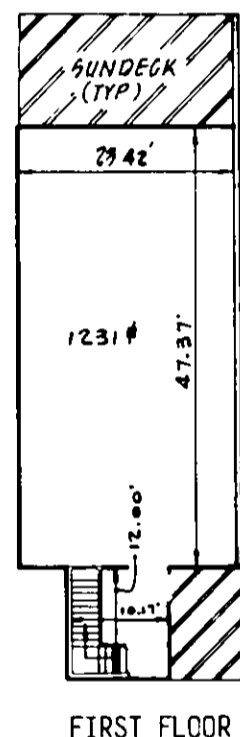
FIRST FLOOR ELEVATIONS (SUB FLOOR)	
BLDG. NO.	ELEVATION
4	1130.28



BUILDING #
RIGHT SIDE ELEVATION



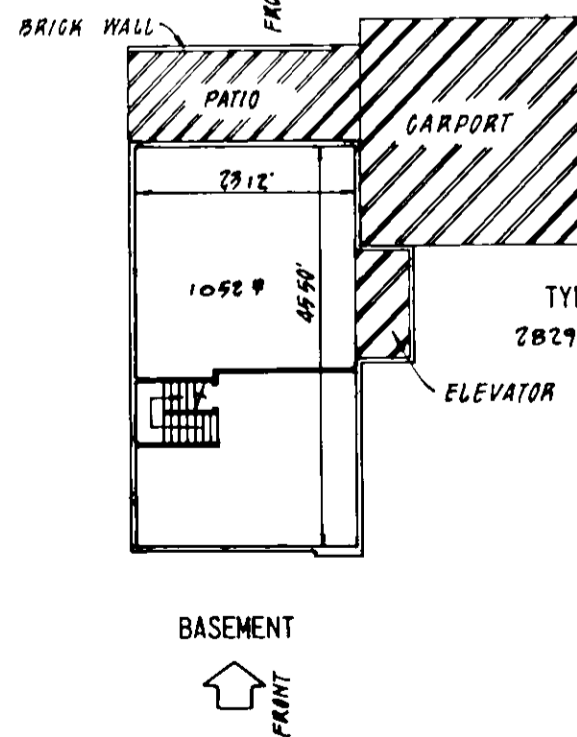
TYPE "D-1"
2438 # (TOTAL)



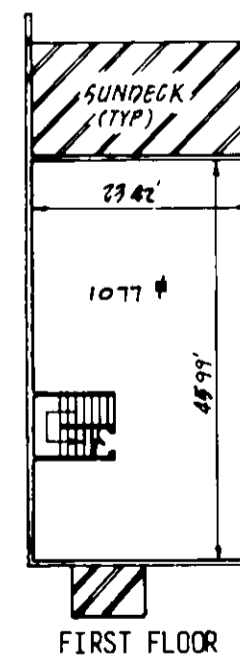
FIRST FLOOR

TYPE "D-1" UNITS NUMBERS
BUILDING 4
UNIT #218

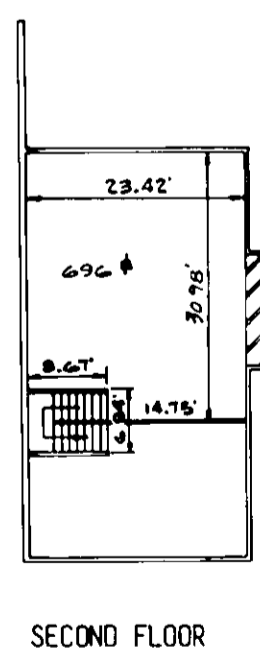
LEGEND	
VERTICAL DATUM	U.S.G.S. MEAN SEA LEVEL
	DENOTES LIMITED COMMON ELEMENT
	DENOTES GENERAL COMMON ELEMENT
1087 #	AREA OF UNIT (SQ. FT.)
	ORIENTATION FOR PLAN VIEW



TYPE "C-1"
2129 # (TOTAL)



FIRST FLOOR



SECOND FLOOR

TYPE "C-1" UNIT NUMBERS
BUILDING #4
UNIT #214

ENGINEER'S CERTIFICATE
I, GUY W. BUFORD, A REGISTERED ENGINEER IN THE COMMONWEALTH OF VIRGINIA, HEREBY CERTIFY THAT THIS PLAN, EXHIBIT "A", ACCURATELY SHOWS THE UNITS DELINEATED AND COMPLIES WITH THE PROVISIONS OF SECTION 55-79.58 PARAGRAPH (b) OF THE CONDOMINIUM ACT. I FURTHER CERTIFY THAT UNLESS NOTED OTHERWISE ALL UNITS DEPICTED HEREON HAVE BEEN SUBSTANTIALLY COMPLETED.
GIVEN UNDER MY HAND THIS 6TH DAY OF SEPT., 1985.

Guy W. Buford
GUY W. BUFORD, P. E.

- NOTES:
1. INCLUDED AS PART OF EACH UNIT IS THE DRY WALL COVERING ENCLOSING SUCH UNIT. ALL INTERIOR DIMENSIONS SHOWN ON THIS PLAN ARE MEASURED TO THE INSIDE FACE OF STUDS OR TO THE INSIDE FACE OF CONCRETE FOUNDATION WALLS.
 2. ALL VERTICAL DIMENSIONS ARE MEASURED FROM SUBFLOOR TO BOTTOM OF JOISTS.
 3. UNIT DIMENSIONS SHOWN ARE TYPICAL AND ARE BASED UPON THE MEDIAN OF FIELD MEASUREMENTS OF ALL UNITS. SUBSTANTIALLY ALL DIMENSIONS FALL WITHIN A TOLERANCE OF $\pm .08$ FEET OF THOSE SHOWN.
 4. UNIT FLOOR AREAS ARE BASED ON THE BUILDING PLANS AND ARE WITHIN ONE PERCENT OF THE ACTUAL FLOOR AREAS.



EXHIBIT "A"
REVISED
PHASE II
WINDWARD CONDOMINIUM

SITUATED AT THE INTERSECTION OF
OGDEN ROAD & WINDING WAY ROAD, S.W.
ROANOKE, VIRGINIA

SCALE: 1" = 16' DATE: 15 SEPT. 1985

BUFORD T. LUMSDEN & ASSOCIATES, P.C.
ENGINEERS - SURVEYORS
ROANOKE, VIRGINIA

*88-746

SHEET # 2 OF 2