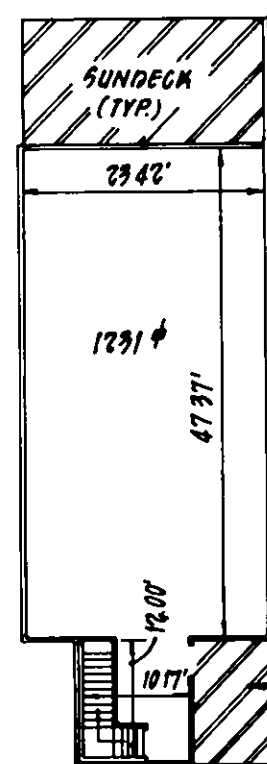


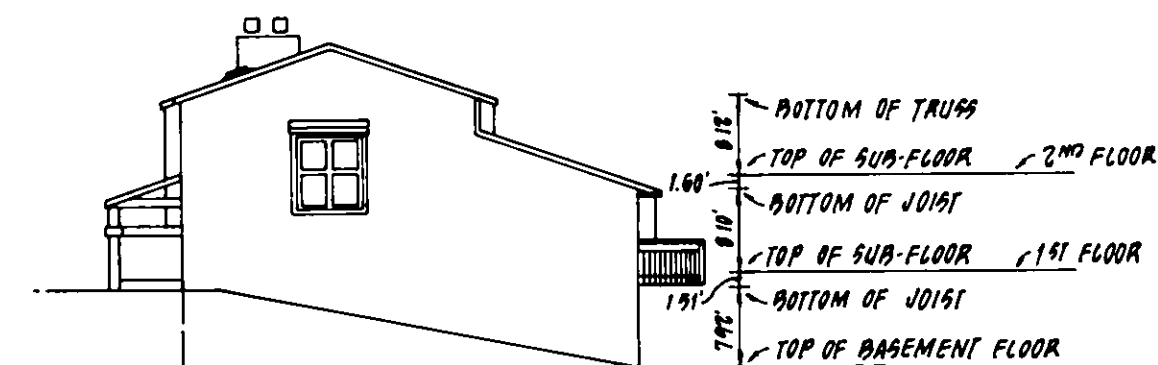
UNITS
207 & 208
2454 # (TOTAL)



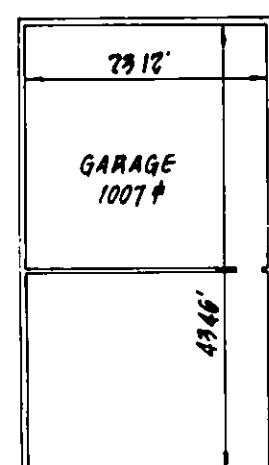
FIRST FLOOR

TYPE "D" UNITS NUMBERS	
BUILDING #6	
UNIT #207	1400507
UNIT #208	1400508

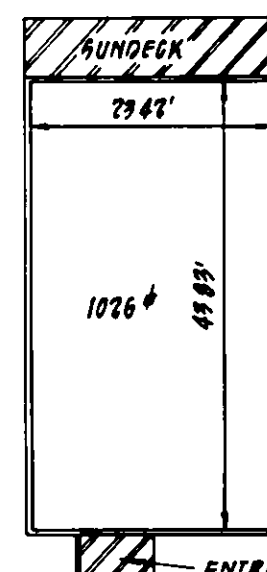
FIRST FLOOR ELEVATIONS (SUB FLOOR)	
BLDG. NO.	ELEVATION
6	1136.46



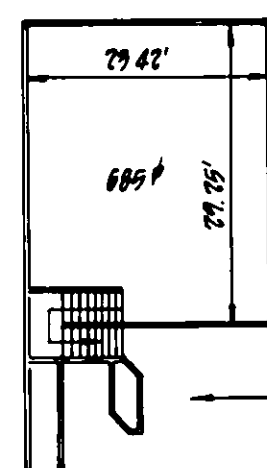
BUILDING #6
RIGHT SIDE ELEVATION



UNIT #209
2718 # (TOTAL)



FIRST FLOOR



SECOND FLOOR

TYPE "C-2" UNITS NUMBER	
BUILDING #6	
UNIT #209	1400509

LEGEND

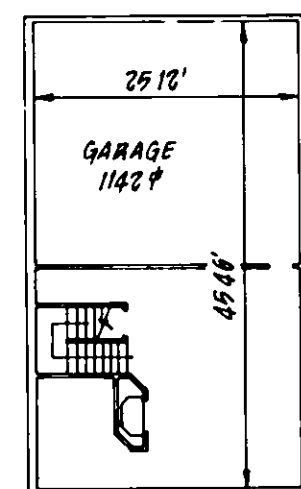
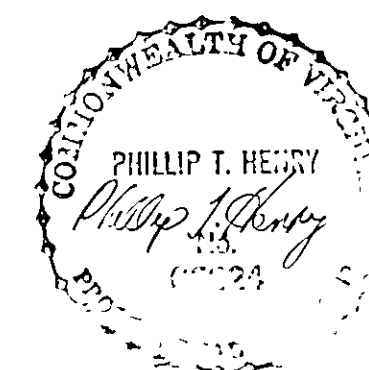
VERTICAL DATUM	U.S.G.S. MEAN SEA LEVEL
	DENOTES LIMITED COMMON ELEMENT
	DENOTES GENERAL COMMON ELEMENT
2454 #	AREA OF UNIT (SQ. FT.)
	ORIENTATION FOR PLAN VIEW

ENGINEER'S CERTIFICATE

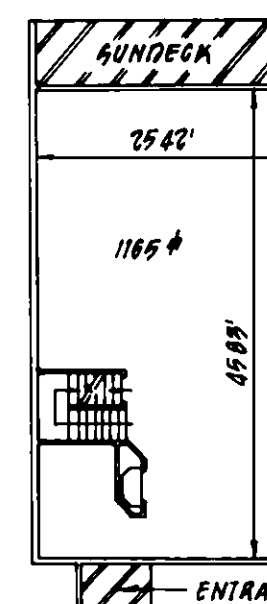
I, PHILLIP T. HENRY, A REGISTERED ENGINEER IN THE COMMONWEALTH OF VIRGINIA, HEREBY CERTIFY THAT THIS PLAN, EXHIBIT "A", ACCURATELY SHOWS THE UNITS DELINEATED AND COMPLIES WITH THE PROVISIONS OF SECTION 55-79.58 PARAGRAPH (b) OF THE CONDOMINIUM ACT. I FURTHER CERTIFY THAT UNLESS NOTED OTHERWISE ALL UNITS DEPICTED HEREON HAVE BEEN SUBSTANTIALLY COMPLETED.

GIVEN UNDER MY HAND THIS 12 DAY OF March, 1986.

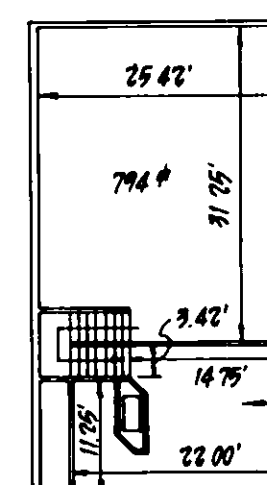
Phillip T. Henry
PHILLIP T. HENRY, P. E.



UNIT #206
3100 # (TOTAL)



FIRST FLOOR



SECOND FLOOR

TYPE "C-3" UNITS NUMBER	
BUILDING #6	
UNIT #206	1400506

NOTES:

1. INCLUDED AS PART OF EACH UNIT IS THE DRY WALL COVERING ENCLOSING SUCH UNIT. ALL INTERIOR DIMENSIONS SHOWN ON THIS PLAN ARE MEASURED TO THE INSIDE FACE OF STUDS OR TO THE INSIDE FACE OF CONCRETE FOUNDATION WALLS.
2. ALL VERTICAL DIMENSIONS ARE MEASURED FROM SUBFLOOR TO BOTTOM OF JOISTS.
3. UNIT DIMENSIONS SHOWN ARE TYPICAL AND ARE BASED UPON THE MEDIAN OF FIELD MEASUREMENTS OF ALL UNITS. SUBSTANTIALLY ALL DIMENSIONS FALL WITHIN A TOLERANCE OF .08 FEET OF THOSE SHOWN.
4. UNIT FLOOR AREAS ARE BASED ON THE BUILDING PLANS AND ARE WITHIN ONE PERCENT OF THE ACTUAL FLOOR AREAS.

EXHIBIT "A"
ADDITION TO PHASE II
FROM CONVERTIBLE LAND
WINDWARD CONDOMINIUM

SITUATED AT THE INTERSECTION OF
OGDEN ROAD & WINDING WAY ROAD, S.W.
ROANOKE, VIRGINIA

SCALE: 1/16" = 1' DATE: 17 JAN. 1986

BUFORD T. LUMSDEN & ASSOCIATES, P.C.
CERTIFIED LAND SURVEYORS
ROANOKE, VIRGINIA

82-74C

SHEET # 2 OF 2