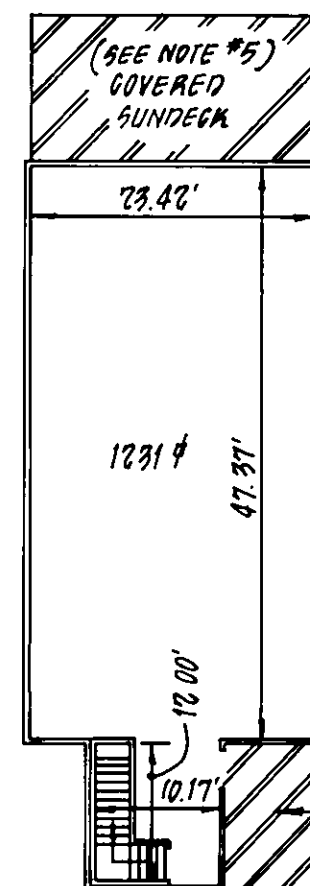


BASEMENT



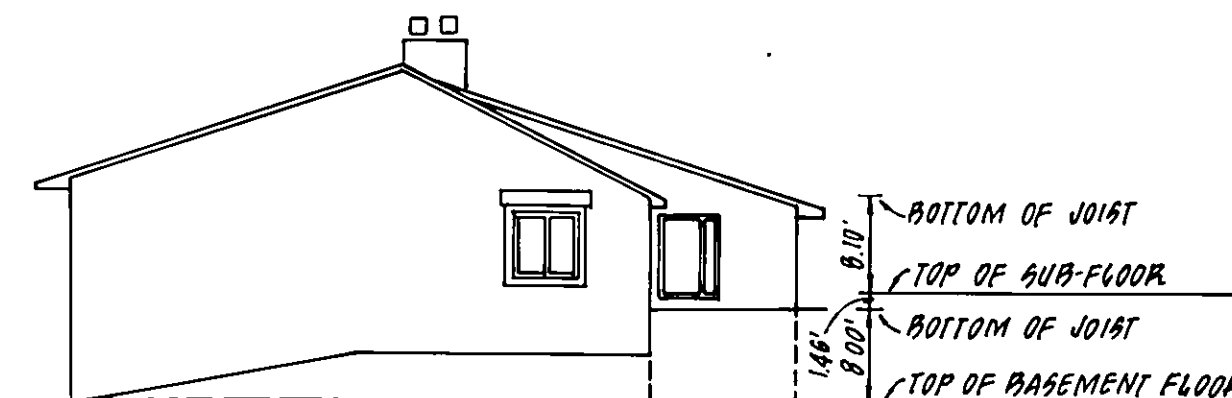
UNITS #210,
#211 & #212
2454 P (TOTAL)



FIRST FLOOR

TYPE "D" UNITS NUMBERS	
BUILDING #5	
UNIT #210	
UNIT #211	
UNIT #212	

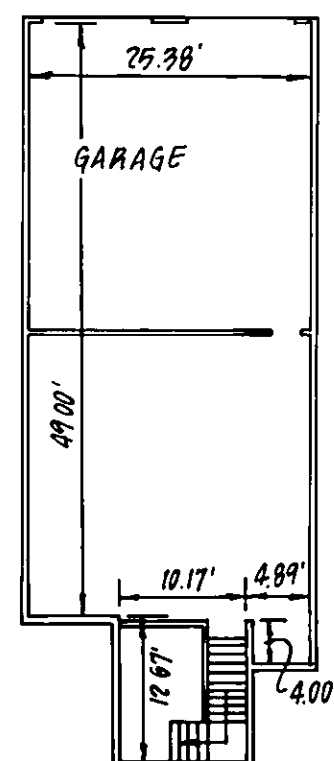
FIRST FLOOR ELEVATIONS (SUB FLOOR)	
BLDG. NO.	ELEVATION
5	1135.11



BUILDING #5
RIGHT SIDE ELEVATION

LEGEND

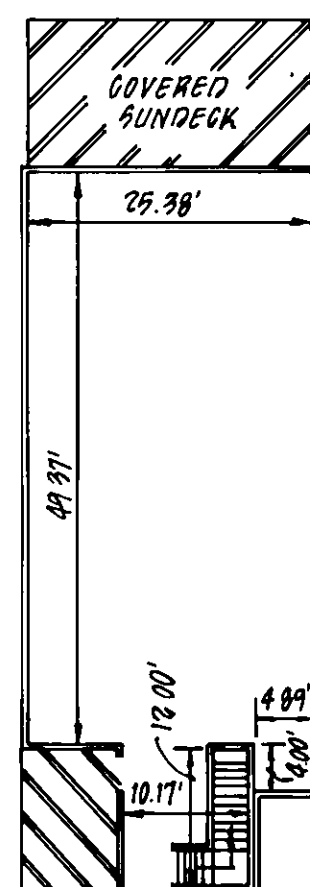
VERTICAL DATUM	U.S.G.S. MEAN SEA LEVEL
	DENOTES LIMITED COMMON ELEMENT
	DENOTES GENERAL COMMON ELEMENT
1231 P	AREA OF UNIT (SQ. FT.)
	ORIENTATION FOR PLAN VIEW



BASEMENT



UNIT #213
2787 P (TOTAL)



FIRST FLOOR

TYPE "D-2" UNITS NUMBERS	
BUILDING #5	
UNIT #213	



ENGINEER'S CERTIFICATE

I, Phillip T. Henry, A REGISTERED ENGINEER IN THE COMMONWEALTH OF VIRGINIA, HEREBY CERTIFY THAT THIS PLAN, EXHIBIT "A", ACCURATELY SHOWS THE UNITS DELINEATED AND COMPLIES WITH THE PROVISIONS OF SECTION 55-79.58 PARAGRAPH (b) OF THE CONDOMINIUM ACT. I FURTHER CERTIFY THAT UNLESS NOTED OTHERWISE ALL UNITS DEPICTED HEREON HAVE BEEN SUBSTANTIALLY COMPLETED.

GIVEN UNDER MY HAND THIS 19 DAY OF SEPT, 1986.

NOTES:

1. INCLUDED AS PART OF EACH UNIT IS THE DRY WALL COVERING ENCLOSING SUCH UNIT. ALL INTERIOR DIMENSIONS SHOWN ON THIS PLAT ARE MEASURED TO THE INSIDE FACE OF STUDS OR TO THE INSIDE FACE OF CONCRETE FOUNDATION WALLS.
2. ALL VERTICAL DIMENSIONS ARE MEASURED FROM SUBFLOOR TO BOTTOM OF JOISTS.
3. UNIT DIMENSIONS SHOWN ARE TYPICAL AND ARE BASED UPON THE MEDIAN OF FIELD MEASUREMENTS OF ALL UNITS. SUBSTANTIALLY ALL DIMENSIONS FALL WITHIN A TOLERANCE OF .08 FEET OF THOSE SHOWN.
4. UNIT FLOOR AREAS ARE BASED ON THE BUILDING PLANS AND ARE WITHIN ONE PERCENT OF THE ACTUAL FLOOR AREAS.
5. UNITS #212 AND #210 SUNDECKS TO BE ENCLOSED.

EXHIBIT "A"
2ND
ADDITION TO PHASE II
FROM CONVERTIBLE LAND
WINDWARD CONDOMINIUM

SITUATED AT THE INTERSECTION OF
OGDEN ROAD & WINDING WAY ROAD, S.W.
ROANOKE, VIRGINIA

SCALE: 1/16" = 1' DATE: 1 AUG. 1986

BUFORD T. LUMSDEN & ASSOCIATES, P.C.
CERTIFIED LAND SURVEYORS
ROANOKE, VIRGINIA



GRAPHIC SCALE

*82-746
SHEET # 2 OF 2