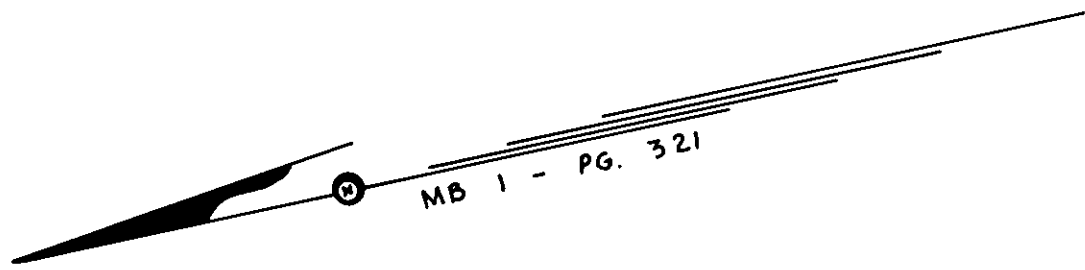


map Book 1  
page 662



SURVEYOR'S CERTIFICATE

I HEREBY CERTIFY THAT THIS PLAT AND PLAN OF CONDOMINIUM SUBDIVISION CONSISTING OF THREE (3) SHEETS, IS CORRECT THAT IT IS A SUBDIVISION OF LAND AND BUILDING ENTITLED "1ST ADDITION, PHASE III FROM EXPANDABLE LAND, WINDWARD CONDOMINIUM" AS RECORDED AMONG THE LAND RECORDS OF ROANOKE, VIRGINIA IN DEED BOOK \_\_\_\_\_ PAGE \_\_\_\_\_ AND OF THE IMPROVEMENTS LOCATED THEREON CONSISTING OF ONE (1) BUILDING CONTAINING SIX (6) UNITS AND THAT IT HAS BEEN PREPARED PURSUANT TO AND IN COMPLIANCE OF THE CODE OF VIRGINIA AS AMENDED, I.E. "THE CONDOMINIUM ACT". I FURTHER CERTIFY THAT THE LOCATIONS AND DIMENSIONS OF ALL EXISTING IMPROVEMENTS HAVE BEEN CAREFULLY ESTABLISHED BY A TRANSIT TAPE SURVEY AND THAT, UNLESS OTHERWISE SHOWN, THERE ARE NO VISIBLE ENCROACHMENTS. I FURTHER CERTIFY THAT ALL CONDOMINIUM UNITS, OR PORTIONS THEREOF, DEPICTED ON THIS PLAT AND PLAN OF CONDOMINIUM SUBDIVISION HAVE BEEN SUBSTANTIALLY COMPLETED. THE TOTAL AREA INCLUDED WITHIN THE BOUNDS OF "1ST ADDITION, PHASE III FROM EXPANDABLE LAND, WINDWARD CONDOMINIUM" IS 0.61 ACRE OF SUBMITTED LAND AND 8.93 ACRES OF REMAINING EXPANDABLE LAND.

Philip W. Nester  
PHILIP W. NESTER, LS 1398

AUGUST 19, 1987  
DATE

IN THE CLERK'S OFFICE OF THE CIRCUIT COURT OF THE CITY OF ROANOKE, VIRGINIA, THIS PLAT WAS PRESENTED ON THIS 12 DAY OF October 1987, AND WITH THE CERTIFICATE OF ACKNOWLEDGEMENT HERETO ANNEXED ADMITTED TO RECORD AT 11:46 O'CLOCK AM.

TESTEE: PAULY TESTERMAN, CLERK  
CLERK

BY: Sharon J. Fisher  
DEPUTY CLERK

PHASE III  
0.61 ACRE

LEGEND

SURVEYED PROPERTY LINE

DEED LINE

CONCRETE LANDING / LIMITED COMMON ELEMENT

OPTIONAL DECK WITH PRIVACY FENCE, LIMITED COMMON ELEMENT

STANDARD DECK WITH PRIVACY FENCE, LIMITED COMMON ELEMENT

NOTES

- 1) THIS IS TO CERTIFY THAT I HAVE CONSULTED THE FEDERAL INSURANCE ADMINISTRATION FLOOD HAZARD BOUNDARY MAP AND FOUND THAT THE PROPERTY IS NOT LOCATED IN A SPECIAL FLOOD HAZARD ZONE
- 2) TOTAL PARKING SPACES = 12

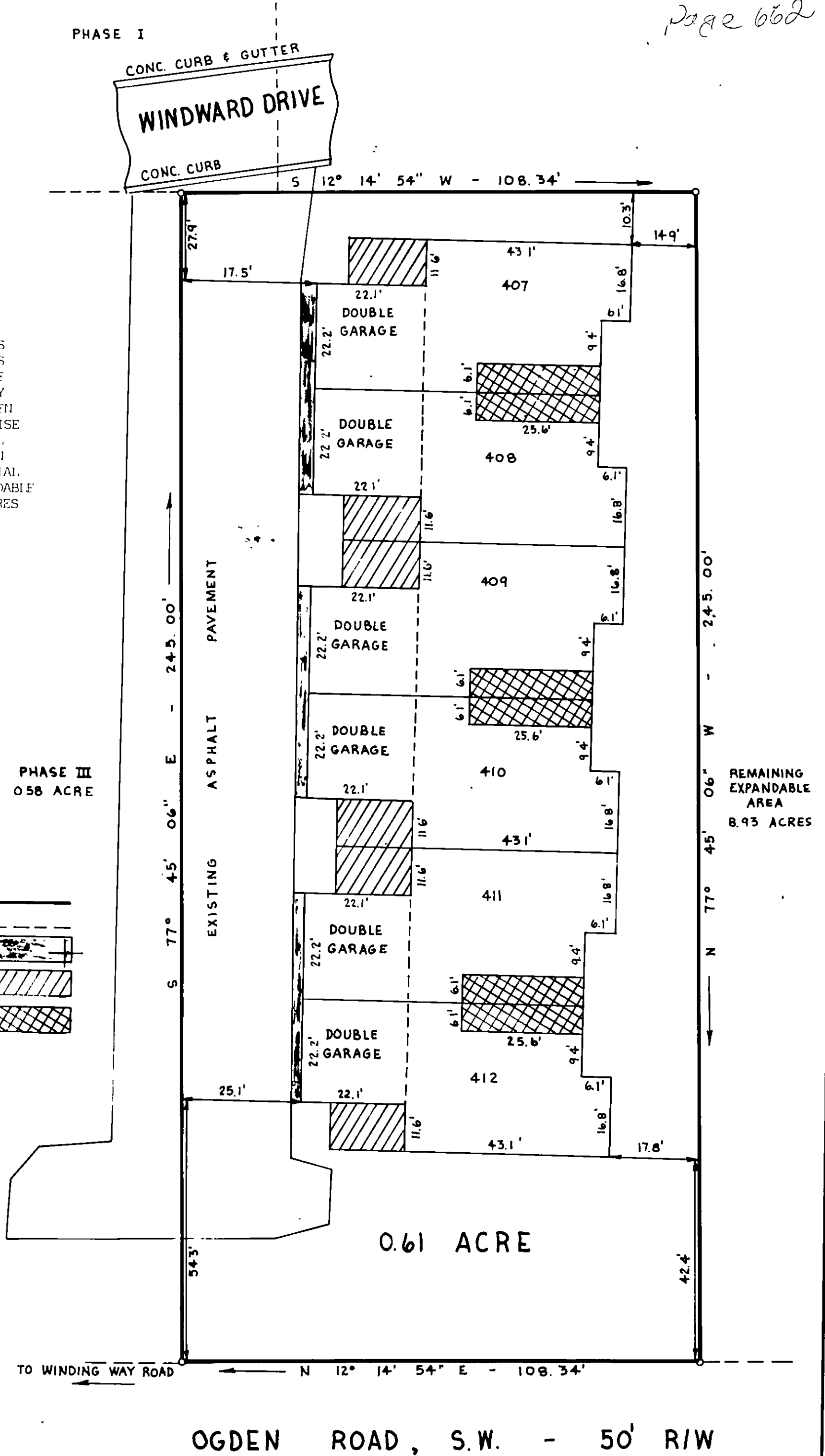


EXHIBIT "A"

1ST ADDITION

PHASE III

WINDWARD CONDOMINIUM

CITY OF ROANOKE, VIRGINIA

SURVEYED AUGUST 14, 1987

JOB NUMBER 146-87

