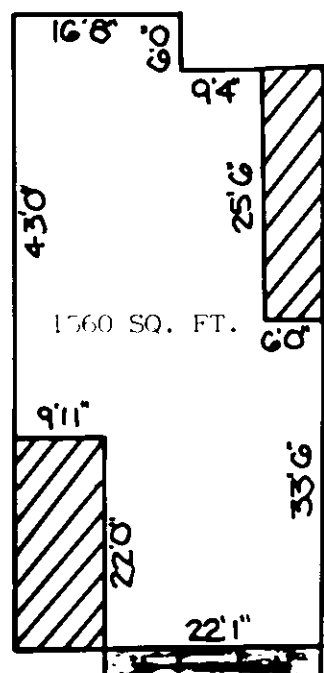
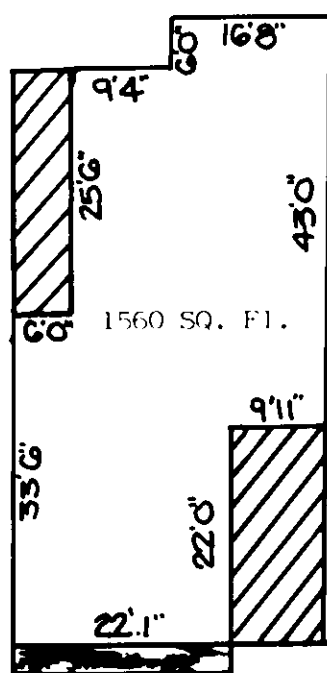


SCALE: 1" = 20'



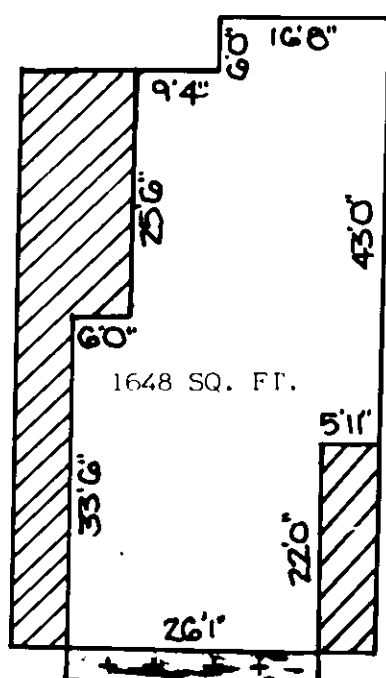
TYPE "S" UNITS

BUILDING NO. 16, UNIT 320 & 322  
BUILDING NO. 15, UNIT 324 & 326  
BUILDING NO. 23, UNIT 442  
BUILDING NO. 22, UNIT 445 & 447



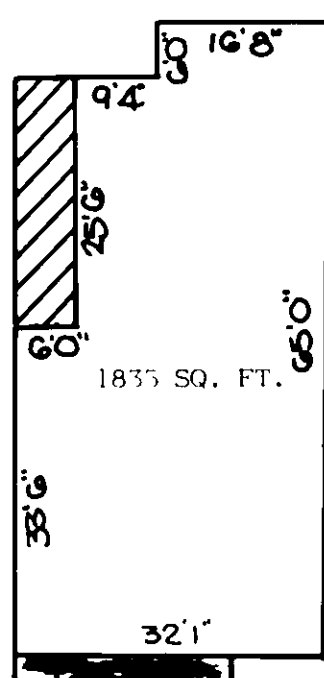
TYPE "S" UNITS

BUILDING NO. 16, UNIT 321  
BUILDING NO. 15, UNIT 323 & 325  
BUILDING NO. 23, UNIT 441  
BUILDING NO. 22, UNIT 444 & 446



TYPE "S-3" UNITS

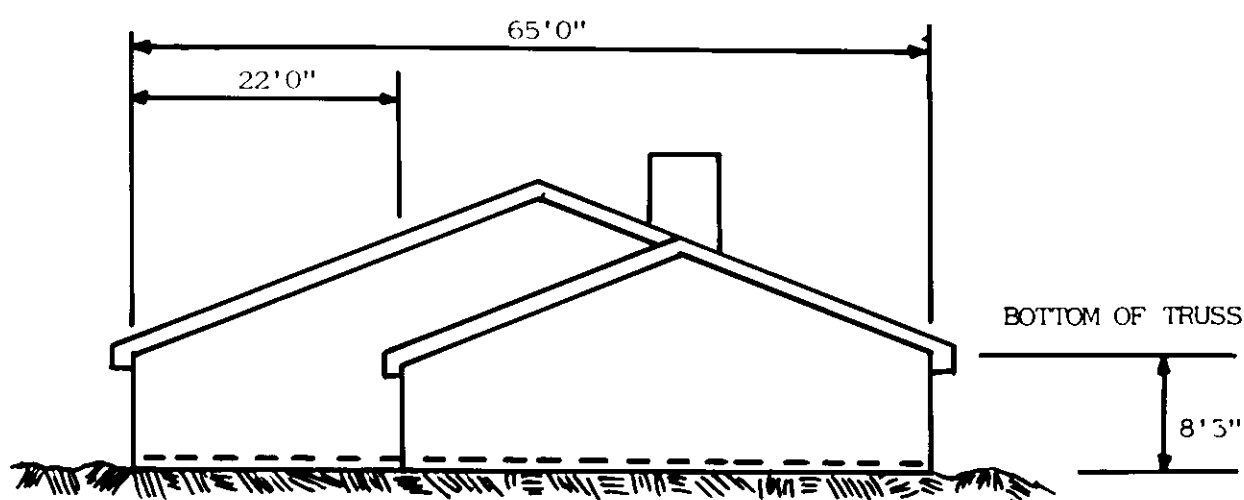
BUILDING NO. 23, UNIT 443



TYPE "S-7" UNITS

BUILDING NO. 16, UNIT 319

# FIRST FLOOR ELEVATIONS FINISHED FLOOR



LEFT SIDE ELEVATION  
SCALE: 1/16" = 1'

BUILDING NO. 16, 1126.10'  
BUILDING NO. 15, 1124.80'  
BUILDING NO. 23, 1124.00'  
BUILDING NO. 22, 1124.30'

## ARCHITECT'S CERTIFICATE:

I, JEROME HENSCH A REGISTERED ARCHITECT IN THE COMMONWEALTH OF VIRGINIA, HEREBY CERTIFY THAT THIS PLAN EXHIBIT "A" ACCURATELY SHOWS THE UNITS DELINEATED AND COMPLIES WITH THE PROVISIONS OF SECTION 55-79.58 PARAGRAPH (b) OF THE CONDOMINIUM ACT. I FURTHER CERTIFY THAT UNLESS NOTED OTHERWISE ALL UNITS DEPICTED HEREON HAVE BEEN SUBSTANTIALLY COMPLETED.

GIVEN UNDER BY HAND THIS 27 DAY OF OCTOBER, 1988.

## LEGEND :

DRIVEWAY APRON, LIMITED COMMON ELEMENT



PATIO AREA (STANDARD OR OPTIONAL) LIMITED COMMON ELEMENT



## NOTES:

1. INCLUDED AS A PART OF EACH UNIT IS THE DRY WALL COVERING ENCLOSING SUCH UNIT. ALL INTERIOR DIMENSIONS SHOWN ON THIS PLAT ARE MEASURED TO THE INSIDE FACE OF CONCRETE FOUNDATION WALLS.
2. VERTICAL DIMENSIONS ARE MEASURED FROM SUBFLOOR TO BOTTOM OF JOISTS.
3. UNIT DIMENSIONS SHOWN ARE TYPICAL AND ARE BASED UPON THE MEDIAN OF FIELD MEASUREMENTS OF OF ALL UNITS. SUBSTANTIALLY ALL DIMENSIONS FALL WITHIN A TOLERANCE OF 0.08 FEET OF THOSE SHOWN.
4. UNIT FLOOR AREAS ARE BASED ON THE BUILDING PLANS AND ARE WITHIN ONE PERCENT OF THE ACTUAL FLOOR AREAS.

EXHIBIT "A"

8TH ADDITION

PHASE III

## WINDWARD CONDIMINIUMS

CITY OF ROANOKE, VIRGINIA

SURVEYED AUGUST 26, 1988

JOB NUMBER 208-87

In The Clerk's Office of the Circuit Court of the City of Roanoke, Virginia, This plat was presented on this 1st day of November, 1988, and with the certificate of acknowledgment thereto annexed admitted to record at 9:32 o'clock A.M.  
Tested by Robert Testerman By James D. Phillips  
Clerk Deputy Clerk