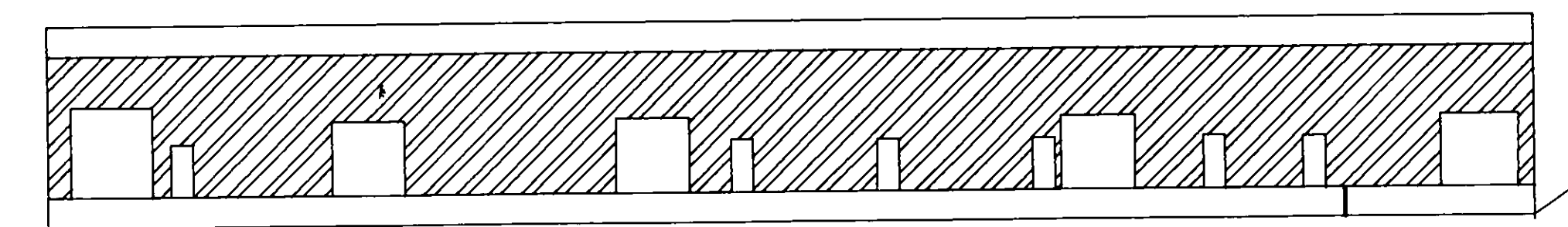
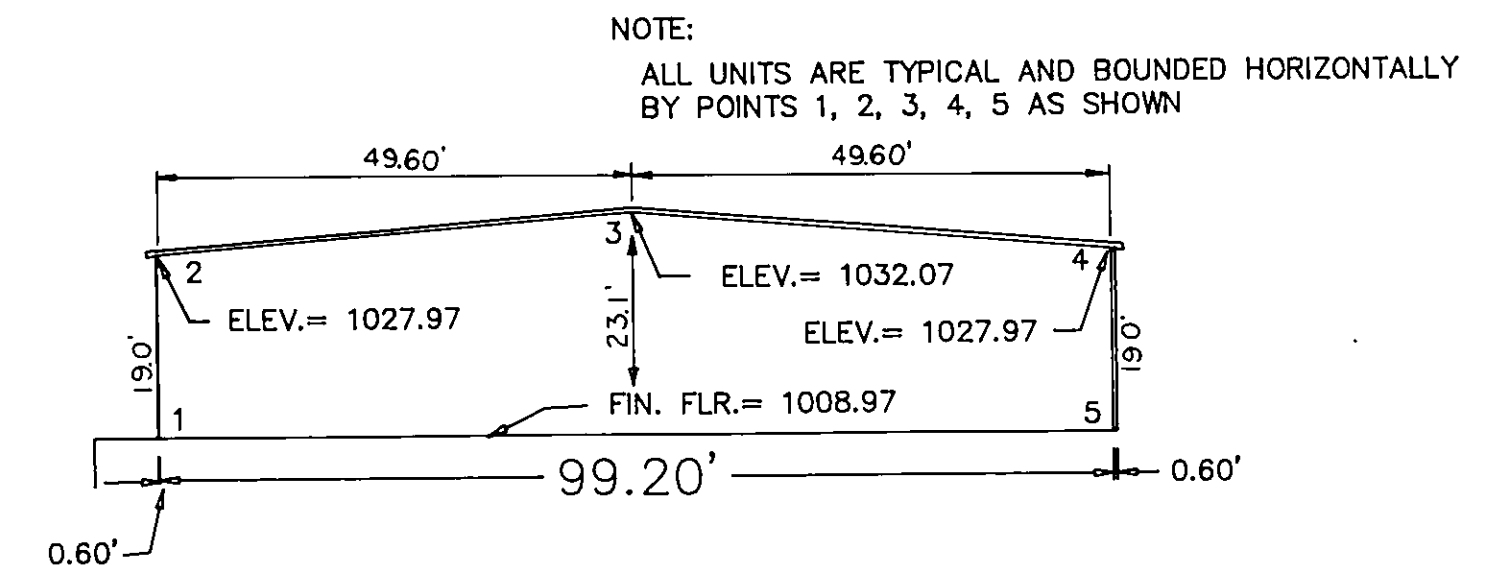


PLAN VIEW
SCALE: 1" = 20'



FRONT ELEVATION
SCALE: 1" = 20'



SECTION A-A
SCALE: 1" = 20'

BENCHMARK

CHISELED SQUARE ON S.W. CORNER OF LOADING DOCK
ELEV. = 1008.63 (BASED ON WILLIAMSON ROAD STORM SEWER DATUM)

ENGINEERS CERTIFICATE

I, JOHN T. PARKER, A REGISTERED ENGINEER
IN THE COMMONWEALTH OF VIRGINIA, HEREBY CERTIFY THAT THE LOCATION
PLAT, EXHIBIT "A" ACCURATELY SHOWS THE UNITS DELINEATED AND COMPLIES
WITH THE PROVISIONS OF SECTION 55-79-58, PARAGRAPH (B) OF THE
CONDOMINIUM ACT. I FURTHER CERTIFY THAT ALL UNITS OR PORTIONS THEREON
DEPICTED HEREON HAVE BEEN SUBSTANTIALLY COMPLETED. GIVEN UNDER
MY HAND THIS 23RD DAY OF JANUARY 1989.

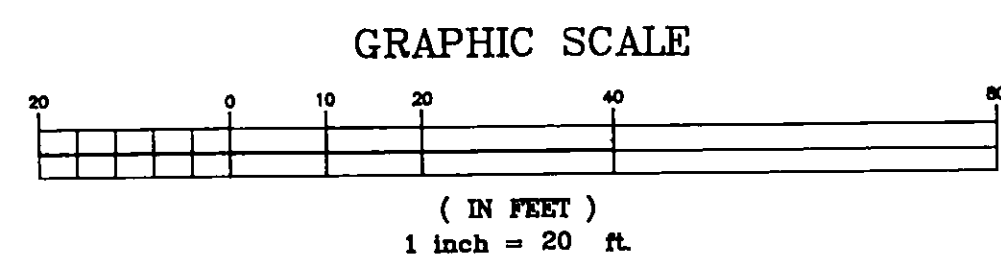
John T. Parker
JOHN T. PARKER, P.E. LIC. # 5447

KIMBALL DEVELOPERS, INC.
CONDOMINIUMS

PROPERTY OF
KIMBALL DEVELOPERS, INC.

ROANOKE, VIRGINIA

T. P. PARKER & SON
ENGINEERS & SURVEYORS, LTD.



TAX NO. 313-0917
DRAWN: DAP
CALC.: DAP
N.B.: JR-48

SCALE: AS NOTED
JAN. 18, 1989
W.O. 88-0083

SHEET 2 OF 2

M.B. 1 PG. 816