

PARTIAL SURVEY &  
SUBDIVISION FOR  
**ROANOKE MEMORIAL HOSPITALS**

SHOWING THE RESUBDIVISION OF  
9 PARCELS OF LAND AND WELLER LANE, S.E.(CLOSED  
BY CITY ORDINANCE NO. 30430-31801)

ROANOKE, VIRGINIA

**T. P. PARKER & SON**

ENGINEERS - SURVEYORS - PLANNERS

DRAWN: DAP/CADD

SCALE: AS SHOWN

CALC.: DAP

NOVEMBER 26, 1990

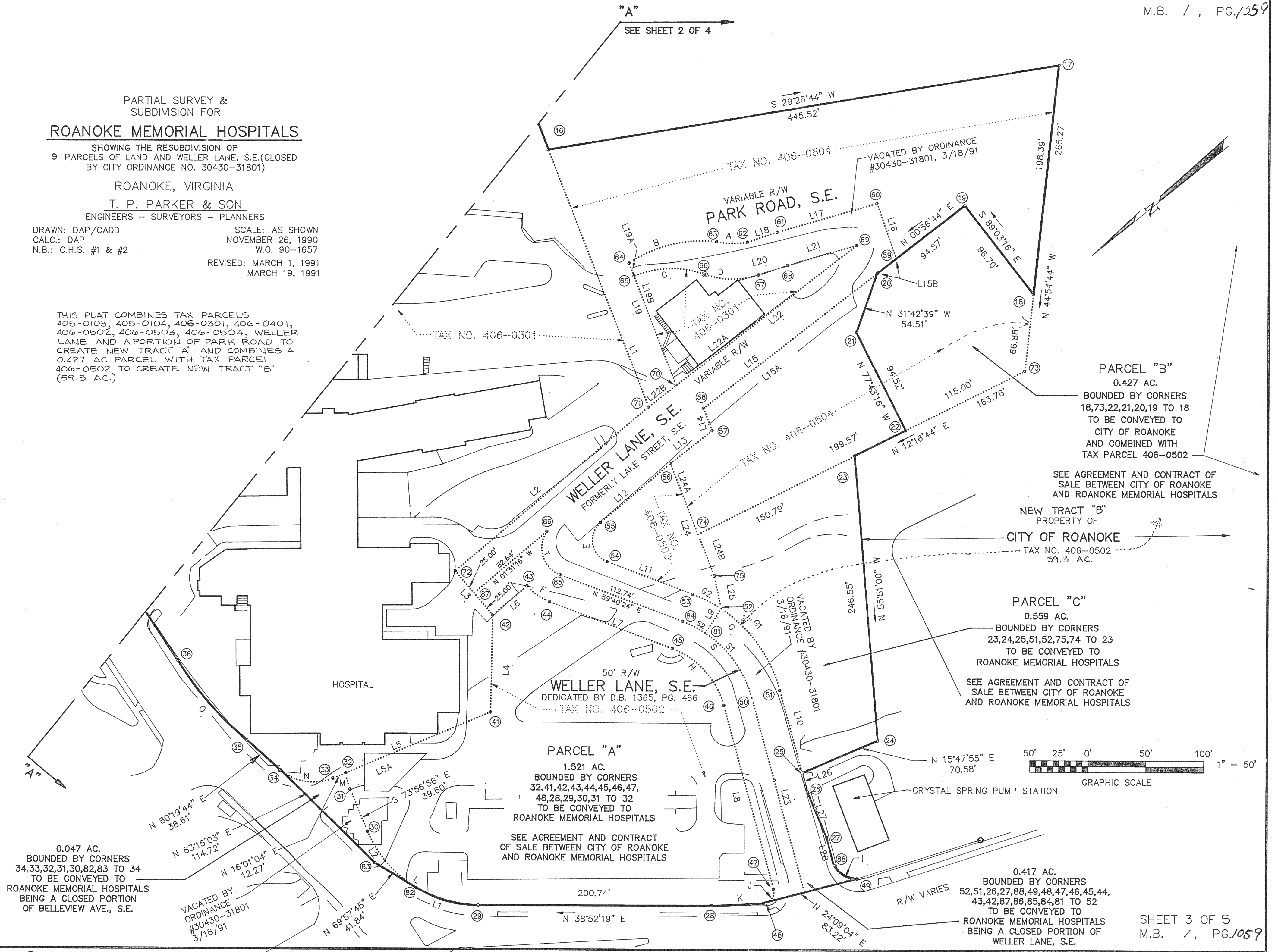
N.B.: C.H.S. #1 & #2

W.O. 90-1657

REVISED: MARCH 1, 1991  
MARCH 19, 1991

THIS PLAT COMBINES TAX PARCELS  
405-0103, 405-0104, 406-0301, 406-0401,  
406-0502, 406-0503, 406-0504, WELLER  
LANE AND A PORTION OF PARK ROAD TO  
CREATE NEW TRACT "A" AND COMBINES A  
0.427 AC. PARCEL WITH TAX PARCEL  
406-0502 TO CREATE NEW TRACT "B"  
(59.3 AC.)

"A"  
SEE SHEET 2 OF 4



PARCEL "B"  
0.427 AC.  
BOUNDED BY CORNERS  
18,73,22,21,20,19 TO 18  
TO BE CONVEYED TO  
CITY OF ROANOKE  
AND COMBINED WITH  
TAX PARCEL 406-0502

SEE AGREEMENT AND CONTRACT OF  
SALE BETWEEN CITY OF ROANOKE  
AND ROANOKE MEMORIAL HOSPITALS

NEW TRACT "B"  
PROPERTY OF  
CITY OF ROANOKE  
TAX NO. 406-0502  
59.3 AC.

PARCEL "C"  
0.559 AC.  
BOUNDED BY CORNERS  
23,24,25,51,52,75,74 TO 23  
TO BE CONVEYED TO  
ROANOKE MEMORIAL HOSPITALS  
SEE AGREEMENT AND CONTRACT OF  
SALE BETWEEN CITY OF ROANOKE  
AND ROANOKE MEMORIAL HOSPITALS

0.047 AC.  
BOUNDED BY CORNERS  
34,33,32,31,30,82,83 TO 34  
TO BE CONVEYED TO  
ROANOKE MEMORIAL HOSPITALS  
BEING A CLOSED PORTION  
OF BELLEVUE AVE., S.E.

VACATED BY  
ORDINANCE  
#30430-31801  
3/18/91

PARCEL "A"  
1.521 AC.  
BOUNDED BY CORNERS  
32,41,42,43,44,45,46,47,  
48,28,29,30,31 TO 32  
TO BE CONVEYED TO  
ROANOKE MEMORIAL HOSPITALS  
SEE AGREEMENT AND CONTRACT  
OF SALE BETWEEN CITY OF ROANOKE  
AND ROANOKE MEMORIAL HOSPITALS

0.417 AC.  
BOUNDED BY CORNERS  
52,51,26,27,88,49,48,47,46,45,44,  
43,42,87,86,85,84,81 TO 52  
TO BE CONVEYED TO  
ROANOKE MEMORIAL HOSPITALS  
BEING A CLOSED PORTION OF  
WELLER LANE, S.E.