

MERIDIAN OF MOUNTAIN PARK
D.B. 388, PG. 380

NOTES:

1. THIS PLAT IS SUBJECT TO INFORMATION WHICH MAY BE DISCLOSED BY A TITLE REPORT BY A LICENSED ATTORNEY.
2. THE SUBJECT PROPERTY IS WITHIN THE LIMITS OF ZONE "C" AS SHOWN ON THE FEMA FLOOD INSURANCE RATE MAP. THIS DETERMINATION IS BASED ON THE FLOOD BOUNDARY MAP AND HAS NOT BEEN VERIFIED BY ACTUAL FIELD ELEVATIONS.
3. SEE PLAT FOR DR. E. G. GILL BY C. B. MALCOLM, S.C.E. DATED JANUARY 8, 1964.

TRUE STREET LINE AS
CALLED FOR ON PLAT
FOR DR. E. G. GILL BY
C. B. MALCOLM, S.C.E.
DATED 1/8/64

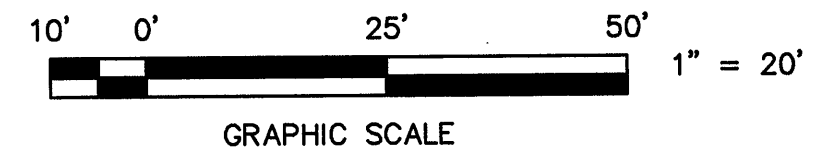
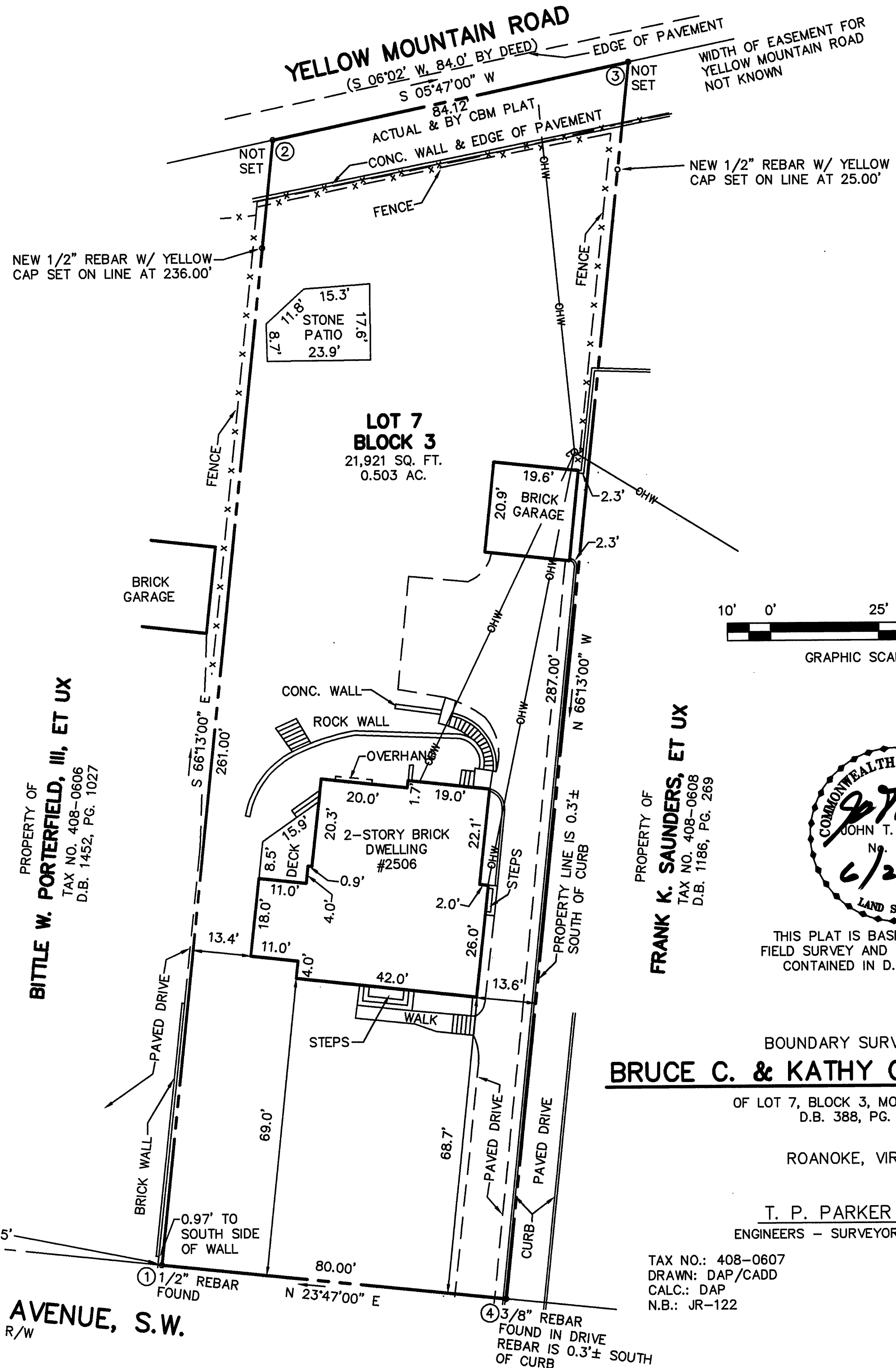
CORNER "A" TO CORNER "1"
= 480.04' ACTUAL
(480.0' BY MALCOLM PLAT)
81.74'

IN THE CLERK'S OFFICE OF THE CIRCUIT COURT OF THE CITY OF ROANOKE,
VIRGINIA THIS MAP WAS PRESENTED AND ADMITTED TO RECORD AT 10:20 O'CLOCK
A.M. ON THIS 7 DAY OF July, 1993.

TESTE: ARTHUR B. CRUSH, III
CLERK
BY: PATTY HUMPHREYS
DEPUTY CLERK

CORNWALLIS AVENUE, S.W.
60' R/W

PROPERTY OF
BITTLE W. PORTERFIELD, III, ET UX
TAX NO. 408-0606
D.B. 1452, PG. 1027



PROPERTY OF
FRANK K. SAUNDERS, ET UX
TAX NO. 408-0608
D.B. 1186, PG. 269



THIS PLAT IS BASED ON A CURRENT
FIELD SURVEY AND LEGAL DESCRIPTIONS
CONTAINED IN D.B. 1488, PG. 813

BOUNDARY SURVEY FOR
BRUCE C. & KATHY G. STOCKBURGER

OF LOT 7, BLOCK 3, MOUNTAIN PARK,
D.B. 388, PG. 380

ROANOKE, VIRGINIA

T. P. PARKER & SON
ENGINEERS - SURVEYORS - PLANNERS

TAX NO.: 408-0607
DRAWN: DAP/CADD
CALC.: DAP
N.B.: JR-122

SCALE: 1" = 20'
JUNE 21, 1993
W.O.: 93-1060