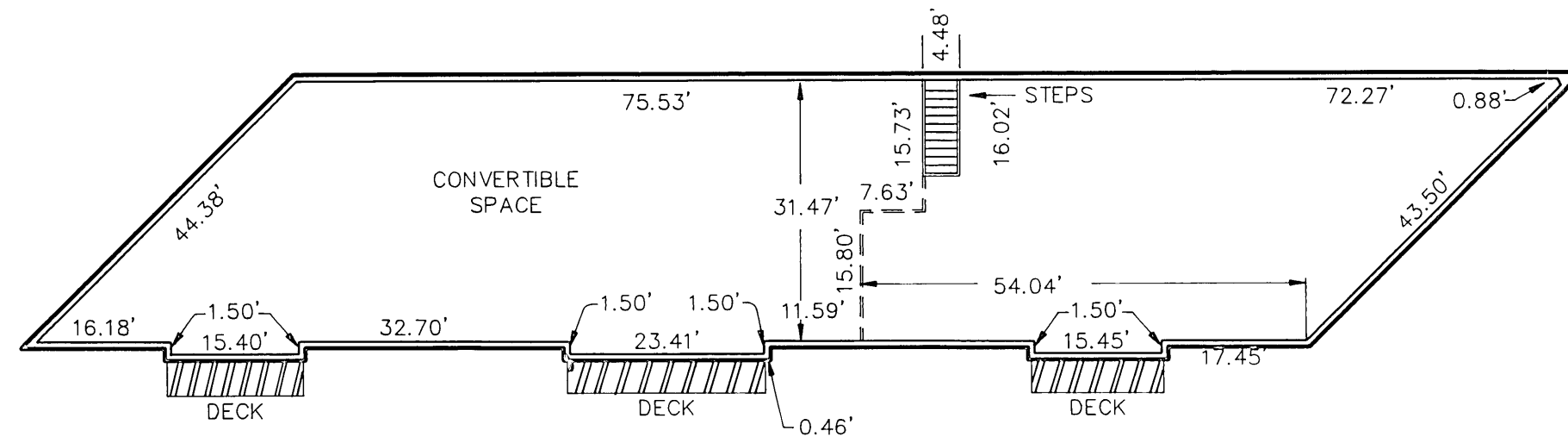


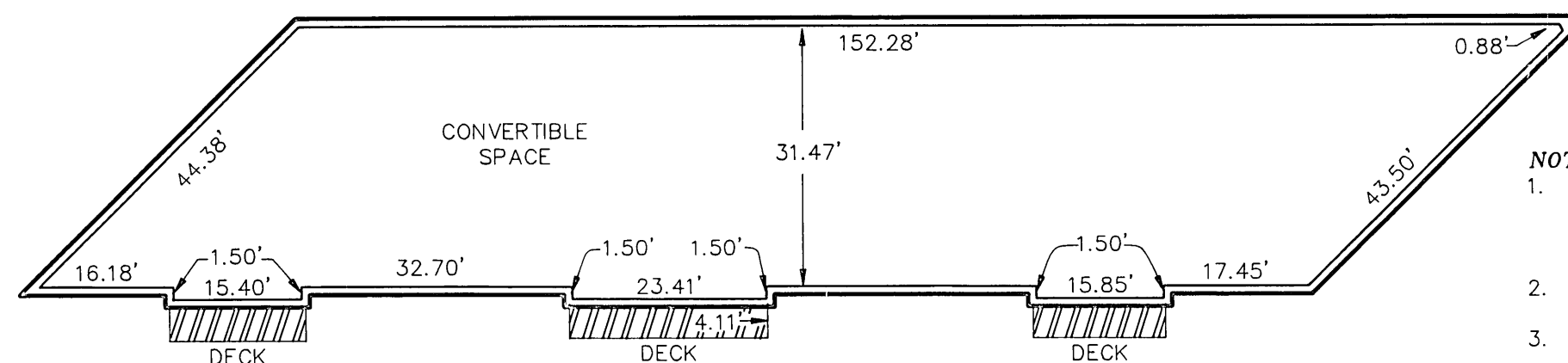
**ATTIC**  
TYPE "D"  
FUTURE UNIT #2006  
3329 SQUARE FEET

FRONT



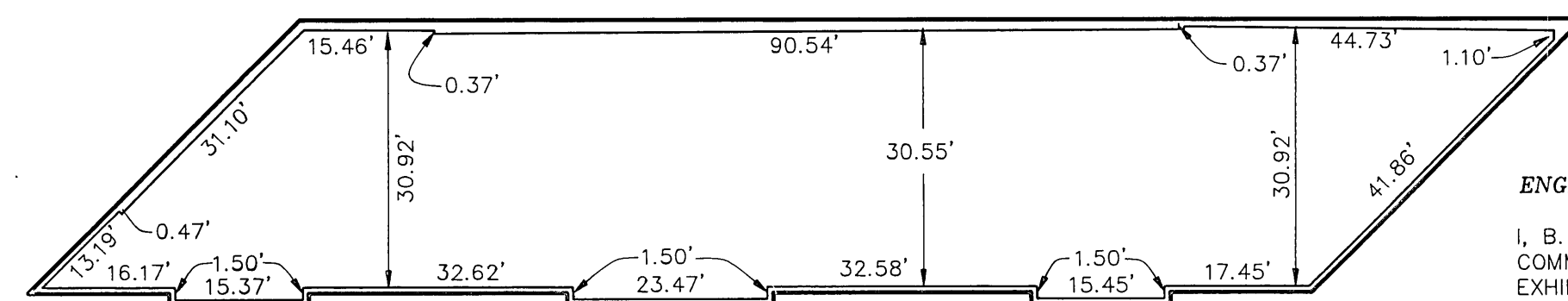
**SECOND FLOOR**  
TYPE "C"  
FUTURE UNIT #2004  
4855 SQUARE FEET

FRONT



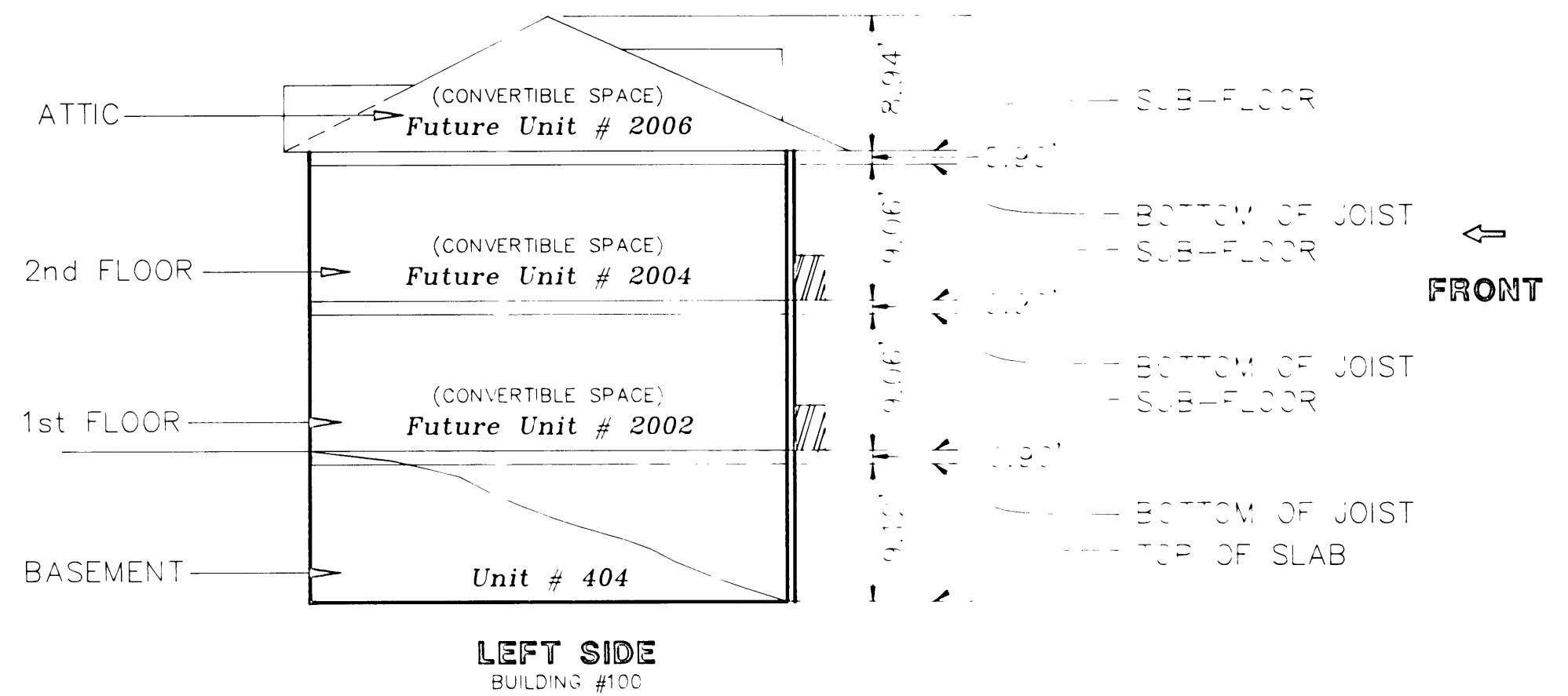
**FIRST FLOOR**  
TYPE "B"  
FUTURE UNIT #2002  
4907 SQUARE FEET

FRONT



**BASEMENT**  
TYPE "A"  
UNIT #404  
4786 SQUARE FEET

FRONT



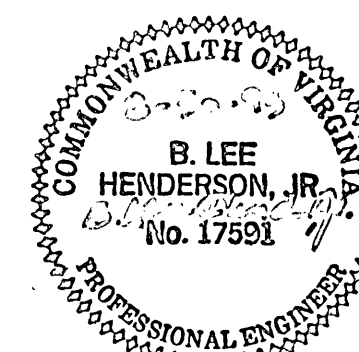
BASEMENT FLOOR ELEVATION	SUB-FLOOR
BUILDING #	ELEVATION
100	961.99'

### LEGEND

- LIMITED COMMON AREA
- GENERAL COMMON AREA
- ORIENTATION FOR PLAN VIEW
- VERTICAL DATUM - U.S.G.S. MEAN SEA LEVEL
- 4786 SQUARE FEET - AREA OF UNIT

### NOTES:

1. INCLUDED AS PART OF EACH UNIT IS THE DRY WALL COVERING ENCLOSING SUCH UNIT. ALL INTERIOR DIMENSIONS SHOWN ON THIS PLAN ARE MEASURED TO THE INSIDE FACE OF STUDS OR TO THE INSIDE FACE OF CONCRETE FOUNDATION WALLS.
2. SQUARE FOOTAGE SHOWN DOES NOT INCLUDE AREA FOR FIREPLACE, PATIOS, BALCONIES OR STORAGE ROOMS.
3. ALL VERTICAL DIMENSIONS ARE MEASURED FROM SUB-FLOOR TO BOTTOM OF JOISTS.
4. UNIT DIMENSIONS SHOWN ARE TYPICAL AND ARE BASED UPON THE MEDIAN OF FIELD MEASUREMENTS OF ALL UNITS. SUBSTANTIALLY ALL DIMENSIONS FALL WITHIN A TOLERANCE OF 0.08 FEET OF THOSE SHOWN.
5. UNIT FLOOR AREAS ARE BASED ON THE BUILDING PLANS AND ARE WITHIN ONE PERCENT OF THE ACTUAL FLOOR AREAS.



### ENGINEER'S CERTIFICATE

I, B. LEE HENDERSON, JR., A REGISTERED ENGINEER IN THE COMMONWEALTH OF VIRGINIA, HEREBY CERTIFY THAT THIS PLAN, EXHIBIT "A", ACCURATELY SHOWS THE UNITS DELINEATED AND COMPLIES WITH THE PROVISIONS OF SECTION 55-79.58 PARAGRAPH (B) OF THE CONDOMINIUM ACT. I FURTHER CERTIFY THAT UNLESS NOTED OTHERWISE ALL UNITS DEPICTED HEREON HAVE BEEN SUBSTANTIALLY COMPLETED.

GIVEN UNDER MY HAND THIS 30 DAY OF August, 1993.

*B. Lee Henderson, Jr.*  
B. LEE HENDERSON, JR., P.E.

## EXHIBIT "C"

# THE CAMBRIDGE CONDOMINIUM PHASE 1

PROPERTY OF  
KINSEY AND BOONE,  
A VIRGINIA GENERAL PARTNERSHIP

SITUATED ALONG  
STEPHENSON AVENUE & McCLANAHAN STREET  
ROANOKE, VIRGINIA  
SCALE: 1" = 20' DATE: 25 AUGUST 1993

LUMSDEN ASSOCIATES, P.C.  
ENGINEERS-SURVEYORS-PLANNERS  
ROANOKE, VIRGINIA

COMM. # 93-130