

NOTE: THE ORIGINAL SCALE OF THIS MAP HAS NOT BEEN REDUCED

IN THE CLERKS OFFICE OF THE CIRCUIT COURT
 OF THE CITY OF ROANOKE, VIRGINIA. THIS MAP
 WAS PRESENTED April 28
 1994 AND WITH THE CERTIFICATES OF DEDICATION
 AND ACKNOWLEDGEMENTS THERETO ATTACHED
 IS ADMITTED TO RECORD AT 10:15 O'CLOCK M.

ARTHUR D. CRUSH, CLERK
 TESTE: By Lenn Bester
 Deputy CLERK

IN THE CLERKS OFFICE OF THE CIRCUIT COURT
 OF THE COUNTY OF ROANOKE, VIRGINIA. THIS
 MAP WAS PRESENTED
 1993, AND WITH THE CERTIFICATES OF DEDICATION
 AND ACKNOWLEDGEMENTS THERETO ATTACHED,
 IS ADMITTED TO RECORD AT O'CLOCK
 M.

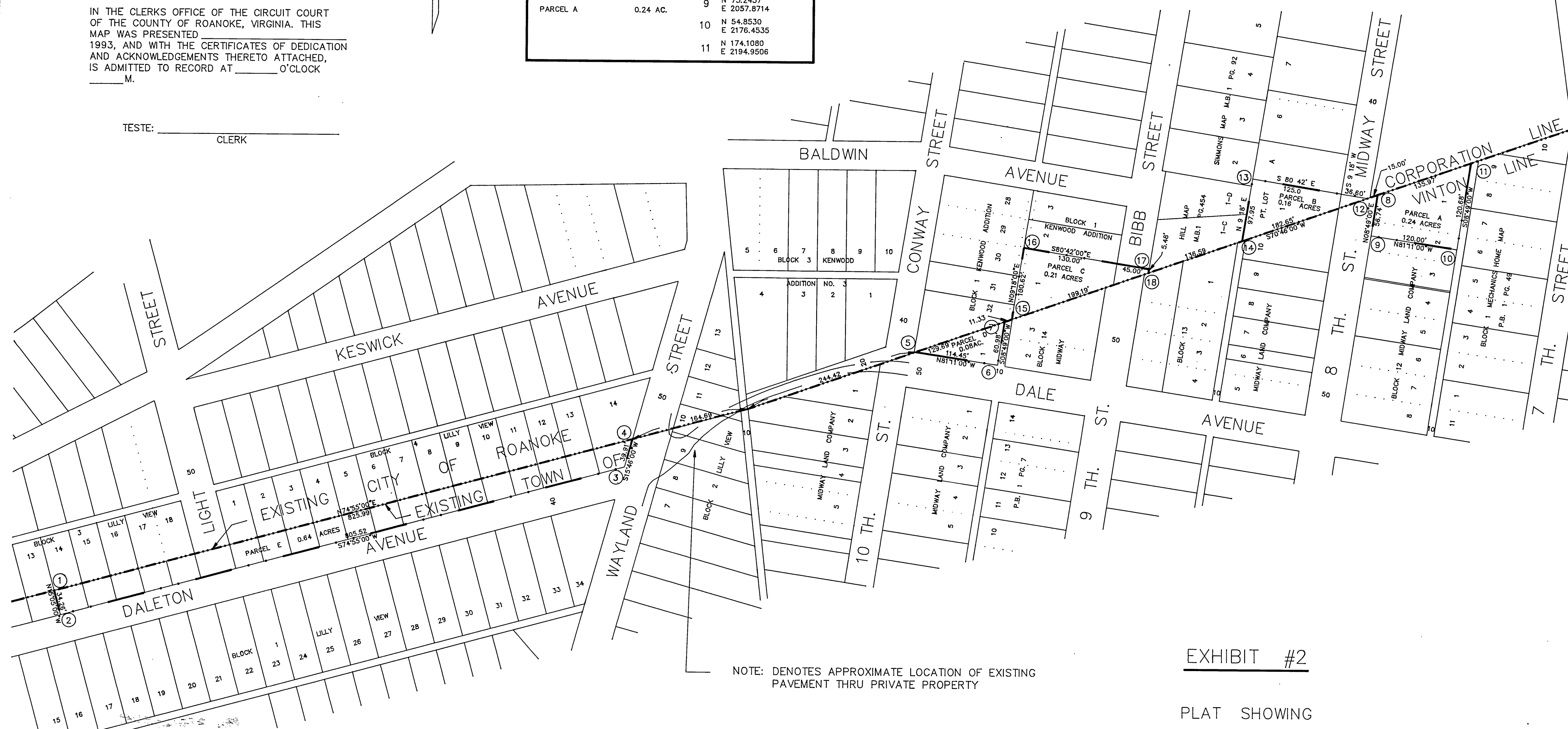
TESTE:
 CLERK

AREA OF ADJUSTMENT FROM VINTON TO ROANOKE CITY

PARCEL E	0.64 AC.	1	N -431.0272
		E	242.7292
		2	N -464.1091
		E	251.6450
PARCEL D	0.08 AC.	3	N -254.4936
		E	1029.4138
		4	N -216.0863
		E	1040.2578
PARCEL A	0.24 AC.	5	N -92.5684
		E	1430.5925
		6	N -110.1109
		E	1543.6921
		7	N -49.8481
		E	1553.0392
		8	N 129.3167
		E	2066.5683
		9	N 73.2457
		E	2057.8714
		10	N 54.8530
		E	2176.4535
		11	N 174.1080
		E	2194.9506

TO THE CITY OF ROANOKE		
PARCEL A	0.24	AC.
PARCEL D	0.08	AC.
PARCEL E	0.64	AC.
TOTAL	0.96	AC.

TO THE TOWN OF VINTON		
PARCEL B	0.16	AC.
PARCEL C	0.21	AC.
TOTAL	0.37	AC.



NOTE: DASHED LINE DENOTES APPROXIMATE LOCATION OF EXISTING
 PAVEMENT THRU PRIVATE PROPERTY

EXHIBIT #2

PLAT SHOWING
 BOUNDARY MAP LINE ADJUSTMENT AREA II
 BETWEEN
 THE CITY OF ROANOKE, THE TOWN OF VINTON
 AND THE COUNTY OF ROANOKE

LEGEND :
 - - - - - EXIST. BOUNDARY LINE
 - . . . - - PROPOSED BOUNDARY LINE

DATE MARCH 1, 1993

SCALE 1" = 100'

SEE D.B. 1708 PG. 1835
 FOR COURT DECREE
 EFFECTIVE JAN. 1994

MAP PREPARED BY THE OFFICE OF THE
 CITY ENGINEER, CITY OF ROANOKE VA.