

IN THE CLERKS OFFICE OF THE CIRCUIT COURT
OF THE CITY OF ROANOKE, VIRGINIA. THIS MAP
WAS PRESENTED April 28
1993, AND WITH THE CERTIFICATES OF DEDICATION
AND ACKNOWLEDGEMENTS THERETO ATTACHED
IS ADMITTED TO RECORD AT 12:15 O'CLOCK A.M.

TESTE: By Lisa Esterson
CLERK

IN THE CLERKS OFFICE OF THE CIRCUIT COURT
OF THE COUNTY OF ROANOKE, VIRGINIA. THIS
MAP WAS PRESENTED
1993, AND WITH THE CERTIFICATES OF DEDICATION
AND ACKNOWLEDGEMENTS THERETO ATTACHED,
IS ADMITTED TO RECORD AT _____ O'CLOCK
_____M.

TESTE: _____
CLERK

AREA OF ADJUSTMENT FROM ROANOKE CITY TO VINTON

PARCEL B	0.16 AC.	12	N 124.3764 E 2052.4080
		13	N 150.3081 E 1894.0521
		14	N 64.2086 E 1879.9528
PARCEL C	0.21 AC.	15	N -46.4042 E 1562.9100
		16	N 52.8980 E 1579.1714
		17	N 24.6173 E 1751.8712
		18	N 19.2135 E 1750.9863

TO THE CITY OF ROANOKE		
PARCEL A	0.24	AC.
PARCEL D	0.08	AC.
PARCEL E	0.64	AC.
TOTAL	0.96	AC.

TO THE TOWN OF VINTON		
PARCEL B	0.16	AC.
PARCEL C	0.21	AC.
TOTAL	0.37	AC.

NOTE: THE ORIGINAL SCALE OF THIS MAP HAS NOT BEEN REDUCED

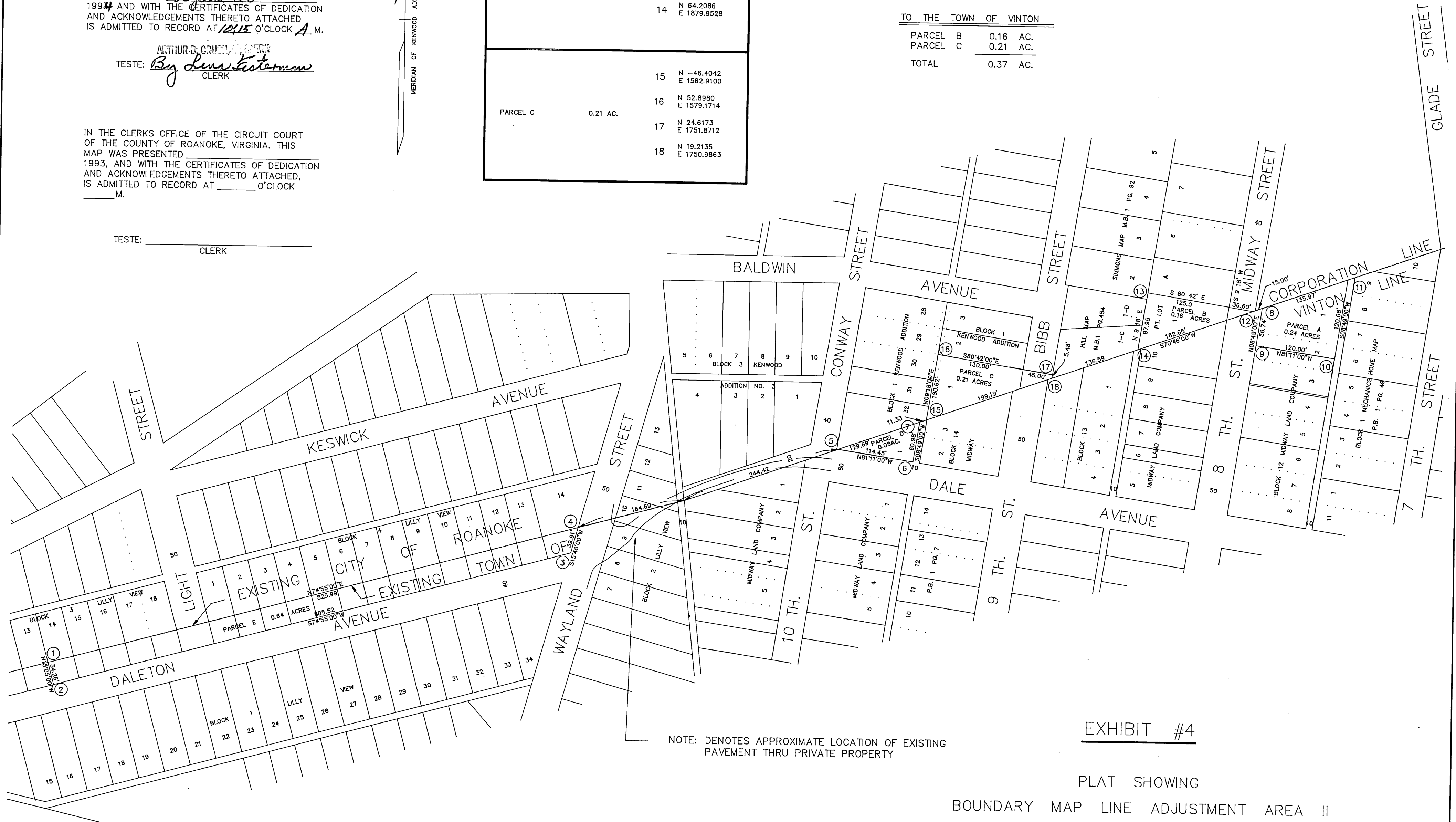


EXHIBIT #4

PLAT SHOWING
BOUNDARY MAP LINE ADJUSTMENT AREA II
BETWEEN
THE CITY OF ROANOKE, THE TOWN OF VINTON
AND THE COUNTY OF ROANOKE

LEGEND :
----- EXIST. BOUNDARY LINE
———— PROPOSED BOUNDARY LINE

DATE MARCH 1, 1993

SCALE 1" = 100'

SEE D.B. 1708 PG. 1835
FOR COURT DECREE
EFFECTIVE JAN. 1994

MAP PREPARED BY THE OFFICE OF THE
CITY ENGINEER, CITY OF ROANOKE VA.