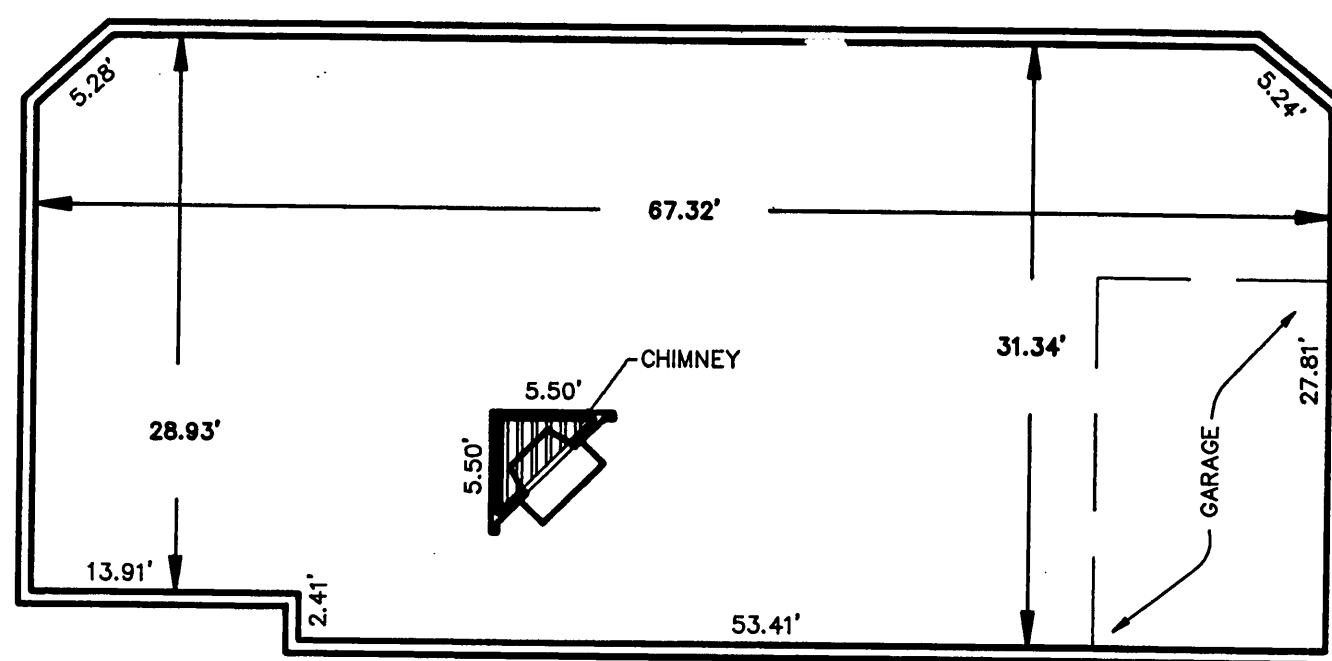


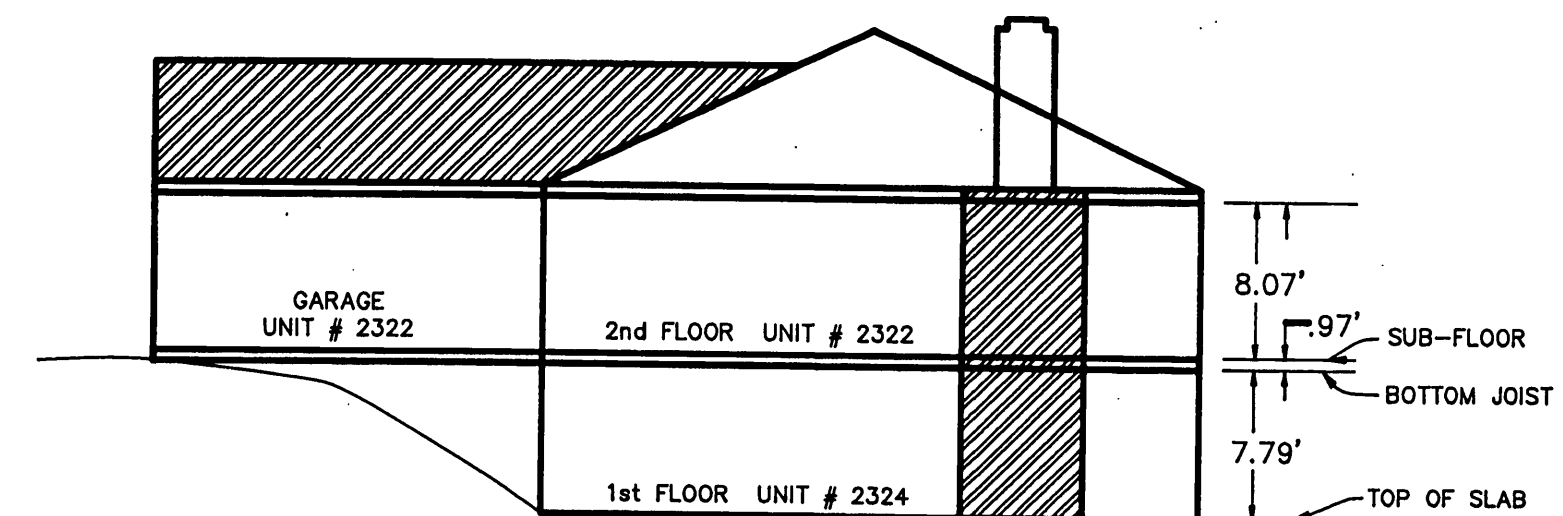
## SECOND FLOOR ↑ FRONT

UNIT #2322  
2465 SQ. FT. INCLUDES GARAGE



## FIRST FLOOR ↑ FRONT

UNIT #2324  
2048 SQ. FT. INCLUDES GARAGE



### LEFT SIDE

1st FLOOR ELEVATION  
SUB-FLOOR ELEVATION  
UNIT #2324 - 1028.67'

### LEGEND

- LIMITED COMMON AREA
- GENERAL COMMON AREA
- ORIENTATION FOR PLAN VIEW
- VERTICAL DATUM U.S.G.S. MEAN SEA LEVEL
- 4000 SQUARE FEET AREA OF UNIT

### NOTES:

1. INCLUDED AS PART OF EACH UNIT IS THE DRY WALL COVERING ENCLOSING SUCH UNIT. ALL INTERIOR DIMENSIONS SHOWN ON THIS PLAN ARE MEASURED TO THE INSIDE FACE OF STUBS OR TO THE INSIDE FACE OF CONCRETE FOUNDATION WALLS.
2. SQUARE FOOTAGE SHOWN DOES NOT INCLUDE AREA FOR FIREPLACE, PATIOS, BALCONIES OR STORAGE ROOMS.
3. ALL VERTICAL DIMENSIONS ARE MEASURED FROM SUB-FLOOR TO BOTTOM OF JOISTS.
4. UNIT DIMENSIONS SHOWN ARE TYPICAL AND ARE BASED UPON THE MEDIAN OF FIELD MEASUREMENTS OF ALL UNITS. SUBSTANTIALLY ALL DIMENSIONS FALL WITHIN A TOLERANCE OF 0.08 FEET OF THOSE SHOWN.
5. UNIT FLOOR AREAS ARE BASED ON THE BUILDING PLANS AND ARE WITHIN ONE PERCENT OF THE ACTUAL FLOOR AREAS.

### ENGINEER'S CERTIFICATE

I, B. LEE HENDERSON, JR., A REGISTERED ENGINEER IN THE COMMONWEALTH OF VIRGINIA, HEREBY CERTIFY THAT THIS PLAN, EXHIBIT "A", ACCURATELY SHOWS THE UNITS DELINEATED AND COMPLIES WITH THE PROVISIONS OF SECTION 55-79.58 PARAGRAPH (B) OF THE CONDOMINIUM ACT. I FURTHER CERTIFY THAT UNLESS NOTED OTHERWISE ALL UNITS DEPICTED HEREON HAVE BEEN SUBSTANTIALLY COMPLETED.

GIVEN UNDER MY HAND THIS 19th DAY OF OCT, 1994.

*B. Lee Henderson, Jr.*  
B. LEE HENDERSON, JR., P.E.

### EXHIBIT "A"

## THE DORCHESTER CONDOMINIUM

PROPERTY OF

ROY C. KINSEY III

SITUATED ALONG AT THE INTERSECTION  
OF BROADWAY, S.W. & LONGVIEW AVE., S.W.  
ROANOKE, VIRGINIA

SCALE: 1" = 10' DATE: 19 SEPTEMBER 1994

LUMSDEN ASSOCIATES, P.C.  
ENGINEERS - SURVEYORS - PLANNERS  
ROANOKE, VIRGINIA

COMM. #94-360

