

KNOW ALL MEN BY THESE PRESENT TO WIT:

THAT JARRETT ELECTRIC CO., INC. IS THE FEE SIMPLE OWNER OF THE LAND SHOWN HEREON BOUNDED BY CORNERS 1 THRU 6 TO 1, INCLUSIVE, AND IS ALL OF THE LAND CONVEYED TO SAID OWNER BY DEED RECORDED IN THE CLERK'S OFFICE OF THE CIRCUIT COURT OF THE CITY OF ROANOKE, VIRGINIA IN DEED BOOK 1721, PAGE 1668.

THE ABOVE DESCRIBED OWNER BY VIRTUE OF THE RECORDATION OF THIS PLAT HEREBY VACATES THE ALLEYS AND LOT LINES AS SHOWN ON THIS PLAT, AND HEREBY DEDICATES, IN FEE SIMPLE, 0.016 ACRE FOR A TURN-A-ROUND.

THE PLATTING AND VACATION OF THE ALLEYS AND LOT LINES OF THE LAND SHOWN HEREON IS WITH THE FREE CONSENT AND IN ACCORDANCE WITH THE DESIRE OF THE UNDERSIGNED OWNER AS REQUIRED BY SECTION 15.1-465 THROUGH 15.1-485 OF THE CODE OF VIRGINIA (1950) AS AMENDED, AND THE SUBDIVISION ORDINANCE OF THE CITY OF ROANOKE, VIRGINIA.

IN WITNESS WHEREON ARE HEREBY PLACED THE FOLLOWING SIGNATURES AND SEALS:

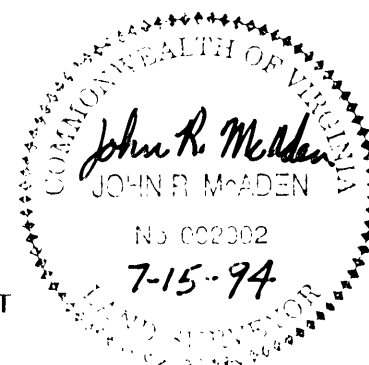
JARRETT ELECTRIC CO., INC.

BY: John R. McAden, ITS Agent

STATE OF VIRGINIA
COMMONWEALTH AT LARGE

John R. McAden, A NOTARY PUBLIC IN AND FOR THE AFORESAID STATE, DO HEREBY CERTIFY THAT John R. McAden, WHOSE NAME IS SIGNED TO THE FOREGOING INSTRUMENT, HAS PERSONALLY APPEARED BEFORE ME AND ACKNOWLEDGE THE SAME ON THIS 15 DAY OF July, 1994.

NOTARY PUBLIC MY COMMISSION EXPIRES 7-15-94



I HEREBY CERTIFY THAT THIS PLAT IS FROM A CURRENT FIELD SURVEY AND IS CORRECT TO THE BEST OF MY KNOWLEDGE AND BELIEF.

John R. McAden
JOHN R. McADEN 2002

APPROVED: John R. McAden
CITY ENGINEER, CITY OF ROANOKE DATE 7/15/94
John R. McAden
AGENT, CITY OF ROANOKE PLANNING COMMISSION DATE 7/15/94

IN THE CLERK'S OFFICE FOR THE CIRCUIT COURT OF ROANOKE, VIRGINIA THIS MAP WAS PRESENTED AND WITH THE CERTIFICATE OF ACKNOWLEDGEMENT THERETO ANNEXED, ADMITTED TO RECORD AT 10:00 O'CLOCK AM ON THIS 3 DAY OF July, 1994, IN MAP BOOK 1, PAGE 1.

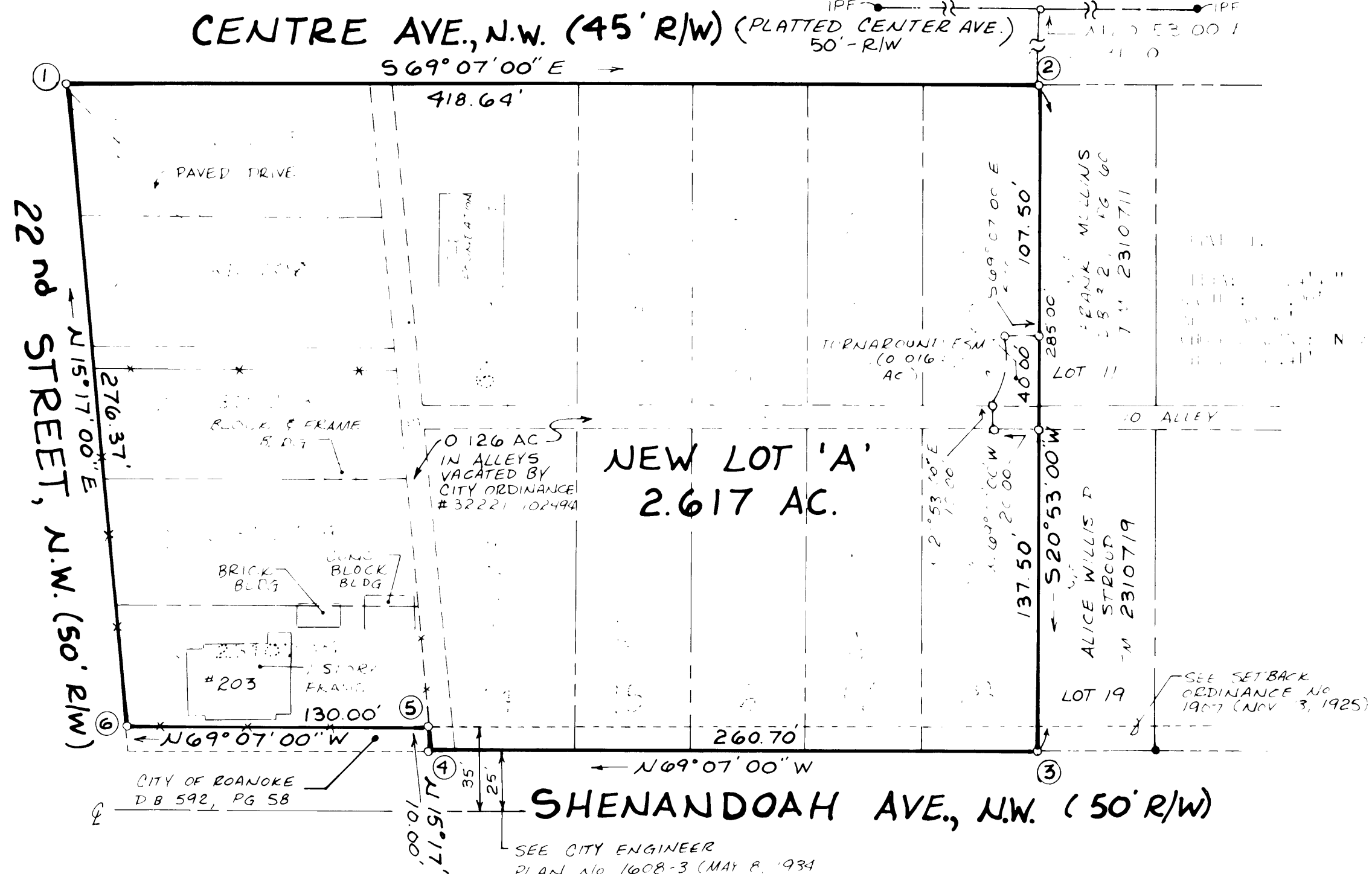
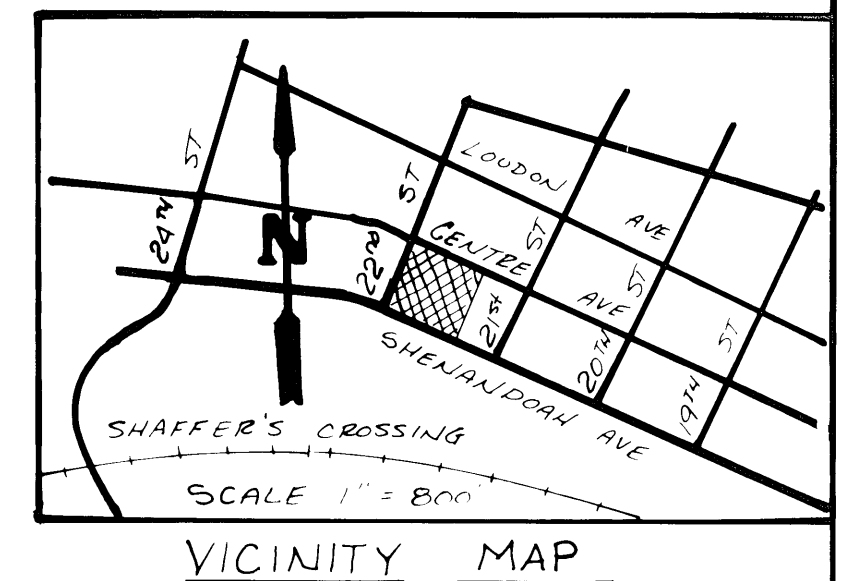
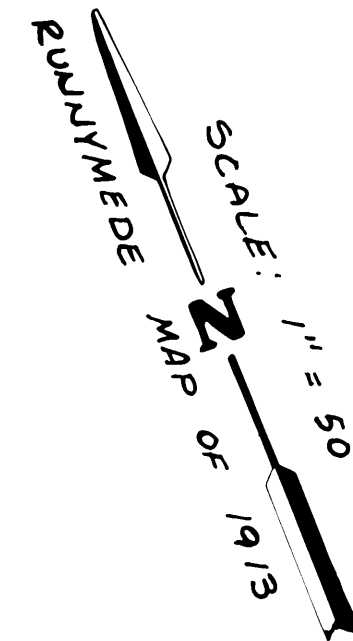
TESTE:
CLERK
DEPUTY CLERK

NOTES

1. CURRENT OWNER: JARRETT ELECTRIC CO., INC.
2. LEGAL REFERENCE: DEED BOOK 1721, PAGE 1668
3. NO TITLE REPORT FURNISHED.
4. PROPERTY IS IN F.E.M.A. DEFINED UNSHADED ZONE X AS SHOWN ON MAP NUMBER 51161C0042D, EFFECTIVE DATE - OCTOBER 15, 1993.
5. PROPERTY IS CURRENTLY ZONED LM.
6. AN EASEMENT IS GRANTED TO ALL EXISTING UTILITIES CURRENTLY IN USE FOR THE USE AND MAINTENANCE OF SAID UTILITIES IN HEREBY VACATED ALLEYS.

COORDINATE LIST		
	NORTHING	EASTING
1	2,410.9441	3,708.6837
2	2,261.7129	4,099.8250
3	1,995.4351	3,998.2321
4	2,088.3651	3,754.6598
5	2,098.0115	3,757.2958
6	2,144.3521	3,635.8357
1	2,410.9441	3,708.6837

THIS ORIGINAL SCALE PLAT HAS NOT BEEN REDUCED.



LEGEND	
○	IRON PIN SET
●	IRON PIN FOUND

NEW LOT 'A'		
TAX MAP NUMBERS	LEGAL DESCRIPTION	LEGAL REFERENCES
2310701	LOT 1, SECTION 2, RUNNYMEDE CORPORATION, INC.	D.B. 1721, PG. 1668
2310702	LOT 2, SECTION 2, RUNNYMEDE CORPORATION, INC.	D.B. 1721, PG. 1668
2310703	LOT 3, SECTION 2, RUNNYMEDE CORPORATION, INC.	D.B. 1721, PG. 1668
2310704	LOT 4, SECTION 2, RUNNYMEDE CORPORATION, INC.	D.B. 1721, PG. 1668
2310705	LOT 5, SECTION 2, RUNNYMEDE CORPORATION, INC. EXCEPTING D.B. 592, PG. 58	D.B. 1721, PG. 1668
2310706	LOT 6, SECTION 2, RUNNYMEDE CORPORATION, INC.	D.B. 1721, PG. 1668
2310707	LOT 7, SECTION 2, RUNNYMEDE CORPORATION, INC.	D.B. 1721, PG. 1668
2310708	LOT 8, SECTION 2, RUNNYMEDE CORPORATION, INC.	D.B. 1721, PG. 1668
2310709	LOT 9, SECTION 2, RUNNYMEDE CORPORATION, INC.	D.B. 1721, PG. 1668
2310710	LOT 10, SECTION 2, RUNNYMEDE CORPORATION, INC.	D.B. 1721, PG. 1668
2310714	LOT 14, SECTION 2, RUNNYMEDE CORPORATION, INC.	D.B. 1721, PG. 1668
2310715	LOT 15, SECTION 2, RUNNYMEDE CORPORATION, INC.	D.B. 1721, PG. 1668
2310716	LOT 16, SECTION 2, RUNNYMEDE CORPORATION, INC.	D.B. 1721, PG. 1668
2310717	LOT 17, SECTION 2, RUNNYMEDE CORPORATION, INC.	D.B. 1721, PG. 1668
2310718	LOT 18, SECTION 2, RUNNYMEDE CORPORATION, INC.	D.B. 1721, PG. 1668

PLAT OF VACATION FOR
JARRETT ELECTRIC CO., INC.

SHOWING THE VACATION OF
LOTS 1 - 10 & 14 - 18 INCLUSIVE
SECTION 2
RUNNYMEDE CORPORATION, INC.
INCLUDING 0.126 ACRE IN ALLEYS
BY CITY ORDINANCE #32221-102494
PURSUANT TO SEC. 15.1-428(B), CODE OF VIRGINIA
CREATING HEREON
NEW LOT 'A' (2.617 ACRES)
SITUATED AT SHENANDOAH AVE., N.W. & 22ND STREET, N.W.
CITY OF ROANOKE, VIRGINIA
JULY 15, 1994
JOB NUMBER 9410011



PLANNERS ARCHITECTS ENGINEERS SURVEYORS
1208 CORPORATE CIRCLE, ROANOKE, VIRGINIA 24011

