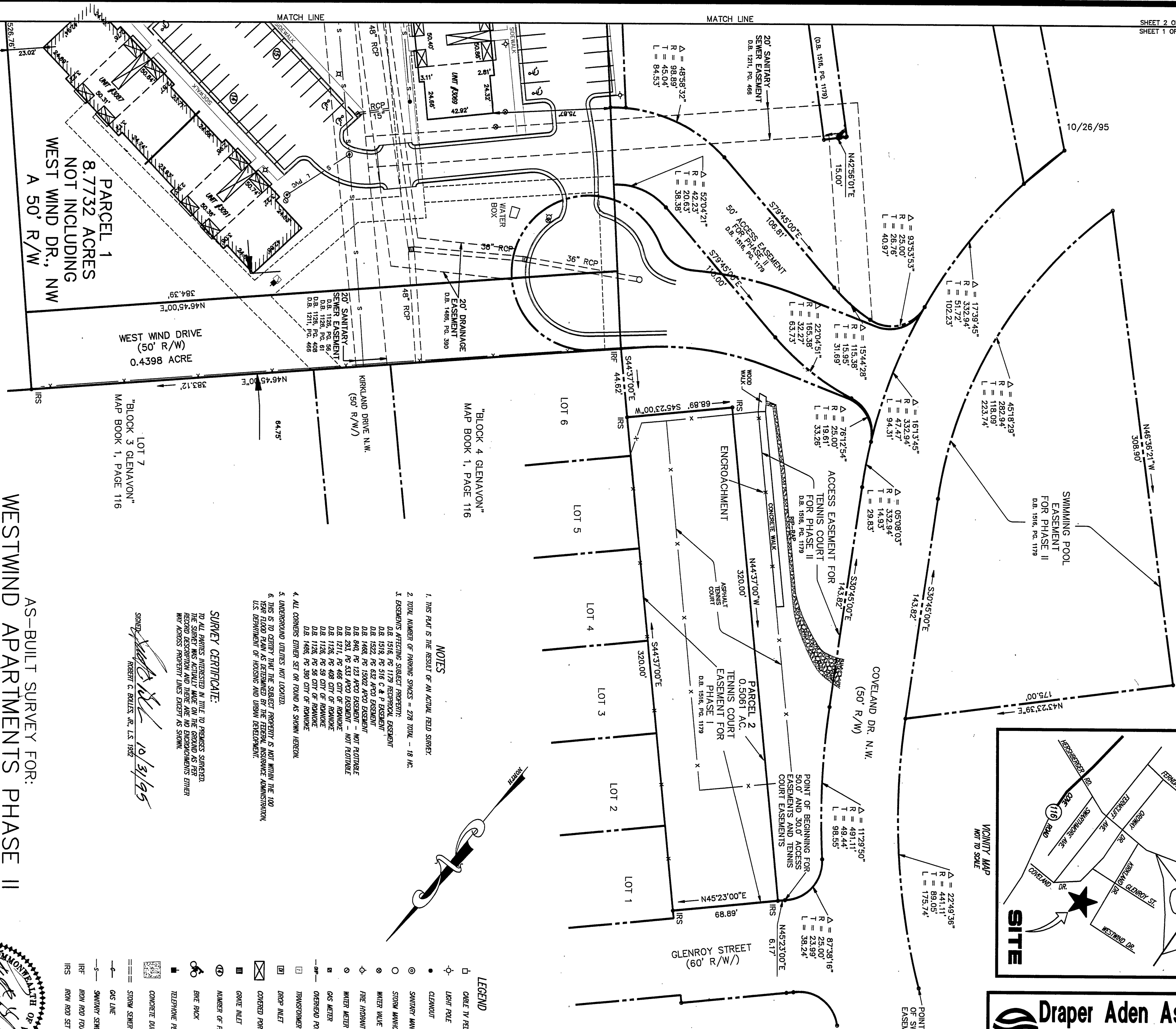


Draper Aden Associates
CONSULTING ENGINEERS/SURVEYOR
2206 SOUTH MAIN STREET
BLACKSBURG, VIRGINIA 24060

REVISIONS:	10/26/95	DATE: 10/15/95	SCALE: 1" = 40'
		DRAWN: TLH	CHECKED: RCB
PROJECT No. P-7310			



NOTES

1. THIS PLAN IS THE RESULT OF AN ACTUAL FIELD SURVEY.
2. TOTAL NUMBER OF PARKING SPACES = 278 TOTAL - 18 IN.
3. EASEMENTS AFFECTING SUBJECT PROPERTY:
 - D.B. 1516, PG. 1179 RECREATION EASEMENT
 - D.B. 1516, PG. 516 C & P EASEMENT
 - D.B. 1522, PG. 632 AFO EASEMENT
 - D.B. 1468, PG. 1500 AFO EASEMENT - NOT FLOUTABLE
 - D.B. 840, PG. 123 AFO EASEMENT - NOT FLOUTABLE
 - D.B. 233, PG. 533 AFO EASEMENT - NOT FLOUTABLE
 - D.B. 1211, PG. 468 CITY OF ROANOKE
 - D.B. 1128, PG. 92 CITY OF ROANOKE
 - D.B. 1128, PG. 96 CITY OF ROANOKE
 - D.B. 1468, PG. 390 CITY OF ROANOKE
4. ALL CORNERS EITHER SET OR FOUND AS SHOWN HEREON.
5. UNDERGROUND UTILITIES NOT LOCATED.
6. THIS IS TO CERTIFY THAT THE SUBJECT PROPERTY IS NOT WITHIN THE 100 YEAR FLOOD PLAIN AS DETERMINED BY THE FEDERAL INSURANCE ADMINISTRATION, U.S. DEPARTMENT OF HOUSING AND URBAN DEVELOPMENT.

SURVEY CERTIFICATE:

TO ALL PARTIES INTERESTED IN TITLE TO PREMISES SURVEYED, THE SURVEY WAS ACTUALLY MADE ON THE GROUND AS PER RECORD DESCRIPTION AND THERE ARE NO ENCROACHMENTS EITHER WITHIN OR ADJACENT TO THE SURVEYED PREMISES AS SHOWN.

SIGNED: *Robert C. Bolles, Jr.* 10/31/95

ROBERT C. BOLLES, JR., L.S. 1992

AS-BUILT SURVEY FOR:
WESTWIND APARTMENTS PHASE II

LOCATED IN
CITY OF ROANOKE, VIRGINIA

IN THE CLERK'S OFFICE OF THE CIRCUIT COURT, CITY OF ROANOKE, VA THIS PLAT WAS PRESENTED ON THIS 31 DAY OF OCTOBER, 1995 AND WITH THE CERTIFICATE OF ACKNOWLEDGEMENT THEREON ANNEXED TO RECORD AT 9:05 AM.

TESTEE: MICHAEL B. CLASH, III
By: *Robert C. Bolles, Jr.* Deputy Clerk



- LEGEND
- CABLE TV FEEDSTOCK
 - LIGHT POLE
 - CLEAVOUT
 - SANITARY MANHOLE
 - STORM MANHOLE
 - WATER VALVE
 - FIRE HYDRANT
 - WATER METER
 - GAS METER
 - OVERHEAD POWER
 - TRANSFORMER PAD
 - DROP INLET
 - COVERED PORCH
 - GRATE INLET
 - ① NUMBER OF PARKING SPACES
 - BUREAU
 - TELEPHONE FEEDSTOCK
 - CONCRETE DRAINAGE PAD
 - STORM SEWER PIPE
 - GAS LINE
 - SANITARY SEWER PIPE
 - IRF IRON ROD FOUND
 - IRS IRON ROD SET

