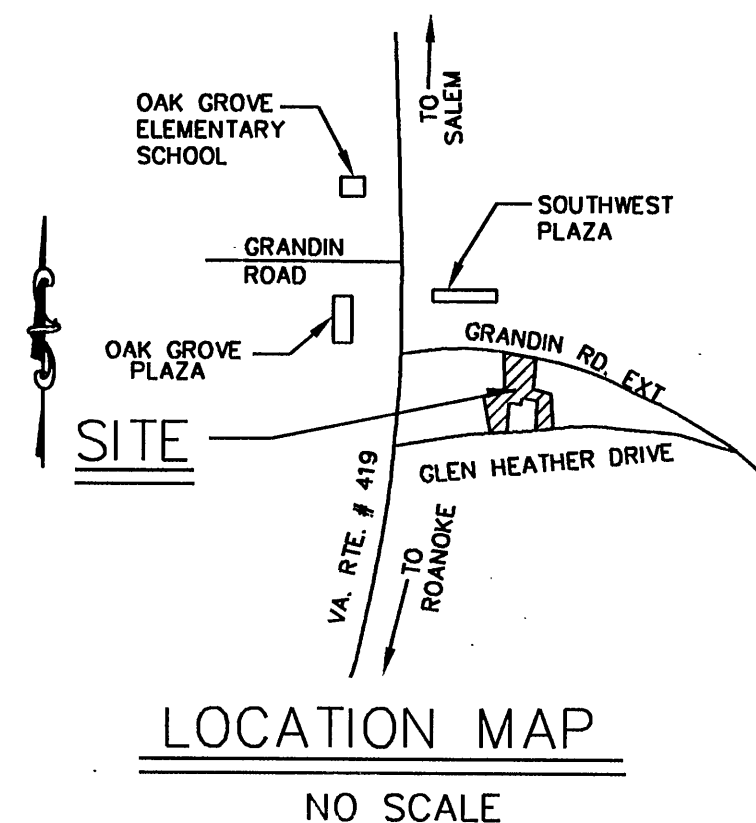


GENERAL NOTES:

1. THIS PROPERTY AS SHOWN HEREON, BEING PHASE IV, DOES NOT FALL WITHIN THE LIMITS OF A 100 YEAR FLOOD BOUNDARY AS DESIGNATED BY FEMA. THIS OPINION IS BASED ON AN INSPECTION OF THE FLOOD INSURANCE RATE MAP AND HAS BEEN VERIFIED BY ACTUAL FIELD ELEVATIONS. FLOOD ZONE "X".
2. FOR INTERIOR DIMENSIONS & ENGINEER'S CERTIFICATION OF BUILDINGS, SEE SHEET 2 OF 3 AND 3 OF 3.
3. SUBJECT TO ALL EASEMENTS, RESERVATIONS, CONDITIONS AND RIGHTS SET FORTH IN THE DECLARATION OF CONDOMINIUM AND BY LAWS RECORDED IN THE CLERK'S OFFICE OF THE CIRCUIT COURT OF THE CITY OF ROANOKE.
4. THIS SURVEY WAS PREPARED WITHOUT THE BENEFIT OF A CURRENT TITLE REPORT AND THERE MAY EXIST ENCUMBRANCES NOT SHOWN HEREON.
5. LEGAL REFERENCES:
"GLEN IVY", A CONDOMINIUM, PROPERTY OF RADFORD & COMPANY, A VIRGINIA CORPORATION, D.B. 1726, PAGE 498, D.B. 1740 PAGE 330, D.B. 1735, PG. 11, AND PROPERTY OF GLEN ASSOCIATES, D.B. 1598, PG. 451.
6. IRON PINS WERE FOUND AT ALL CORNERS UNLESS DENOTED OTHERWISE.
7. UNITS 1 THROUGH 6 ARE NOT YET BEGUN AND UNITS 8 & 9 ARE NOT YET COMPLETED. UNITS 7 & 10 ARE SUBSTANTIALLY COMPLETE.

LEGEND	
	LIMITED COMMON AREA
	GENERAL COMMON AREA
	ORIENTATION FOR PLAN VIEW
M.B.L.	MINIMUM BUILDING LINE
P.U.E.	PUBLIC UTILITY EASEMENT
S.S.E.	SANITARY SEWER EASEMENT
D.B.	DEED BOOK
P.B.	PLAT BOOK
PG.	PAGE
M.B.	MAP BOOK
*	LAMP POST

CURVE TABLE						
CURVE	RADIUS	LENGTH	TANGENT	CHORD	BEARING	DELTA
C-1	468.22'	96.81'	48.58'	96.64'	S56°46'46"W	11°50'48"
C-2	427.35'	201.68'	102.75'	199.81'	S66°10'51"W	27°02'22"

**SURVEYORS CERTIFICATE**

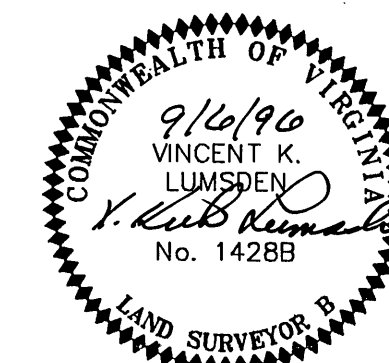
I HEREBY CERTIFY THIS PLAT AND PLAN OF CONDOMINIUM SUBDIVISION CONSISTING OF 3 SHEETS, IS CORRECT, THAT IT IS A SUBDIVISION OF LAND AND BUILDINGS ENTITLED "PHASE IV, GLEN IVY", A CONDOMINIUM RECORDED AMONG THE LAND RECORDS OF CITY OF ROANOKE, VIRGINIA IN D.B. _____, PAGE _____ AND THAT THE IMPROVEMENTS LOCATED THEREON CONSISTING OF TWO (2) BUILDINGS CONTAINING 10 UNITS AND FURTHER THAT IT HAS BEEN PREPARED PURSUANT TO AND IN COMPLIANCE WITH THE REQUIREMENTS AND PROVISIONS OF CHAPTER 4.2 IN TITLE 55-79.58 (c) OF THE CODE OF VIRGINIA OF 1950, AS AMENDED, I.E., "THE DECLARATION OF CONDOMINIUM ACT."

I FURTHER CERTIFY THAT THE LOCATION AND DIMENSIONS OF ALL EXISTING IMPROVEMENTS HAVE BEEN CAREFULLY ESTABLISHED BY A TRANSIT TAPE SURVEY AND THAT, UNLESS OTHERWISE SHOWN, THERE ARE NO VISIBLE ENCROACHMENTS.

I FURTHER CERTIFY THAT CONDOMINIUM UNITS, OR PORTIONS THEREOF, DEPICTED ON THIS PLAT AND PLAN OF CONDOMINIUM SUBDIVISION HAVE BEEN SUBSTANTIALLY COMPLETED AS NOTED HEREON. THE TOTAL AREA INCLUDED WITHIN THE BOUNDS OF "GLEN IVY", A CONDOMINIUM IS 7.542 ACRES.

V. Kirk Lumsden
V. KIRK LUMSDEN, L.S. No. 1428B

9/5/96
DATE



IN THE CLERK'S OFFICE OF THE CIRCUIT COURT OF ROANOKE, VIRGINIA THIS PLAT WAS PRESENTED ON THIS 6 DAY OF September 1996, AND WITH THE CERTIFICATE OF ACKNOWLEDGEMENT THERETO ANNEXED ADMITTED TO RECORD AT 3:45 O'CLOCK P.M.

TESTEE: Arthur B. Crush, III
ARTHUR B. CRUSH, III
CLERK

BY: Kathy J. Holladay
DEPUTY CLERK

PLAT OF
PHASE IV
UNITS 7 & 10
"GLEN IVY"
A CONDOMINIUM

PROPERTY OF
RADFORD & COMPANY

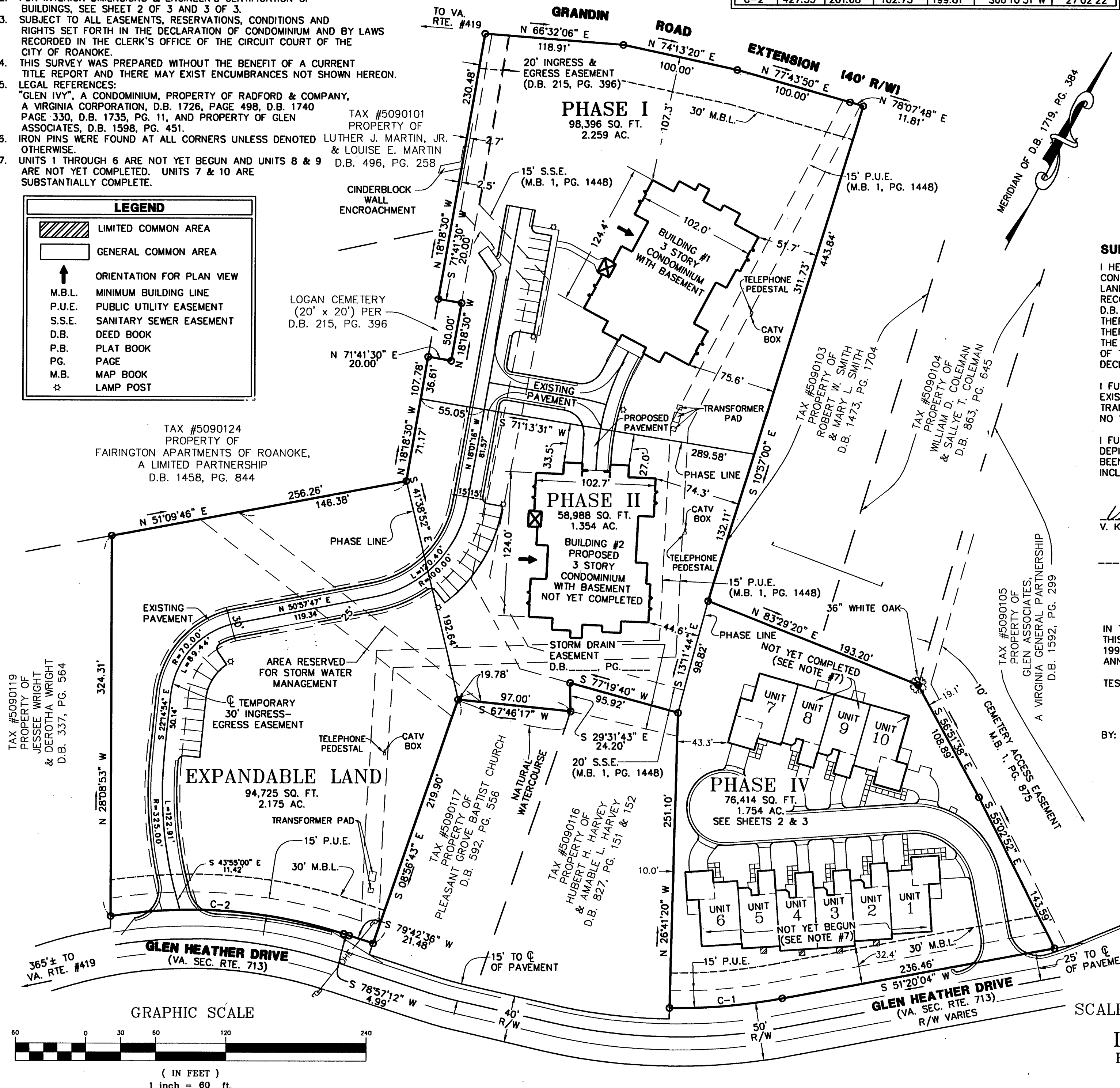
SITUATED ALONG GLEN HEATHER DRIVE
AND GRANDIN ROAD EXTENSION, S.W.
ROANOKE, VIRGINIA

SCALE: 1" = 60' DATE: 5 SEPTEMBER 1996

LUMSDEN ASSOCIATES, P.C.
ENGINEERS - SURVEYORS - PLANNERS
ROANOKE, VIRGINIA

COMM. #94-53

SHEET 1 OF 3



GRAPHIC SCALE



(IN FEET)
1 inch = 60 ft.