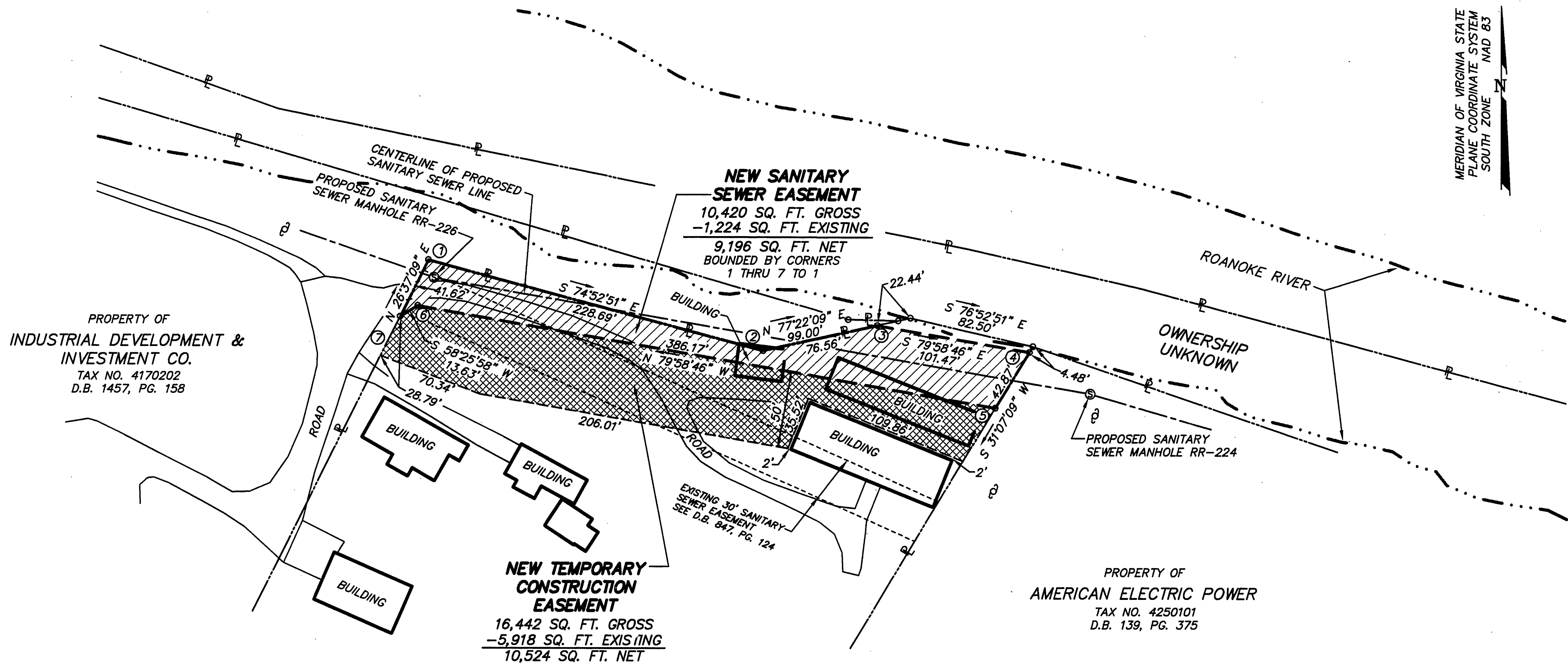


MERIDIAN OF VIRGINIA STATE  
PLANE COORDINATE SYSTEM  
SOUTH ZONE NAD 83



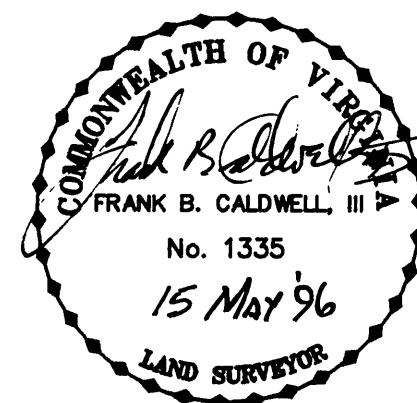
## NOTES:

1. THIS PLAT IS SUBJECT TO INFORMATION WHICH MAY BE DISCLOSED BY A TITLE REPORT BY A LICENSED ATTORNEY.
2. METES AND BOUNDS DESCRIPTIONS SHOWN HEREON REPRESENT A COMPOSITE OF DEEDS, PLATS, CALCULATED INFORMATION AND FIELD TIES TO PROPERTY BOUNDARIES TO LOCATE THE POSITION OF THE EASEMENT IN RELATION TO THE BOUNDARIES. THIS SURVEY DOES NOT REFLECT A COMPLETE AND ACCURATE BOUNDARY SURVEY OF THE SUBJECT PROPERTIES.

## APPROVED:

*Charles M. Haffline* 7-24-96  
CITY ENGINEER DATE  
ROANOKE, VIRGINIA

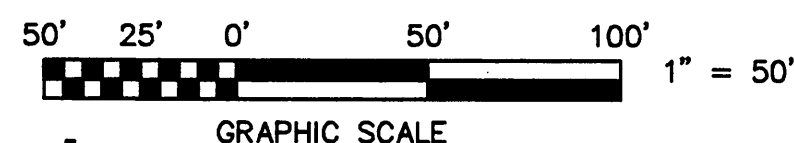
PROPERTY OF  
**JACOB A. & ELSIE P. WEBB**  
TAX NO. 4170301  
D.B. 1478, PG. 1226



IN THE CLERK'S OFFICE OF THE CIRCUIT COURT OF THE CITY OF ROANOKE,  
VIRGINIA THIS MAP WAS PRESENTED AND ADMITTED TO RECORD AT 8:44 O'CLOCK  
A.M. ON THIS 23 DAY OF September, 1996.

TESTE: ARTHUR B. CRUSH, III  
CLERK

BY: *Kathy McMillan*  
DEPUTY CLERK



EASEMENT PLAT FOR  
**CITY OF ROANOKE**  
SHOWING A NEW SANITARY SEWER EASEMENT AND  
TEMPORARY CONSTRUCTION EASEMENT BEING CONVEYED BY  
**JACOB A. & ELSIE P. WEBB**

ROANOKE, VIRGINIA

**T. P. PARKER & SON**  
ENGINEERS - SURVEYORS - PLANNERS

TAX NO.: 4170301  
DRAWN: DAP  
CALC.: DAP  
CITY PLAN #6312-G

SCALE: 1" = 50'  
MAY 14, 1996  
W.O.: 95-0024