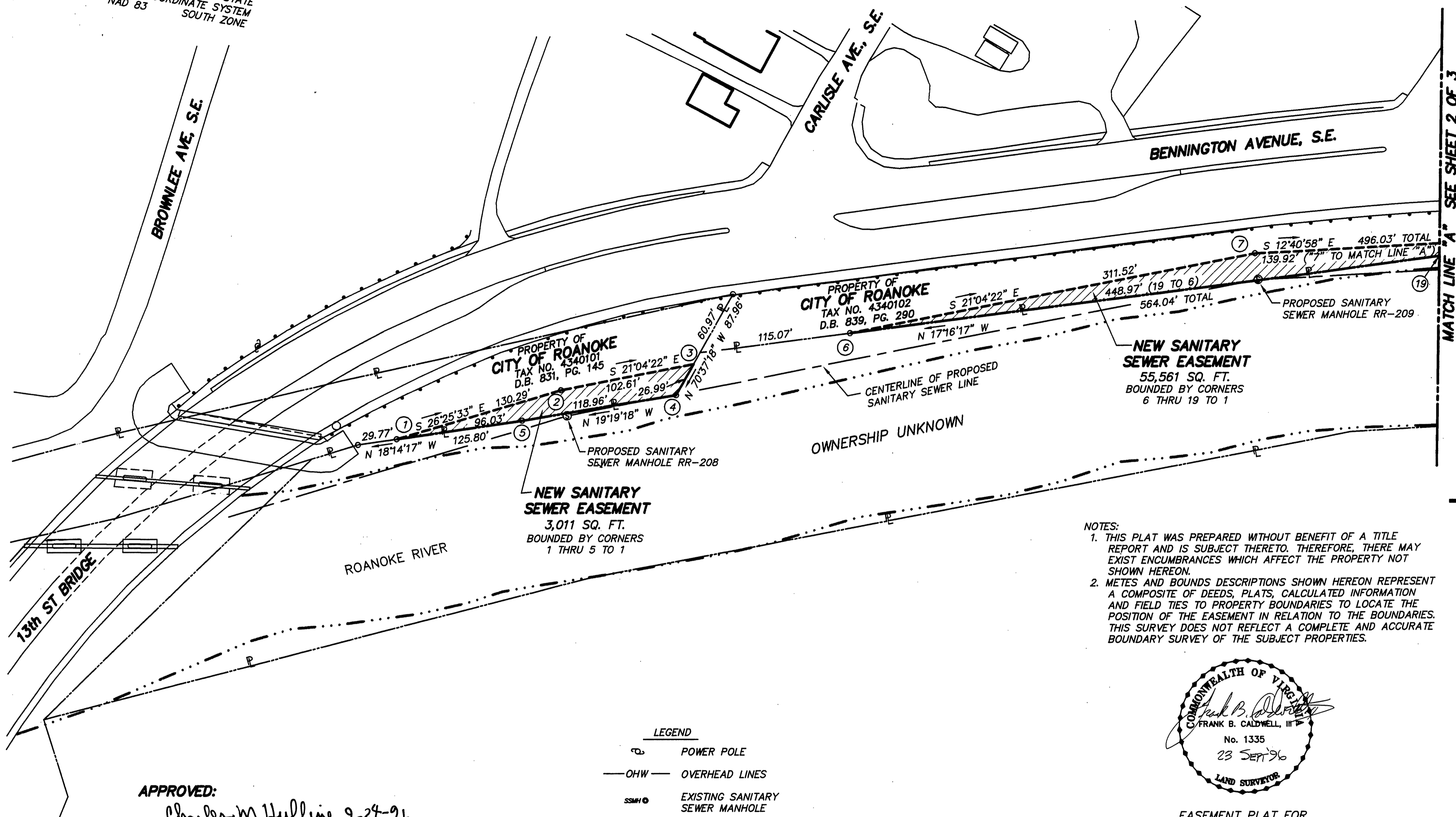


MERIDIAN OF VIRGINIA STATE
PLANE COORDINATE SYSTEM
NAD 83
SOUTH ZONE



APPROVED:

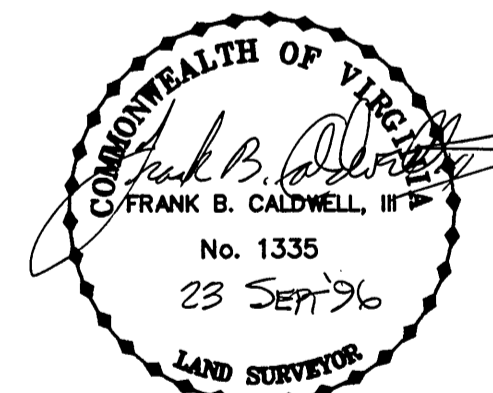
Charles M. Huffine 9-24-96
CITY ENGINEER
ROANOKE, VIRGINIA

LEGEND

- POWER POLE
- OVERHEAD LINES
- EXISTING SANITARY SEWER MANHOLE
- SANITARY SEWER LINE
- PROPERTY LINE
- NEW SEWER EASEMENT
- ELECTRIC TOWER

NOTES:

1. THIS PLAT WAS PREPARED WITHOUT BENEFIT OF A TITLE REPORT AND IS SUBJECT THERETO. THEREFORE, THERE MAY EXIST ENCUMBRANCES WHICH AFFECT THE PROPERTY NOT SHOWN HEREON.
2. METES AND BOUNDS DESCRIPTIONS SHOWN HEREON REPRESENT A COMPOSITE OF DEEDS, PLATS, CALCULATED INFORMATION AND FIELD TIES TO PROPERTY BOUNDARIES TO LOCATE THE POSITION OF THE EASEMENT IN RELATION TO THE BOUNDARIES. THIS SURVEY DOES NOT REFLECT A COMPLETE AND ACCURATE BOUNDARY SURVEY OF THE SUBJECT PROPERTIES.



EASEMENT PLAT FOR

CITY OF ROANOKE

SHOWING A NEW SANITARY SEWER EASEMENT
ACROSS PROPERTY OF
CITY OF ROANOKE

ROANOKE, VIRGINIA

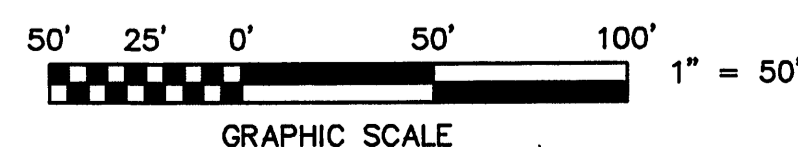
T. P. PARKER & SON

ENGINEERS - SURVEYORS - PLANNERS

TAX NO.: 4340101
4340102

SCALE: 1" = 50'
SEPTEMBER 13, 1996
W.O.: 95-0024

DRAWN: DAP
CALC.: DAP
CITY PLAN NO. 6312-DDDD



SHEET 1 OF 3
M.B. 1 PG. 1565

IN THE CLERK'S OFFICE OF THE CIRCUIT COURT OF THE CITY OF ROANOKE,
VIRGINIA THIS MAP WAS PRESENTED AND ADMITTED TO RECORD AT 2:01 O'CLOCK
A.M. ON THIS 3rd DAY OF October, 1996.

TESTE: ARTHUR B. CRUSH, III
CLERK

BY: *Kathy meridian*
DEPUTY CLERK