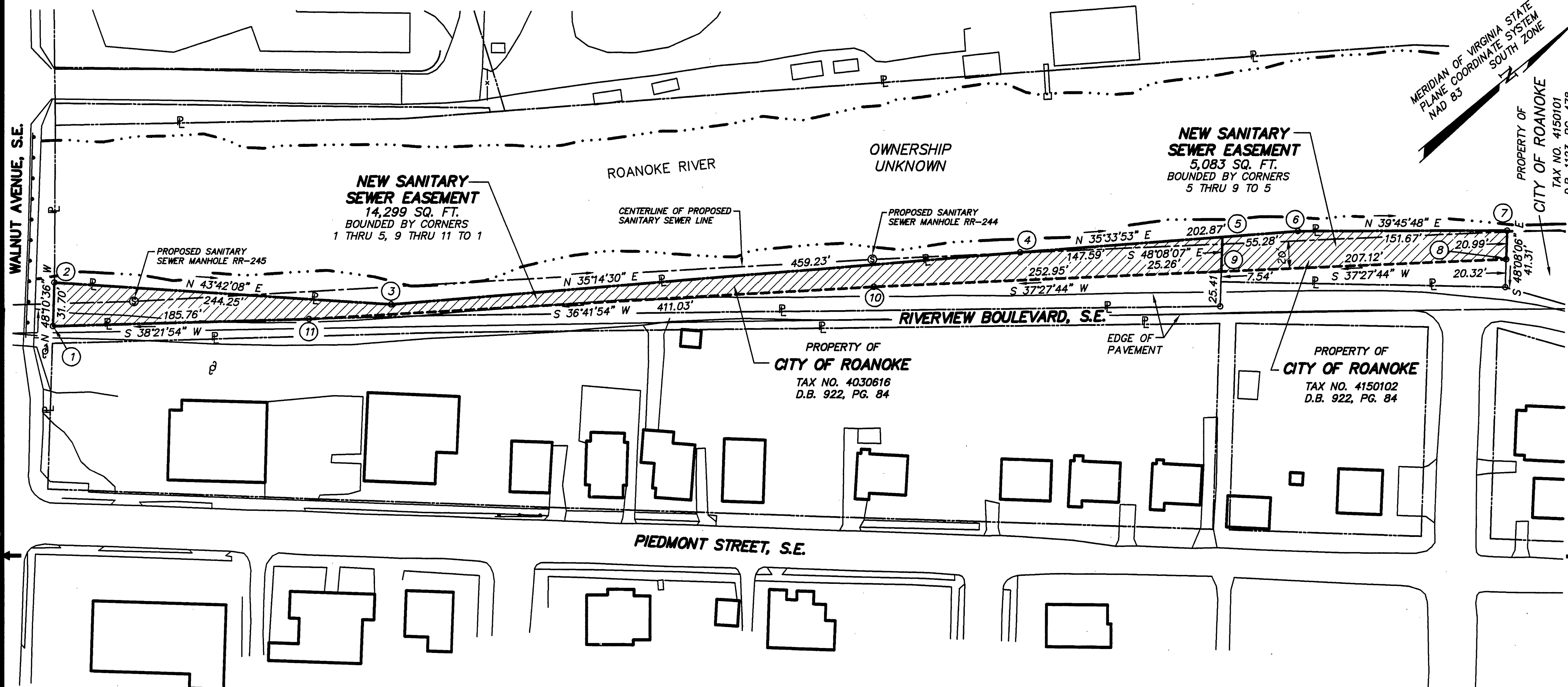


MERIDIAN OF VIRGINIA STATE
PLANE COORDINATE SYSTEM
NAD 83
PROPERTY OF
CITY OF ROANOKE
TAX NO. 4150101
D.B. 1123, PG. 478



LEGEND

- POWER POLE
- OHW — OVERHEAD LINES
- SS — EXISTING SANITARY SEWER MANHOLE
- SS — SANITARY SEWER LINE
- P — PROPERTY LINE
- ▨ NEW SEWER EASEMENT
- ⊠ ELECTRIC TOWER

APPROVED:

Charles M. Huffine 9-24-96
CITY ENGINEER DATE
ROANOKE, VIRGINIA

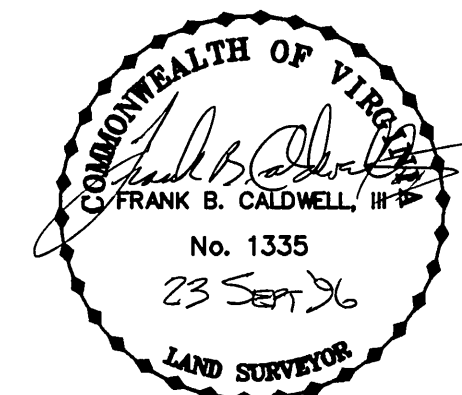
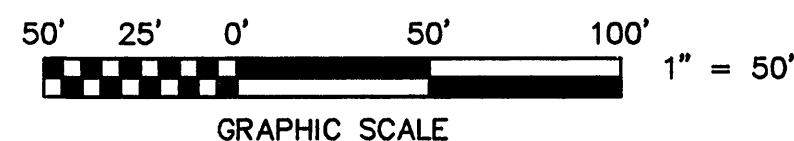
NOTES:

1. THIS PLAT WAS PREPARED WITHOUT BENEFIT OF A TITLE REPORT AND IS SUBJECT THERETO. THEREFORE, THERE MAY EXIST ENCUMBRANCES WHICH AFFECT THE PROPERTY NOT SHOWN HEREON.
2. METES AND BOUNDS DESCRIPTIONS SHOWN HEREON REPRESENT A COMPOSITE OF DEEDS, PLATS, CALCULATED INFORMATION AND FIELD TIES TO PROPERTY BOUNDARIES TO LOCATE THE POSITION OF THE EASEMENT IN RELATION TO THE BOUNDARIES. THIS SURVEY DOES NOT REFLECT A COMPLETE AND ACCURATE BOUNDARY SURVEY OF THE SUBJECT PROPERTIES.

IN THE CLERK'S OFFICE OF THE CIRCUIT COURT OF THE CITY OF ROANOKE, VIRGINIA THIS MAP WAS PRESENTED AND ADMITTED TO RECORD AT 8:00 O'CLOCK P.M. ON THIS 3rd DAY OF October, 1996.

TESTE: ARTHUR B. CRUSH, III
CLERK

BY: *Kathy McMillan*
DEPUTY CLERK



EASEMENT PLAT FOR
CITY OF ROANOKE
SHOWING A NEW SANITARY SEWER EASEMENT
ACROSS PROPERTY OF
CITY OF ROANOKE

ROANOKE, VIRGINIA

T. P. PARKER & SON
ENGINEERS - SURVEYORS - PLANNERS

TAX NO.: 415-0102
403-0616
DRAWN: DAP
CALC.: DAP
CITY PLAN NO. 6312-MMMM

SCALE: 1" = 50'
SEPTEMBER 13, 1996
W.O.: 95-0024