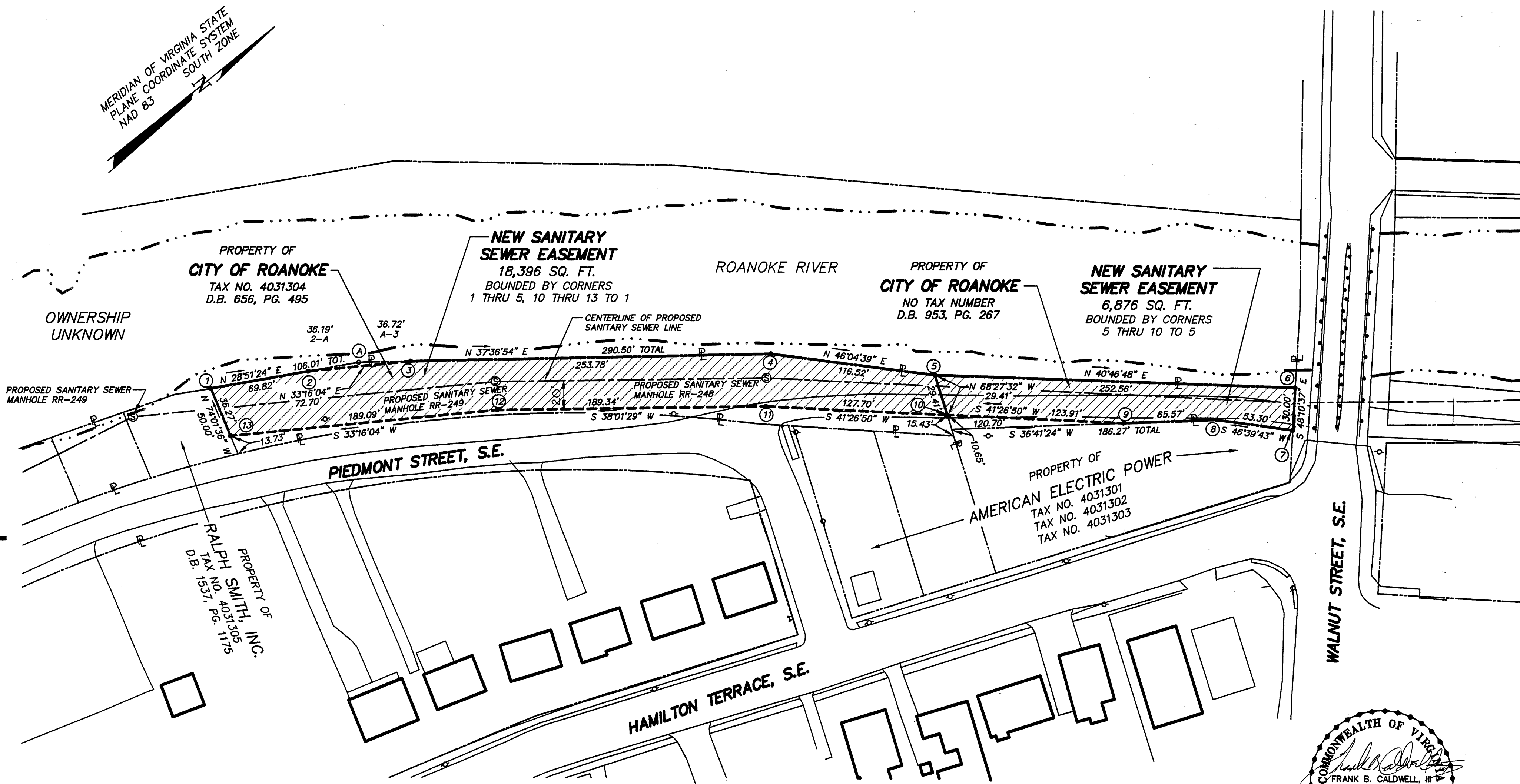


MERIDIAN OF VIRGINIA STATE  
PLANE COORDINATE SYSTEM  
NAD 83



## NOTES:

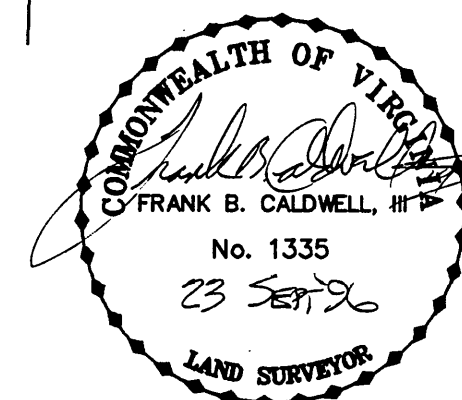
1. THIS PLAT WAS PREPARED WITHOUT BENEFIT OF A TITLE REPORT AND IS SUBJECT THERETO. THEREFORE, THERE MAY EXIST ENCUMBRANCES WHICH AFFECT THE PROPERTY NOT SHOWN HEREON.
2. METES AND BOUNDS DESCRIPTIONS SHOWN HEREON REPRESENT A COMPOSITE OF DEEDS, PLATS, CALCULATED INFORMATION AND FIELD TIES TO PROPERTY BOUNDARIES TO LOCATE THE POSITION OF THE EASEMENT IN RELATION TO THE BOUNDARIES. THIS SURVEY DOES NOT REFLECT A COMPLETE AND ACCURATE BOUNDARY SURVEY OF THE SUBJECT PROPERTIES.

APPROVED:

*Charles M. Huffine* 9-29-96  
CITY ENGINEER  
CITY OF ROANOKE

## LEGEND

- POWER POLE
- OHW — OVERHEAD LINES
- SS — EXISTING SANITARY SEWER MANHOLE
- SS — SANITARY SEWER LINE
- P — PROPERTY LINE
- NEW SEWER EASEMENT



EASEMENT PLAT FOR  
**CITY OF ROANOKE**  
SHOWING A NEW SANITARY SEWER EASEMENT  
ACROSS PROPERTY OF  
CITY OF ROANOKE  
ROANOKE, VIRGINIA

T. P. PARKER & SON  
ENGINEERS - SURVEYORS - PLANNERS

TAX NO.: NO NUMBER  
4031304  
DRAWN: DAP  
CALC.: DAP  
CITY PLAN NO. 6312-NNNN

SCALE: 1" = 50'  
SEPTEMBER 13, 1996  
W.O.: 95-0024

IN THE CLERK'S OFFICE OF THE CIRCUIT COURT OF THE CITY OF ROANOKE,  
VIRGINIA THIS MAP WAS PRESENTED AND ADMITTED TO RECORD AT 8:27 O'CLOCK  
A.M. ON THIS 3rd DAY OF October, 1996.

TESTE: ARTHUR B. CRUSH, III  
CLERK

BY: *Kathy McMillan*  
DEPUTY CLERK

