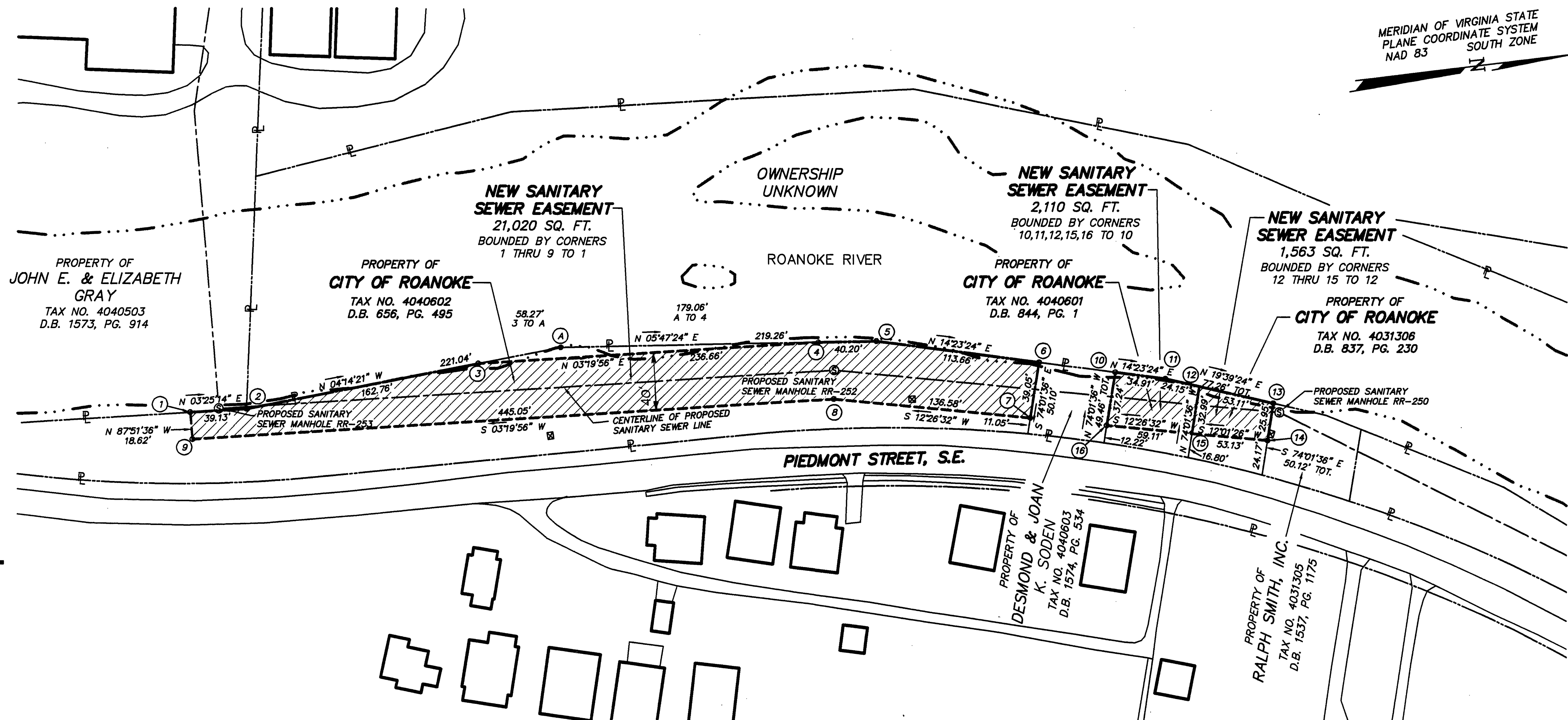


MERIDIAN OF VIRGINIA STATE
PLANE COORDINATE SYSTEM
NAD 83



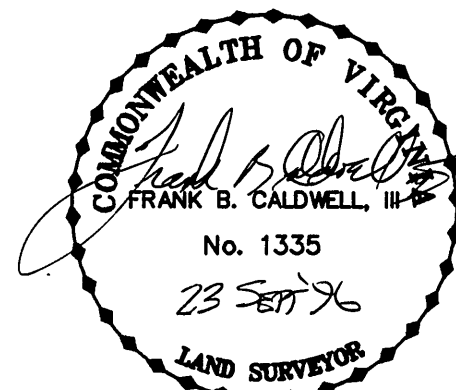
NOTES:

1. THIS PLAT WAS PREPARED WITHOUT BENEFIT OF A TITLE REPORT AND IS SUBJECT THERETO. THEREFORE, THERE MAY EXIST ENCUMBRANCES WHICH AFFECT THE PROPERTY NOT SHOWN HEREON.
2. METES AND BOUNDS DESCRIPTIONS SHOWN HEREON REPRESENT A COMPOSITE OF DEEDS, PLATS, CALCULATED INFORMATION AND FIELD TIES TO PROPERTY BOUNDARIES TO LOCATE THE POSITION OF THE EASEMENT IN RELATION TO THE BOUNDARIES. THIS SURVEY DOES NOT REFLECT A COMPLETE AND ACCURATE BOUNDARY SURVEY OF THE SUBJECT PROPERTIES.

APPROVED:
Charles M. Huffine 9-24-96
CITY ENGINEER
CITY OF ROANOKE

LEGEND

- P — POWER POLE
— OHW — OVERHEAD LINES
— SSMH — EXISTING SANITARY SEWER MANHOLE
— SS — SANITARY SEWER LINE
— P — PROPERTY LINE
— [Hatched Box] — NEW SEWER EASEMENT
— [Square with X] — ELECTRIC TOWER



EASEMENT PLAT FOR
CITY OF ROANOKE
SHOWING A NEW SANITARY SEWER EASEMENT
ACROSS PROPERTY OF
CITY OF ROANOKE

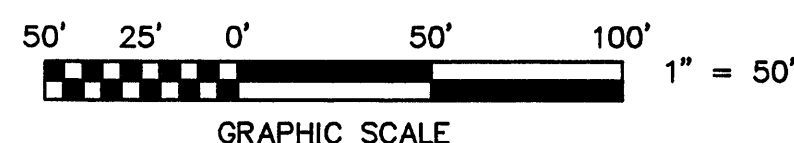
ROANOKE, VIRGINIA

T. P. PARKER & SON
ENGINEERS - SURVEYORS - PLANNERS

TAX NO.: 4031306
4040601
4040602

SCALE: 1" = 50'
SEPTEMBER 13, 1996
W.O.: 95-0024

DRAWN: DAP
CALC.: DAP
CITY PLAN NO. 6312-0000



IN THE CLERK'S OFFICE OF THE CIRCUIT COURT OF THE CITY OF ROANOKE,
VIRGINIA THIS MAP WAS PRESENTED AND ADMITTED TO RECORD AT 8:08 O'CLOCK
A.M. ON THIS 3rd DAY OF October, 1996.

TESTE: ARTHUR B. CRUSH, III
CLERK

BY: *Kathy McMiller*
DEPUTY CLERK