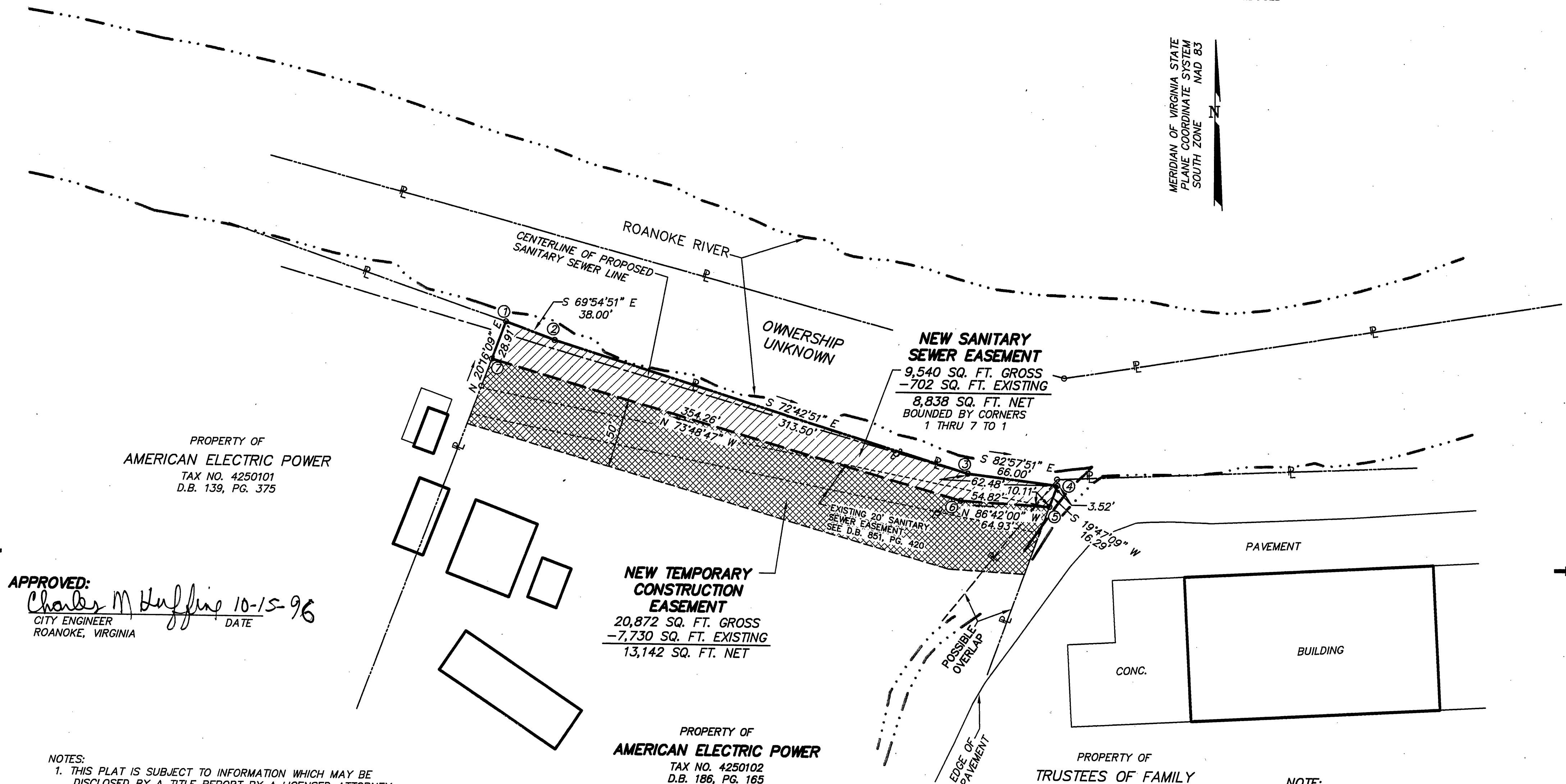


MERIDIAN OF VIRGINIA STATE
PLANE COORDINATE SYSTEM
SOUTH ZONE
NAD 83



PROPERTY OF
AMERICAN ELECTRIC POWER
TAX NO. 4250101
D.B. 139, PG. 375

APPROVED:
Charles M. Huffine 10-15-96
CITY ENGINEER
ROANOKE, VIRGINIA

NEW TEMPORARY
CONSTRUCTION
EASEMENT
20,872 SQ. FT. GROSS
-7,730 SQ. FT. EXISTING
13,142 SQ. FT. NET

PROPERTY OF
AMERICAN ELECTRIC POWER
TAX NO. 4250102
D.B. 186, PG. 165

PROPERTY OF
TRUSTEES OF FAMILY
BIBLE FELLOWSHIP
TAX NO. 4250105
D.B. 1673, PG. 311

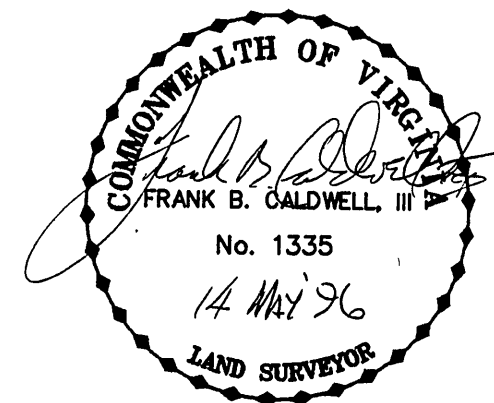
- NOTES:
1. THIS PLAT IS SUBJECT TO INFORMATION WHICH MAY BE DISCLOSED BY A TITLE REPORT BY A LICENSED ATTORNEY.
 2. METES AND BOUNDS DESCRIPTIONS SHOWN HEREON REPRESENT A COMPOSITE OF DEEDS, PLATS, CALCULATED INFORMATION AND FIELD TIES TO PROPERTY BOUNDARIES TO LOCATE THE POSITION OF THE EASEMENT IN RELATION TO THE BOUNDARIES. THIS SURVEY DOES NOT REFLECT A COMPLETE AND ACCURATE BOUNDARY SURVEY OF THE SUBJECT PROPERTIES.

IN THE CLERK'S OFFICE OF THE CIRCUIT COURT OF THE CITY OF ROANOKE, VIRGINIA THIS MAP WAS PRESENTED AND ADMITTED TO RECORD AT 2:04 O'CLOCK P.M. ON THIS 15th DAY OF OCTOBER, 1996.

TESTE: ARTHUR B. CRUSH, III
CLERK
BY: *Janita L. Caffo*
DEPUTY CLERK

LEGEND

- POWER POLE
- OHW — OVERHEAD LINES
- P — PROPERTY LINE
- ▨ NEW SEWER EASEMENT
- ▩ NEW TEMPORARY CONSTRUCTION ESM'T



NOTE:
WHEN RECORDED, THIS PLAT WILL
SUPERSEDE AND RENDER NULL AND
VOID THE PLAT FOR AMERICAN
ELECTRIC POWER DATED MAY 14, 1996
AND RECORDED IN M.B. 1, PG. 1552

EASEMENT PLAT FOR
CITY OF ROANOKE
SHOWING A NEW SANITARY SEWER EASEMENT
BEING CONVEYED BY

AMERICAN ELECTRIC POWER

ROANOKE, VIRGINIA

T. P. PARKER & SON
ENGINEERS - SURVEYORS - PLANNERS

TAX NO.: 4250102
DRAWN: DAP
CALC.: DAP
CITY PLAN #6312-F

SCALE: 1" = 50'
MAY 14, 1996
REVISED: OCTOBER 14, 1996
W.O.: 95-0024

