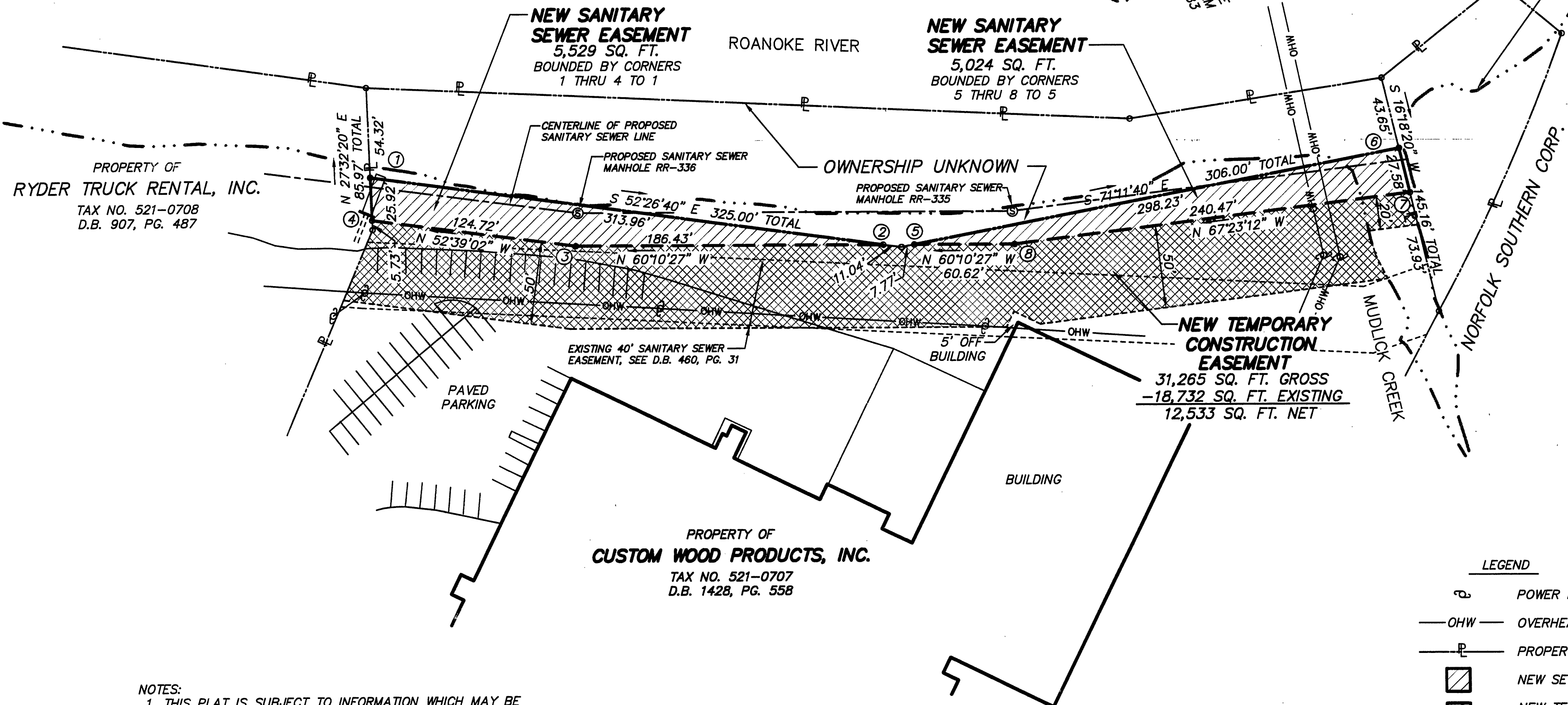


PROPERTY OF  
NORFOLK SOUTHERN CORP.  
TAX NO. 141-0103  
D.B. 90, PG. 254

PROPERTY OF  
J. GUY PERSINGER, ET ALS  
TAX NO. 161-0103  
D.B. Q, PG. 356

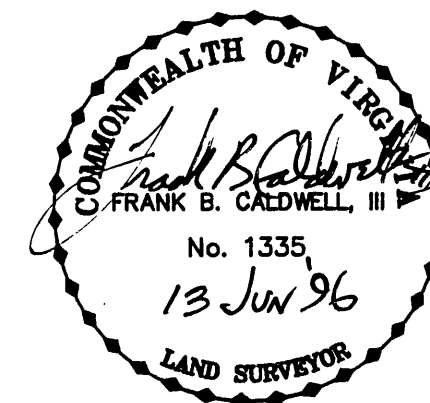


IN THE CLERK'S OFFICE OF THE CIRCUIT COURT OF THE CITY OF ROANOKE, VIRGINIA THIS MAP WAS PRESENTED AND ADMITTED TO RECORD AT 3:42 O'CLOCK P.M. ON THIS 14 DAY OF March, 1996.

TESTE: ARTHUR B. CRUSH, III  
CLERK

BY: Kathy M. Mullen  
DEPUTY CLERK

APPROVED:  
Charles M. Huffine 7-24-96  
CITY ENGINEER  
ROANOKE, VIRGINIA



EASEMENT PLAT FOR

## CITY OF ROANOKE

SHOWING A NEW SANITARY SEWER EASEMENT AND NEW TEMPORARY CONSTRUCTION EASEMENT BEING CONVEYED BY

CUSTOM WOOD PRODUCTS, INC.

T. P. PARKER & SON  
ENGINEERS - SURVEYORS - PLANNERS

TAX NO.: 521-0707  
DRAWN: DAP  
CALC.: DAP  
CITY PLAN #6312-X

SCALE: 1" = 50'  
MAY 31, 1996  
W.O.: 95-0024

