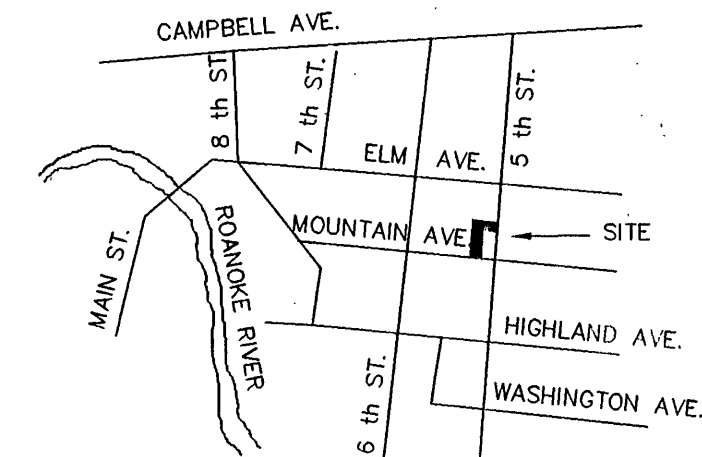


A circular seal with a scalloped border. The text "COMMONWEALTH OF VIRGINIA" is arched across the top. In the center, the name "John T. Parker" is written in cursive. Below the name, "JOHN T. PARKER" is printed in all caps, followed by "No. 1076". At the bottom, "Dec. 6, 1996" is written in cursive, and "LAND SURVEYOR" is printed in all caps.

- TPP&S**
ENGINEERS
SURVEYORS
PLANNERS
- T. P. PARKER & SON**
816 Boulevard
Post Office Box 39
Salem, Virginia 24153

AC = ACRE
S = STOOP
BLDG = BUILDING

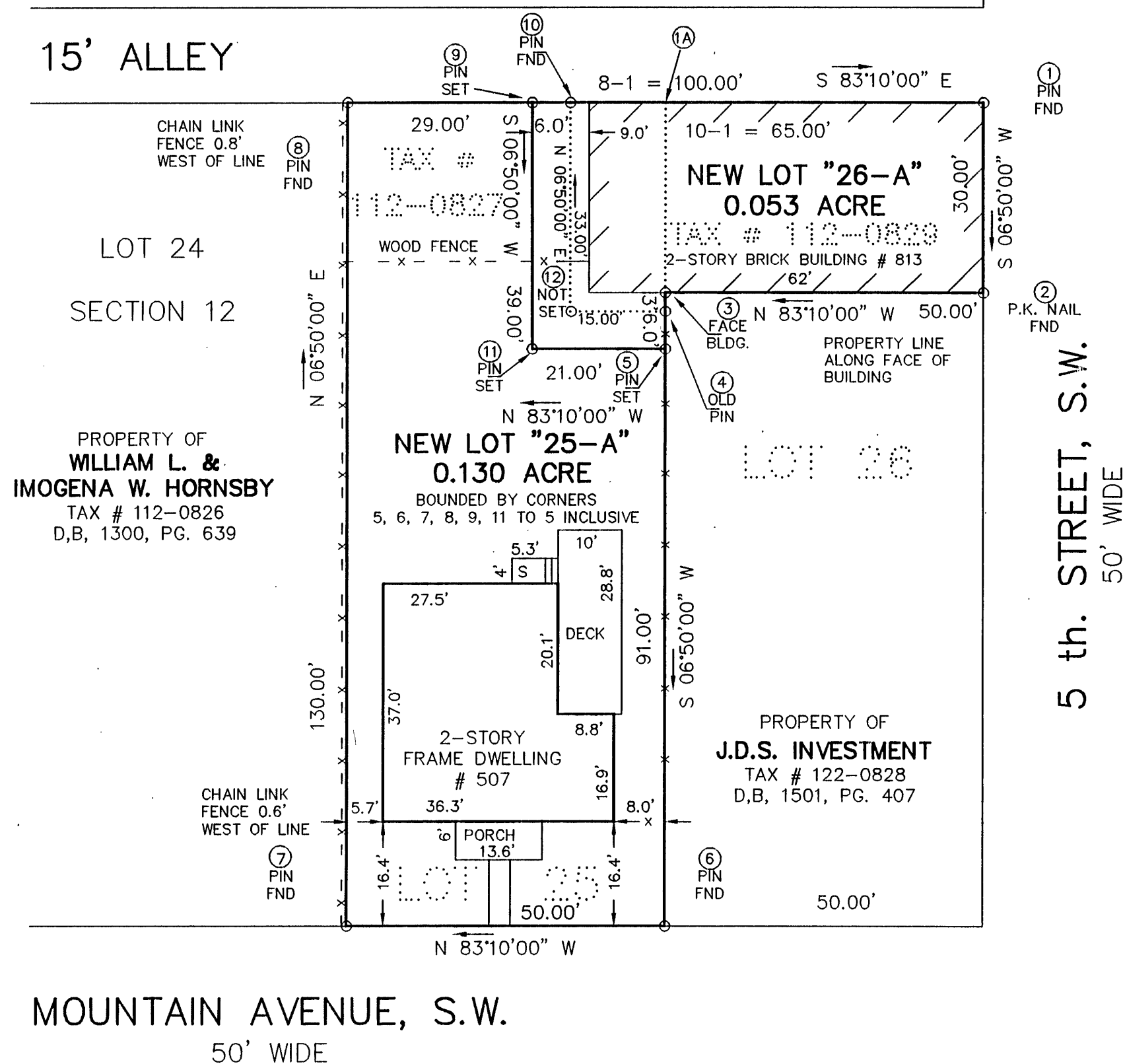
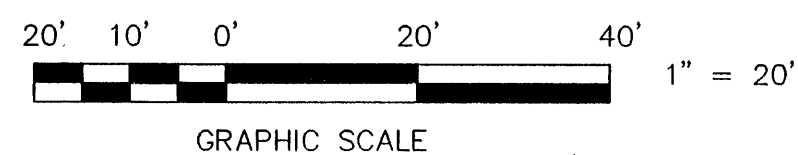
VARIANCE FOR FRONTAGE AND LOT AREA, SEE
ORDINANCE # 66-96V-A RECORDED IN
D.B._____, PG._____.



LOCATION MAP
NO SCALE

COORDINATES		
CORNER	NORTHING	EASTING
1	3000.00	3000.00
2	2970.21	2996.43
3	2976.16	2946.79
4	2973.18	2946.43
5	2967.23	2945.71
6	2876.87	2934.89
7	2882.82	2885.24
8	3011.90	2900.71
9	3008.45	2929.50
10	3007.73	2935.46
1	3000.00	3000.00

THESE COORDINATES ARE BASED
ON AN ASSUMED DATUM.



NEW LOT "26-A"
0.053 ACRE

BOUNDED BY CORNERS
1, 2, 3, 4, 5, 11, 9,
10 TO 1 INCLUSIVE

RESUBDIVISION FOR
MARK C. KARY

SHOWING RESUBDIVISION OF LOT 25 AND A
PORTION OF LOT 26, SECTION 12,
LEWIS ADDITION, CITY MAP # 1079
CREATING HEREON NEW LOT "25-A" (0.130 AC.)
AND NEW LOT "26-A" (0.053 AC.)
SITUATE ON MOUNTAIN AVENUE, S.W. AND 5 th. STREET, S.W.
ROANOKE, VIRGINIA

TAX # 112-0827, 0829
CALC: LRD
DRAWN: LRD/135
N.B. G-166

SCALE: 1" = 20'
DATE: AUGUST 12, 1996
REV. DECEMBER 5, 1996
W.O. 96-0644

CLOSED BY LRD

SHEET 2 OF 2

M.B. 1, PG. 1630