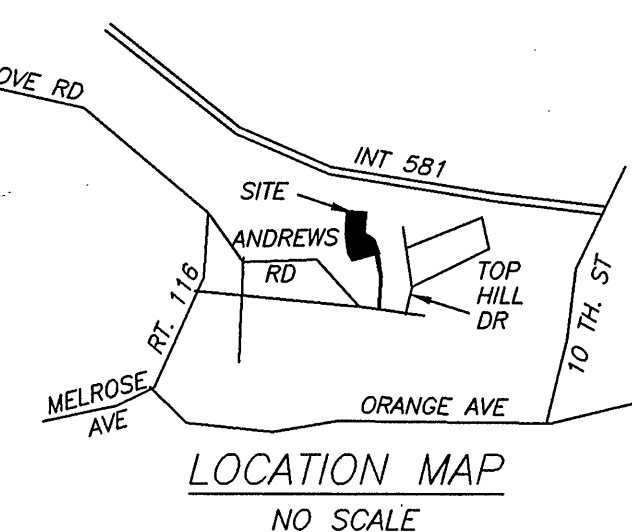


THIS IS AN ORIGINAL SIZE PLAT AND HAS NOT BEEN REDUCED

HOUSE DETAIL

1" = 40'

1919 ANDREWS ROAD, N.W.



D.B. MERIDIAN OF
1477, PG. 1648

ANDREWS ROAD, N.W.
VARIABLE WIDTH

WELLINGTON HILLS
M.B. 1, PG. 213

HERITAGE ACRES
M.B. 1, PG. 237

NOW OR FORMERLY
PROPERTY OF
B E K COMPANY
TAX # 235-0105
D.B. 1510, PG. 1420

PARCEL III
D.B. 1477, PG. 1678
TAX # 235-0106
0.23 ACRE
BOUNDED BY CORNERS
1, 9, 10, 11, 12, 13, 2
TO 1 INCLUSIVE
MADE PART OF
30' PRIVATE ROADWAY
BY D.B. 270, PG. 53

LEGEND

-X- = EXISTING FENCE
SP = SCREENED PORCH
OHW = OVERHEAD WIRES
⌚ = UTILITY POLE
RR SPIKE = RAILROAD SPIKE
RKE CO = ROANOKE COUNTY
FND = FOUND
SE = SEWER EASEMENT
T&EE = TELEPHONE & ELECTRIC EASEMENT
PUE = PUBLIC UTILITY EASEMENT
CORP = CORPORATION
P.U.E. = PUBLIC UTILITY EASEMENT
BR SPK = BRIDGE SPIKE

REFERENCE MAPS:

1. PLAT MADE FOR JOHN W. WAYNICK, JR. BY C.B. MALCOLM, S.C.E. DATED NOV. 27, 1939 AND RECORDED IN D.B. 270, PG. 53.
2. PLAT OF SURVEY FOR THE CITY OF ROANOKE BY MATTERN & CRAIG DATED APRIL 5, 1988 AND RECORDED IN M.B. 1, PG. 876.
3. PLAT SHOWING SUBDIVISION OF PROPERTY OF THOMAS W. & REBECCA Y. HALE BY DAVID DICK, C.L.S. DATED NOV. 1, 1966 AND RECORDED IN D.B. 1209, PG. 8 (RKE CITY).
4. MAP OF HERITAGE ACRES BY T. P. PARKER & SON DATED NOV. 26, 1975 AND RECORDED IN M.B. 1, PG. 237.
5. MAP OF WELLINGTON HILLS BY T. P. PARKER & SON DATED APR. 16, 1973 AND RECORDED IN M.B. 1, PG. 213.
6. MAP OF SANFORD HILL BY C. B. MALCOLM & SON DATED OCT. 15, 1955 AND RECORDED IN M.B. 1, PG. 74.
7. MAP OF FAIRLAND BY MATTERN & MATTERN ENGINEERS DATED JAN 1948 AND RECORDED IN P.B. 3, PG. 26.

GENERAL NOTES:

1. THIS PLAT WAS PREPARED WITHOUT BENEFIT OF A TITLE REPORT AND IS SUBJECT THERETO. THEREFORE, THERE MAY EXIST ENCUMBRANCES WHICH AFFECT THE PROPERTY NOT SHOWN HEREON.
2. THE SUBJECT PROPERTY IS WITHIN THE LIMITS OF ZONE "AE" & "X" AS SHOWN ON THE FEMA FLOOD INSURANCE RATE MAP PANEL NO. 51161C0042 D. THIS DETERMINATION IS BASED ON SAID MAP AND HAS NOT BEEN VERIFIED BY ACTUAL FIELD ELEVATIONS.

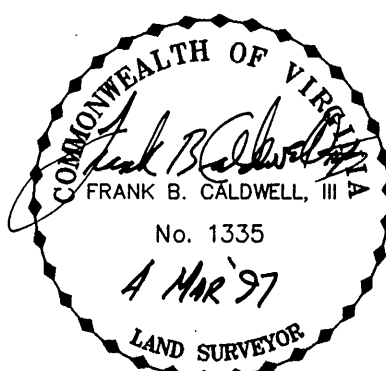
IN THE CLERK'S OFFICE OF THE CIRCUIT COURT OF THE CITY OF ROANOKE,
VIRGINIA THIS MAP WAS PRESENTED WITH THE CERTIFICATE OF ACKNOWLEDG-
MENT THERETO ATTACHED ADMITTED TO RECORD AT 3:10 O'CLOCK
8 A.M. ON THIS 13th DAY OF May, 1997.

TESTE: ARTHUR B. CRUSH, III
CLERK

CLERK
BY: Lena Testerman
DEPUTY CLERK

CLOSED BY LRD

THIS BOUNDARY SURVEY IS BASED
ON A CURRENT FIELD SURVEY
DANIEL S. & BETTY M. WOOLDRIDGE
ARE THE OWNERS OF RECORD, SEE
D.B. 1477, PG. 1648.



PARCEL 1
B. 1477, PG. 1678
TAX # 235-0101
0.11 ACRES
BUNDLED BY CORNERS
4, 5, 6, 7, 8
TO 4 INCLUSIVE

PARCEL II
+ D.B. 1477, PG. 1678
3.39 ACRES
BOUNDED BY CORNERS,
1, 2, 3, 4, 8
TO 1 INCLUSIVE,

NOW OR FORMERLY PROPERTY OF
FIRST NATION EXCHANGE BANK, TRUSTEE
& PETER HUFF RING, TRUSTEE
 TAX # 235-0107
 W.B. 18, PG. 105, W.B. 42, PG. 532

SANFORD HILL
IN M.B. 1, PG. 74

FAIRLAND
BLOCK 11
P.B. 3, PG. 26

FAIRLAND
BLOCK 12
P.B. 3. PG. 26

LOT-A
D.B. 1209, PG. 8
PROPERTY OF
THOMAS W. HALE ET UX
TAX # 247-1402

NOW OR FORMERLY
PROPERTY OF
RUTH B. LEMON
A.F.H. CORP.
TAX # 247-1401
D.B. 1672, PG. 2011

BOUNDARY SURVEY FOR
GARY H. & MARGARET E. RUDD

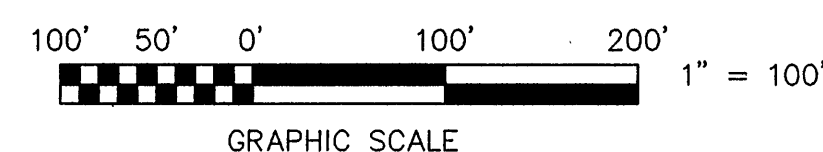
OF 10.11 ACRE TRACT, 3.39 ACRE TRACT
AND 0.23 ACRE TRACT
SITUATE ON HUFF ROAD, N.W., 30' PRIVATE INGRESS/EGRESS EASEMENT
ROANOKE, VIRGINIA

TAX # 235-0101, 0102
235-0103, 0106
CALC: LRD
DRAWN: LRD/146

SCALE: 1" = 100'
DATE: MARCH 4, 1997
W.O. 97-0114
N.B. WW-133



TPP&S T. P. PARKER & SON
ENGINEERS 816 Boulevard
SURVEYORS Post Office Box 39
PLANNERS Salem, Virginia 24153



M.B. 1, PG. 1639