

NOTES:

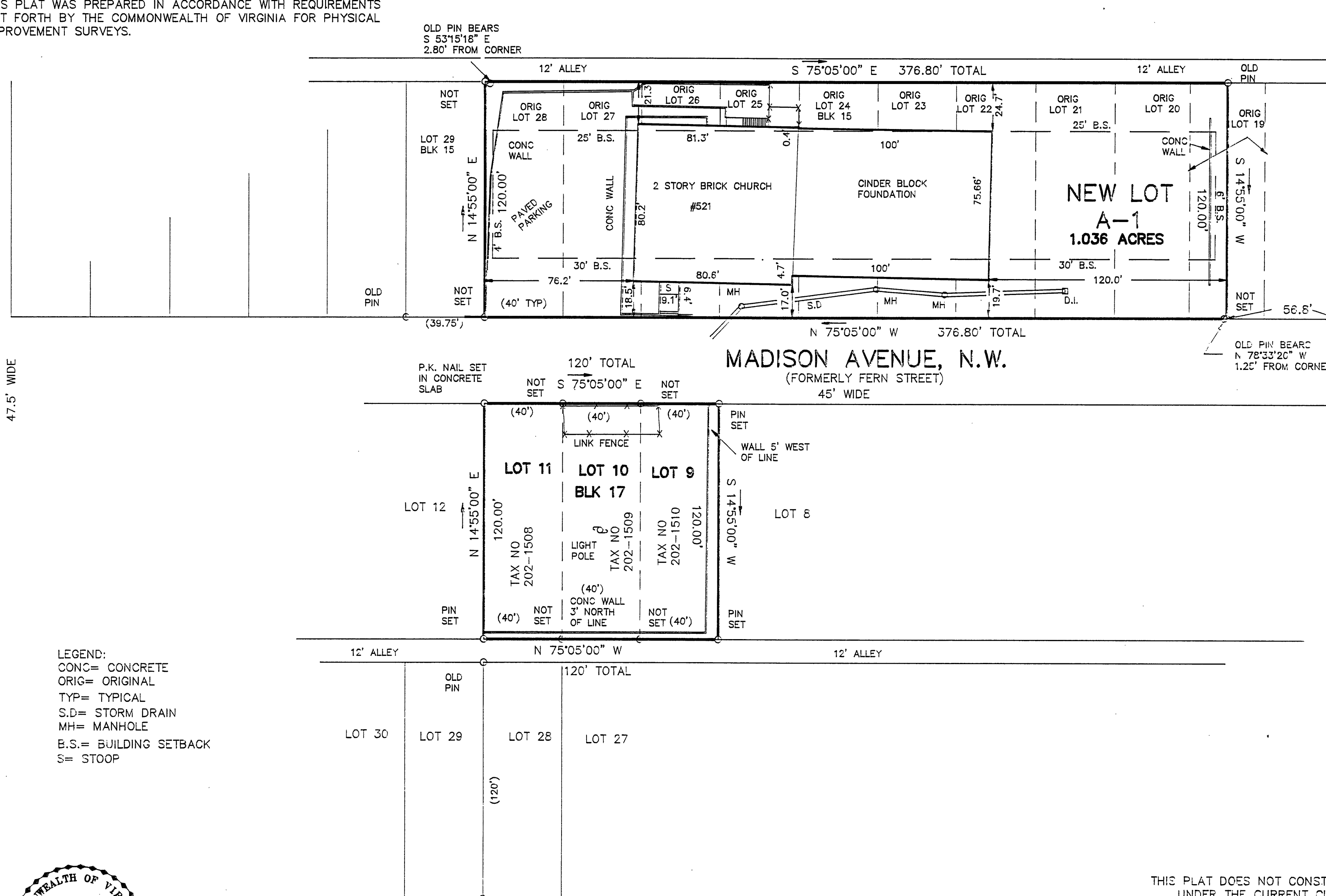
1. THIS PLAT WAS PREPARED WITHOUT BENEFIT OF A TITLE REPORT AND IS SUBJECT THERETO. THEREFORE, THERE MAY EXIST ENCUMBRANCES WHICH AFFECT THE PROPERTY NOT SHOWN HEREON.
2. THE SUBJECT PROPERTY IS WITHIN THE LIMITS OF ZONE "X" AS SHOWN ON THE FEMA FLOOD INSURANCE RATE MAP. THIS DETERMINATION IS BASED ON SAID MAP AND HAS NOT BEEN VERIFIED BY ACTUAL FIELD ELEVATIONS.
3. THIS PLAT WAS PREPARED IN ACCORDANCE WITH REQUIREMENTS SET FORTH BY THE COMMONWEALTH OF VIRGINIA FOR PHYSICAL IMPROVEMENT SURVEYS.

THIS IS AN ORIGINAL SIZE PLAT AND HAS NOT BEEN REDUCED.

SIXTH STREET, N.W.  
(FORMERLY NORTH STREET)  
47.5' WIDE

FIFTH STREET, N.W.  
(FORMERLY PARK STREET)  
50' WIDE

MERIDIAN OF M.B. 1 PG. 1384



LEGEND:  
CONC= CONCRETE  
ORIG= ORIGINAL  
TYP= TYPICAL  
S.D= STORM DRAIN  
MH= MANHOLE  
B.S.= BUILDING SETBACK  
S= STOOP

MAP REFERENCE  
M.B. 1 PG. 1384

THIS PLAT DOES NOT CONSTITUTE A SUBDIVISION  
UNDER THE CURRENT CITY OF ROANOKE  
SUBDIVISION ORDINANCE.

SURVEY FOR  
SWEET UNION BAPTIST CHURCH

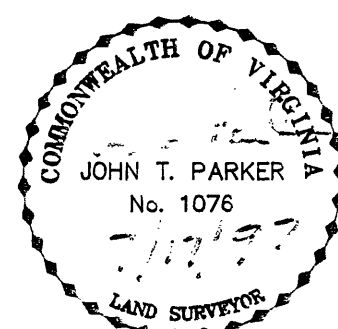
SHOWING NEW LOT A-1, 1.036 ACRES M.B. 1, PG. 1384 &  
LOTS 9, 10 & 11, BLOCK 17,  
NORTHSIDE ADDITION  
ROANOKE, VIRGINIA

TAX # 202-1227  
N.B.C. 164 202-1508  
CALC. 202-1509  
CLOSED: 202-1510  
DRAWN JD 193  
CHK'D LRD  
EOC=



T. P. PARKER & SON  
816 Boulevard  
Post Office Box 39  
Salem, Virginia 24153

SCALE: 1"= 40'  
DATE: JULY 17, 1997  
W.O.: 97-0814



IN THE CLERK'S OFFICE OF THE CIRCUIT COURT OF THE CITY OF ROANOKE,  
VIRGINIA THIS MAP WAS PRESENTED WITH THE CERTIFICATE OF ACKNOWLEDG-  
MENT THERETO ATTACHED ADMITTED TO RECORD AT 2:00 O'CLOCK  
P.M. ON THIS 31st DAY OF July, 1997.

TESTE: ARTHUR E. CRUSH, III  
CLERK  
BY: *Kate Chase*  
DEPUTY CLERK

