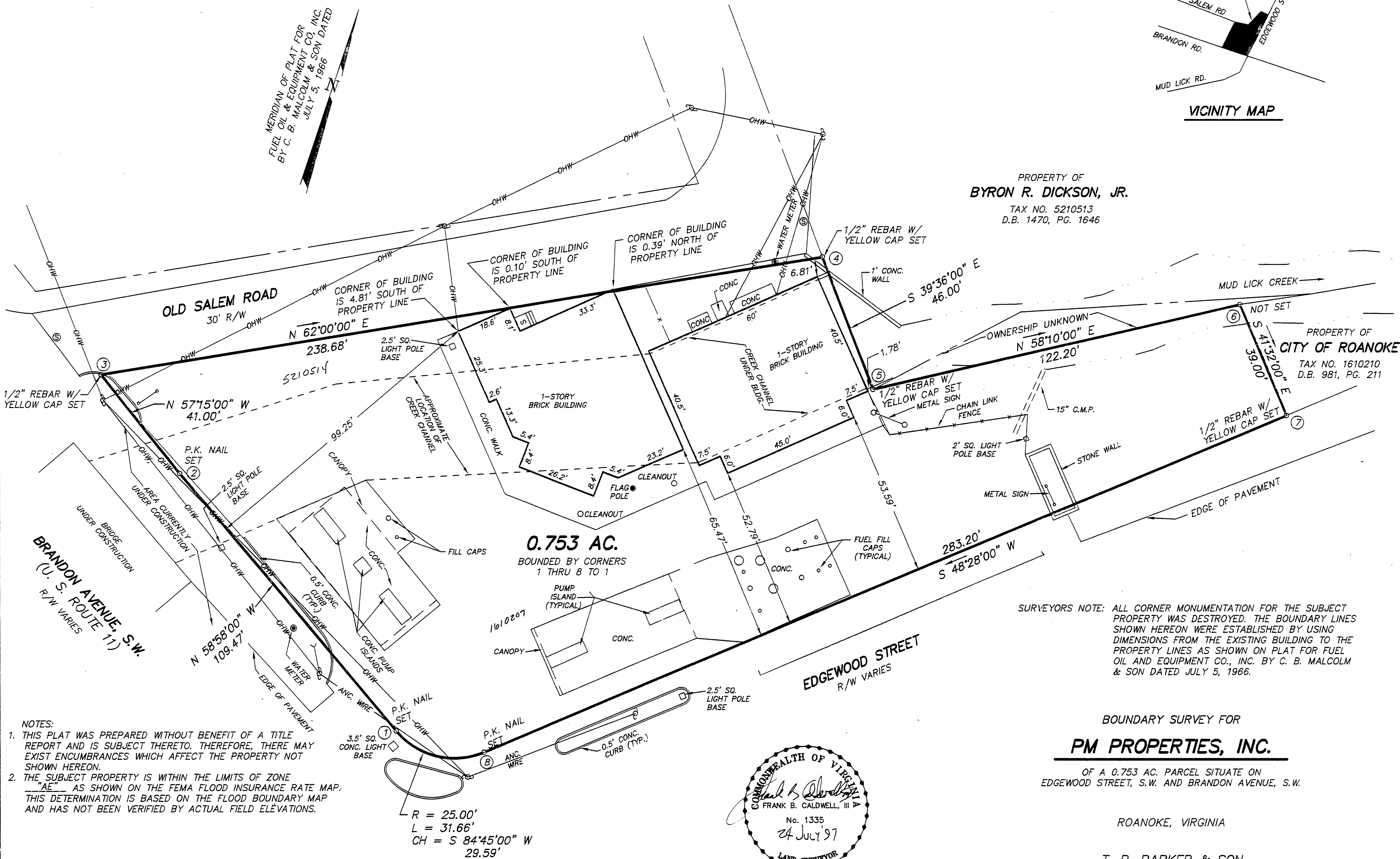


VICINITY MAP

PROPERTY OF  
**BYRON R. DICKSON, JR.**  
TAX NO. 5210513  
D.B. 1470, PG. 1646

PROPERTY OF  
**CITY OF ROANOKE**  
TAX NO. 1610210  
D.B. 981, PG. 211



SURVEYORS NOTE: ALL CORNER MONUMENTATION FOR THE SUBJECT PROPERTY WAS DESTROYED. THE BOUNDARY LINES SHOWN HEREON WERE ESTABLISHED BY USING DIMENSIONS FROM THE EXISTING BUILDING TO THE PROPERTY LINES AS SHOWN ON PLAT FOR FUEL OIL AND EQUIPMENT CO., INC. BY C. B. MALCOLM & SON DATED JULY 5, 1966.

BOUNDARY SURVEY FOR

**PM PROPERTIES, INC.**

OF A 0.753 AC. PARCEL SITUATE ON  
EDGEWOOD STREET, S.W. AND BRANDON AVENUE, S.W.

ROANOKE, VIRGINIA

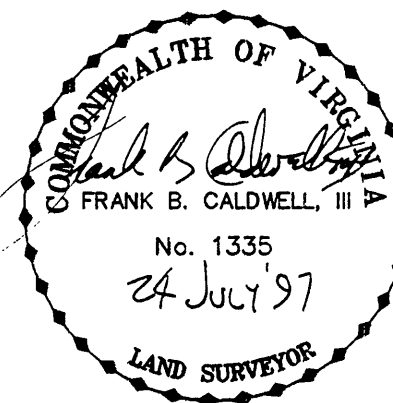
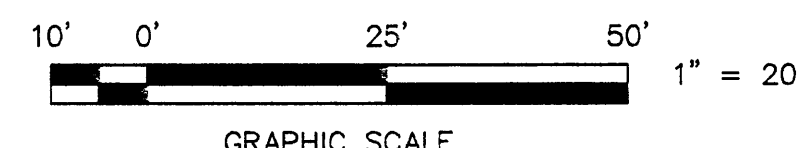
**T. P. PARKER & SON**

ENGINEERS - SURVEYORS - PLANNERS

TAX NO.: 5210514  
1610207  
DRAWN: DAP  
CALC.: DAP  
N.B.: WW-146

SCALE: 1" = 20'  
JULY 24, 1997  
W.O.: 97-0817

THIS PLAT IS BASED ON A CURRENT  
FIELD SURVEY AND LEGAL DESCRIPTIONS  
CONTAINED IN D.B. 970, PG. 335 (RKE CITY)  
AND D.B. 592, PG. 710 (RKE CO)



- NOTES:
- THIS PLAT WAS PREPARED WITHOUT BENEFIT OF A TITLE REPORT AND IS SUBJECT THERETO. THEREFORE, THERE MAY EXIST ENCUMBRANCES WHICH AFFECT THE PROPERTY NOT SHOWN HEREON.
  - THE SUBJECT PROPERTY IS WITHIN THE LIMITS OF ZONE "AE" AS SHOWN ON THE FEMA FLOOD INSURANCE RATE MAP. THIS DETERMINATION IS BASED ON THE FLOOD BOUNDARY MAP AND HAS NOT BEEN VERIFIED BY ACTUAL FIELD ELEVATIONS.

$R = 25.00'$   
 $L = 31.66'$   
 $CH = S 84°45'00'' W 29.59'$

IN THE CLERK'S OFFICE OF THE CIRCUIT COURT OF THE CITY OF ROANOKE, VIRGINIA THIS MAP WAS PRESENTED AND ADMITTED TO RECORD AT 4:03 O'CLOCK P.M. ON THIS 1st DAY OF August, 1997.

TESTE: ARTHUR B. CRUSH, III  
CLERK

BY: Kathy Chish  
DEPUTY CLERK