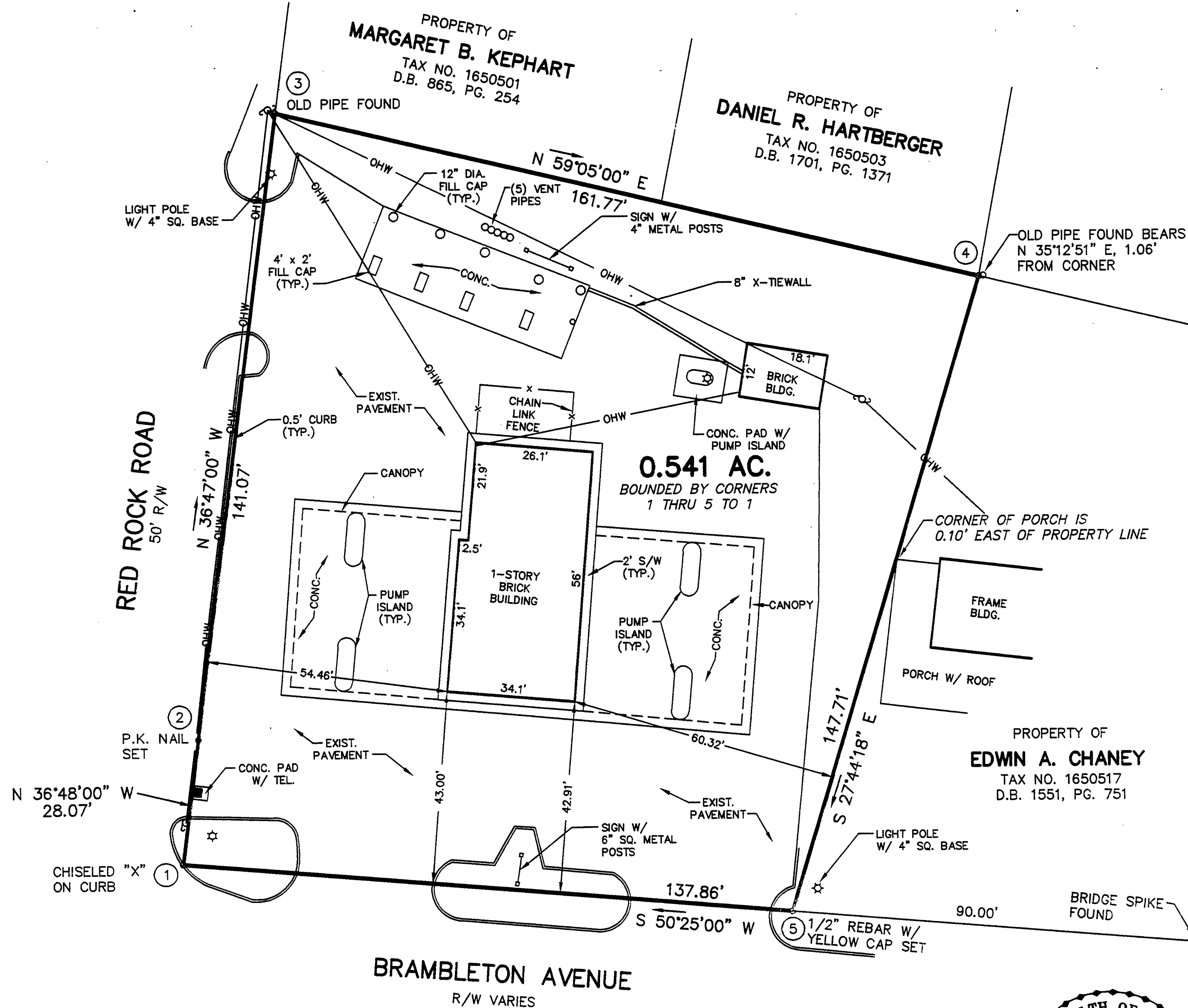


MERIDIAN OF D.B. 1472, PG. 1480



- NOTES:
1. THIS PLAT WAS PREPARED WITHOUT BENEFIT OF A TITLE REPORT AND IS SUBJECT THERETO. THEREFORE, THERE MAY EXIST ENCUMBRANCES WHICH AFFECT THE PROPERTY NOT SHOWN HEREON.
 2. THE SUBJECT PROPERTY IS WITHIN THE LIMITS OF ZONE "X" AS SHOWN ON THE FEMA FLOOD INSURANCE RATE MAP. THIS DETERMINATION IS BASED ON THE FLOOD BOUNDARY MAP AND HAS NOT BEEN VERIFIED BY ACTUAL FIELD ELEVATIONS.
 3. SEE PLAT FOR FUEL OIL AND EQUIPMENT CO., INC. BY T. P. PARKER & SON DATED NOVEMBER 17, 1986 AND RECORDED IN M.B. 1, PG. 571.

BOUNDARY SURVEY FOR
PM PROPERTIES, INC.
OF A 0.541 AC. PARCEL SITUATE ON
BRAMBLETON AVENUE, S.W.

ROANOKE, VIRGINIA

T. P. PARKER & SON
ENGINEERS - SURVEYORS - PLANNERS

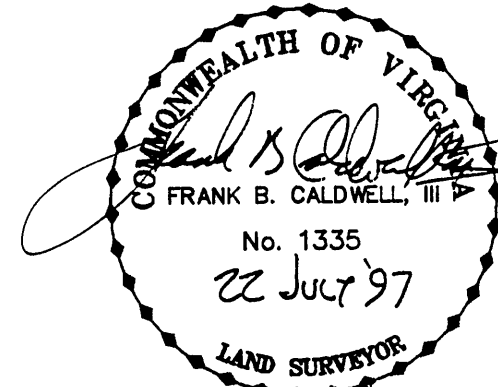
TAX NO.: 1650536
DRAWN: JR
CALC.: DAP
N.B.: WW-144

SCALE: 1" = 20'
JULY 22, 1997
W.O.: 97-0816

IN THE CLERK'S OFFICE OF THE CIRCUIT COURT OF THE CITY OF ROANOKE, VIRGINIA THIS MAP WAS PRESENTED AND ADMITTED TO RECORD AT 4:01 O'CLOCK P.M. ON THIS 1ST DAY OF August, 1997.

TESTE: ARTHUR B. CRUSH, III
CLERK

BY: *[Signature]*
DEPUTY CLERK



THIS PLAT IS BASED ON A CURRENT
FIELD SURVEY AND LEGAL DESCRIPTIONS
CONTAINED IN D.B. 1472, PG. 1480

