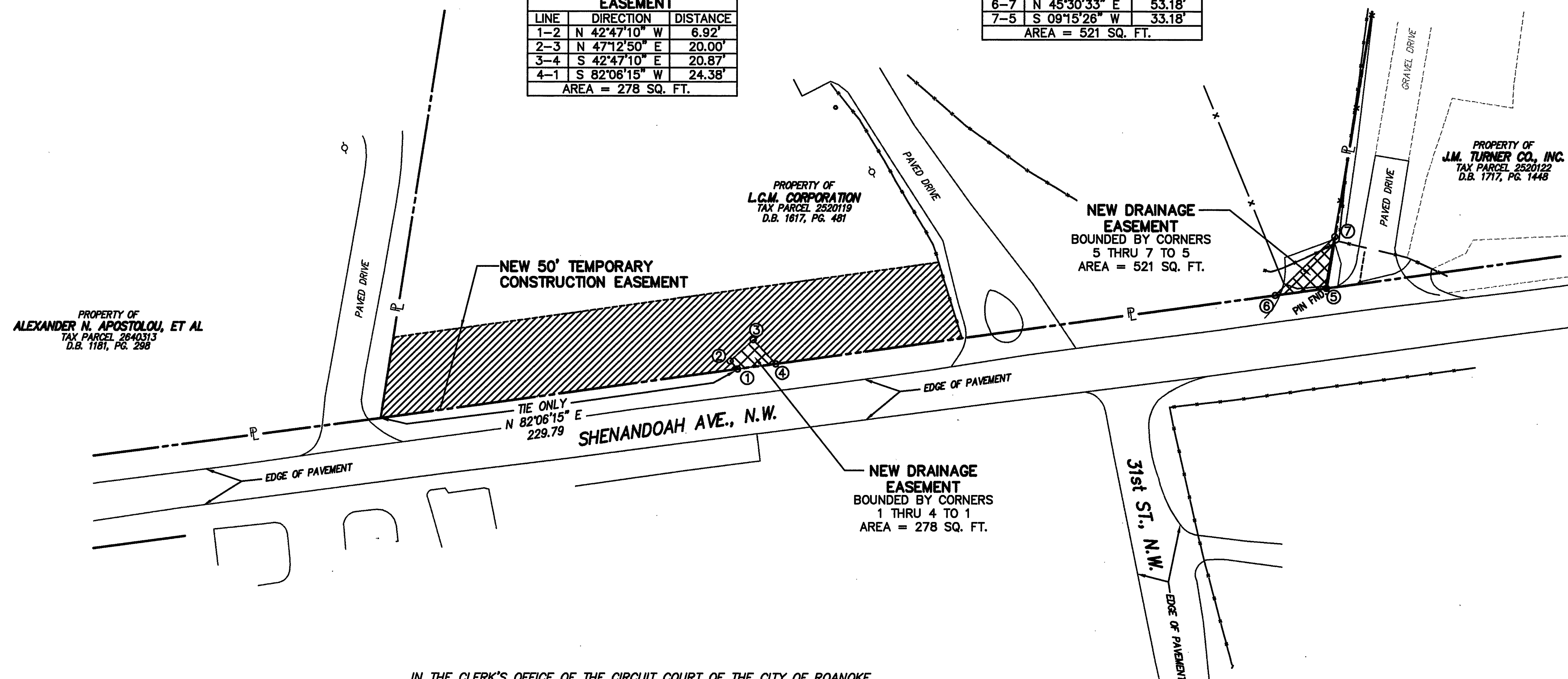


MERIDIAN OF VIRGINIA STATE
PLANE COORDINATE SYSTEM
SOUTH ZONE NAD 83

NEW DRAINAGE EASEMENT		
LINE	DIRECTION	DISTANCE
1-2	N 42°47'10" W	6.92'
2-3	N 47°12'50" E	20.00'
3-4	S 42°47'10" E	20.87'
4-1	S 82°06'15" W	24.38'
AREA = 278 SQ. FT.		

NEW DRAINAGE EASEMENT		
LINE	DIRECTION	DISTANCE
5-6	S 82°06'15" W	32.89'
6-7	N 45°30'33" E	53.18'
7-5	S 09°15'26" W	33.18'
AREA = 521 SQ. FT.		

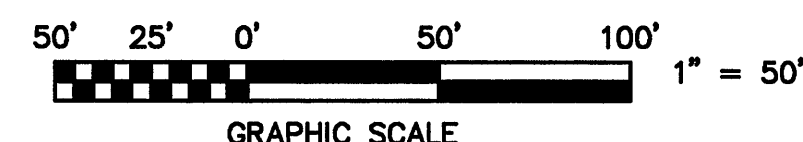


IN THE CLERK'S OFFICE OF THE CIRCUIT COURT OF THE CITY OF ROANOKE,
VIRGINIA THIS MAP WAS PRESENTED AND ADMITTED TO RECORD AT 10:00 O'CLOCK
A.M. ON THIS 13 DAY OF October, 1997.

TESTE: ARTHUR B. CRUSH, III

BY: Kathy Chiles
DEPUTY CLERK

APPROVED:
Charles M. Buffing 9-26-97
CITY ENGINEER DATE
CITY OF ROANOKE



LEGEND	
	PROPERTY LINE
	NEW DRAINAGE EASEMENT
	NEW TEMP. CONST. ESM'T.
	FENCE
	UTILITY POLE

NOTES:

1. THIS PLAT WAS PREPARED WITHOUT BENEFIT OF A TITLE REPORT AND IS SUBJECT THERETO. THEREFORE, THERE MAY EXIST ENCUMBRANCES WHICH AFFECT THE PROPERTY NOT SHOWN HEREON.
2. METES AND BOUNDS DESCRIPTIONS SHOWN HEREON REPRESENT A COMPOSITE OF DEEDS, PLATS, CALCULATED INFORMATION AND FIELD TIES TO PROPERTY BOUNDARIES TO LOCATE THE POSITION OF THE EASEMENT IN RELATION TO THE BOUNDARIES. THIS SURVEY DOES NOT REFLECT A COMPLETE AND ACCURATE BOUNDARY SURVEY OF THE SUBJECT PROPERTIES.

EASEMENT PLAT FOR
CITY OF ROANOKE
SHOWING 2 NEW DRAINAGE EASEMENTS
AND A NEW 50' TEMPORARY CONSTRUCTION
EASEMENT BEING CONVEYED BY

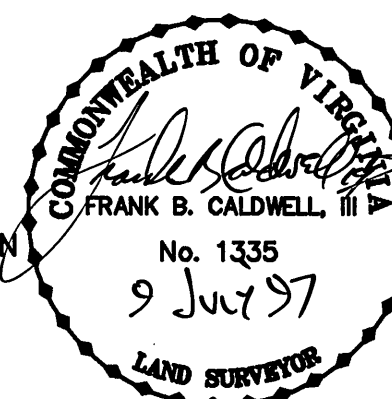
L.C.M. CORPORATION

ROANOKE, VIRGINIA

TAX NO. 2520119
N.B. DRAWN JPR
CALC. JPR CHK'D DAP
CLOSED: JPR



TPP&S T. P. PARKER & SON
ENGINEERS 616 Boulevard
SURVEYORS Post Office Box 39
PLANNERS Salem, Virginia 24163



CITY PLAN NO. 6360-J

SCALE: 1" = 50'
DATE: JULY 9, 1997
D- 47054
W.O.: 97-0012