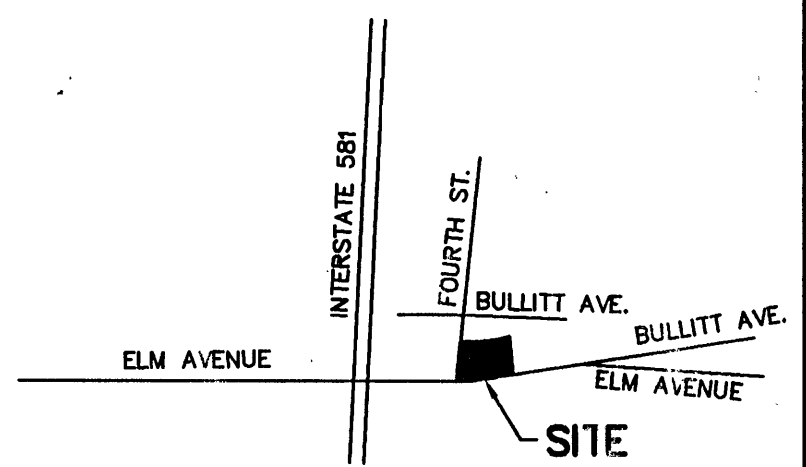


- EASEMENTS**
- D.B. 1190, PG. 321 - TEMPORARY EASEMENT FOR SLOPE MAINTENANCE TO CITY OF ROANOKE - TERMINATED DUE TO REMOVAL OF SLOPES.
 - D.B. 1190, PG. 330 - TEMPORARY EASEMENT FOR SLOPE MAINTENANCE TO CITY OF ROANOKE - TERMINATED DUE TO REMOVAL OF SLOPES.
 - D.B. 1190, PG. 339 - TEMPORARY EASEMENT FOR SLOPE MAINTENANCE TO CITY OF ROANOKE - TERMINATED DUE TO REMOVAL OF SLOPES.
 - D.B. 1193, PG. 61 - TEMPORARY EASEMENT FOR SLOPE MAINTENANCE TO CITY OF ROANOKE - TERMINATED DUE TO REMOVAL OF SLOPES.
 - D.B. 1193, PG. 98 - TEMPORARY EASEMENT FOR SLOPE MAINTENANCE TO CITY OF ROANOKE - TERMINATED DUE TO REMOVAL OF SLOPES.
 - D.B. 1234, PG. 322 - EASEMENT TO APPALACHIAN POWER COMPANY FOR STREET LIGHT POLE - AS SHOWN.



VICINITY MAP

PROPERTY OF
DENNIS F. KING, ET UX
TAX NO. 4013523
D.B. 1734, PG. 1610

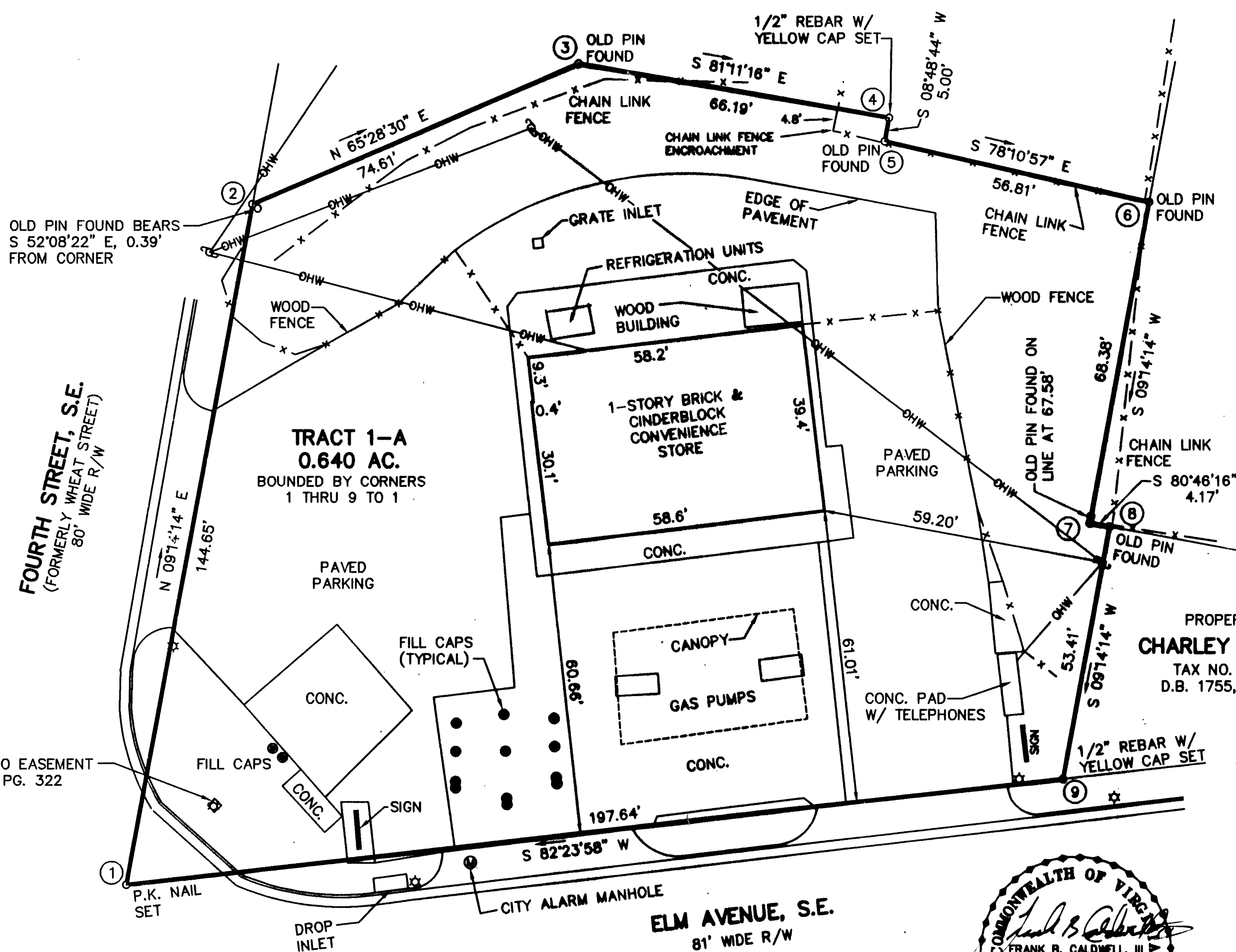
PROPERTY OF
CHARLEY V. DAVIS
TAX NO. 4013504
D.B. 1478, PG. 583

LEGEND

- WM WATER VALVE
- ☆ LIGHT POLE
- ☐ POWER POLE
- x-x-x- FENCE

THIS PLAT DOES NOT CONSTITUTE A
SUBDIVISION UNDER THE CURRENT
CITY OF ROANOKE SUBDIVISION ORDINANCE

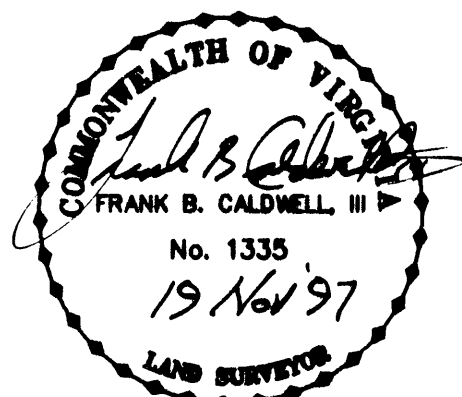
- NOTES:**
1. THIS PLAT WAS PREPARED WITHOUT BENEFIT OF A TITLE REPORT AND IS SUBJECT THERETO. THEREFORE, THERE MAY EXIST ENCUMBRANCES WHICH AFFECT THE PROPERTY NOT SHOWN HEREON.
 2. THE SUBJECT PROPERTY IS WITHIN THE LIMITS OF ZONE "X" AS SHOWN ON THE FEMA FLOOD INSURANCE RATE MAP. THIS DETERMINATION IS BASED ON THE FLOOD BOUNDARY MAP AND HAS NOT BEEN VERIFIED BY ACTUAL FIELD ELEVATIONS.



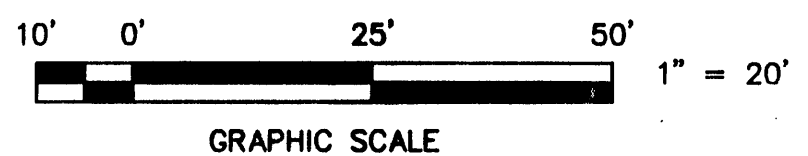
2' SQUARE APCO EASEMENT
SEE D.B. 1234, PG. 322

IN THE CLERK'S OFFICE OF THE CIRCUIT COURT OF THE CITY OF ROANOKE, VIRGINIA THIS MAP WAS PRESENTED AND ADMITTED TO RECORD AT 5:12 O'CLOCK P.M. ON THIS 30th DAY OF December, 1997.

TESTE: ARTHUR B. CRUSH, III
CLERK
BY: [Signature]
DEPUTY CLERK



THIS PLAT IS BASED ON A CURRENT FIELD SURVEY AND LEGAL DESCRIPTION CONTAINED IN D.B. 1757, PG. 260 TO JEFFREY R. FLETCHER



**BOUNDARY SURVEY FOR
ELM AVENUE, L.L.C.**

OF TRACT 1-A (0.640 AC.), DAVID L. KINSEY, ET ALS
SUBDIVISION, M.B. 1, PG. 1397 SITUATE ON ELM AVENUE, S.E.

ROANOKE, VIRGINIA

T. P. PARKER & SON
ENGINEERS - SURVEYORS - PLANNERS

TAX NO.: 4013519 SCALE: 1" = 20'
DRAWN: DAP OCTOBER 27, 1997
CALC.: DAP W.O.: 97-1277
N.B.: F-14 REVISED: NOV. 18, 1997