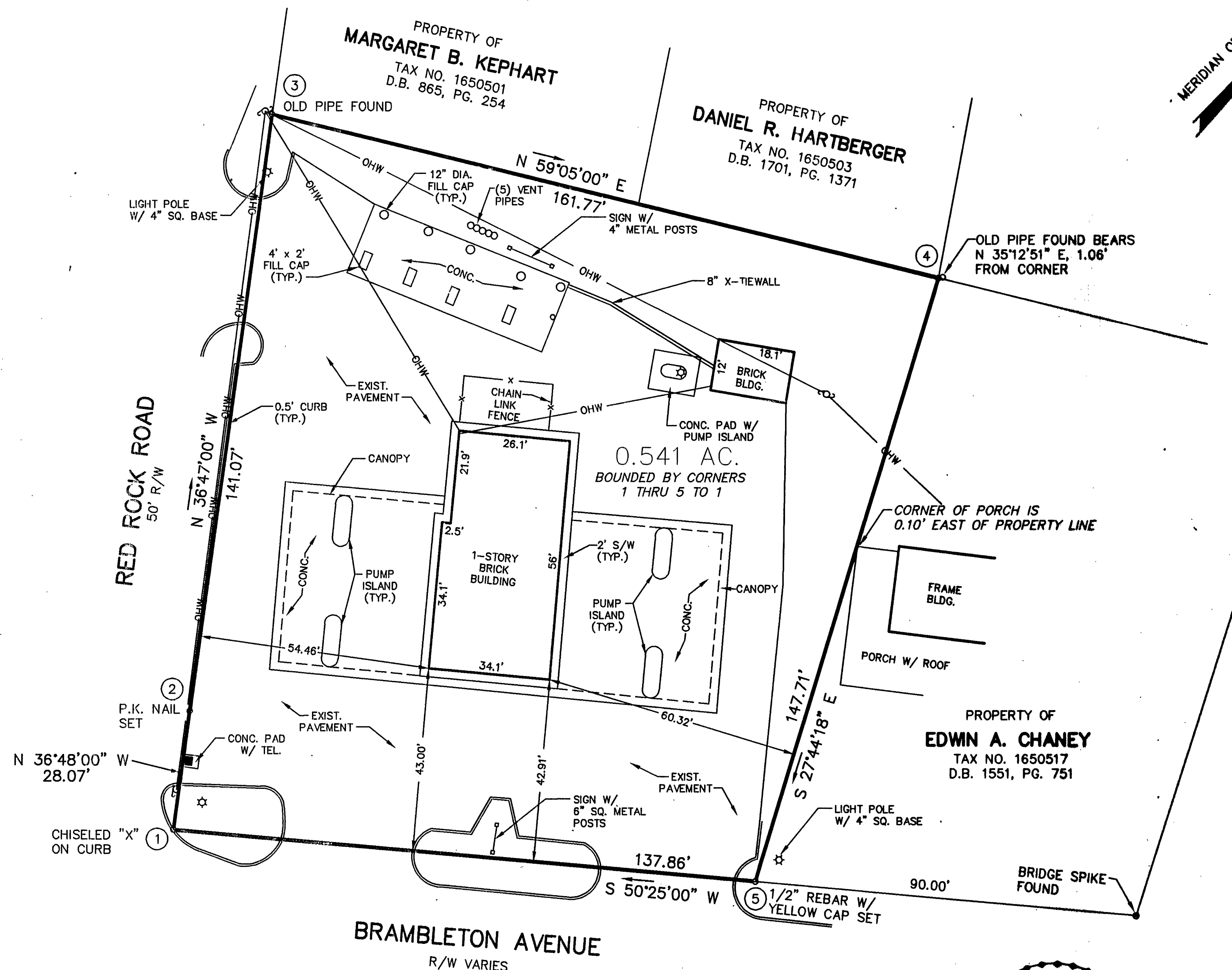


VICINITY MAP

MERIDIAN OF D.B. 1472, PG. 1480



- NOTES:
1. THIS PLAT WAS PREPARED WITHOUT BENEFIT OF A TITLE REPORT AND IS SUBJECT THERETO. THEREFORE, THERE MAY EXIST ENCUMBRANCES WHICH AFFECT THE PROPERTY NOT SHOWN HEREON.
  2. THE SUBJECT PROPERTY IS WITHIN THE LIMITS OF ZONE "X" AS SHOWN ON THE FEMA FLOOD INSURANCE RATE MAP. THIS DETERMINATION IS BASED ON THE FLOOD BOUNDARY MAP AND HAS NOT BEEN VERIFIED BY ACTUAL FIELD ELEVATIONS.
  3. SEE PLAT FOR FUEL OIL AND EQUIPMENT CO., INC. BY T. P. PARKER & SON DATED NOVEMBER 17, 1986 AND RECORDED IN M.B. 1, PG. 571.

BOUNDARY SURVEY FOR  
ROANOKE VALLEY, LLC

OF A 0.541 AC. PARCEL SITUATE ON  
BRAMBLETON AVENUE, S.W.

ROANOKE, VIRGINIA

T. P. PARKER & SON  
ENGINEERS - SURVEYORS - PLANNERS

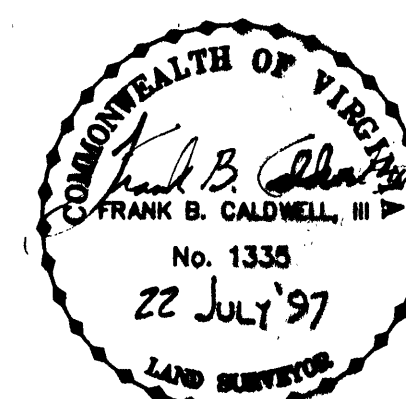
TAX NO.: 1650536  
DRAWN: JR  
CALC.: DAP  
N.B.: WW-144

SCALE: 1" = 20'  
JULY 22, 1997  
W.O.: 97-0816  
REVISED: DECEMBER 16, 1997

IN THE CLERK'S OFFICE OF THE CIRCUIT COURT OF THE CITY OF ROANOKE,  
VIRGINIA THIS MAP WAS PRESENTED AND ADMITTED TO RECORD AT 2:35 O'CLOCK  
P.M. ON THIS 30 DAY OF JAN, 1998

TESTE: ARTHUR B. CRUSH, III  
CLERK

BY: *Keith Caldwell*  
DEPUTY CLERK



THIS PLAT IS BASED ON A CURRENT  
FIELD SURVEY AND LEGAL DESCRIPTIONS  
CONTAINED IN D.B. 1472, PG. 1480

