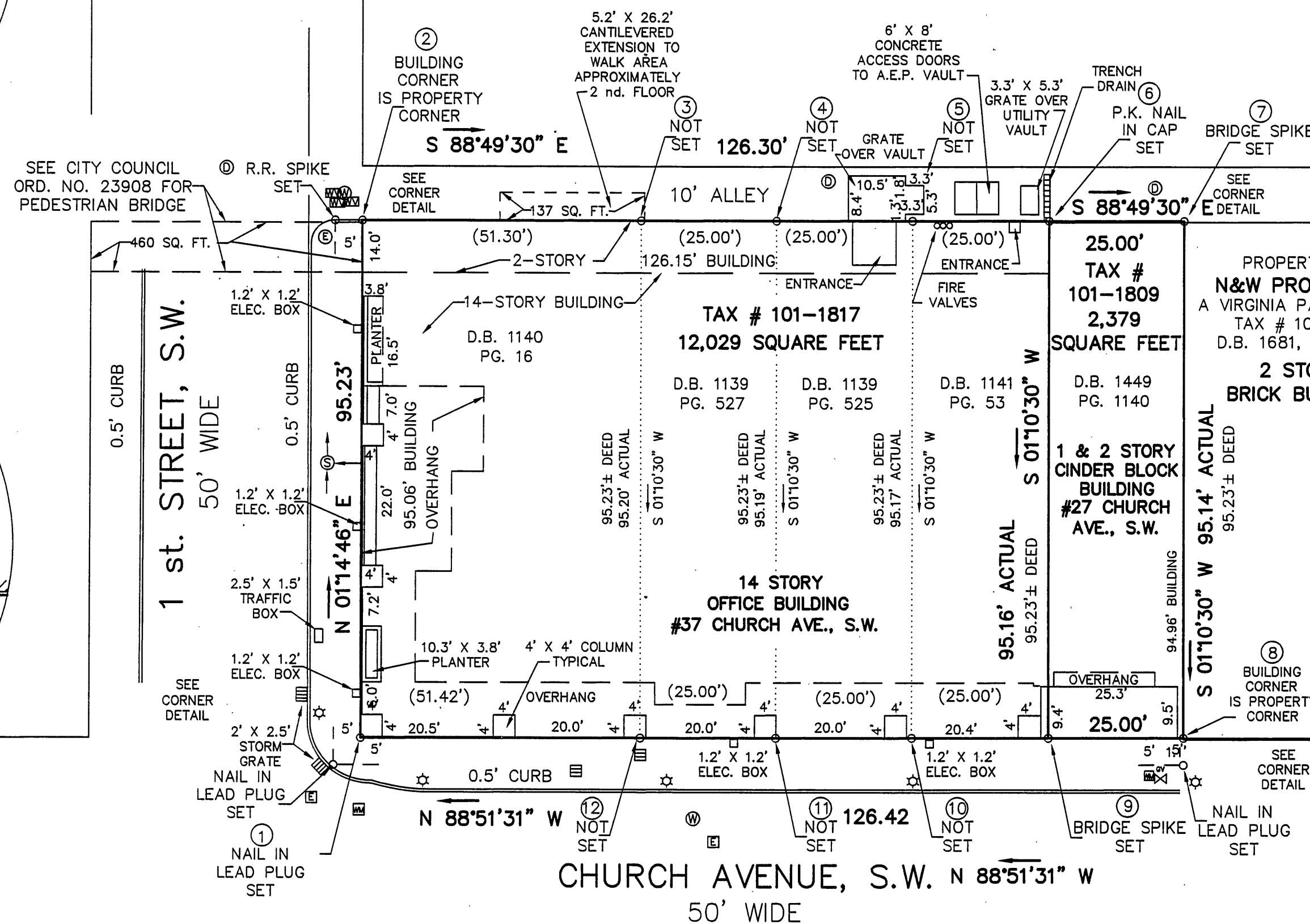


THIS IS AN ORIGINAL SIZE PLAT AND HAS NOT BEEN REDUCED.

- LEGEND**
- ⊙ = STORM DRAIN MANHOLE
  - ⊞ = ELECTRIC BOX
  - ⊕ = WATER MANHOLE
  - WV = WATER VALVE
  - ☆ = LIGHT POLE
  - ⊞ = GAS VALVE
  - ⊞ = WATER METER
  - ⊞ = ELECTRIC MANHOLE
  - R.R. = RAILROAD

ALSO BEING KNOWN AS  
A PORTION OF TRACT 20 & TRACT 21  
BLOCK 13  
OFFICIAL SURVEY  
SHEET NO. 1, S.W.

MERIDIAN OF  
D.B. 1140, PG. 16



**BOUNDARY SURVEY FOR  
HOLLY POINT PARTNERS, LLC**  
A VIRGINIA LIMITED LIABILITY COMPANY  
OF TAX # 101-1817 BEING PROPERTY DESCRIBED IN  
**FIRST STREET PARTNERS, L.L.C.**  
A VIRGINIA LIMITED LIABILITY COMPANY

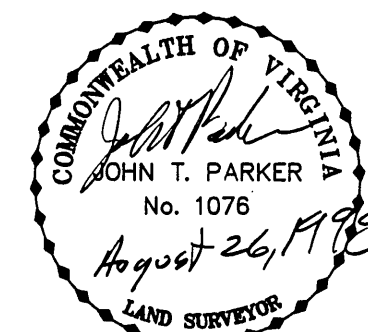
OF TAX # 101-1817 BEING PROPERTY DESCRIBED IN  
D.B. 1140, PG. 16; D.B. 1139, PG. 527;  
D.B. 1139, PG. 525 AND D.B. 1141, PG. 53  
CONTAINING 12,029 SQUARE FEET  
AND TAX # 101-1809 BEING PROPERTY DESCRIBED IN  
D.B. 1449, PG. 1140  
CONTAINING 2,379 SQUARE FEET  
SITUATE ON CHURCH AVENUE, S.W. AND 1 st. STREET, S.W.  
CITY OF ROANOKE, VIRGINIA  
TAX # 101-1809 SCALE: 1" = 20'  
101-1817 DATE: AUGUST 13, 1998  
CALC: LRD N.B. JW-113  
DRAWN: LRD/197 W.O. 98-1165  
REVISED AUGUST 26, 1998 TO SHOW ADDITIONAL OWNERS.

**PEDESTRIAN BRIDGE:**  
137 SQ. FT. OVER ALLEY  
460 SQ. FT. OVER 1 st. ST., S.W.  
597 SQ. FT. TOTAL

**TAX # 101-1817**  
D.B. 1140, PG. 16, D.B. 1138, PG. 527, D.B. 1138  
PG. 525 AND D.B. 1141, PG. 53 CONVEYED TO  
SECURITY NATIONAL BANK OF ROANOKE.  
14 STORY BUILDING CONTAINS 168,600 SQUARE FEET ±  
GROSS FLOOR SPACE BASED ON OUTSIDE DIMENSIONS  
AND NUMBER OF FLOORS. HEIGHT OF BUILDING  
APPROXIMATELY 155 FEET.

**TAX # 101-1809**  
D.B. 1449, PG. 1140 CONVEYED TO UNITED VIRGINIA  
BANK/COMMONWEALTH, A VIRGINIA CORPORATION.

2 STORY BUILDING CONTAINS 34,000 SQUARE FEET ±  
GROSS FLOOR SPACE BASED ON OUTSIDE DIMENSIONS  
AND SECOND STORY BEING ONE HALF THE LENGTH OF  
THE BUILDING. HEIGHT OF BUILDING APPROXIMATELY  
20 FEET.



**TPP&S** T. P. PARKER & SON  
ENGINEERS 816 Boulevard  
SURVEYORS Post Office Box 39  
PLANNERS Salem, Virginia 24153

SHEET 2 OF 2  
M.B. 1, PG. 1858

