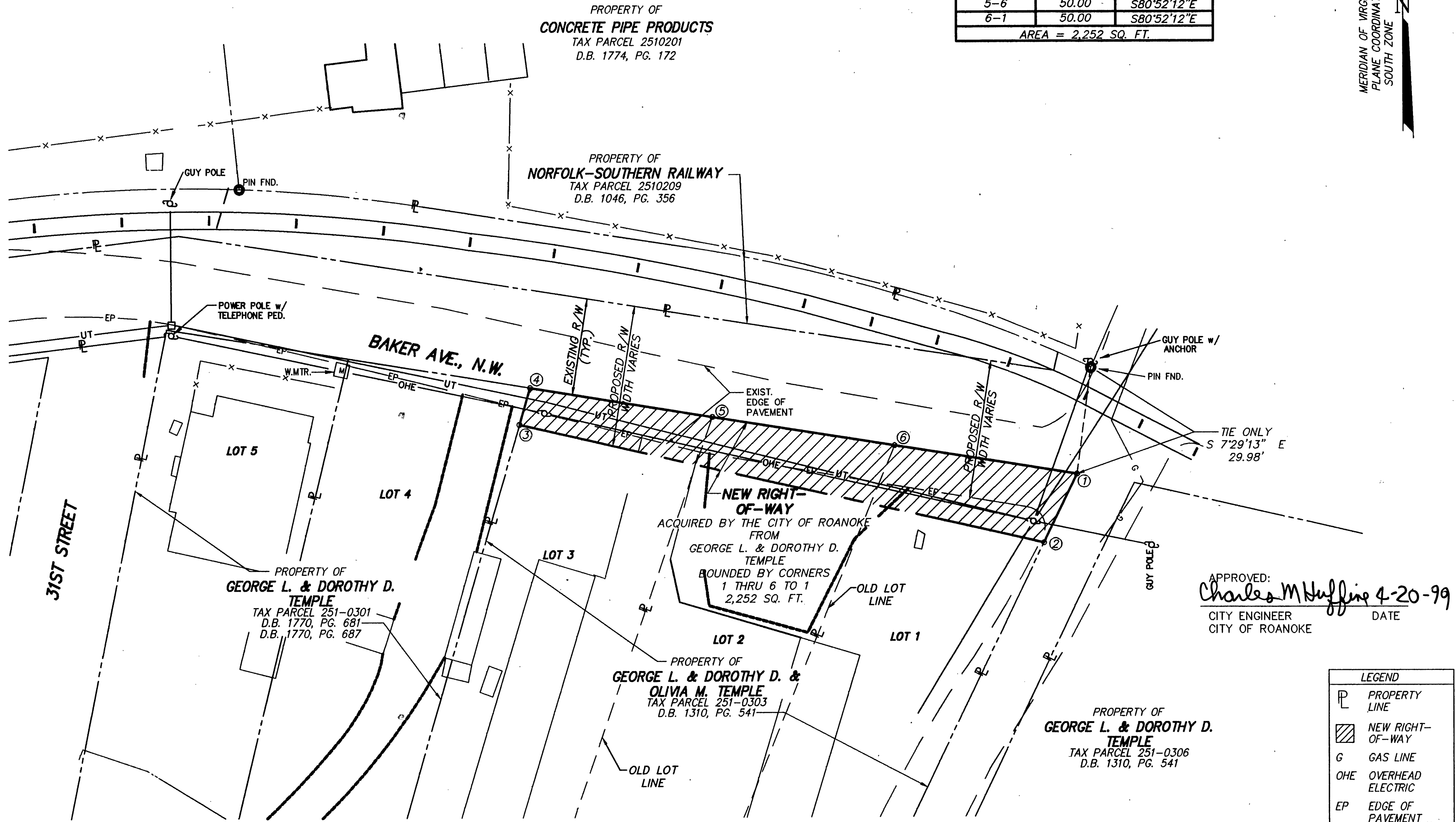


MERIDIAN OF VIRGINIA STATE
PLANE COORDINATE SYSTEM
SOUTH ZONE
NAD 83

NEW RIGHT-OF-WAY		
LINE	LENGTH	BEARING
1-2	20.86	S25°37'48"W
2-3	145.67	N77°02'13"W
3-4	10.34	N16°11'10"E
4-5	50.00	S80°52'12"E
5-6	50.00	S80°52'12"E
6-1	50.00	S80°52'12"E
AREA = 2,252 SQ. FT.		



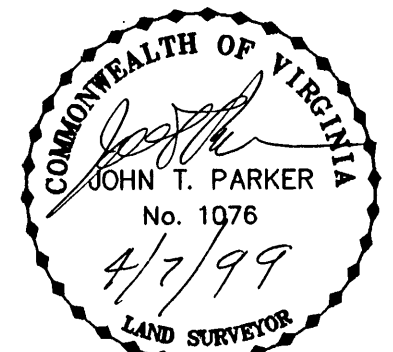
APPROVED:
Charles M. Huffine 4-20-99
CITY ENGINEER
CITY OF ROANOKE
DATE

LEGEND	
P	PROPERTY LINE
▨	NEW RIGHT-OF-WAY
G	GAS LINE
OHE	OVERHEAD ELECTRIC
EP	EDGE OF PAVEMENT
-x-	FENCE
⊗	UTILITY POLE
UT	UNDERGROUND TELEPHONE

RIGHT OF WAY PLAT
FOR
CITY OF ROANOKE
ENGINEERING

SHOWING ACQUISITION 2,252 SQ. FT. OF
RIGHT-OF-WAY ACROSS NORTH SIDE OF TAX
PARCEL 251-0303 BEING CONVEYED BY
GEORGE L. & DOROTHY D. &
OLIVIA M. TEMPLE
SITUATE BAKER AVENUE AND 31st STREET
CITY OF ROANOKE, VIRGINIA
PREPARED BY:

T.P. PARKER & SON
ENGINEERS-SURVEYORS-PLANNERS



DRAWN BY	JPR
CHECKED BY	DAP
TAX NO.	251-0303
CLOSED	JPR

- NOTES:
- THIS PLAT WAS PREPARED WITHOUT BENEFIT OF A TITLE REPORT AND IS SUBJECT THERETO. THEREFORE, THERE MAY EXIST ENCUMBRANCES WHICH AFFECT THE PROPERTY NOT SHOWN HEREON.
 - METES AND BOUNDS DESCRIPTIONS SHOWN HEREON REPRESENT A COMPOSITE OF DEEDS, PLATS, CALCULATED INFORMATION AND FIELD TIES TO PROPERTY BOUNDARIES TO LOCATE THE POSITION OF THE EASEMENT IN RELATION TO THE BOUNDARIES. THIS SURVEY DOES NOT REFLECT A COMPLETE AND ACCURATE BOUNDARY SURVEY OF THE SUBJECT PROPERTIES.

IN THE CLERK'S OFFICE OF THE CIRCUIT COURT OF THE CITY OF ROANOKE,
VIRGINIA THIS MAP WAS PRESENTED AND ADMITTED TO RECORD AT 10:41 O'CLOCK
A.M. ON THIS 20 DAY OF April, 1999.

TESTE: ARTHUR B. CRUSH, III
CLERK

BY: *Kathy S. Molladay*
DEPUTY CLERK

REVISED:	4/5/99
SCALE	1" = 20'
DATE	5/5/98
W.O.#	98-0582
D -	48060