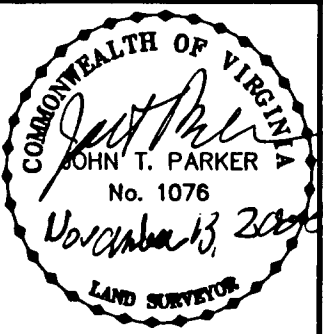


THIS IS AN ORIGINAL SIZE PLAT AND HAS NOT BEEN REDUCED.

LEGEND

- SS — SANITARY SEWER LINE
- OHW — OVERHEAD WIRES
- F.H. — FIRE HYDRANT
- SEWER MANHOLE
- UTILITY POLE & ANCHOR
- DITCH OR SWALE
- CENTERLINE
- BLDG — BUILDING
- W — WATER LINE
- X — FENCE
- G — GAS LINE
- R/W — RIGHT OF WAY WITH



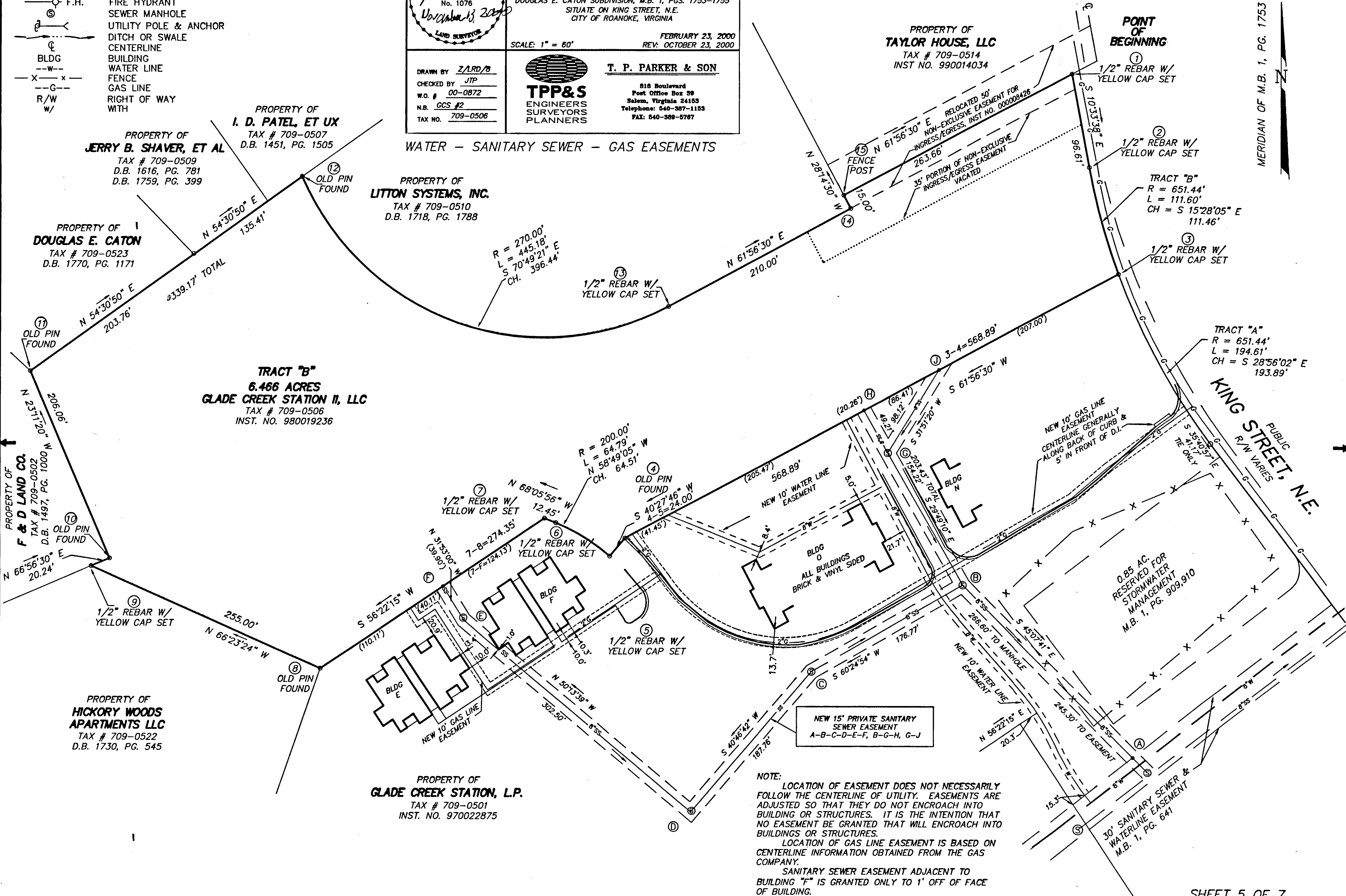
URBAN CLASS
ALTA/ACSM LAND TITLE SURVEY FOR
GLADE CREEK STATION II, LLC
OF TRACT "B" (6.466 ACRES)
DOUGLAS E. CATON SUBDIVISION, M.B. 1, PGS. 1753-1755
SITUATE ON KING STREET, N.E.
CITY OF ROANOKE, VIRGINIA

SCALE: 1" = 60' FEBRUARY 23, 2000
REV: OCTOBER 23, 2000

T. P. PARKER & SON
816 Boulevard
Post Office Box 39
Salem, Virginia 24153
Telephone: 540-387-1153
FAX: 540-389-5767

ENGINEERS
SURVEYORS
PLANNERS

DRAWN BY: ZLRD/B
CHECKED BY: JTP
W.O. #: 00-0872
N.B. GCS #2
TAX NO. 709-0506



NOTE:
LOCATION OF EASEMENT DOES NOT NECESSARILY FOLLOW THE CENTERLINE OF UTILITY. EASEMENTS ARE ADJUSTED SO THAT THEY DO NOT ENCRoACH INTO BUILDING OR STRUCTURES. IT IS THE INTENTION THAT NO EASEMENT BE GRANTED THAT WILL ENCRoACH INTO BUILDINGS OR STRUCTURES.
LOCATION OF GAS LINE EASEMENT IS BASED ON CENTERLINE INFORMATION OBTAINED FROM THE GAS COMPANY.
SANITARY SEWER EASEMENT ADJACENT TO BUILDING "F" IS GRANTED ONLY TO 1' OFF OF FACE OF BUILDING.
THE LOCATION OF UNDERGROUND UTILITIES IS BASED ON FIELD SURVEYS AND AS LOCATED BY THE UNDERGROUND LOCATOR SERVICE AND SHOULD BE CONSIDERED APPROXIMATE.

