

## NOTES:

- 1) THIS PLAT IS BASED ON A CURRENT FIELD SURVEY.
- 2) THIS PLAT WAS PREPARED WITHOUT THE BENEFIT OF A CURRENT TITLE REPORT AND THERE MAY EXIST ENCUMBRANCES WHICH AFFECT THE SUBJECT PROPERTY NOT SHOWN HEREON.
- 3) THIS PLAT DOES NOT GUARANTEE THE EXISTENCE OR LOCATION OF ANY UNDERGROUND UTILITIES. STORM DRAIN STRUCTURES, SANITARY SEWER MANHOLES, AND ALL OTHER SURFACE UTILITIES WERE FIELD LOCATED. ALL UNDERGROUND UTILITIES SHOWN WERE ESTABLISHED USING ABOVE GROUND STRUCTURES AND AVAILABLE UTILITY MAPS. ALL UNDERGROUND UTILITY LINES ARE APPROXIMATE AND SHOULD BE FIELD VERIFIED PRIOR TO THE START OF ANY CONSTRUCTION.
- 4) THE PROPERTY SHOWN HEREON (19.312 AC.) IS COMPRISED OF TAX MAP #1410102 PROPERTY OF NORFOLK AND WESTERN RAILWAY COMPANY, D.B. 661, PG. 491 AND A PORTION OF TAX MAP #1410103 PROPERTY OF NORFOLK AND WESTERN RAILWAY COMPANY, D.B. 891, PG. 440.
- 5) BOUNDARY LINES SHOWN HEREON WERE TAKEN FROM PLAT ENTITLED "TOPOGRAPHICAL SURVEY AND PARTIAL BOUNDARY SURVEY PREPARED FOR NORFOLK SOUTHERN CORPORATION, SITUATED ALONG THE NORTH SIDE OF PATTERSON AVE., ROANOKE, VIRGINIA" PREPARED BY LUMSDEN ASSOCIATES, P.C. AND DATED AUGUST 4, 1993. THIS PLAT CONSTITUTES A PARTIAL BOUNDARY SURVEY.
- 6) BOUNDARY LINES BETWEEN CORNERS 4 THROUGH 12, INCLUSIVE, RUN ALONG THE CENTERLINE OF THE EASTBOUND MAINLINE TRACK OF THE NORFOLK & WESTERN RAILWAY AND ARE BASED ON NORFOLK & WESTERN RY. PLANS, RADFORD DISTRICT, FROM STATION (13461+42 VAL CENTERLINE) TO (13514+22 VAL CENTERLINE).
- 7) THE AREA AS SHOWN HEREON (19.312 ACRES) WAS COMPUTED USING CHORDS ALONG THE SPIRAL CURVES AND THEN THE AREAS BETWEEN THE CHORDS AND ARCS WERE ADDED AS FOLLOWS:

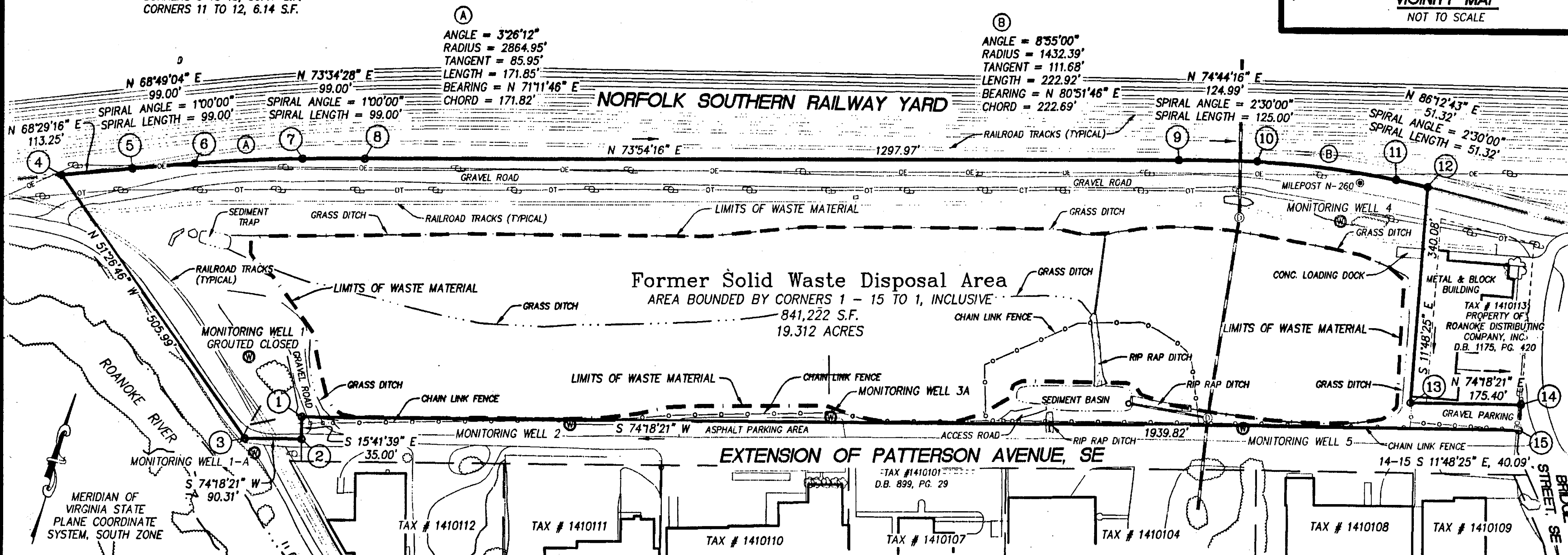
ORIGINAL AREA USING CHORDS = 841,131.32 S.F.

CORNERS 5 TO 6, 13.97 S.F.

CORNERS 7 TO 8, 13.97 S.F.

CORNERS 9 TO 10, 56.47 S.F.

CORNERS 11 TO 12, 6.14 S.F.



PHONE: (540) 774-4411  
FAX: (540) 772-9445  
E-MAIL: MAIL@LUMSDENPC.COM

4664 BRAMBLETON AVENUE, SW  
P.O. BOX 20669  
ROANOKE, VIRGINIA 24018

**LA LUMSDEN ASSOCIATES, P.C.**  
ENGINEERS-SURVEYORS-PLANNERS  
ROANOKE, VIRGINIA



**DATE: NOVEMBER 15, 2000**  
**SCALE: 1" = 120'**  
**COMM. NO.: 2000-351**  
**CADD FILE: F:\001\00351\351RPP01.DWG**  
**SHEET 1 OF 1**