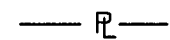


LEGEND:



EASEMENT AREA



PROPERTY LINE

S.S.E.

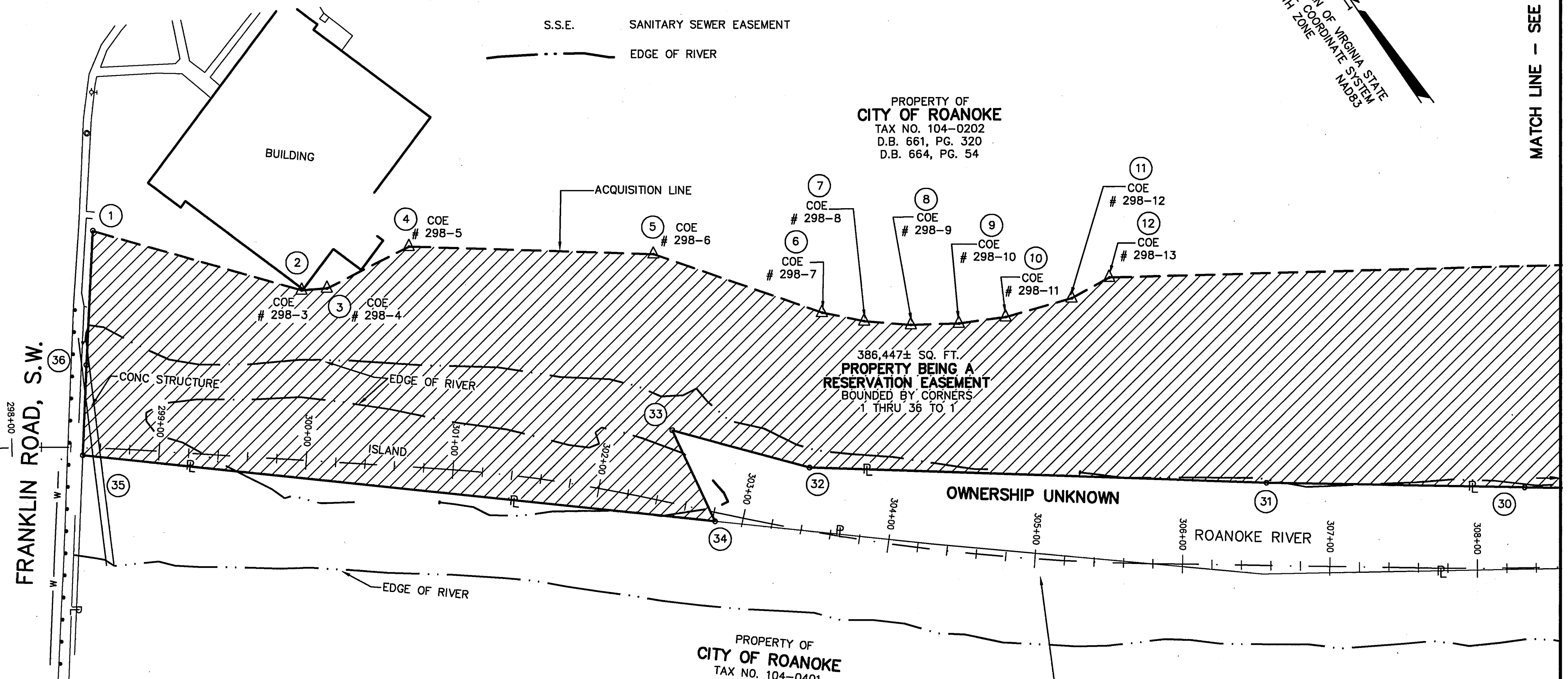
SANITARY SEWER EASEMENT



EDGE OF RIVER

MERIDIAN OF VIRGINIA STATE
PLANE COORDINATE SYSTEM
SOUTH ZONE
NAD83

PROPERTY OF
CITY OF ROANOKE
TAX NO. 104-0202
D.B. 661, PG. 320
D.B. 664, PG. 54



COORDINATES

BY COE FLOOD REDUCTION PROJECT

| PI NUMBER | NORTHING | EASTING |
|-----------|------------|-------------|
| 298-3 | 3619755.57 | 11061248.56 |
| 298-4 | 3619746.93 | 11061263.54 |
| 298-5 | 3619738.83 | 11061325.51 |
| 298-6 | 3619640.50 | 11061459.65 |
| 298-7 | 3619543.14 | 11061531.59 |
| 298-8 | 3619522.12 | 11061551.92 |
| 298-9 | 3619502.18 | 11061576.55 |
| 298-10 | 3619484.56 | 11061603.90 |
| 298-11 | 3619470.23 | 11061632.53 |
| 298-12 | 3619455.41 | 11061676.63 |
| 298-13 | 3619452.55 | 11061705.49 |
| 298-14 | 3619229.70 | 11062051.16 |
| 298-15 | 3619156.79 | 11062209.81 |
| 298-16 | 3619280.33 | 11062294.05 |
| 298-17 | 3619273.18 | 11062337.95 |
| 298-18 | 3619110.11 | 11062311.39 |
| 298-19 | 3619070.89 | 11062405.70 |
| 298-20 | 3618981.95 | 11062643.43 |

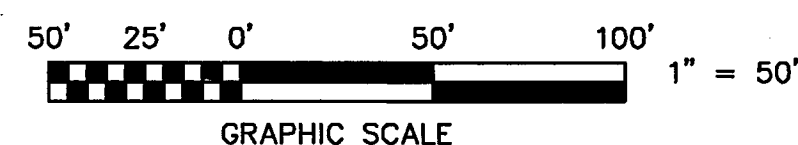
NOTES:

1. THIS PLAT IS BASED ON TITLE COMMITMENT NUMBER RE00-101309 DATED 11/01/2000.
2. THIS PLAT REPRESENTS A COMPOSITE OF DEEDS, PLATS, CALCULATED INFORMATION AND FIELD TIES TO PROPERTY BOUNDARIES TO LOCATE THE POSITION OF THE PROPERTY IN RELATION TO THE BOUNDARIES. THIS SURVEY DOES NOT REFLECT A COMPLETE AND ACCURATE BOUNDARY SURVEY OF THE SUBJECT PROPERTIES.

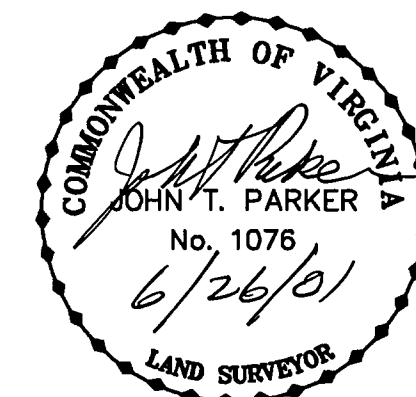
IN THE CLERK'S OFFICE OF THE CIRCUIT COURT OF THE CITY OF ROANOKE, VIRGINIA
THIS MAP WAS PRESENTED WITH THE CERTIFICATE OF ACKNOWLEDGMENT THEREOF ATTACHED
ADMITTED TO RECORD AT 10:00 O'CLOCK A.M. ON THIS 10 DAY OF July, 2001.

TESTE: ARTHUR B. CRUSH, III
CLERK

BY: Tatya Taylor
DEPUTY CLERK



PROJECT CENTERLINE



REVISED: 02/01/01

TPP&S T. P. PARKER & SON
ENGINEERS 816 Boulevard
SURVEYORS Post Office Box 39
PLANNERS Salem, Virginia 24153

W.O.: 98-1195

TAX # 104-0202

N.B. N/A DRAWN JTP, JR.

CALC. CHK'D JTP

CLOSED: JTP, JR.

| OFFICE OF CITY ENGINEER ROANOKE VIRGINIA | |
|---|---|
| ROANOKE RIVER FLOOD REDUCTION PROJECT SHOWING A RESERVATION EASEMENT BY THE CITY OF ROANOKE FROM THE CITY OF ROANOKE THE CITY OF ROANOKE, VIRGINIA | |
| SCALE: 1" = 50' | APPROVED: <u>Sheep C. Salmeron</u> 6/27/01 CITY ENGINEER |
| DATE: 24 AUGUST 2000 | |
| PLAN NO. 6444-104 | |

SHEET 1 OF 2
M.B. 1 PG. 2276