


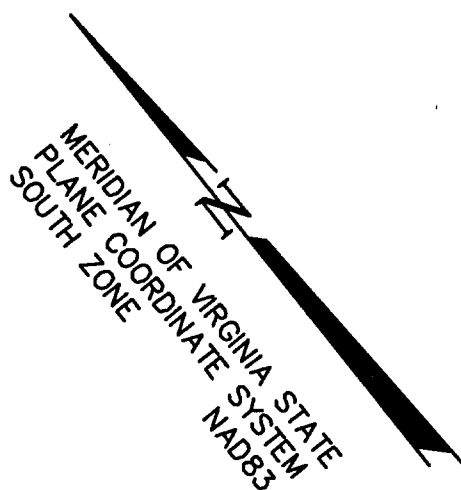


LEGEND:

-  EASEMENT AREA  
 PROPERTY LINE  
S.S.E. SANITARY SEWER EASEMENT  
 EDGE OF RIVER

NOTES:

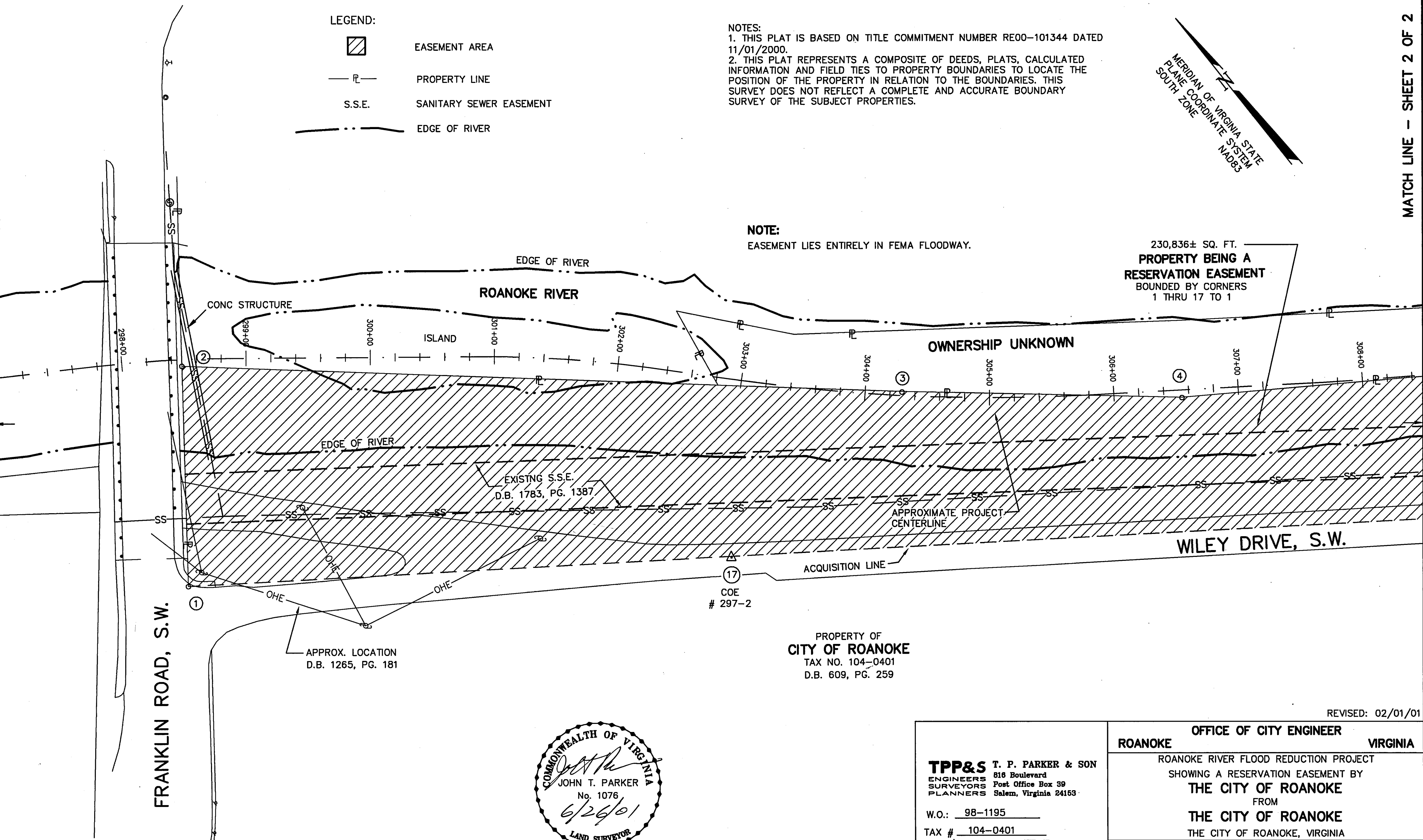
1. THIS PLAT IS BASED ON TITLE COMMITMENT NUMBER RE00-101344 DATED 11/01/2000.
2. THIS PLAT REPRESENTS A COMPOSITE OF DEEDS, PLATS, CALCULATED INFORMATION AND FIELD TIES TO PROPERTY BOUNDARIES TO LOCATE THE POSITION OF THE PROPERTY IN RELATION TO THE BOUNDARIES. THIS SURVEY DOES NOT REFLECT A COMPLETE AND ACCURATE BOUNDARY SURVEY OF THE SUBJECT PROPERTIES.



NOTE:

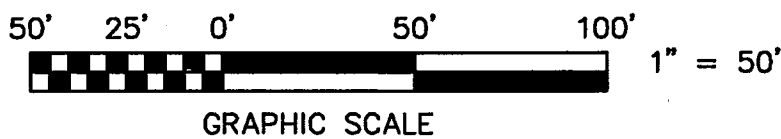
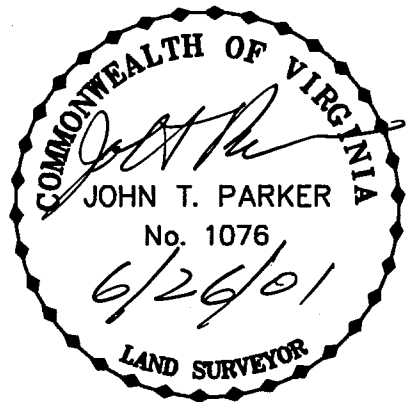
EASEMENT LIES ENTIRELY IN FEMA FLOODWAY.

230,836± SQ. FT.  
PROPERTY BEING A  
RESERVATION EASEMENT  
BOUNDED BY CORNERS  
1 THRU 17 TO 1



IN THE CLERK'S OFFICE OF THE CIRCUIT COURT OF THE CITY OF ROANOKE, VIRGINIA  
THIS MAP WAS PRESENTED WITH THE CERTIFICATE OF ACKNOWLEDGMENT THERETO ATTACHED  
ADMITTED TO RECORD AT 10:41 O'CLOCK A.M. ON THIS 10 DAY OF July, 2001.

TESTE: ARTHUR B. CRUSH, III  
CLERK  
BY: *Ruby Taylor*  
DEPUTY CLERK



<b>TPP&amp;S</b> T. P. PARKER & SON ENGINEERS 816 Boulevard SURVEYORS Post Office Box 39 PLANNERS Salem, Virginia 24153  W.O.: 98-1195 TAX # 104-0401 N.B. N/A DRAWN JTP, JR. CALC. CHK'D JTP CLOSED: JTP, JR.	<b>OFFICE OF CITY ENGINEER</b> <b>ROANOKE VIRGINIA</b>	
	ROANOKE RIVER FLOOD REDUCTION PROJECT SHOWING A RESERVATION EASEMENT BY <b>THE CITY OF ROANOKE</b> FROM <b>THE CITY OF ROANOKE</b> THE CITY OF ROANOKE, VIRGINIA	
	SCALE: 1" = 50' DATE: 24 AUGUST 2000 PLAN NO. 6444-105	APPROVED: <i>Therap C. Schirmer</i> 6/27/01 CITY ENGINEER

0661