

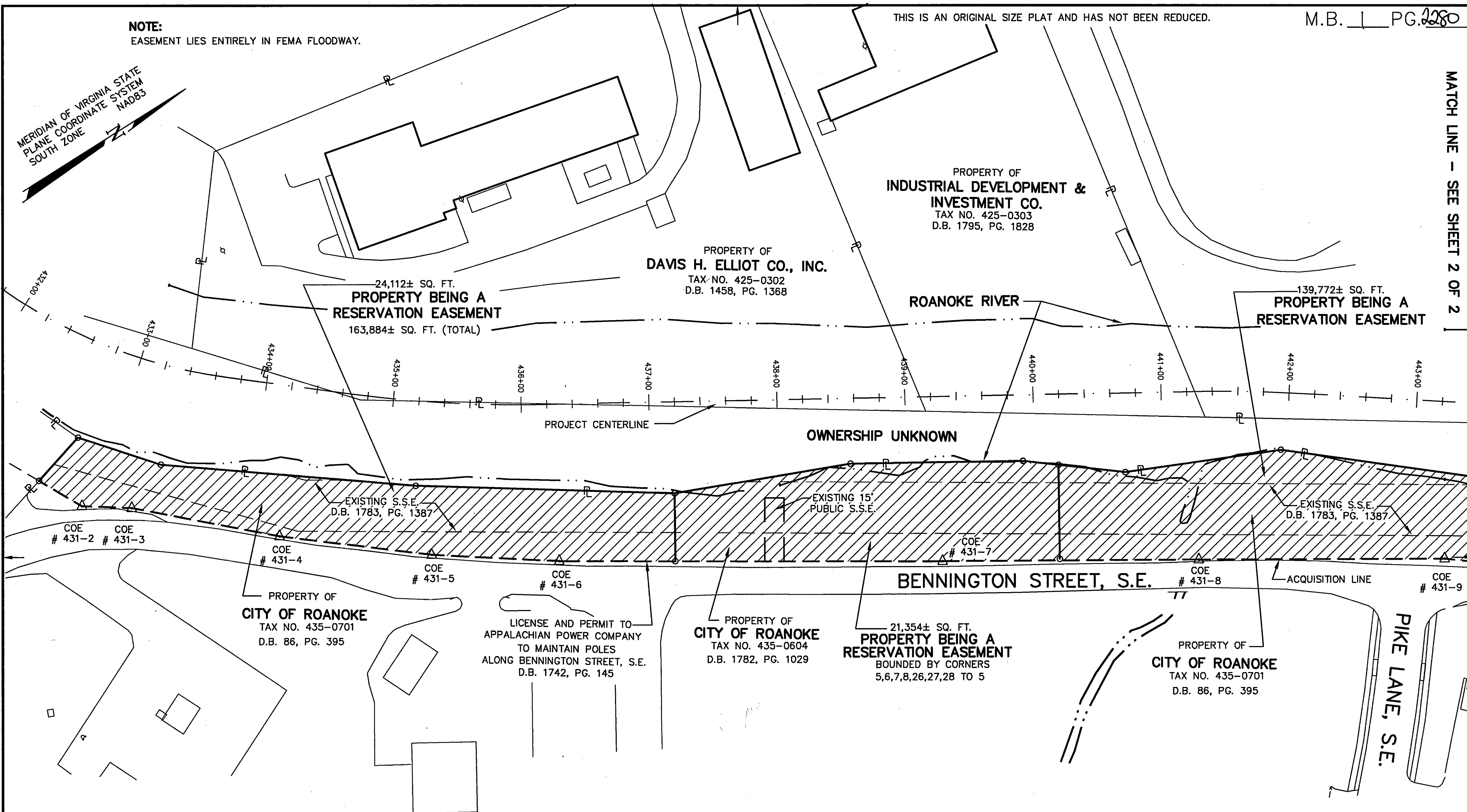
NOTE:
EASEMENT LIES ENTIRELY IN FEMA FLOODWAY.

THIS IS AN ORIGINAL SIZE PLAT AND HAS NOT BEEN REDUCED.

M.B. 1 PG. 2280

MATCH LINE - SEE SHEET 2 OF 2

MERIDIAN OF VIRGINIA STATE
PLANE COORDINATE SYSTEM
NAD83



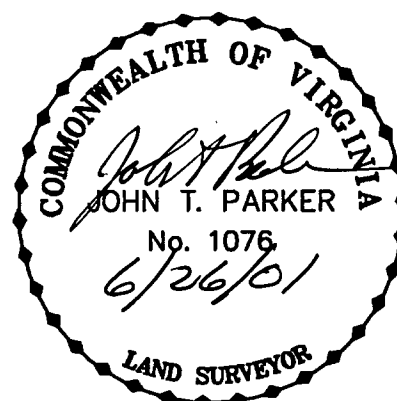
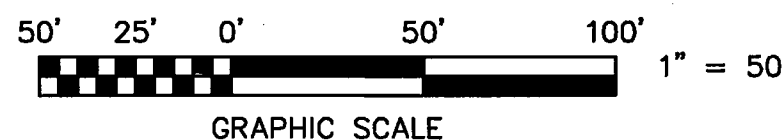
LEGEND:

- EASEMENT AREA
- PROPERTY LINE
- SANITARY SEWER EASEMENT
- EDGE OF RIVER

NOTES:
1. THIS PLAT IS BASED ON TITLE COMMITMENT NUMBER RE00-070932 DATED 08/30/2000 AND RE00-081014 DATED 8/30/2000.
2. THIS PLAT REPRESENTS A COMPOSITE OF DEEDS, PLATS, CALCULATED INFORMATION AND FIELD TIES TO PROPERTY BOUNDARIES TO LOCATE THE POSITION OF THE PROPERTY IN RELATION TO THE BOUNDARIES. THIS SURVEY DOES NOT REFLECT A COMPLETE AND ACCURATE BOUNDARY SURVEY OF THE SUBJECT PROPERTIES.

IN THE CLERK'S OFFICE OF THE CIRCUIT COURT OF THE CITY OF ROANOKE, VIRGINIA THIS MAP WAS PRESENTED WITH THE CERTIFICATE OF ACKNOWLEDGMENT THERETO ATTACHED ADMITTED TO RECORD AT 10:03 O'CLOCK A.M. ON THIS 10 DAY OF July, 2001.

TESTE: ARTHUR B. CRUSH, III
CLERK
BY: *Patty Taylor*
DEPUTY CLERK



TPP&S T. P. PARKER & SON
ENGINEERS 818 Boulevard
SURVEYORS Post Office Box 39
PLANNERS Salem, Virginia 24153
W.O.: 98-1195
TAX # 435-0701, 435-0604
N.B. N/A DRAWN JTP, JR.
CALC. CHK'D JTP
CLOSED: JTP, JR.

REVISED: 01/25/01

OFFICE OF CITY ENGINEER ROANOKE VIRGINIA	
ROANOKE RIVER FLOOD REDUCTION PROJECT SHOWING A RESERVATION EASEMENT BY THE CITY OF ROANOKE FROM THE CITY OF ROANOKE THE CITY OF ROANOKE, VIRGINIA	
SCALE: 1" = 50'	APPROVED: <i>Philip C. Scrimm</i> 6/27/01 CITY ENGINEER
DATE: 24 AUGUST 2000	
PLAN NO. 6444-005	

SHEET 1 OF 2
M.B. 1 PG. 2280