

NOTES:  
 1. THIS PLAT IS BASED ON TITLE COMMITMENT NUMBER RE00-121517 DATED 12/15/2000.  
 2. THIS PLAT REPRESENTS A COMPOSITE OF DEEDS, PLATS, CALCULATED INFORMATION AND FIELD TIES TO PROPERTY BOUNDARIES TO LOCATE THE POSITION OF THE PROPERTY IN RELATION TO THE BOUNDARIES. THIS SURVEY DOES NOT REFLECT A COMPLETE AND ACCURATE BOUNDARY SURVEY OF THE SUBJECT PROPERTIES.

THIS IS AN ORIGINAL SIZE PLAT AND HAS NOT BEEN REDUCED.

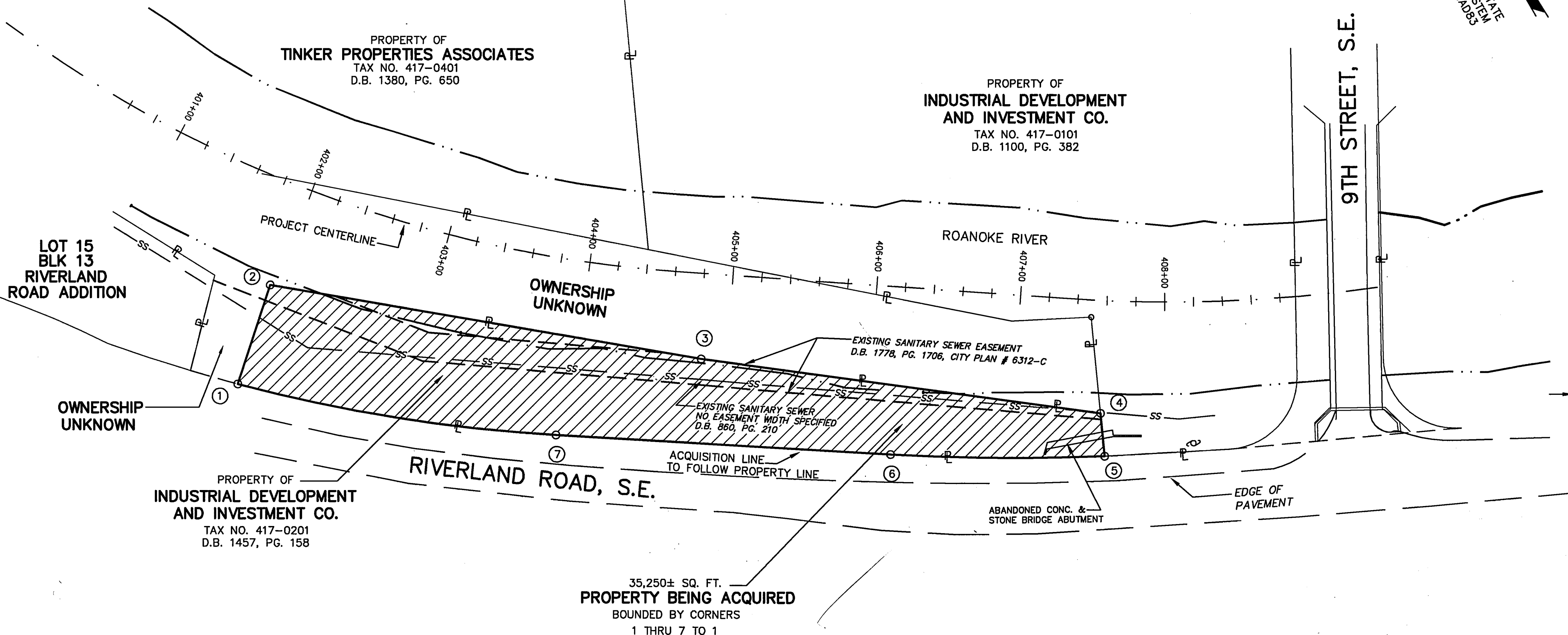
M.B. 1 PG. 2290

# COORDINATES

PI NUMBER	NORTHING	EASTING
5	3618725.66	11067824.29
6	3618799.32	11067695.34
7	3618924.91	11067499.32
1	3619064.17	11067323.69

NOTE:  
 PROPERTY BEING ACQUIRED LIES ENTIRELY IN FEMA FLOODWAY.

MERIDIAN OF VIRGINIA STATE  
 PLANE COORDINATE SYSTEM  
 SOUTH ZONE  
 NAD83



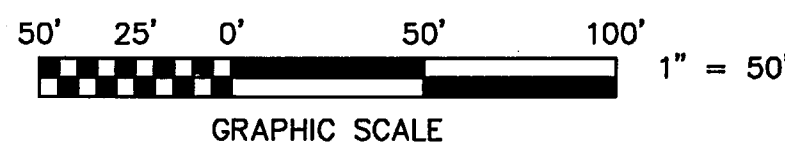
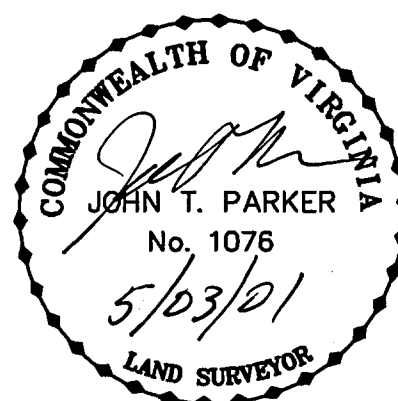
## LEGEND:

- PROPERTY BEING ACQUIRED
- PROPERTY LINE
- S.S.E. SANITARY SEWER EASEMENT
- EDGE OF RIVER

IN THE CLERK'S OFFICE OF THE CIRCUIT COURT OF THE CITY OF ROANOKE, VIRGINIA  
 THIS MAP WAS PRESENTED WITH THE CERTIFICATE OF ACKNOWLEDGMENT THERETO ATTACHED  
 ADMITTED TO RECORD AT 2:21 O'CLOCK P.M. ON THIS 19 DAY OF July, 2001.

TESTE: ARTHUR B. CRUSH, III  
 CLERK

BY:   
 DEPUTY CLERK



<b>TPP&amp;S</b> T. P. PARKER & SON ENGINEERS 816 Boulevard SURVEYORS Post Office Box 39 PLANNERS Salem, Virginia 24153  W.O.: 98-1195 TAX # 417-0201 N.B. N/A DRAWN JTP, JR. CALC. CHK'D JTP CLOSED: JTP, JR.	<b>OFFICE OF CITY ENGINEER VIRGINIA</b> ROANOKE ROANOKE RIVER FLOOD REDUCTION PROJECT SHOWING PROPERTY BEING ACQUIRED IN FEE SIMPLE BY <b>THE CITY OF ROANOKE</b> FROM <b>INDUSTRIAL DEVELOPMENT AND INVESTMENT CO.</b> THE CITY OF ROANOKE, VIRGINIA	
	SCALE: 1" = 50' DATE: 2 FEBRUARY 2001 PLAN NO. 6444-015	APPROVED:  CITY ENGINEER
	M.B. 1 PG. 2290	
	M.B. 1 PG. 2290	